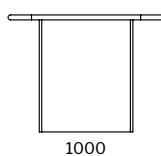
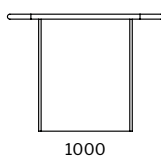
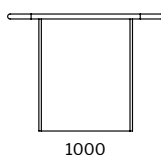
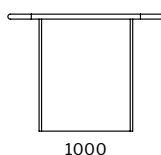
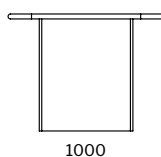
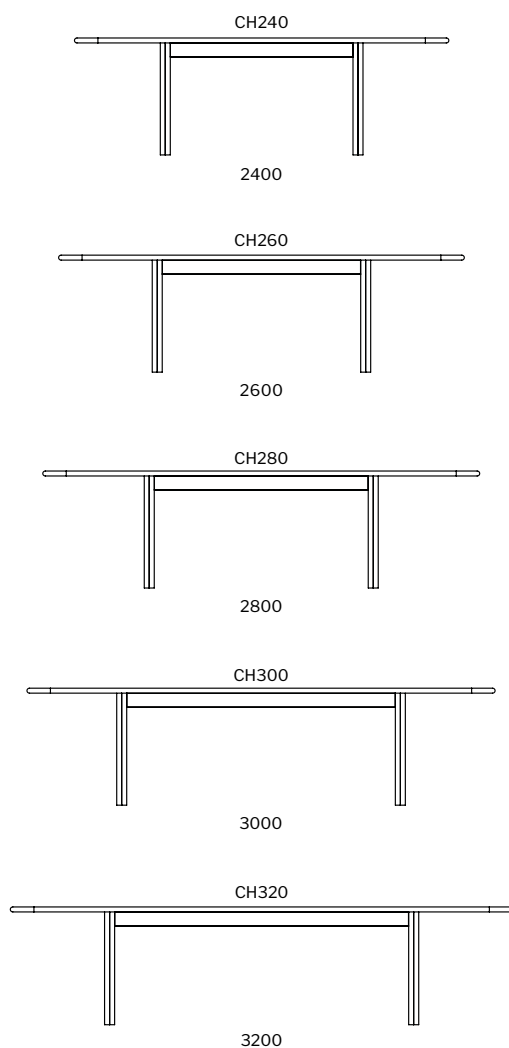


# chester.



## Dimensions

table  
750H



... SPECIFICATION  
... Structure// Solid American  
... Oak, Tasmanian Oak or Walnut  
... w/ clear 2pk Polyurethane  
... coating.

... STAIN/UPHOLSTERY/FINISH  
... Selection of timber stains.

Click to view [Design Options!](#)

Australian Designed & Made

\*Please note that dimensions are approximate and can differ based on the natural expansion/contraction of timber. Dimensions exclude glides.

Studio Pip

# timber.

---

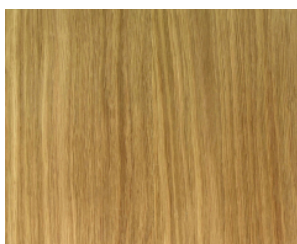
## stain guide

### AMERICAN OAK

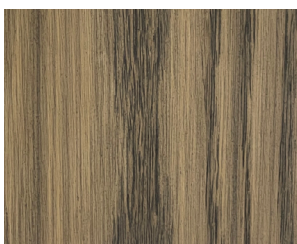
Also known as White Oak.

Appearance// Has a tight grain pattern that tends to run in a V shape. Colour is yellowish which becomes more prominent with age and light exposure. Beautiful knots & grains. Ghost Marks common. Not to be confused with European Oak.

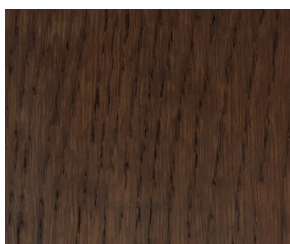
**Sustainably farmed & sourced in America.**



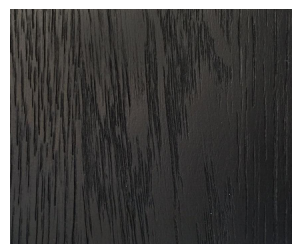
// natural



// whiskey (stain)



// walnut (stain)



// true black (stain)

---

//KEEP IT AUSTRALIAN

### TASMANIAN OAK

Also known as Victorian/Mountain Ash or Stringy Bark

Appearance// Ranges from very light to medium browns often with a pink hue. The grain tends to run straight and close through the timber.

All standard Studio Pip stains can be used on Tasmanian Oak

**Naturally grown & sourced in Australia**

---

//PREMIUM TIMBER

### AMERICAN WALNUT

Also known as Black Walnut

Appearance// Ranges from golden to a rich chocolate brown with occasional streaks of a darker purplish brown colour. Generally straight grain with curly or wavy grain pattern.

**Sustainably farmed & sourced in America.**