

THERMAL PERMANENT BRIDGE PLUG

Suspend/abandon well bore



Rated up to 3,000 psi
[21 MPa]



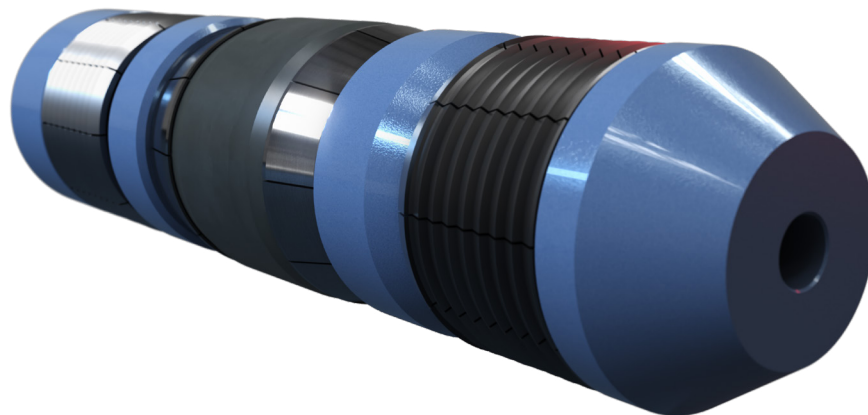
Rated up to 662 degF
[350 degC]

APPLICATIONS

- Thermal applications requiring a permanent bridge plug
- Abandonment's requiring a thermal bridge plug

FEATURES & BENEFITS

- Field proven
- Simple design
- Compact design allows greater casing access
- No elastomers eliminate leak paths
- Full circle, one piece slips
- Hydraulic set with retrievable setting tool
- Compact
- Tapered nose
- Thermal element rated to 350° C
- No elastomers



Description

The Thermal Permanent Bridge Plug (TPBP) is the thermal version of the reliable HM-1B and DB bridge plug. The thermal permanent bridge plugs are an economical way to suspend or abandon a well bore while maintaining the ability to drill out the bridge plug and re-enter the hole.

Operation

The TPBP is run and set utilizing the compact hydraulic setting tool. The TPBP is run to depth on the hydraulic setting tool and work string. The work string is filled and pressured up to initiate a set. It is a best practice to hold hydraulic pressure and pull tension into the bridge plug, and repeat. Once the element is packed off, right hand rotation will release the setting tool from the bridge plug.

THERMAL PERMANENT BRIDGE PLUG SPECIFICATIONS

Casing Size in (mm)	Casing Weight Range lb/ft (kg/m)	Plug O.D. in (mm)
4.500 (114.3)	9.5 - 15.1 (14.1 - 22.5)	3.562 (90.5)
5.000 (127.0)	11.5 - 20.8 (17.1 - 31.0)	3.937 (100.0)
5.500 (139.7)	13.0 - 23.0 (19.4 - 34.3)	4.235 (107.6)
6.625 (168.3)	17.0 - 32.0 (25.3 - 47.6)	5.375 (136.5)
7.000 (177.8)	17.0 - 35.0 (25.3 - 52.1)	5.604 (142.3)
7.625 (193.7)	20.0 - 39.0 (29.8 - 58.0)	6.312 (160.3)
8.625 (219.1)	24.0 - 49.0 (35.7 - 72.9)	7.125 (181.0)
9.625 (244.5)	29.3 - 58.4 (43.6 - 86.9)	8.125 (206.4)

