

KICKSTART

Toe Initiation Port



Rated up to 18,000 psi
[124 MPa]



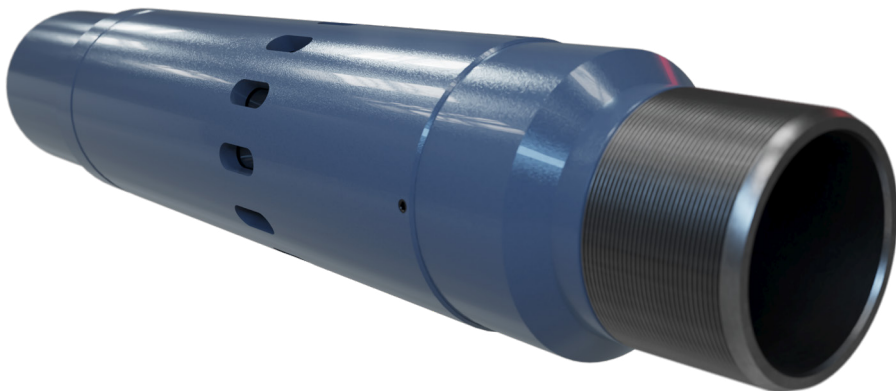
Rated up to 285 degF
[141 degC]

APPLICATIONS

- Horizontal, deviated and vertical wells
- Cemented wellbores

FEATURES

- Cost effective reservoir access
- Eliminates initial coil tubing trip
- Use with standard cementing procedures
- Large flow ports allow for high stimulation rate
- Sleeve shifts up to open and locks in position, eliminating risk of premature opening
- Rated to 18,000 psi
- Rated to 285 °F



Steelhaus' KickStart Toe Initiation Port is designed to provide an economic means to initiate communication with the reservoir.

Usually placed at the toe of the well, the KickStart is activated when hydraulic pressure is applied to the casing string. Once opened, a flow path is initiated to the reservoir facilitating pump down operations or even the placement of an initial stimulation treatment.



KICKSTART SPECIFICATIONS

Nominal Size, in [mm]	Weight lb/ft	OD in [mm]	ID in [mm]	Length, in [mm]	Burst Psi (MPa)	Collapse Psi (MPa)	Temperature F (C)	Connections	Tensile LBS
4.5 [114.3]	11.6 - 15.1	5.75 [146]	3.75 [95.25]	30 [762]	18,000 [124.1]	15,000 [103.4]	285 [141]	As Requested	350,000
5.5 [139.7]	17.0 - 23.0	7.0 [177.8]	4.25 [107.9]	35 [889]	17,500 [120.6]	14,000 [96.5]	285 [141]	As Requested	400,000

