

Construction Range

# Roofings Ply



Protects from above.

# IPL NZ Roofing Ply

IPL NZ Roofing Ply can be found all over New Zealand on commercial, residential and agricultural buildings. Plywood offers additional bracing values and keeps heat in and noise out. It also provides excellent cover from the weather so construction work can continue beneath the roof substrate while the roofing system is being installed.

## At a glance

- Manufactured to AS/NZ 2269 Construction Plywood.
- High strength-to-weight ratio makes it ideal in a range of applications where strength and stiffness are required.
- Available treated to H3.2 (CCA treated) and, on request, clear treated LOSP to H3.1 standard.
- Also available untreated to be used in areas where contact with moisture is not a consideration.
- Comes with plastic tongue & groove for easy interlocking.
- Available in 15 and 17mm thicknesses.
- IPL NZ Roofing Ply comes in a D face.
- **For all membrane roofing applications use TuffPly™ Membrane Roofing Ply**

## Installation

- Lay roofing sheets in a staggered pattern.
- Sheets must be continuous over at least two spans.
- Allow 1-2mm expansion joint on sheet ends at the rafter / truss.
- Allow ridge and apron clearance for ventilation as required.
- Standard nailing pattern is 75mm spacing on all gable, gutter, hip and ridge and eave lines, and 160 centres on through supports. Sheet thickness, wind load and roofing system will determine exact fixing requirements as per architect / engineer specifications.

## Compliance with Standards

IPL NZ Roofing Ply is manufactured in accordance with AS/NZ 2269 Construction Plywood. The panels are to be installed in accordance with the building design code.

The Engineered Wood Products Association of Australasia (EWPAA or PAA) audits the production processes and internal quality control procedures to ensure we meet the requirements of the product Standard. This third party audited, process based, quality assurance scheme meets the requirements of an ISO Type 5 system and ensures constant monitoring of maintaining production of quality.

## Environmentally Sustainable

All veneer used in IPL manufactured products are from New Zealand plantation grown Pinus Radiata.

## Branding

### Back of all sheets marked:

**DD** The back of all sheets marked with sheet face and grade

**IPL** Name of Manufacturer

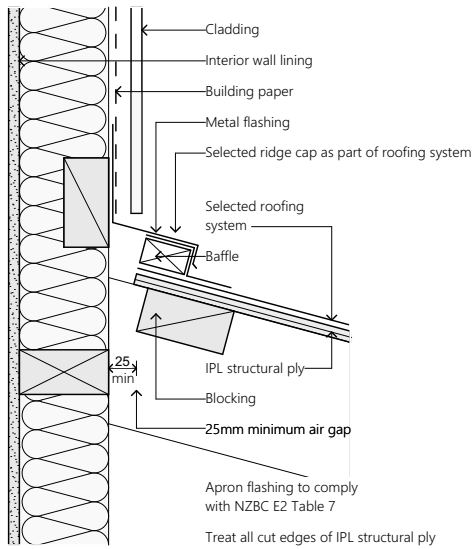
**A bond** Bond type

**F8** Stress grade

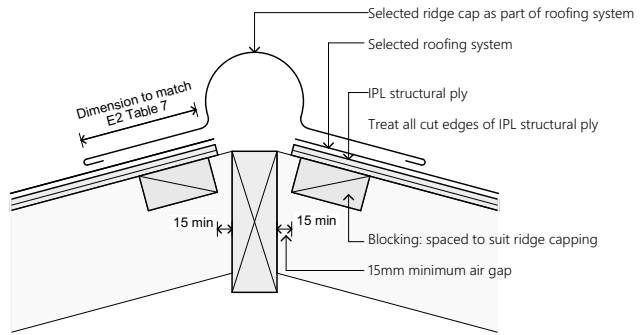
**AS/NZ 2269** Structural Plywood Standard

**914** Engineered Wood Products Association mill number

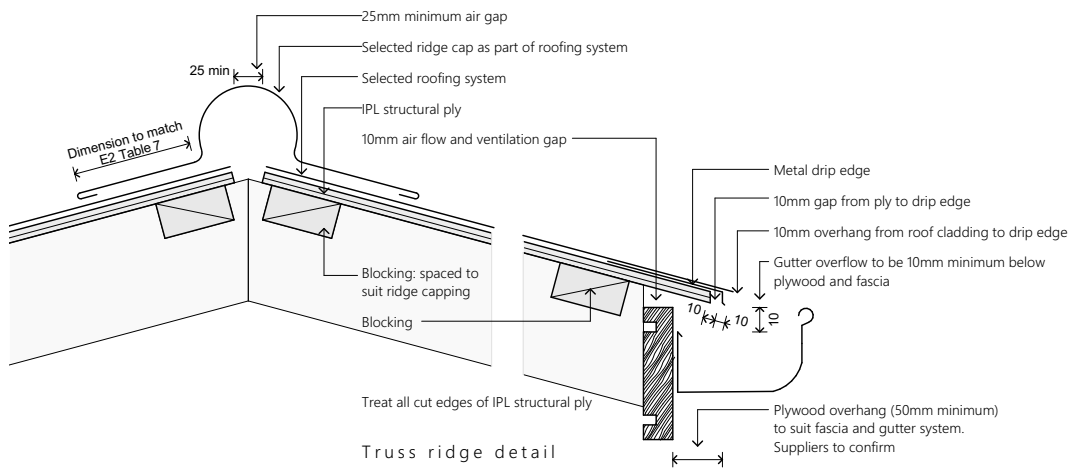
**Construction code** eg. 15mm 15-30-5



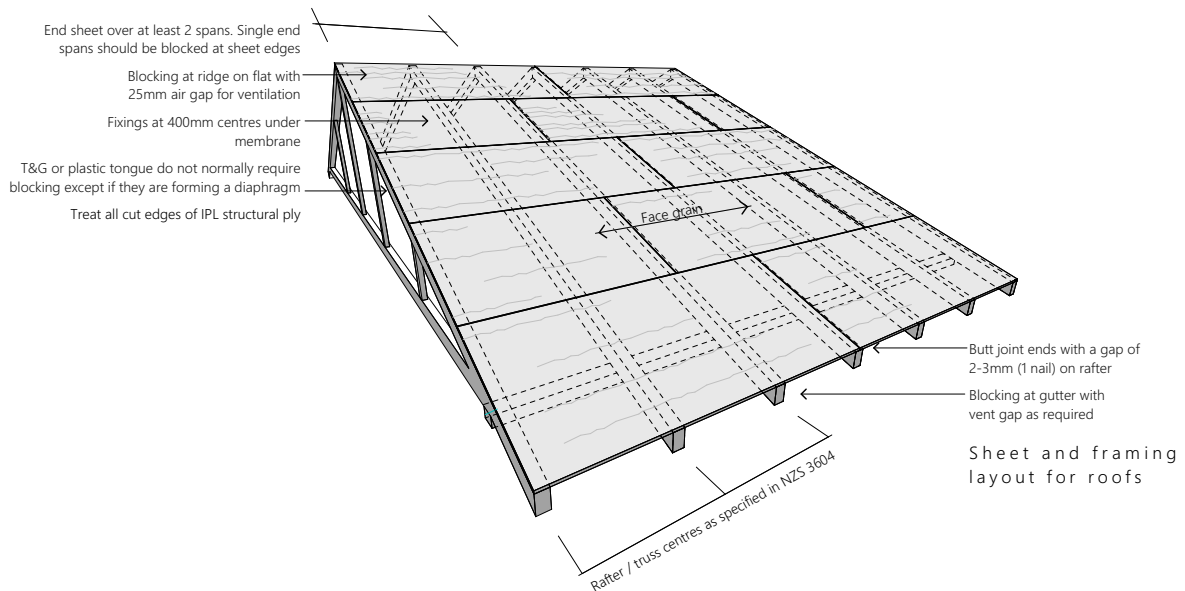
Wall to Roof vent junction



Ridge detail with ridgeboard  
Use also with hip rafter if extra ventilation is required



Truss ridge detail



Sheet and framing layout for roofs

International Panel & Lumber (West Coast) LTD  
3 Trickies Road, Greymouth, New Zealand, PO Box 179  
www.ipply.nz



Crafted on the Coast  
Made for New Zealand

