

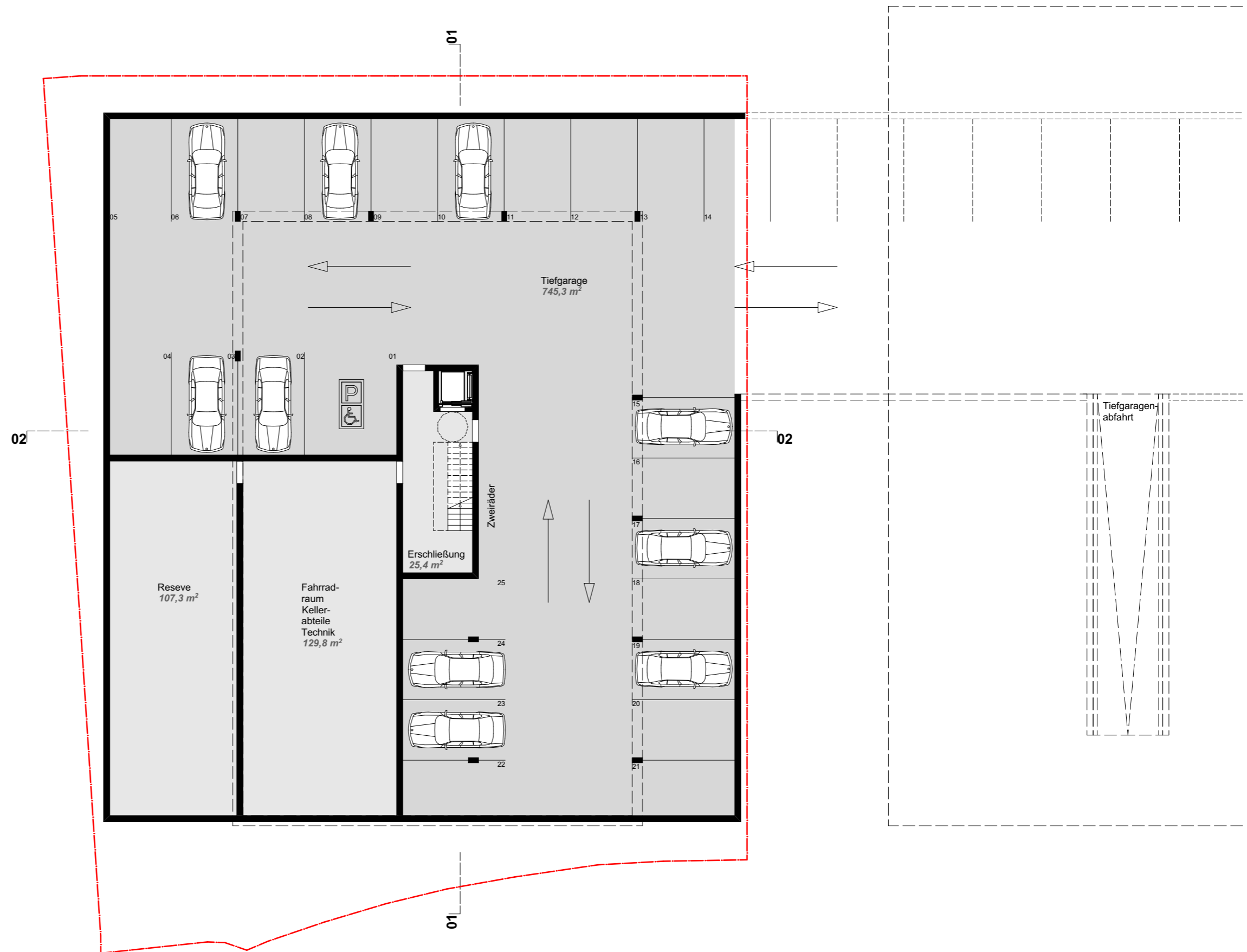
Grundstücksgröße
Gesamt

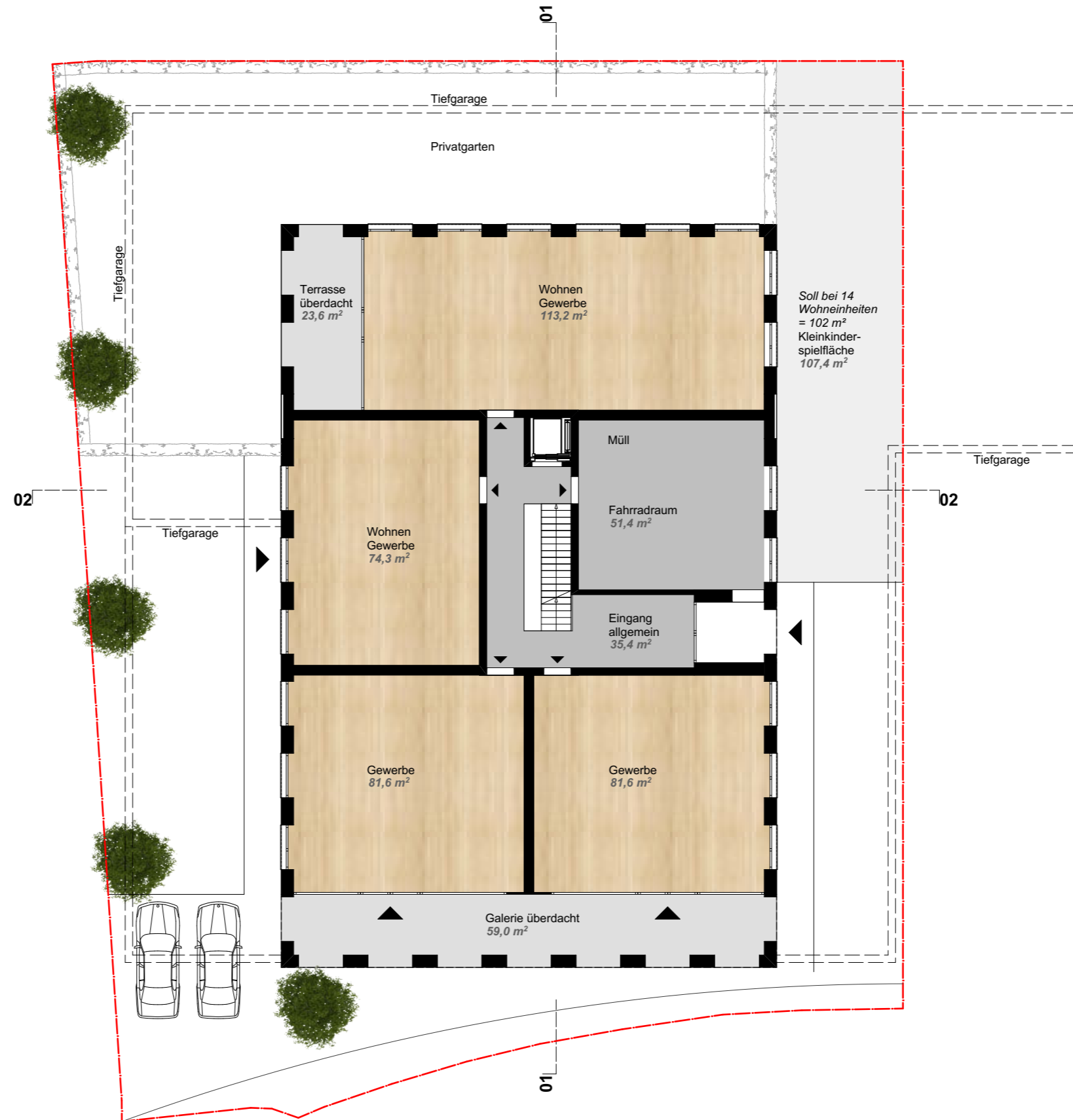
1 329,0 m²

Gesamtgeschoßfläche (GGF)
Nettogrundfläche (NGF)
Baunutzungszahl (BNZ)

$(GGF : NGF) \times 100 = BNZ$
 $(1\,480,5 : 1\,329,0) \times 100 = 111,4$

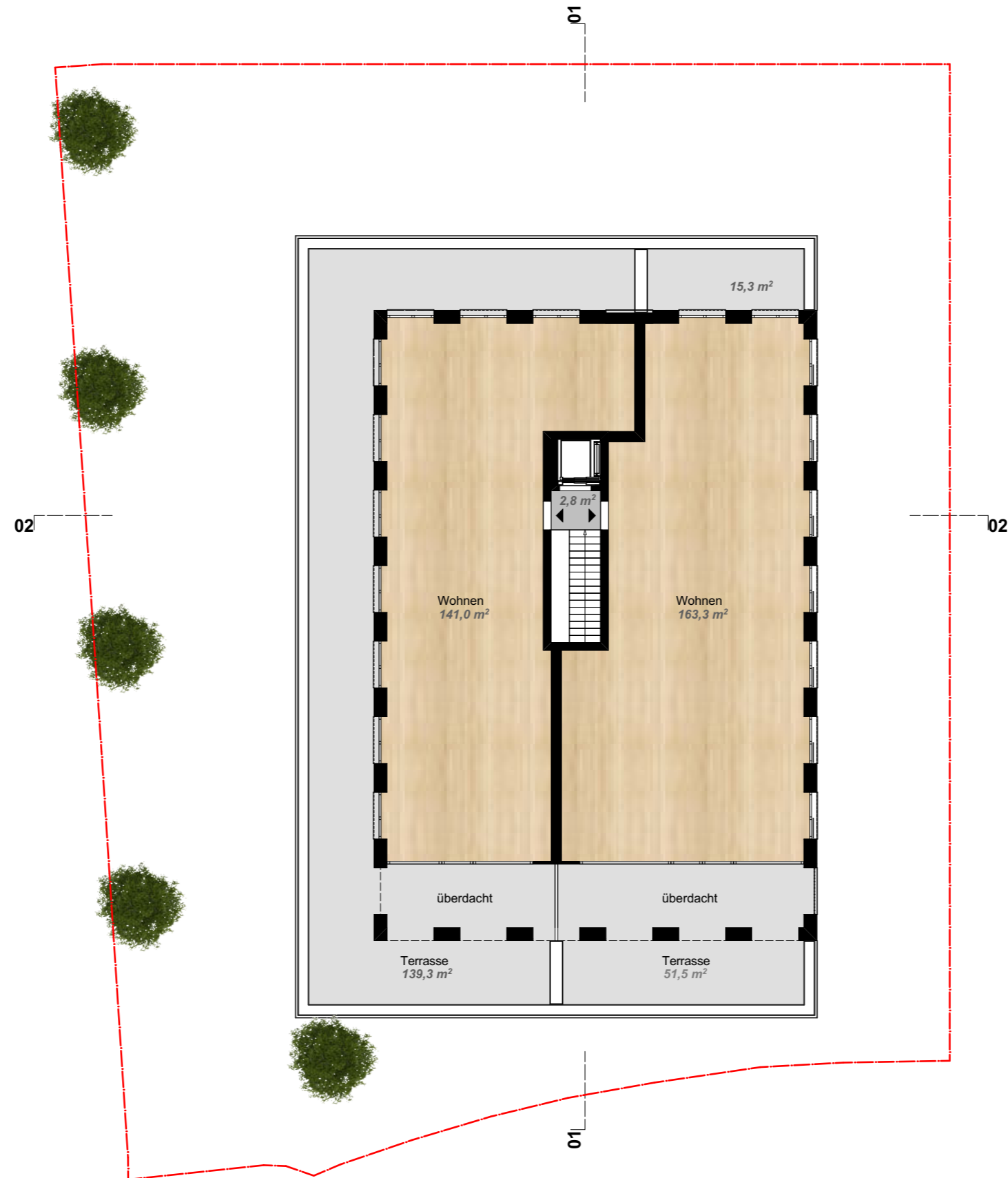
BNZ 110,0

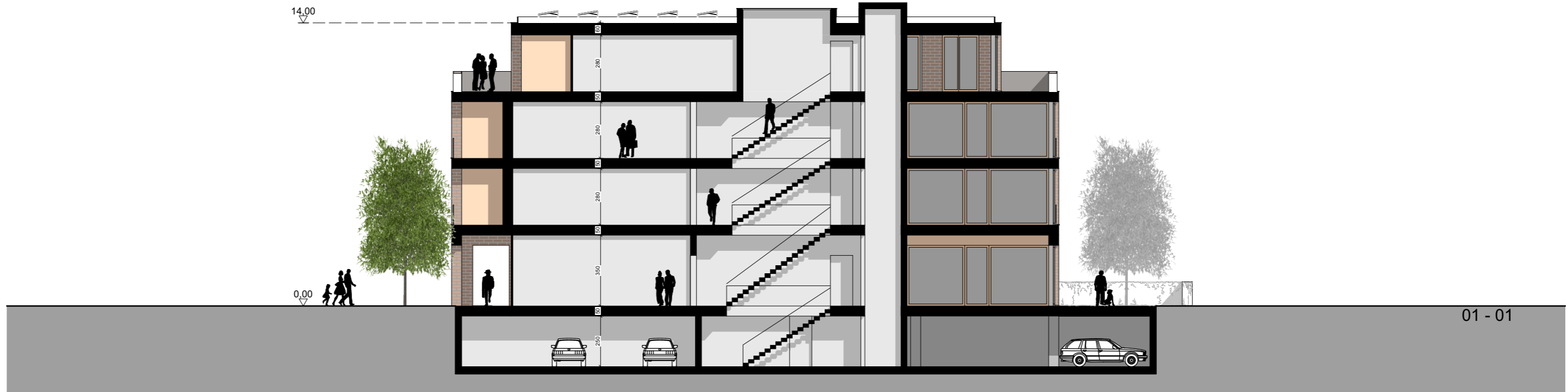














Norden



Osten



Süden



Westen































