

# AFFORDABLE HOUSES

87.6  
M2



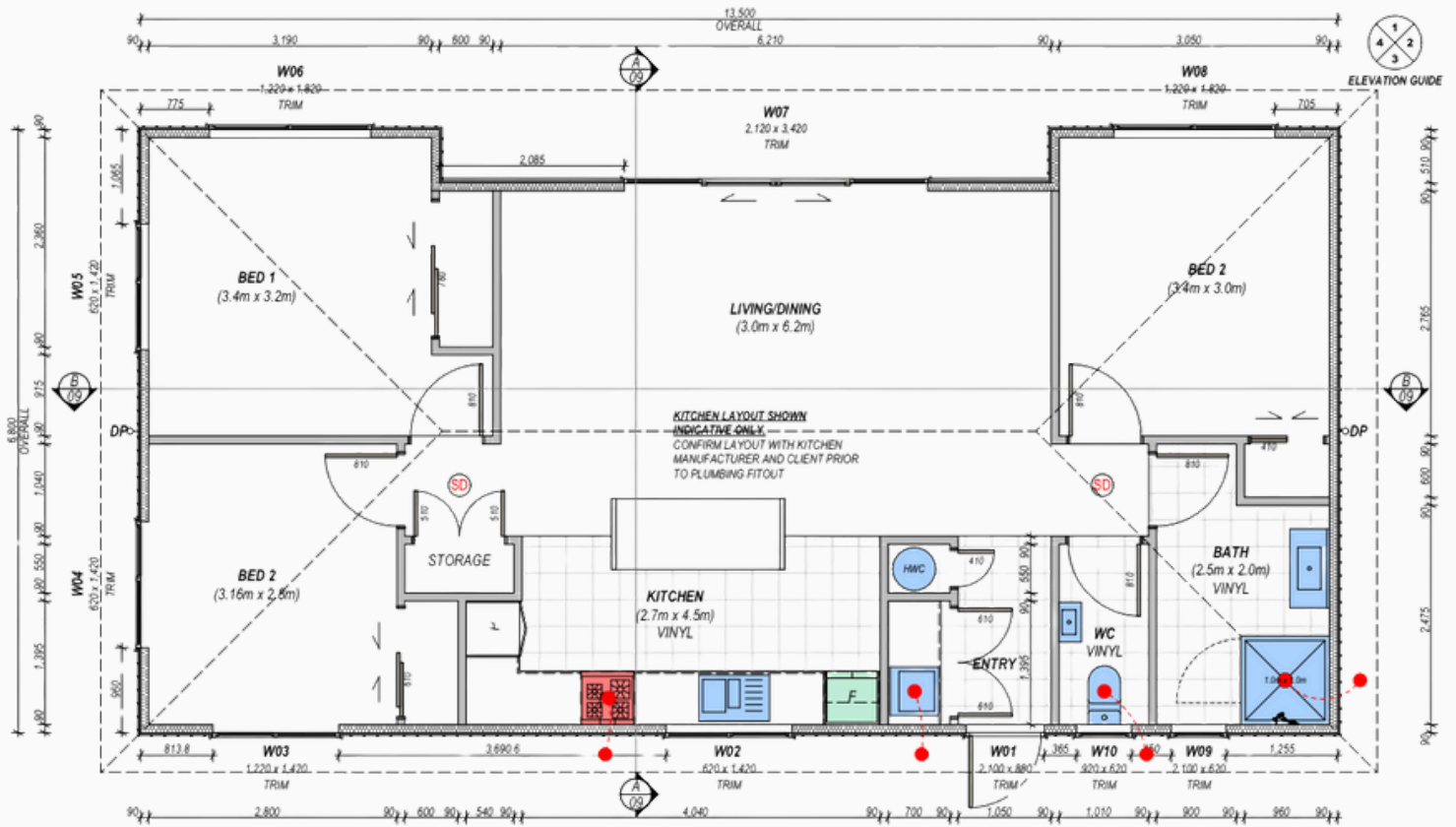
**AFFORDABLE HOUSES**

TRANSPORTABLE HOMES, LIVING SOLUTIONS



# THE FIRST HOME BRICK

POA



# SPEC LIST

- Heatpump
- LED Dovon Lights
- Stainless Oven and Ceramic Hob
- Stainless Range Hood
- Stainless Dishwasher
- Laundry Tub
- 900 X 900 Shower
- Vanity
- Toilet
- Vinyl Planking
- Carpet
- Designed for very high wind zones
- Wall/Ceiling and Underfloor Insulation
- Designed for All Coastal Areas
- Calfont or Hot water Cylinder
- Code of Compliance Certificate (Yard Consent)
- Shadow Clad/Timber Weather Board
- .55 Gage Colour Steel Max Roofing
- Double Glazed Aluminium Joinery

## OPTIONAL EXTRAS

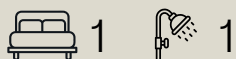
- Curtains
- All Vinyl (No Carpet)
- Transportaion/Piling
- Extra Power Points
- Site Consent
- Magnetic Insect Screens
- Fridge
- Decks
- Gas Cooking Upgrade
- Base Boards
- Engineer/Geotech







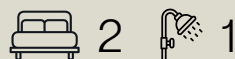
**THE TINY HOME**



35  
M2



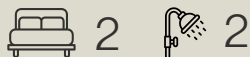
**THE STARTER HOME**



60  
M2



**THE INVESTOR HOME**



80  
M2



**THE FIRST HOME**



87.6  
M2



**THE FAMILY HOME**



100  
M2



**THE GROWING FAMILY**



120  
M2

## OFFICE

33 Norfolk Street, Regent, Whangarei

## CONTACT US

Phone: 027 943 0077

Email: [info@affordablehouses.co.nz](mailto:info@affordablehouses.co.nz)

Web: [www.affordablehouses.co.nz](http://www.affordablehouses.co.nz)