



Shenzhen Mightary Led Co.,Ltd (MRLED) is a state-owned listed Subsidiary of FURI company. It was established in April 2006 with registered capital of 1500 million RMB. MRLED is a national high-tech enterprise and specializes in R&D and manufacturing indoor and outdoor led displays.

MRLED (Headquarters) is located in Longhua District, Shenzhen. It has a large R&D and production base in Huizhou city with an 60,000sqm factory area, over 200,000sqm annual capacity and around 1,000 workers. MRLED has professional technical team, world famous brand production equipment and fully implement standardized management. The product technology and quality is the top in this filed and also has a good reputation in global market. Our products is widely applied in Asia Games, Shanghai World Expo, the country's major television stations, stations, airports, highways, World Beach Volleyball Tour and Australia Sydney Circuit, and other major event venues all over the world.

Professional LED Manufacturer,Your Loyal Partner  
Shenzhen / Huizhou / America / Netherlands



MRLED FACEBOOK



MRLED TWITTER

**HUIZHOU MIGHTARY LED CO.,LTD.**  
**SHENZHEN MIGHTARY LED CO.,LTD.**

ADD: MRLED Industrial Park, Xingke No.2nd,Dongxing Area,High-tech Development Zone of Dongjiang, 516127, Huizhou City,Guangdong Province,China  
No. 35F, HBC Huilong Center Phase 2 Building, Longhua District, Shenzhen,China

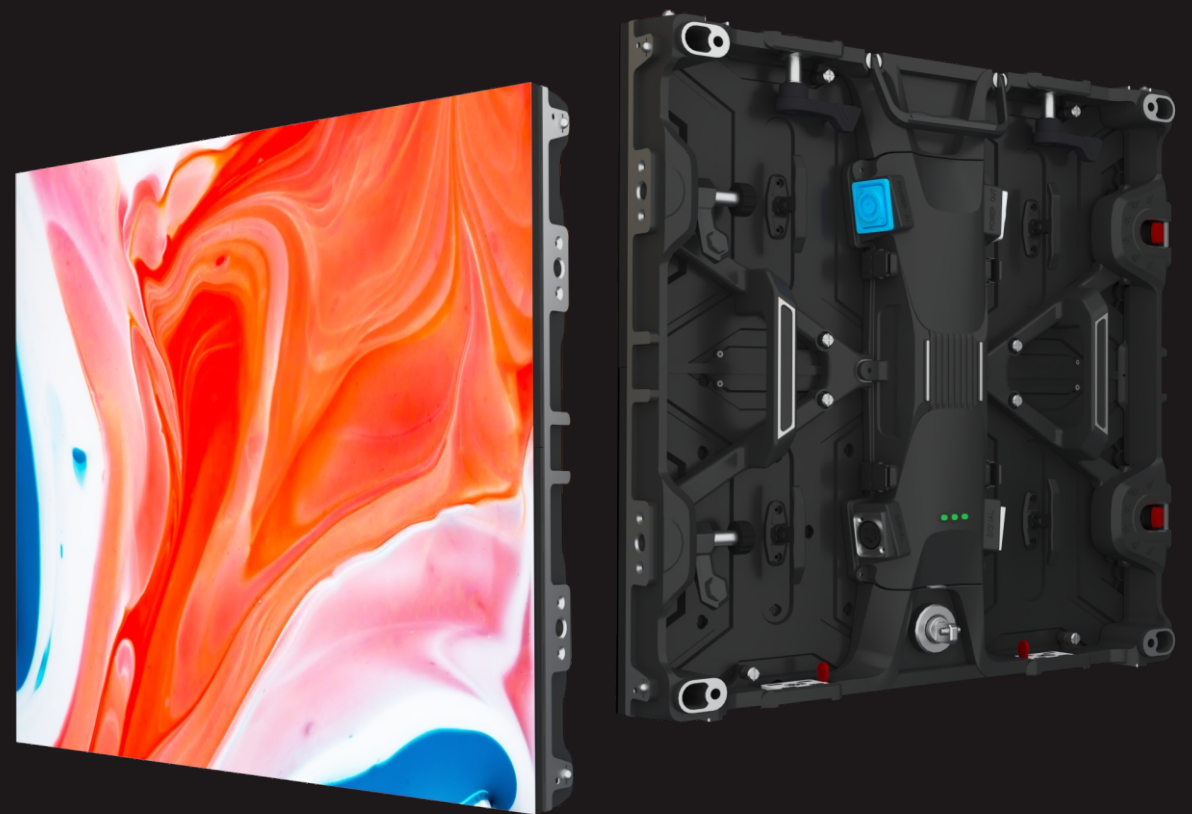
TEL: +86-755-81791776

FAX: +86-755-81791520

WEB: [www.mrled.cn](http://www.mrled.cn)/[www.mightary.com](http://www.mightary.com)

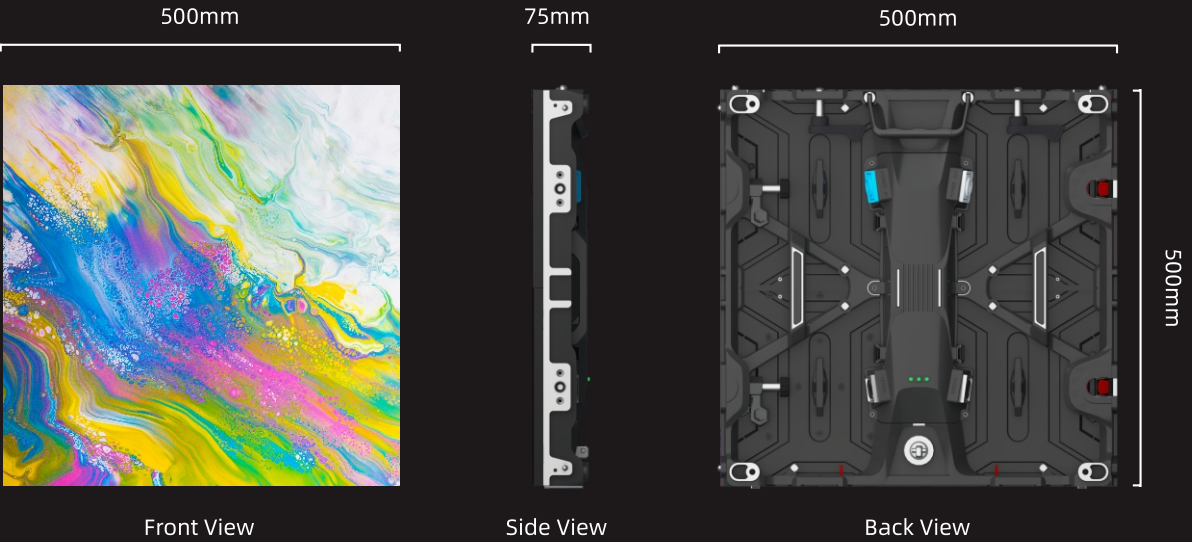
# RVO SERIES

## RENTAL LED DISPLAY



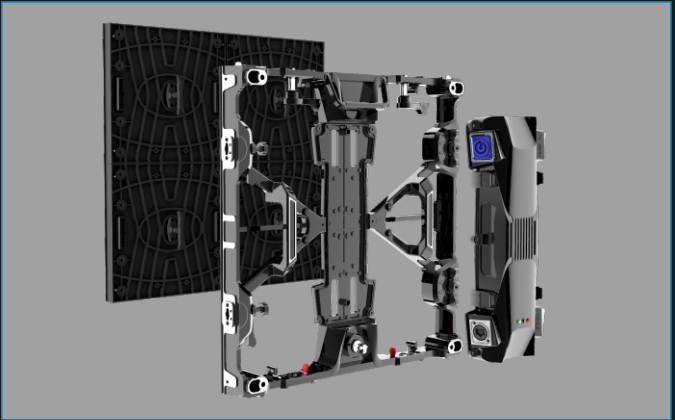


Product Size

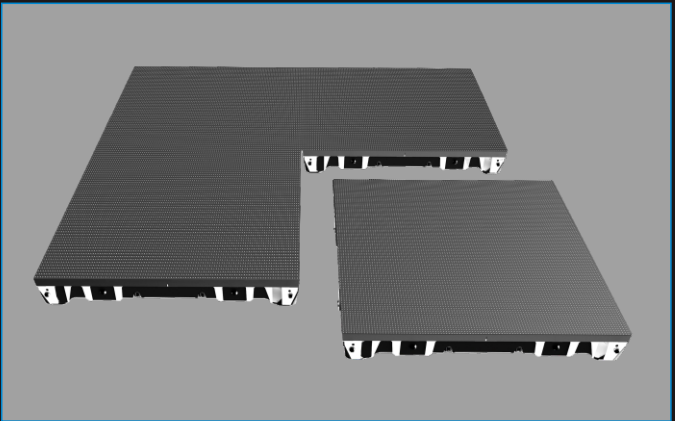


Product Parameters

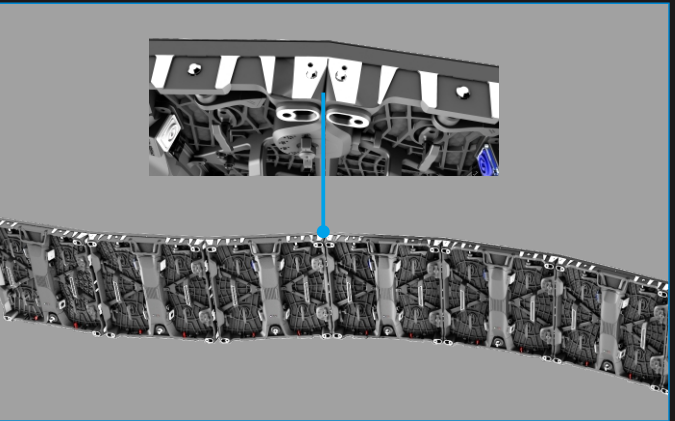
	Indoor			Outdoor
Model	RVO1.9	RVO2.6	RVO3.9	RVO3.9
Pixel Pitch/mm	1.95	2.604	3.91	3.91
Brightness/nit	800-1200	800-1200	800-1200	3000-5000
Contrast	3000: 1			
Refresh rate/Hz	3840			
Grey scale/bit	12/14			
View angle(horizontal/vertical)	160°/140°	160°/140°	160°/140°	140°/120°
IP Grade(front/back)	IP30/IP30	IP30/IP30	IP30/IP30	IP65/IP54
Power Comsumption(Max/Aver.)W/m²	436/144	436/144	436/144	480/160
Cabinet size/mm	500x500x75			
Cabinet Weight/kg	7.9	7.9	7.9	8
Cabinet Material	Die - casting Aluminum			
Module Dimension/mm	250x250			
Cabinet Resolution/Pixels	256x256	168x168	128x128	128x128
Pixel Density/Pixels/m²	262984	112896	65536	65536
Input A/C(Voltage)	100~240			
Operating Temperaturer/°C	-20~50			
Operating Humidity	10%~95%			
Signal Type(with video processor)	DVI、HDMI、SDI、DP、CVBS、VGA、 etc.			
Control Distance	Cat5e Lan cable:<100m;single-mode fiber cable:<10 kilometer			



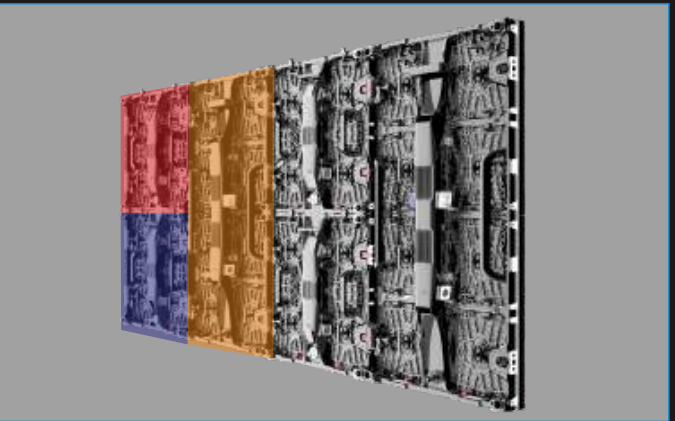
Full front maintenance.



Flat installation.



Curve installation.



500\*500mm and  
500mm\*1000mm cabinet  
can be mixed installation.