



A Quick Guide to Partition Works

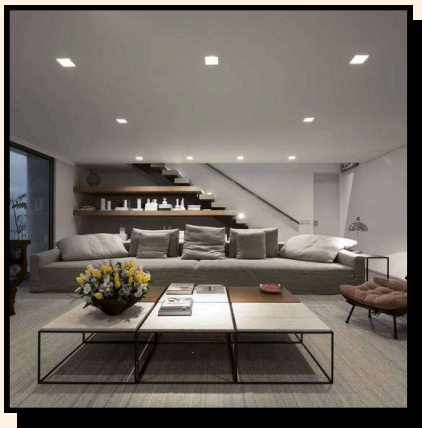


FALSE CEILING

A false ceiling is a secondary ceiling constructed below the main or the concrete ceiling. It is typically made with gypsum board and is suspended by metal frames. They can often be seen in living areas and bedrooms. If you want to have a false ceiling in wet areas such as bathrooms, a calcium silicate board will be used instead.

DIFFERENT TYPES OF FALSE CEILING

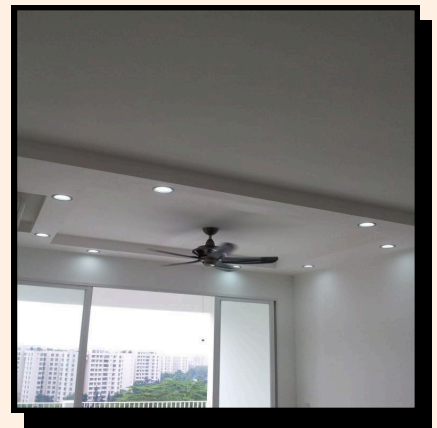
There are different styles of false ceiling you can do for your home such as flat false ceiling, false ceiling with cove lights or L-box false ceiling.



NORMAL FALSE CEILING (FLAT)



FALSE CEILING W/ COVE LIGHTS



L-BOX FALSE CEILING

ADVANTAGES

CONCEALS WIRINGS

There are usually trunkings that can be seen in the ceiling when lights or fans have been installed, and these unsightly items can be concealed with false ceiling.

SOUND INSULATION

False ceilings, due to their material composition, have the capability to absorb sound waves generated by neighbors residing above.

DISADVANTAGES

LOWERS THE CEILING HEIGHT

The drop of the false ceiling is usually around 100mm and hence, it can shorten the ceiling height and make the room appear smaller.

HARD TO CLEAN

For false ceiling with cove lights, there is an opening and a gap for the LED strip to be installed on, which will eventually collect dust. As it is at a height, it can be challenging to reach and dust it.

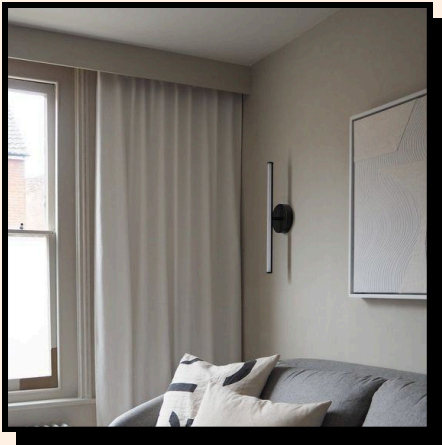
ADDITIONAL WORKS

Aside from constructing false ceilings, there are other items you can choose or need to have, together with the false ceiling.



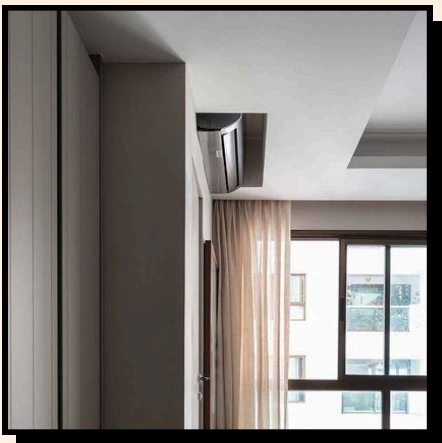
WOOD SUPPORT

Wood support is needed to be installed inside the false ceiling if there will be any heavy fixtures such as lights and ceiling fans, that will be installed onto the false ceiling. This wood is required for extra support as the gypsum board is not strong enough to support the weight of these fixtures.



CURTAIN PELMET

If your false ceiling extends to the wall containing a window, you have the option to install a pelmet to hide the curtain or blind tracks. This creates a tidier appearance and visually elongates the curtains or blinds by concealing the tracks from view.



AIRCON PELMET

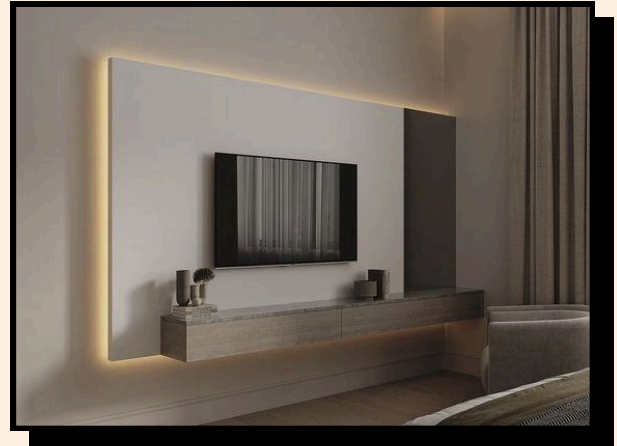
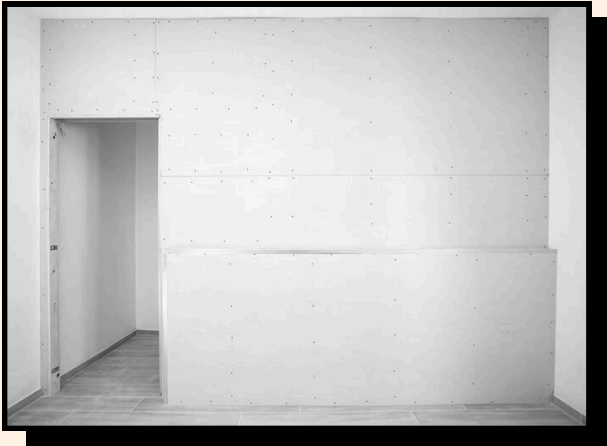
The aircon pelmet denotes the recess in the false ceiling designated for the air conditioning unit. Without it, the aircon would be positioned too low since it's installed beneath the false ceiling, which already reduces the ceiling height somewhat.

PARTITION

PARTITION WALL

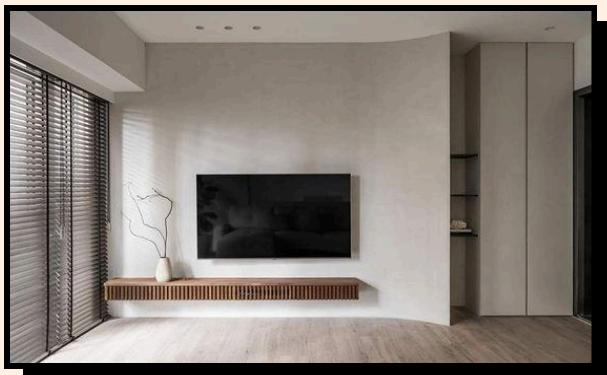
PARTITION WALL

A partition wall is an interior wall that divides or separates spaces within a larger area. It plays a key role in defining the functionality, privacy, and aesthetics of interior spaces in your home, providing solutions for organisation, comfort, and adaptability. It can also be used as a feature wall.

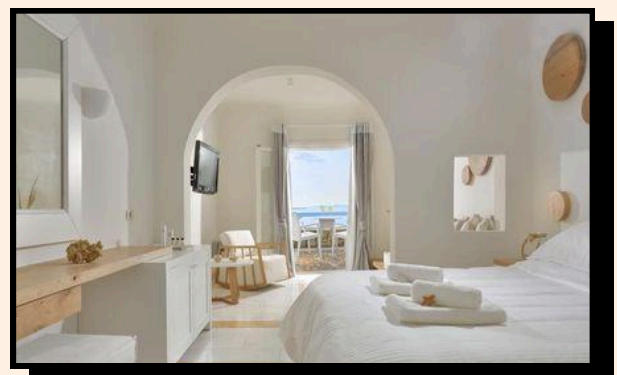


ENHANCE WALLS

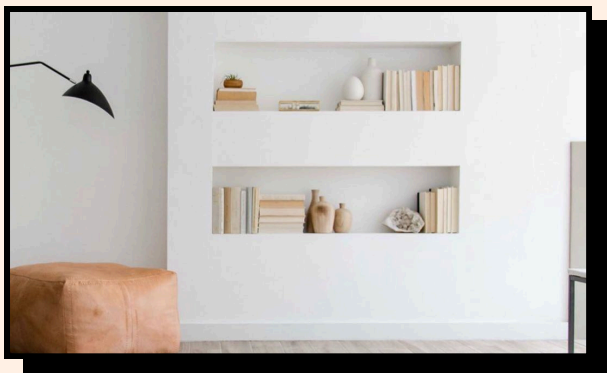
You can also enhance the look of walls with partition board. By incorporating partition boards, you can customise the design and layout of your space, creating unique focal points and enhancing the overall ambience.



CURVED PARTITION



ARCH



RECESSED SHELVINGS

You can add niches to create shelvings if you flushed a recessed wall with partition!

