



# Door Guides For Starters

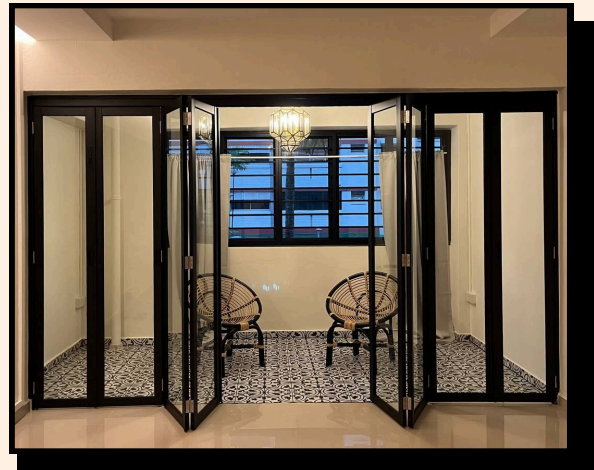


## GLASS & ALUMINIUM DOORS

Glass doors offer a multifaceted role in room design, providing both separation and transparency. By incorporating glass doors, interior spaces achieve effective compartmentalisation without sacrificing the sense of openness and connectivity. This allows for a dynamic and adaptable environment that enhances the overall functionality and aesthetics of the space. Aluminum doors and glass doors share similar functionalities but differ notably in their structural composition. Unlike glass doors, aluminum doors boast thicker frames that function as integral support structures. This added framework not only enhances the door's longevity but also ensures essential stability, making them ideal for various architectural and design applications.

## BIFOLD/COLLAPSIBLE DOOR

Bifold doors, also known as collapsible doors, are doors that are hinged in the middle to fold back against each other. They typically consist of two or more panels that fold to one side, allowing for a wider opening than traditional doors.



## SLIDING DOOR

Sliding doors are doors that operate by sliding horizontally along a track. They typically consist of one or more panels that glide along a track mounted on the top or bottom of the door frame. Single panel sliding doors can slide into a wall, which is also known as 'Pocket sliding door', or slide along the outer wall.



# DOORS

## GLASS & ALUMINIUM DOORS

### SWING DOOR

Swing doors, also known as hinged doors, are doors that open and close by swinging on hinges attached to one side of the door frame. They typically consist of a single panel that pivots around the hinges to either open or close. They can swing inward or outward, depending on the design and space constraints.

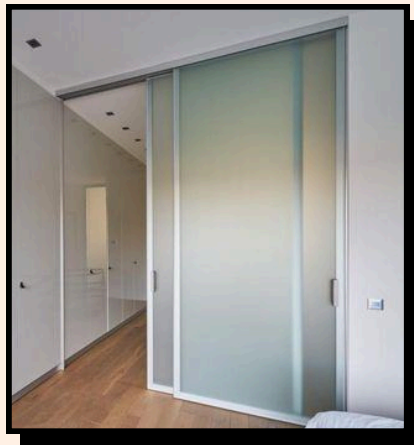


### GLASS PANELS

The standard design for glass panels is frameless with regular glass, but you can choose alternative designs to elevate the look of your glass door or enhance privacy of the room.



TINTED GLASS



FROSTED GLASS



REEDED GLASS

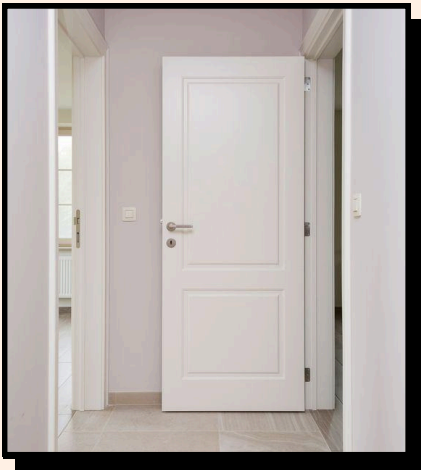
You can also change the glass of fixed panels such as shower screens to these designs!





## WOODEN DOORS

Wooden doors come in various styles, designs, and finishes to suit different architectural and design preferences. They can be painted, stained, or left unfinished to showcase the natural grain and texture of the wood. Wooden doors are known for their excellent insulation properties, providing thermal efficiency and soundproofing benefits.



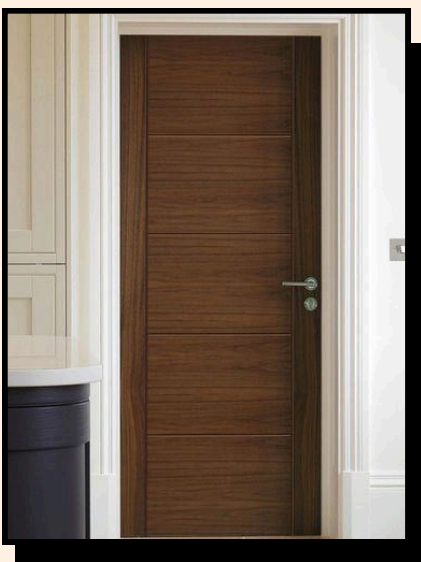
### CLASSIC WOODEN DOOR

Classic wooden doors offer a timeless designs characterised by elegant paneling and intricate detailing. They come in many designs and can be easily painted over to many different colours.



### HOLLOW CORE DOORS

Hollow core doors are interior doors constructed with a lightweight framework, typically made of wood or engineered wood, and filled with a honeycomb-like cardboard or plastic core. This method creates a hollow space within the door. They are generally lighter and more affordable compared to other wooden doors, but have less sound insulation and are less durable.

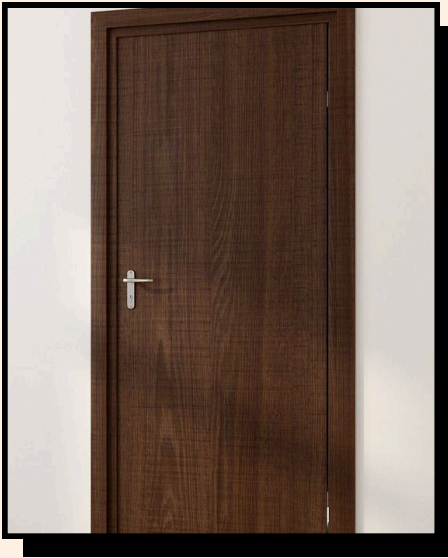


### VENEER DOORS

Veneer door are crafted by affixing a thin layer of authentic wood veneer onto a core material such as particleboard or MDF (Medium Density Fiberboard). They are stable and resistant to warping but they are prone to damage from impacts or moisture.

# DOORS

## WOODEN DOORS

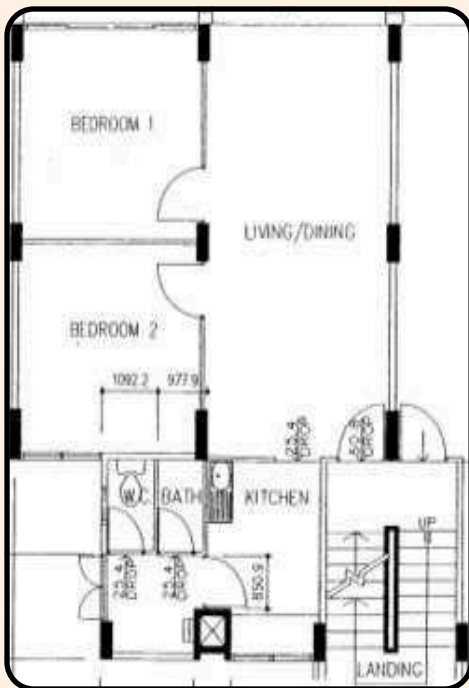


### LAMINATED DOOR

Laminated doors are a type of door constructed with a surface layer of laminate material bonded onto a core material such as particleboard or MDF (Medium Density Fiberboard). The laminate layer is typically made of thin sheets of decorative paper or plastic resin that are fused together under high pressure and heat. They are resistant to scratches, stains and moisture.

### MAIN DOORS

Understanding that the location of your unit impacts the material of your main door is crucial, as it determines whether a fire-rated door is necessary.



### FIRE-RATED DOOR

HDB units that are located within 3 meters of the lift lobby or staircase will need fire-rated main doors. With this requirement, you'll need to get 30 minutes fire-rated door.

Constructed from combustible materials, these doors will eventually succumb to fire. Nonetheless, they are designed to withstand the penetration of heat and flames, effectively slowing down the spread of fire for a specified duration. They help to compartmentalise fire in your unit.

Available main fire-rated doors:

- Varnished Fire-Rated Door
- Veneer Fire-Rated Door
- Laminated Fire-Rated Door

**If your unit is not near the lift lobby or staircase, you can opt for a normal main door.**

