



July 2025

Dear YCE Member

YCE had a very good AGM in Noss Mayo in early June, with about 20 members attending, good presentations, and an active and varied discussion. Members who would like to see copies of the slides presented on the day will find them on the YCE website>Meetings (<https://www.yealmenergy.co.uk/meetings>), together with a copy of the audited accounts for 2024.

Community Benefit Fund

Twelve applications were received by the deadline of April 15th. Seven awards were made totalling about £17,000 in awards. Successful applicants were:

- Brixton Parish for environmental work at Cofflete Mill.
- Sustainable South Hams to support an Energy Fair in the five parishes.
- Newton and Noss Village Hall to support battery installation to reduce energy consumption.
- WATER (Wild About The River Erme) to support water quality assessment.
- Yealm Community Electric Transport to support extension of electric water taxi service.
- Yealm Estuary to Moor to support removal of intrusive Himalayan Balsam.
- Yealmpton Bowling Club to reduce energy use in the club.

The CBF panel noted that several applications received had clearly not read or not understood the conditions, which was disappointing as a document on advice to applicants is available in an 'Information for Applicants' next to the application form on the YCE website. This wastes time of applicants and the CBF panel, but it's not entirely clear how to do this better. Advice and suggestions gratefully received.

Solar farm production

Electricity production figures for May were very good: 741,000 kWh at Newton Downs; 637,000 kWh at Creacombe; and 434,000 kWh at Marlands.

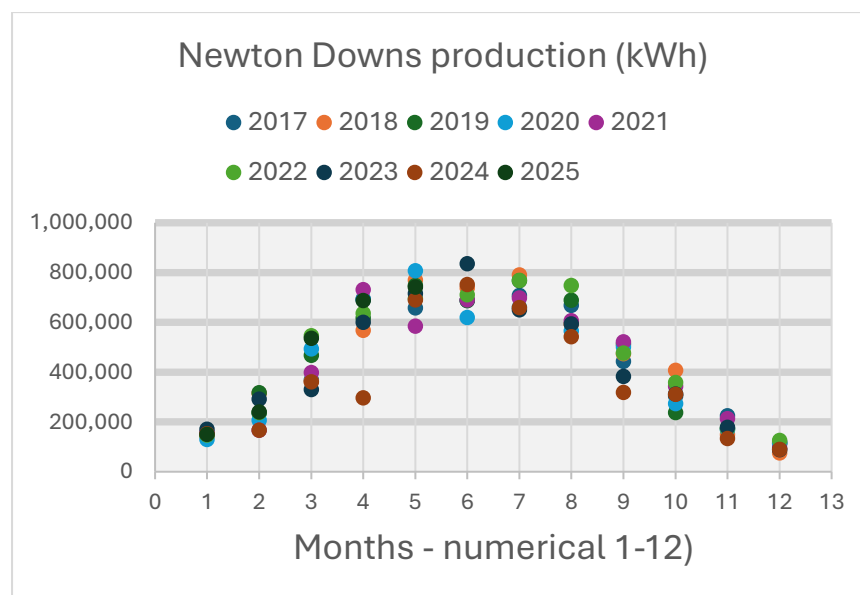
For the year to date (January to May), the three farms have generated 5,746,483 kWh, and for each farm the YTD production is higher than at any time since they were commissioned.

At the AGM it was suggested that scatter graphs might be useful for visualising the large between-year variation that can occur for any month. These are shown for

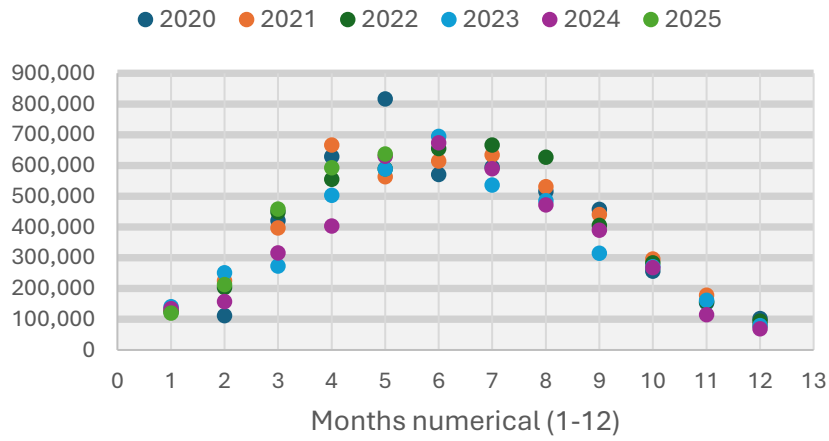
Second share offer

In the meantime, the board is considering asking members, supporters, and others about their attitudes to investing in an expression of intent, and this may be coming your way to ensure that when the second share offer can go ahead, it proceeds quickly and smoothly.

Andrew Moore, Chairman



Creacombe production (kWh)



Marlands production (kWh)

