



HARSH
INTERNATIONAL

Rev. 2026.02



DELIVERY BOX

Advanced Feed Delivery Platforms

HARSH INTERNATIONAL

Engineered & Manufactured in Eaton, Colorado
Since 1948

HARSH INTERNATIONAL

DELIVERY BOX

ENGINEERED FOR RELIABLE FEED DELIVERY

The Harsh Delivery Box Series replaces outdated chain floors with a dual lower auger system engineered for controlled, low-torque feed movement and fewer wear components. Hydrostatic drive performance and all-steel construction deliver dependable uptime in the toughest environments.

Every Harsh Delivery Box comes standard with TTControl—an advanced electronic hydraulic control system that delivers precise feed flow, responsive operation, mechanical safety features, and tighter control over every feed cycle.

SYSTEM ARCHITECTURE

STRUCTURAL PLATFORM

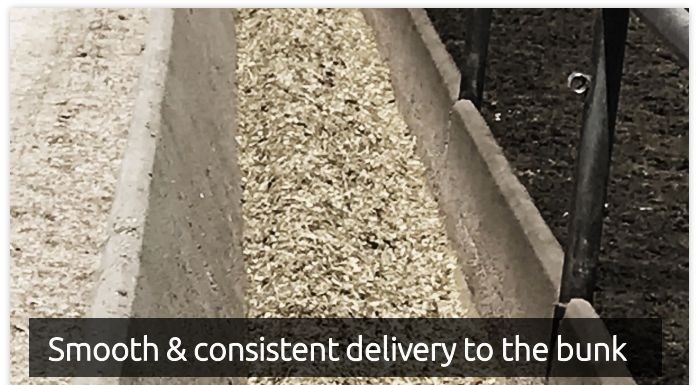
6" x 6" heavy wall tube sub-frame
3/8" floor w/ 10 ga stainless liners
7 ga sidewalls w/ 10 ga stainless liners

FLOW MANAGEMENT

Push auger design
Independent floor auger drives
48" extendable cross conveyor
Hydraulic discharge door

CONTROL SYSTEM

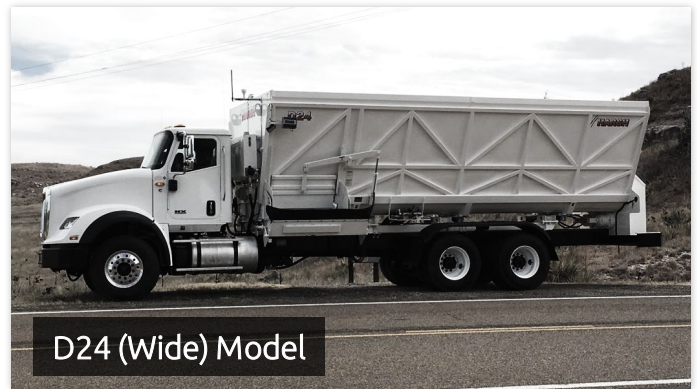
Low-pressure hydraulic drive
Driver-friendly in-cab interface
6-point scale system compatible

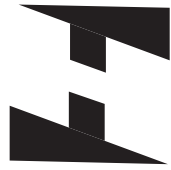


AVAILABLE MODELS

"N" denotes narrow body style

Specification	D21 N	D21	D24 N	D24
Capacity	1100 ft ³	1200 ft ³	1300 ft ³	1400 ft ³
Height	94"	94"	94"	94"
Overall Width	107"	123½"	107"	123½"
Overall Length	284"	284"	322"	322"
Min Power Required	330 HP	330 HP	350 HP	350 HP
Cab to Trunnion	174"	174"	190"	190"
After Frame	90"	90"	90"	90"



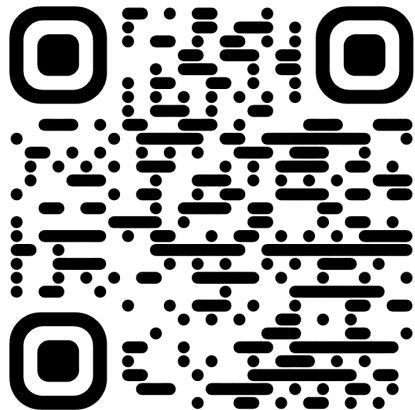


HARSH

INTERNATIONAL

+1 (970) 454-2291

Hydraulic Hoists | Feed Mixers | Antennas
Engineered & Manufactured in Eaton, Colorado since 1948



Explore Our Product Lines
harshenviro.com