

WorldHope™
Ministries International

2025 Annual Report



Dear WHMI Family, We are BETTER TOGETHER!

John Donne (1572-1631), the famous English poet and cleric wrote: “No man is an island, entire of itself; every man is a piece of the continent, a part of the main. If a clod be washed away by the sea, Europe is the less.” Among all the amazing things we have seen and learned this year, one of those that stands out is this: we are better together! Donne was describing what the Apostle Paul wrote (Ro 12:4-8): “For as in one body we have many members, and the members do not all have the same function, so we, though many, are one body in Christ, and individually members one of another.” Throughout this report you will see this recurring theme. WHMI is not the work of any one staff member, any one national leader, any one donor. This is the effort of many, united in a common goal to see communities transformed through the work of God in healthy churches led by trained pastors and ministry leaders.

Here are a few of the highlights you will discover in this report:

GROWTH IN LOCATIONS AND COURSES TAUGHT:

In 2024, we taught 976 courses in 289 locations. This past year we taught almost 1,500 courses in 368 locations spread across 58 nations. When I say we... Over 91% of those courses were taught by nationals we trained/vetted and coached to teach others. This whole endeavor is a beautiful global partnership. We are BETTER TOGETHER.

ADVANCES IN CURRICULUM, TESTING, AND DATA GATHERING:

This past year we began the roll out of our much-improved curriculum. The improvements involve both structure and content. A team of writers, including missiologists, theologians, and practitioners have spent hundreds of hours working through each course. So much of what we have improved is based on the data we gather through testing, surveys, and feedback from instructors and students. Again, being together matters. Our Central Service Staff in the U.S. works to gather and sort thousands of pieces of data, all of which helps us know what is happening in the field and what we need to do to make it better. Yes, we are BETTER TOGETHER!

INCREASING IMPACT OF THE INVESTMENT :

With the rapid growth of the ministry, we have focused significant efforts to help others know about and invest in this work. And praise the Lord, we saw measurable increases in giving in 2025. The real story is the growing impact of each dollar invested in this work. The cost for us to deliver quality theological education continues to fall, both per student per year and the cost to deliver a single course. But there is more to the story. The investment of donated hours is multiplying every dollar given. Because most of these courses are being taught around the world by volunteers (91% nationals, 9% U.S.-based),

we can do more with what you invest. By combining your investment and their sweat equity, we are efficient and lean. And, of course, BETTER TOGETHER!

NEW FRIENDS AND NEW PARTNERS:

Through this past year, we have added new ministry partners, new academic partners, and partners engaged in project work. All of these are part of a large and complex network of Kingdom minded people working to see communities transformed. Through our Global Reach work, multiple sustainable projects have been done, working beside nationals to help see community transformation. New partnerships with other gospel-focused, likeminded ministries and institutions demonstrates our commitment to work together with others rather than in a silo—in the Kingdom, we are BETTER TOGETHER.

If any of this is interesting to you, read on! You are in for a treat. Whether you are reading as a current or prospective investor, a longtime prayer partner, a team member who has worked on a community transformation project, or just someone who loves hearing stories of what God is doing around the world, turn the page!

We are better together!



Stuart Sheehan, President & CEO



And the things which you have seen and heard from me in the presence of many witnesses entrust to faithful people who will be able to teach others also.
- 2 TIMOTHY 2:2

Stories From the Field

FRANCOPHONE WEST AFRICA:

“We started teaching our WHMI Bible Institute to a group of 200 pastors and church leaders in N’djamena, Chad in early 2022. I went there 3 times to teach and to prepare to graduate in June of 2025. When the US government stopped approving visas from Chad, the Chad government reciprocated by refusing US citizens visa approval and I missed the graduation. However, my team of leaders in Cameroon were able to fly in my place and perform the graduation and hand out diplomas. Since then, our local Chadian council leader, Pastor Miaki Nestor, began to seek replication to make WHMI accessible to all of Chad, as is our mission and vision according to Jesus’ mission and vision for His Church in Matthew 28:18-20 and 2 Timothy 2:2.

In the last 6 months they’ve vetted 7 of our graduates to become national/local instructors and have opened 5 new locations with 6 more signed charter agreements to start in 2026 with a total of 300+ new students.

In the pictures below, you will see Pastor Nestor’s latest trip sequence as he traveled to Fianga, Chad, to teach a new group of students. He started in the back of a pick up with about 20 others. Then 6 hours later, got into a boat to cross the river. On the other side, it was a motorcycle ride of 3 to reach Fianga. After 3 days of teaching, they took a student “family” pic.” - CRAIG KENDRICK



LATIN AMERICA:

“In a remote part of Brazil, a new surge of false Christianity emerged quite suddenly and gained popularity at a shocking rate. It is another form of the very familiar prosperity theology that bleeds into paganism. Unfortunately, most of the churches in the regional Baptist convention were drawn away to follow the new teachers, but a minority of the churches stayed faithful. After graduating the WHMI Bible Institute location in this area, the chairman of our council told me that it was the Bible Institute courses that gave the pastors the intellectual firepower to stand firm and confront the new movement. They would hear the new teachers speak at convention meetings and were able to publicly say “Your gospel is missing X so it is not the Gospel of Christ” or “That’s not what that text means, it clearly means X according to the context”. They were unable to keep the convention from splitting, but the teachers of the true Gospel were able to stand firm and they drew on their WHMI training to do so. As the chairman told me this story, his eyes glistened with tears of gratitude.” - DUSTIN MEYERS

SOUTHERN AFRICA:

From Missionaries in Botswana - “Eight years ago, we began a journey with World Hope Bible Institute to train pastors and ministry leaders across Botswana. Many of them serve faithfully in small villages, leading churches with deep commitment but little access to formal theological education. Some cannot afford tuition, others lack transportation or a steady internet connection, and many speak only Setswana. Until now, the training materials have been available only in English. However, this past week, we received fantastic news that World Hope has raised the necessary funds to translate the full curriculum into Setswana, with a completion date set for December 2, 2025. Our hearts overflowed with joy as we realized how powerfully this will open the door for hundreds more pastors and leaders to study God’s Word in the language of their hearts. When I shared the news with pastors in Thabala, Mmashoro, Mabeleapudi, and Masunga, their responses captured the heartbeat of the nation. Pastor Benjamin Kabika said with delight, “Great. People will enjoy reading the material.” Pastor Louis Thanile’s voice trembled with gratitude, and Pastors Dan Gasebolelwe and Kutlo Mokgethi gave praise to God for His goodness. This translation has the potential to reach more than 200 pastors and ministry leaders, who will now be able to study, teach, and disciple others using materials they can fully understand. In that moment, we were reminded that God’s Word has never been bound by language, culture, or geography. He always finds a way to speak life into the hearts of His people.” - JAMES CLARK



Growth in Students and Countries Served

FROM 2024 - 2025

 **289 to 368** LOCATIONS

 **56 to 58** NATIONS

 **3972 to 5629** GRADUATES

 **8836 to 10918** STUDENTS

TOTAL NUMBER OF STUDENTS TAUGHT IN 2025

12575

2025 was a milestone year! In September, we gathered to praise the Lord for over 10,000 students and 5,000 graduates to date. The data above shows the Lord clearly continued to expand our ministry into the final quarter of 2025. One particularly noteworthy expansion was in the number of WHMI Bible Institute graduates. We celebrated over 42 graduations with 1657 graduates around the world, which is a 42% increase from 2024. To God be the Glory!!

WHMI Courses Taught Per Year:

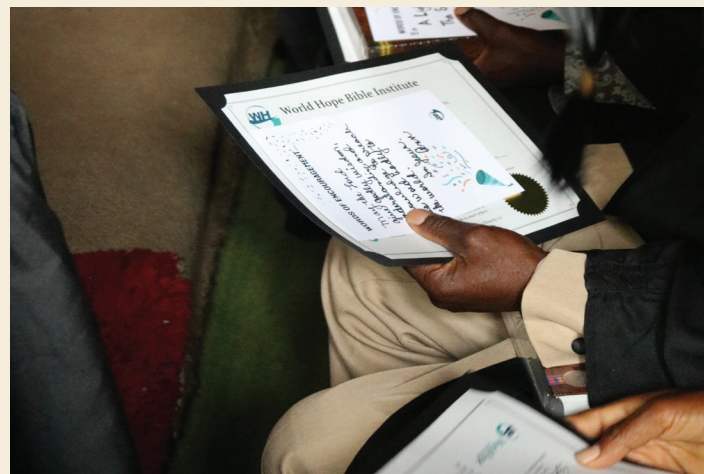
YEAR 2022 - 454 COURSES

YEAR 2023 - 756 COURSES

YEAR 2024 - 976 COURSES

YEAR 2025 - 1468 COURSES*

*Anticipate exceeding over 1500 courses; awaiting approximately 40 reports from remote locations.



“There will be improvement in the preparation of sermons and in the preaching. There will be more saved souls. There will be change in the character of the leaders in different represented church groups.” - FROM GABON

“These classes represent a long obedience towards further deepening one’s understanding of the mission of the church. Interacting with them as we walked through the material is always a highlight as we consider together the biblical teaching on the mission of the church.” - FROM ZAMBIA

“Many of the pastors and ministry leaders had never been trained to see the bible as one unifying message starting from Genesis to Revelation. They all promised to continue to learn and improve their teaching and preaching skills.” - FROM SURINAME

Graduation Photos & Testimonies



“The pastors who attended this training have had no other access to theological training. Everyone who attended was extremely grateful for the opportunity and hungry for the teaching. Seeing them grow in their knowledge and faith has blessed my soul. I think the Kingdom impact will continue to unfold as the gospel is proclaimed in Lesotho.” - FROM LESOTHO

“This course is helpful because the material is really needed in the ministry. The students who have taken this course will definitely go home and teach this material in their respective congregations.” - FROM BANGLADESH

“WHMI Bible Institute has not only given us a diploma, but it has also given us knowledge, dignity, hope, and a love for learning.” - FROM A GRADUATE IN KENYA

“Students are inspired by the teaching to do the mission. Many people will come to Christ as the students were inspired by the power of evangelism.” - FROM SOUTH SUDAN

“It has brought motivation to us and hunger for soul winning. I believe I’m going to be different in the field. I see a future of harvesting more souls.” - FROM KENYA

Where is WHMI?

■ CURRENT NATIONS: 58

■ FUTURE NATIONS: 17



WHMI Bible Institute:

MAKING THEOLOGICAL EDUCATION GLOBALLY ACCESSIBLE SO CHURCHES CAN BE HEALTHY AND ENGAGED IN COMMUNITY TRANSFORMATION.



DR. BILLY ROSS
CMO & INTERNATIONAL DIRECTOR OF WHMI BIBLE INSTITUTE

In this Annual Report, you have seen the statistics for 2025 – approximately 11,000 students were taught across 58 nations in 368 locations. In addition, over the past three years, the number of courses we have taught around the world has grown from 756 in 2023 to 976 in 2024 to 1468+ in 2025! We give glory to God for these results, but we also recognize that God works through people! “Better Together” is more than a slogan, a motto, or an idea; it is a reality for WHMI! Directors, instructors, administrators, accountants, and others are essential as we seek to fulfill our mission.

Another group of people who are vital to WHMI’s ministry is our national partners and instructors who are a product of our strategic approach to pastoral training which focuses on replication (2 Tim. 2:2). First-generation students (the ones we teach) become second-generation instructors. As a result, national instructors taught 91% of our courses this year. This strategy enables us to expand our locations, indigenize our instruction, and allows WHMI’s theological training to enter countries into which Americans are not welcome.

For example, in West Africa it is unsafe for Westerners to enter Niger and Chad. And only the capital city is safe

to enter in Mali, Guinea, Burkina Faso, Central African Republic, and Congo. What do we do? We train those who can penetrate these areas to become our national instructors. David and Doli from Ivory Coast traveled by bus to teach in Gaoua, Burkina Faso – a place to which no westerner could have gotten easily or safely. But praise the Lord, they can, and they did! Abel graduated from our location in Bangui, Central African Republic. He became our Regional Coordinator and led the mobilization and chartering of 8 new locations as well as vetting 7 graduates to teach. The farthest location, Bria, required a UN plane to get him there to start the teaching in November with one of our graduate instructors. Why the plane? The roads are terrible and Jihadists are everywhere! Although westerners couldn’t go there, we praise the Lord that they could, and they did!

Truly astonishing work is being done around the world as God raises up national leaders and instructors to become vital parts of the WHMI international staff. With their presence and ministry, we are truly “Better Together”!

“Several students were kind enough to share specific things from the teaching and our interaction that will help them. I’ve taken several short-term teaching trips internationally. Each time, God reminds me that this world is not our home, that His Kingdom is our calling, and that we are all on mission wherever He has us serving. This trip, and in particular working with World Hope, provided the same reminder with the additional encouragement to pray and consider making this ministry a consistent part of my yearly cadence.” - INSTRUCTOR IN CHILE

The Importance of Partnerships



CASEY HOUGH
DIRECTOR OF PARTNERSHIPS & CURRICULUM
DIRECTOR, WHMI BIBLE INSTITUTE EUROPE

In Philippians 1:3-5, the apostle Paul begins his letter to the church in Philippi by thanking God for their “partnership in the gospel from the first day until now.” The word translated as “partnership” is the Greek term *koinonia*, a word often rendered as “fellowship” in the New Testament. Yet *koinonia* goes beyond mere association or relational warmth. It carries the idea of shared life, shared purpose, and shared labor for the sake of the gospel.

When WHMI speaks of partnership, this is the vision we have in mind. Partnership is not simply cooperation in logistics or alignment around strategy. It is fellowship in the gospel that results in sustained, cooperative effort to fulfill the Great Commission together. As is often said in Christian ministry, we are better when we labor together for the glory of God and the good of the global church. WHMI’s work is built on this conviction.

Over the years, God has been pleased to strengthen our ministry through a growing network of partnerships that expand our capacity to serve pastors and churches around the world. In recent years, WHMI has established partnerships with organizations (see list below). Each of these partnerships reflects a shared commitment to theological faithfulness, pastoral formation, and long-term investment in local churches.

These partnerships are not uniform in structure or scope. Some are regional, others denominational, and others oriented toward specific ministry needs. Yet all of them serve the same end: equipping pastors and leaders with sound doctrine, practical training, and resources that strengthen the church from within rather than imposing solutions from outside.

In addition to these regional and ministry-specific partnerships, WHMI has also become an associate member of the International Council for Evangelical Theological Education, a global community of evangelical theological educators who share a commitment to faithful, contextual, and accessible theological training. This relationship has further strengthened WHMI’s ability to collaborate with like-minded institutions across the world.

One of the most significant recent developments flowing from this relationship has been the establishment of a partnership with Kairos University. Through this partnership, WHMI is now positioned to offer fully accredited theological education pathways in regions where pastors are required to pursue formal theological credentials in order to serve effectively. This represents an important step forward in our ongoing commitment to combine theological depth with practical accessibility, ensuring that pastors are equipped not only to meet institutional requirements, but to shepherd Christ’s church faithfully in their local contexts. God willing, we will begin field-testing this new development in late 2026.

At every level, WHMI’s partnerships reflect a shared conviction that the work of training pastors and strengthening the church is not meant to be carried out in isolation. We are grateful for these relationships and remain committed to cultivating partnerships that embody true *koinonia* for the sake of the gospel and the flourishing of the global church.

A FEW OF OUR PARTNERS:

(SOME PARTNERSHIPS REMAIN CONFIDENTIAL FOR SECURITY REASONS; THIS IS A REPRESENTATIVE LIST.)

- African Baptist Theological Education Network (ABTEN)
- Asian Pacific Baptist Fellowship
- Baltic Pastoral Institute
- Baptist Convention Seminary of Botswana
- CURE Hospitals
- Design Outreach
- International Ministerial Fellowship
- International Mission Board (multiple affinities)
- Jesus Film
- Multiplication Network
- Shema Madagascar
- Zimbabwe Council of Pentecostal Churches



Scan here to meet Japeth Luchivya, graduate of the 4th generation WHMI Bible Institute in Kenya. Japeth now serves under James Munene, our Regional Coordinator for East Africa.



Pictured, Japeth and our Director of East Africa, Wes White, teaching alongside one another in Kawangware, Kenya.



A Theological Foundation to Sustain a Long-Term Ministry: Our Curriculum

At the heart of WHMI's mission is a simple conviction: pastors are best served when they are trained with theological depth, pastoral wisdom, and materials that are accessible within their own linguistic and cultural context. Curriculum, therefore, is not a secondary concern for WHMI. It is one of the primary means by which we seek to strengthen the church and steward the calling God has entrusted to us.

Over the course of the last few years, WHMI has given focused attention to the development, revision, and expansion of a unified theological curriculum designed to serve pastors across diverse regions of the world. This work has involved more than the creation of individual courses. It has required a deliberate effort to build a coherent, linear curriculum that moves pastors and church leaders through the core disciplines of biblical studies, theology, and pastoral ministry in a way that is theologically faithful, pedagogically sound, and contextually reproducible. Our aim has been to ensure that pastors receive a well-ordered theological foundation that can sustain long-term ministry.

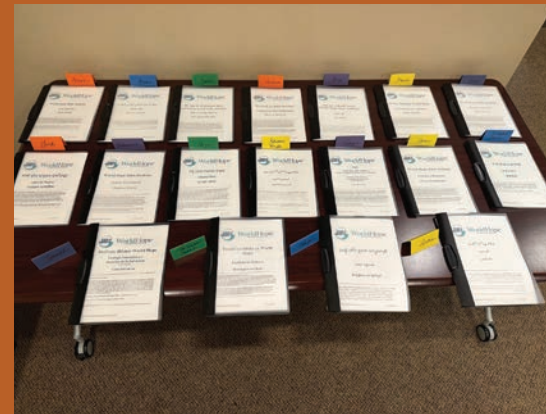
Alongside curriculum development, translation has remained one of the most significant and demanding aspects of WHMI's work. Faithful translation is essential if theological education is to serve the church rather than distort it. For this reason, WHMI has continued to invest substantial time and resources into the careful translation of its curriculum into multiple languages. This process requires more than technical accuracy. It demands theological precision, sensitivity to theological vocabulary already in use, and an awareness of how doctrinal language is received within local church contexts.

Presently, our new linear curriculum is available at various stages of development in the following languages:

- Amharic • Arabic • Baoulé • Chichewa • English • Eton • Ewe • Farsi • FON
- French • Fulani • Fulfulde • Hausa • Hindi • Indonesian • Kirundi • Latvian • Luganda
- Malagasy • Marba • Ngambaye • Odiya • Pakistani Punjabi • Portuguese • Sango • Setswana
- Shona • Simplified Chinese • Slovenian • Spanish • Tanzanian Swahili • Telugu • Urdu

To support this work, WHMI has partnered with Christian Lingua and has collaborated closely with regional reviewers, instructors, and pastors to ensure that translated materials are both faithful to the original content and usable in the classroom. This collaborative process has helped guard against theological ambiguity and has strengthened trust with our partners in the field, many of whom depend on these materials as primary training resources.

In addition to expanding translations, WHMI has also been engaged in revising and updating existing courses and adding new courses to address emerging issues. This includes aligning course materials with a standardized assessment structure in the form of course exams and ensuring that courses taught across different regions maintain a shared theological core. These efforts help preserve unity across the global WHMI network while still allowing for appropriate contextual application. A clear example of this commitment can be found in the introduction of a brand new course, which covers a theology of blessing and suffering. Much of the global church is plagued by a false teaching often known as the "health, wealth, and prosperity gospel." Such false teaching is not only theologically destructive but also personally oppressive, especially to those living in poverty. By the grace of God, we are seeking to roll out this new course in 2026 to combat this false teaching and equip pastors and church leaders to tear down this falsehood in their communities.

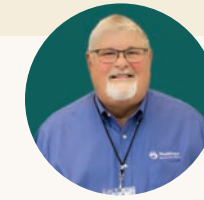


Why Does This Matter?

Every course taught, every pastor trained, and every local church strengthened is shaped by the quality of the materials placed in the hands of instructors and students. WHMI remains committed to this labor, believing that careful theological education is one of the most enduring investments we can make in the life and health of the global church. As we look ahead, please be mindful that our goal is not simply to produce more content, but to continue refining and translating curriculum that serves pastors faithfully, honors Scripture, and supports the long-term work of gospel ministry in the contexts where God has placed His church. This work is exceedingly great, and we cannot do it without your support.

WHMI Global Reach:

PARTNERING WITH WHMI TRAINED PASTORS AND LEADERS, HELPING THEM AND THEIR CHURCHES ENGAGE IN COMMUNITY TRANSFORMATION.



DWIGHT DAVIS
V.P., DIRECTOR, WHMI GLOBAL REACH

Because of your faithful prayers and generous support, 2025 has been a year of powerful gospel-centered impact through WHMI Global Reach. Across Africa, the Caribbean Basin, and Asia, your partnership has met urgent physical needs while opening doors for eternal hope through Jesus Christ. Every project you see here represents both immediate relief and long-term transformation through local leadership and gospel partnership. We invite you to continue walking with us as we expand sustainable ministry, develop national leaders, and proclaim the hope of Christ in hard places. Thank you for standing with us. Together, we are seeing lives changed and communities transformed for today and for eternity.

THE HANDS AND FEET OF WHMI TRAINED PASTORS ENGAGING THEIR COMMUNITIES...

ASIA – COMPASSION IN CRISIS

When Pakistan experienced its worst flooding in 30 years, WHMI Director Troy VanHorn initiated rapid response efforts. WHMI Global Reach provided funds for food, clean water, medical support, hygiene supplies, and emergency assistance. One family shared: "You brought food, and you brought calm to our home." Bushra and Naveed received groceries, water purification tablets, milk, a medical kit, mosquito protection, women's hygiene supplies, and transportation funds for medical care – practical compassion paired with Christ-centered care.



CARIBBEAN BASIN – GOSPEL THROUGH OUTREACH

Through the faithful support of Thaxton Baptist Church, evangelism teams and sports camp outreach were conducted in Belize. Children and families heard the gospel message clearly and boldly. As always, the gospel remains central to everything we do.

UGANDA – BUILDING FOR GROWTH

In partnership with WHMI Director Wes White and faithful churches in the United States – Thaxton Baptist Church and Reformed Community Church – we were able to construct a dormitory and cook house to support growing ministry training efforts. This project directly strengthens discipleship and leadership development for the next generation of gospel workers.

KENYA

CARING FOR THE NEXT GENERATION: Today, World Hope Children's Home in Lemoru provides daily care, safety, and discipleship for 25 precious children. Beyond that, we are also supporting four young adults who were raised in the home and are now attending university, a powerful testimony of lives being changed not just for the moment, but for a lifetime. As part of true community transformation, over the past two years we have also transitioned 12 children into loving homes within the local community, strengthening families and restoring hope where it is needed most.

NOURISHMENT AND SUSTAINABLE LIVELIHOOD: In Lemoru, Kenya, we were able to purchase milk cows for the children's home so that the children could receive fresh milk daily. Testimony: "These children had not had fresh milk on a daily basis and this purchase provided the sustenance that was needed." In addition, we launched a sewing micro-business as a pilot program. This successful initiative now provides income for our national instructors and will continue to expand as we train additional leaders and multiply opportunities.

Investing in the Kingdom

Since the beginning, we have sought to engage Kingdom investors operating from a simple premise: communicate the need and trust God to move the people. This past year, we took several steps to increase engagement and expand our communication to a broader audience. Here are some steps we took in 2025:

1. We adopted a funding frame in which all Board members jointly adopted a funding goal, an actual percentage of the budget to raise by engaging others. While all members give, having members working together on a shared goal has been a blessing.
2. We added an Advisory Council, a group consisting of high-level ambassadors who stay close to the work, receive additional communications, and work to introduce the work to a wider audience.
3. We focused more on small gatherings. While we value large gatherings and will continue to hold them intermittently, we are finding increased value in smaller gatherings, where attendees can hear about the work, ask questions, and where we can build relationships. This highlights our commitment to have a relationship first approach! If you are willing to host a small gathering to help introduce this work, let us know!

We are committed to doing what we say we will do with all our might, relying on God and focusing on faithful obedience, high accountability, clear communication, and a redemptive approach to those we serve.

We believe these are the building blocks of a ministry that people can trust and more importantly, one that honors the Lord.



In 2025 I had the privilege to go to Kenya and answer the call of WHMI to “come and see” what God is doing. I witnessed pastors studying the scripture together for several days. Over those days there was a movement of humility, a willingness to be challenged and a yearning for deep engagement with the text and with one another. The Scripture knowledge and learning in community propelled them into action. They were living in awe of grace and demonstrating a supernatural faith that confronts worldly powers without compromise. I watched them be transformed personally and embody God’s kingdom attributes! WHMI offers a lived theology that made their trust in God not natural but divinely inspired. I have pondered those days since then and yearned for more of God. I know that every stakeholder in the WHMI community is propelled to deepen our own trust in God’s Kingdom work every time we personally experience His grace transforming these pastors. WHMI’s past work of more than a decade is really only beginning and each of us can take hold of that beginning and enter into what is next! So, I am anticipating more in 2026! Thank you for joining us in this work. I pray all of us will find that deeper place of scriptural knowledge and supernatural trust because it is “just the best” there is!

- LAURA SORRELL, WHMI BOARD CHAIR



SCAN HERE TO WATCH LAURA'S VISIT TO KENYA

Sound, biblically based theology underpins the health of the church. Paul devoted much of his ministry to two primary objectives: (1) sharing the Gospel, and (2) instructing churches in God’s design for equipping, living, and functioning as the Body of Christ. While salvation through grace by faith coupled with repentance is where genuine conversion occurs, understanding God’s Word, followed by obedience, is the means through which believers live out their new lives in Christ. It therefore makes sense that without a firm foundation of biblical theology, Christians are “prone to wander” and to fall into deception. Further, Paul provides numerous warnings regarding the dangers of false teaching and its devastating consequences.

I fear that as Christians, we often focus more on merely sharing the Gospel to get to an outcome - conversion of unbelievers - while ignoring the lifelong work of teaching, mentoring, edifying, equipping, and walking alongside those who have been adopted into God’s family. Evangelism is certainly a key priority; and yet, as demonstrated throughout the New Testament, discipleship must follow. I firmly believe that WHMI is well positioned to undertake the challenging work to build up the local church and church leaders to do the work God has ordained. New Christians with limited resources are in desperate need of sound theology and equipping to “stand firm in the faith” and to combat false teaching. As people with not only financial, but more importantly biblically-sound educational resources, we have a calling to build up local churches all over the world - “to every tongue, tribe and nation.” God’s Truth as revealed in His Word is valuable and worth striving for - and it is under constant attack. Let us “not grow weary,” but as Jude passionately exhorts us, let’s “earnestly contend [intensely struggle; aggressively fight] for the faith”. I’m grateful for WHMI and for the opportunity to serve alongside faithful laborers for the Gospel of Jesus Christ. - AUSTIN AND LAUREN HARBOUR, WHMI ADVISORY COUNCIL



WHMI Financials 2021-2025

	2021 FY	2022 FY	2023 FY	2024 FY	2025 FY	2026 FY
	2021 AUDITED	2022 AUDITED	2023 AUDITED	2024 AUDIT PENDING	2025 AUDIT PENDING	2026 PROJECTIONS
TOTAL INCOME	\$1,333,188	\$1,439,094	\$1,619,077	\$1,640,754	\$2,219,271	\$2,492,200
APPROVED BUDGET	\$941,721	\$1,357,109	\$1,631,388	\$2,256,570	\$2,513,600	\$2,492,200
TOTAL EXPENSES	\$872,268	\$1,240,662	\$1,480,148	\$1,919,354	\$2,087,077	\$2,492,200
NUMBER OF STUDENTS TAUGHT (STUDENTS+GRADUATES)	4,996	6,804	8,246	9,684	12,575	15,700
COURSES TAUGHT PER YEAR	248	454	756	976	1,468	1,762
COST PER STUDENT PER COURSE (2023-2025: 6 COURSES PER YEAR)	\$44	\$36	\$30	\$33	\$28	\$26

1. THE FINANCIAL SUMMARY ABOVE IS PREPARED ON A CASH BASIS. INCOME INCLUDES 1) UNRESTRICTED INCOME AND 2) TIME OR GEOGRAPHICALLY RESTRICTED INCOME TO FUND THE BUDGET.
2. ACTUAL EXPENSES HAVE BEEN LESS THAN BUDGET EACH YEAR. COST SAVING MEASURES IN FY 2024 AND 2025 FURTHER REDUCED ACTUAL EXPENSES VERSUS BUDGET.
3. BUDGETS FOR FY 2024 - 2026 REPRESENT STRUCTURAL INCREASES FOR FUTURE SCALING.

What do these numbers tell us?

As we look at the finances from the last 5 years, we continue to learn how this model performs. Here are a few things we see:

- 1) 2025 was important as a catch-up year. Since the pandemic, our growth has been nothing short of amazing. Frankly, it has been a challenge to see growth in funding at a rate comparable to the growth of the work. As you can see from the chart above, we made great progress in closing that gap.
- 2) Each year, we are able to do more with the resources God provides. Over the last five years, we have seen significant increases in numbers of students, graduates, locations, nations served, and courses taught. Meanwhile, our cost to deliver is falling, creating even more value. Comparing our average costs from 2021 to 2025 confirms this.
 - a. Cost to deliver one course to one student: from \$43.68 (2021) to \$27.66 (2025)
 - b. Cost to graduate a student (all 16 courses): from \$698 (2021) to \$443 (2025)
 - c. Cost to deliver a course to one gathering of students: from \$3,517 (2021) to \$1,422 (2025)
- 3) The growing value of investing in this work makes it attractive. But more than that, the rising capacity and falling costs demonstrate this ministry’s inherent ability to scale. This gives us hope. By God’s grace we have a viable path to reach millions of pastors and church leaders over time.
- 4) The need to grow our funding is not going away. Our requests to open more locations are increasing every day. This is often how it goes when a scalable solution surfaces to address a widespread problem. The more people embrace this approach, the more other people want it.
- 5) With all that is changing, we have remained committed to both quantity (how many we can train) and to quality (how well we can train). We are seeing both costs and capacity moving in the right direction—all while improving quality of instruction, increasing quality controls, and adding more robust evaluations of our impact on these students.



WHMI FINANCIALS SCAN HERE

Board of Directors

- LARA SORRELL
CHAIR
- CHRIS DEPUE
BOARD MEMBER
- LADONNA LESIKAR
DEVELOPMENT CHAIR
- GREG SANGALIS
HR CHAIR
- LARRY KERR JR.
VICE CHAIR
- DREW HOWARD
FINANCE CHAIR
- BRIAN MIZELL
BOARD MEMBER
- Emericus Board Members
- MARK WOOLFOLK
SECRETARY
- GRIFF JONES
BOARD MEMBER
- JEFF MONTGOMERY
BOARD MEMBER
- CAROLYN DALTON
- GERALD CRUMP
BOARD MEMBER
- DAVID LAVINE
BOARD MEMBER
- TOM OWENS
BOARD MEMBER
- RUSSELL GINN

Advisory Council

“The primary role of the WHMI Advisory Council is to provide positive and prayerful advocacy, mission and financial support for WHMI.”

- LARRY KERR, VICE CHAIR

Please welcome our new Advisory Council members:

- KYLE CORDELL
- JONATHAN SANDERS
- JORDAN EIBEN
- DAVID SAXE
- AUSTIN HARBOUR
- KATHERINE SORRELL
- JORDAN LENDERMAN

Board of Directors

UNDER THE PROTECTION AND DIRECTION OF WHMI'S BOARD OF DIRECTORS, WHMI USES A TEAM APPROACH TO ENSURE THAT THE MINISTRY STAYS ON TASK AND ACCOMPLISHES THE MISSION TO WHICH IT IS CALLED. UNDER THE LEADERSHIP OF THE CEO, OUR STAFF IS ORGANIZED INTO THREE TEAMS: FINANCE AND OPERATIONS, WHMI'S BIBLE INSTITUTE, AND WHMI GLOBAL REACH.

President & CEO

THE CEO, UNDER THE AUTHORITY OF THE BOARD, WORKS TO IMPLEMENT THE MISSION OF WHMI, COORDINATING THESE THREE TEAMS AND WORKING WITH THE DEVELOPMENT AND COMMUNICATIONS TEAM TO ENSURE WE ALL ARE GOING IN THE RIGHT DIRECTION TOGETHER.

Finance & Operations

Finance and Operations ensures that we maintain integrity in every transaction, that systems needed are maintained and ready to go, and that all logistical support from getting teachers and teams to/from the field are done with excellence.

WHMI Bible Institute

WHMI's Bible Institute is our largest ministry team, working to expand access to theological education on a global scale. Under the oversight of our International Director, Directors work to implement our strategic approach through groups of local leaders, Regional Coordinators, Associate Directors, and national and U.S. instructors. Additionally, the Provost and the Director of Curriculum help ensure quality in all we do.

WHMI Global Reach

WHMI Global Reach collaborates with our Bible Institute Directors around the world to explore ways to help increase Great Commission engagement with the same pastors and leaders we have trained. They vet proposed projects before approval, work to seek designated funding for approved projects, and recruit teams (individuals and churches) to engage with our partners on the ground.

Leadership Team

STUART SHEEHAN
PRESIDENT & CEO

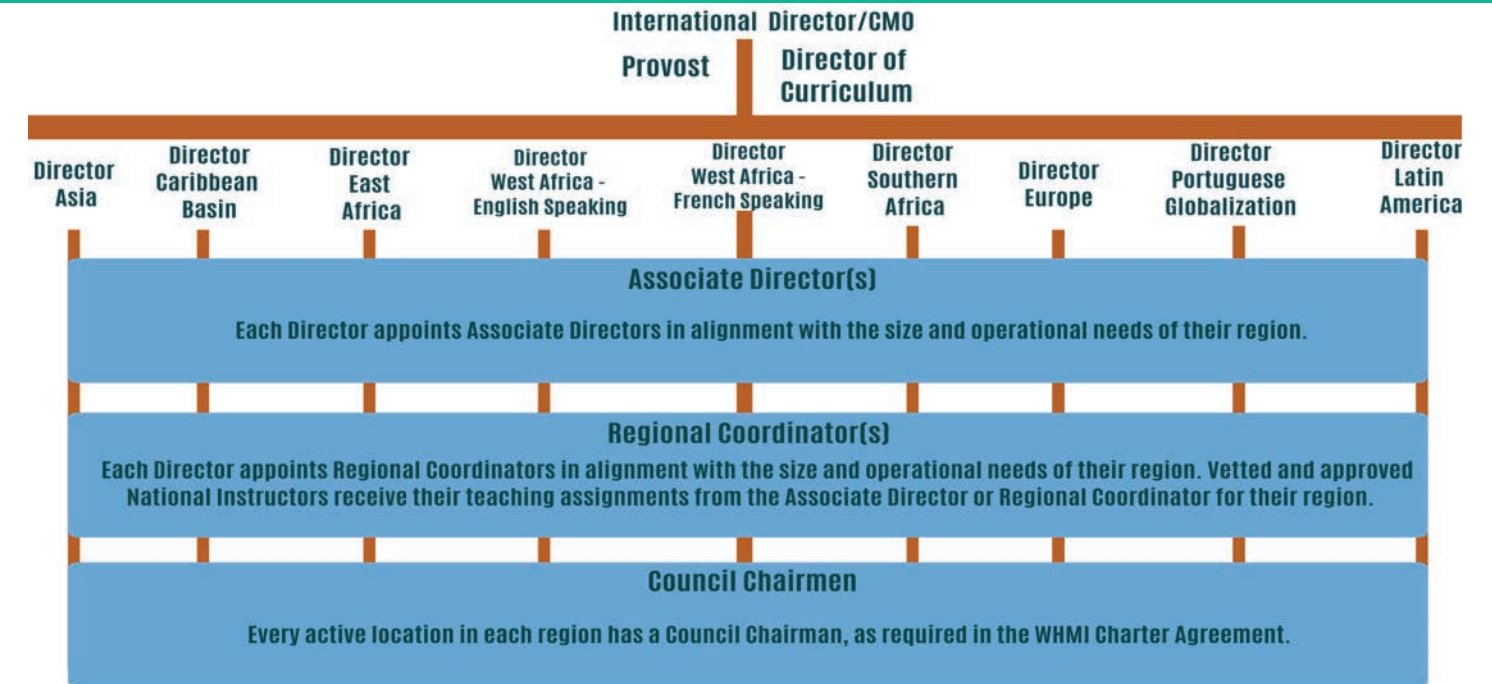
BILLY ROSS
CMO & INTERNATIONAL DIRECTOR,
WHMI BIBLE INSTITUTE

GARY BARKER
V.P. & CFO

DWIGHT DAVIS
V.P. & DIRECTOR,
WHMI GLOBAL REACH

WHMI Bible Institute Structure

THE OVERALL STRATEGIC APPROACH AND MISSIONAL DIRECTION OF THE WHMI BIBLE INSTITUTE ARE UNDER THE GUIDANCE OF OUR PRESIDENT/CEO AND THE INTERNATIONAL DIRECTOR/CMO. THE INTERNATIONAL DIRECTOR/CMO SERVES AS THE CHIEF OF OPERATIONS FOR ALL OVERSEAS WORK. TOGETHER, THE CEO AND CMO, ALONG WITH OTHER US-BASED STAFF, PROVIDE STRONG, INNOVATIVE, AND COLLABORATIVE LEADERSHIP FOR THE ORGANIZATION.



About our Leaders

Our Directors often share short testimonies as to the effectiveness of the Bible Institute or the transformative power of the training pastors and church leaders receive. This testimony, from our Director for East Africa, is a little different as it provides a picture of how essential our national leaders are to the growth of the WHMI Bible Institute and how each leader displays strong character and a commitment to carrying the mission forward. (Each of our other 8 Directors would testify to the same dedication and integrity in their regions.)

From West White: There are currently 167 active locations in East Africa, led by 4 Associate Directors, 10 Regional Coordinators, and 87 vetted national instructors. It has been my pleasure to interact with these brothers through times of fellowship, instructor training, and regular communication. They are men of integrity, commitment, and spiritual depth.

Our National Instructors serve our ministry sacrificially. These instructors travel throughout their country, being separated from their families and jobs. They travel great distances to get to their teaching locations. Sometimes there is a hostel to stay in, other times they stay with the pastor or a leader in the church. They eat what is set before them, rise early, teach all day, and rise again the next day to do it all again for three days at a time. They will do this multiple times each month. In so many ways, these brothers remind me of the New Testament ministry pattern. These brothers are faithful to submit Instructor Field Reports and encourage the local council chairman to fill out the Council Report Evaluation.

All Regional Coordinators are instructors. These brothers establish new locations, work with local chairmen to plan course class schedules, and serve as a liaison between the local BI location and WHBI. They keep the individual locations on schedule, ensuring that the location continues to thrive. They submit requests to schedule classes to their Associate Director.

The Associate Director is the administrative and spiritual leader of the Regional Coordinators for his area. He encourages, manages, and casts vision for his given area. He manages council and instructor issues, manages the forms for graduation and the submission of new location requests. These brothers work directly with me, and we communicate on a regular basis. They oversee all national instructors in their area, assign teaching assignments, manage stipends, and teaching reimbursements. Any new policy, form, or vision is communicated by them to the brothers on the front lines. They are faithful and spiritually mature, committed to their country of residence and other countries assigned to them. They do not complain, although many have been quite ill with malaria and other diseases, some requiring surgical intervention. Most of them have lost close family members in the last 12 months. They have suffered and sacrificed. Through these brothers, Christ is glorified, pastors are trained, communities are transformed.

2026 Vision and Prayers – from the Regional Leaders

TROY VANHORN

WHMI DIRECTOR OF ASIA

Prayer: In 2026, we are praying to see a reproducing WHMI Bible Institute in every Asian nation by 2035 with faithful, sacrificial national leaders steering the movement.

Vision: In 2026, the vision is that God will provide the leaders and pathways for the next 4 nations in 2026.

AUBREY RALPH

WHMI DIRECTOR OF THE CARIBBEAN BASIN

Prayer: In 2026, we are praying for effective replication in Trinidad and Suriname as God uses Bickram Singh and Ralph Hardowar to lead and equip teams of national instructors. Also, praying for the protection and empowerment for Obed Michel, Regional Coordinator for Haiti, as he teaches make-up classes in dangerous and unstable regions. We are praying for the students' safety as they gather amid gang violence, and for understanding and obedience to God's Word.

Vision: In 2026, the vision is to train and deploy an army of national instructors who will strengthen the integrity, effectiveness, and long-term sustainability of WHMI Bible Institute training across the Caribbean Basin.

DUSTIN MEYERS

WHMI DIRECTOR OF PORTUGUESE GLOBALIZATION

Prayer: In 2026, we are praying that our Portuguese-speaking African locations would be self-sustaining within the year.

Vision: In 2026, the vision is that even the most remote and underserved pastors will be within 2 days travel of theological education.

JUSTO ROBINSON

WHMI DIRECTOR OF LATIN AMERICA

Prayer: In 2026, we are praying for the new WHMI Bible Institutes that will be inaugurated in Texas and Colombia and for the recent graduates who will replicate what they learn in their native countries. And please pray for our Regional Coordinator of Honduras, Jorge Duran.

Vision: In 2026, the vision is that even the most remote and underserved pastors will be within 2 days travel of theological education.

JOHN OLAGBEMI

WHMI DIRECTOR OF ANGLOPHONE WEST AFRICA

Prayer: In 2026, we are praying for an increase in dedicated national instructors for expansion throughout West Africa and to have a breakthrough to start a WHMI Bible Institute in the Muslim dominated country of Gambia.

Vision: In 2026, the vision is to graduate more certified students of the WHMI Bible Institute in the Anglophone West Africa, who will replicate what they learn in their native countries.

WHMI GLOBAL REACH

Prayer: In 2026, we are praying that God would stir the hearts of churches and individuals to become partners with WHMI Global Reach and send teams, resources, and encouragement to **trained pastors and leaders, helping them and their churches engage in community transformation.**

Vision: In 2026, the vision is to send teams to assess needs, build relationships, and plan strategic ministry initiatives.

CASEY HOUGH

WHMI DIRECTOR OF EUROPE

Prayer: In 2026, we are praying that we will see other countries, especially in Eastern Europe open new locations of WHMI Bible Institute.

Vision: In 2026, the vision is that even though there is so much work to be done, our God is great. He can open doors that seem closed and provide the resources that are needed to train pastors in Europe.

MICHAEL WILLIAMS

WHMI DIRECTOR OF SOUTHERN AFRICA

Prayer: In 2026, we are praying for the provision of additional instructors to open new locations of WHMI Bible Institute in places where the students are urgently waiting to be trained.

Vision: In 2026, the vision and hope is that a variety of instructors from across the nations are impacting the advancement of sound doctrine in communities across Southern Africa.

CRAIG KENDRICK

WHMI DIRECTOR OF FRANCOPHONE WEST AFRICA

Prayer: In 2026, we are praying that we would be steadfast, immovable, always abounding in the work of the Lord, knowing that our labor is not in vain in the Lord. (1 Corinthians 15:58)

Vision: In 2026, the vision is to make the WHMI Bible Institute's free, systematic, and quality theological education accessible to all underserved church leaders in all 16 countries in our region. We are hoping to graduate more certified students of the WHMI Bible Institute, who will replicate what they learn in their native countries.

WES WHITE

WHMI DIRECTOR OF EAST AFRICA

Prayer: In 2026, we are praying that God would place His hand of protection upon our national instructors and leaders, that the areas of spiritual darkness will be flooded with the brilliance of the Gospel, for rapid evangelism and effective pastor training, and that the deceptive powers of darkness would be silenced.

Vision: In 2026, the vision is that I will faithfully serve and spiritually care for the leadership team of the East Africa WHMI Bible Institute.

Key Takeaways from 2025:

At the end of each year we stop and reflect, looking at both successes and the setbacks. We believe God can teach us from both! Below is a sample of things we learned in 2025. We continue to mature in our ability to do what we do with greater effectiveness, efficiency, and quality.

NAVIGATING DEPTH AND BREADTH

Our growth this year was extraordinary in the number of courses taught, number of graduates, and number of locations. However, we did not open in as many new countries as we anticipated. As we analyze this, we can see that our approach (training, and discipling pastors to train and disciple others) naturally drives depth in geographic regions. When we map our locations, it is clear we are creating dense networks in regions, but it also means we are not expanding to new nations as quickly as we had hoped. We are however seeing something we thought would come later—significant localized access for pastors and ministry leaders. This leaves us with a nagging question: what tactics should we consider so we can create similar nationally led streams of multiplying theological education in new nations around the world?

GROWING OUR UNDERSTANDING OF PARTNERSHIPS

This past year we continued to focus on building partnerships with already existing ministries. Historically, we believe that Christian ministries have tended to work in silos, either unaware or uninterested in vital partnerships with others. We are encouraged to see a growing interest in this among other ministries. In one nation, we are joining a like-minded ministry that uses their engineering expertise to provide long-term solutions to broken well pumps. They do so as a path to evangelism. Their work surfaces a need for pastors who need training, and as we train more pastors in that nation, this partner-ministry will have more opportunities to expand their work. You can imagine how this acts as a multiplier - a true win-win. This approach requires relationships, strategic planning, and the right partners. There is much to pray for and much more work to do to establish similar types of partnerships.

THE NEED FOR NATIONAL OFFICES

The increased engagement of nationals to build dense networks of training in their regions has meant a large workload for U.S. based staff. As multiplication occurs, 10s of thousands of data bits flow back to the U.S. for processing. This assures quality control. However, we are seeing ways to simplify the process by enlisting locals in regional offices to process some of this data locally then to send along the required data to us. This means that follow-up can happen much closer to where the work is taking place. This past year we opened regional offices in West Africa and East Africa. We are already seeing the benefits of this structural change and look forward to seeing such regional offices around the world as God expands our footprint.

THE NEED FOR NEW INITIATIVES

While we are overjoyed with all God is doing, we can now see that growth in some countries and some regions of the world will require different tactics. Nearly all our global growth to this point has been organic: referrals, recommendations, and expansion through replication. There are, however, still areas where the light of theological education needs to shine. These areas also need trained pastors. We are now exploring how we can navigate future growth to spur expansion into new unserved areas of the world.

LEARNING TO COMMUNICATE MORE EFFECTIVELY

These are two ways we are working to communicate more effectively:

1) The downstream effects of not having trained leaders. This remains challenging to adequately communicate. False teaching is a real and present danger. WHMI must continue to advocate on behalf of the millions of church leaders who are not adequately trained to combat false teaching and disciple their congregations toward spiritual health. This alarm needs to be effectively and consistently sounded.

2) The incredible value inherent in this model. We are often asked how we can do so much ministry with such a relatively small budget. As you have seen in this report, much of the work is being done by nationals, who taught 91% of the courses in 2025. This means that for every dollar given to this work, there is enormous sweat equity invested by nationals around the world. While this shows in our annual audit as donated services, we need to do a better job describing the value proposition inherent to this approach.

Change is the status quo. Because God continues to bless this work, we continue to grow and change. This means new processes, tactics, team members, cultural challenges, etc. It has been a wild ride these last several years. But through it all, we continue to learn that stability in this ministry does not come from our work or from within ourselves. It comes when we work together to keep our eyes fixed on Jesus. Indeed, we are nothing without Him and with Him we are **better together!**

Reaching (more of) the World

THE CHALLENGE:

In its first 15 years of operation, WHMI's Bible Institute has seen God do an amazing work. We started with four test locations and now we have 368 locations with another 55 in trial stage. These are spread across almost 60 nations. Much of this growth has happened organically and we celebrate that! Still, there are millions of leaders that lack access to basic, essential theological education. Based on current rates of expansion, it could take more than 50 years to even get close to them. For this reason, we have entered a time of prayer, exploration, discovery, consultation, and God willing, development of possible next steps.

Africa is now the global center of Christianity. More Christians live on the continent of Africa than any other continent.

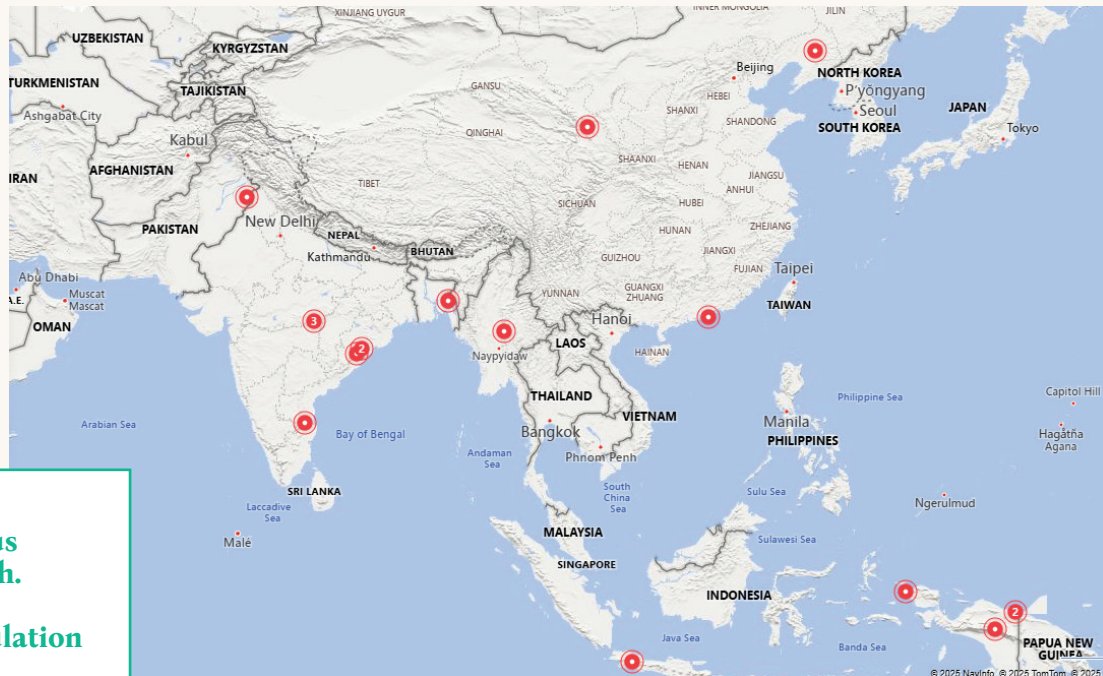
THE FOCUS:

Developing new approaches requires strategies that are built for specific contexts. If God so leads, we intend to develop more dense networks across Sub-Saharan Africa and seek to open new multiplying streams across Asia. The importance of increasing access to theological education across Africa is undeniable—Africa is now the global center of Christianity. More Christians live on the continent of Africa than any other continent. We have made great progress there, but we still have far to go—and we believe sooner is better than later. Asia is equally important. Nearly 60% of the world's total population lives in this part of the world. And the gospel is growing there as well. While we have excellent work in Asia, rapid expansion is inhibited by vast distances, oceans, and highly competitive, if not combative, cultures. You can see in the image below, seeing the work spread from country to country (as it has in Africa) is not likely. Therefore, we are focusing our planning efforts on developing strategies that speed expansion in both Asia and Africa. We are not everywhere we hope to be yet, but with the Lord's help we hope to get there soon!

OUR ASK OF YOU:

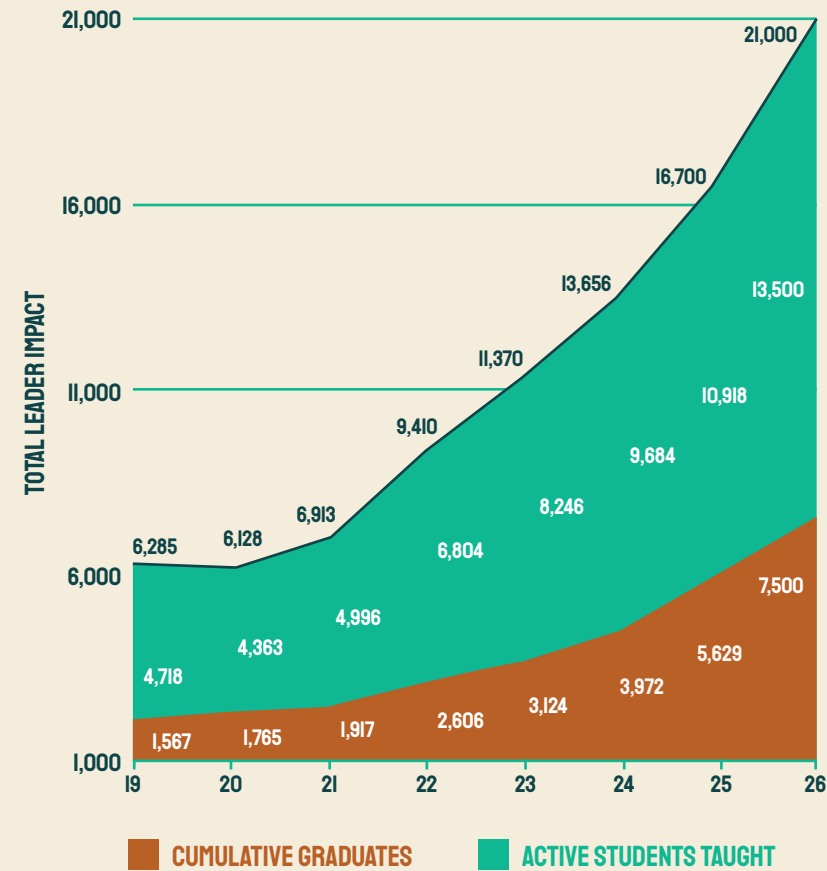
We need God's wisdom and direction, and to that end we need your prayers. Please pray that we will never grow for growth's sake—but that we are willing to keep changing and adjusting to increase our ability to serve more of the Kingdom. If the Lord chooses to govern our pace of growth, pray we will have patience. If He asks to grow beyond what we can imagine, pray we will have courage to risk whatever it takes. We will trust that if He does that, He will send us nationals in places we do not yet know, and He will bring investors that we have not yet met. In the end, the best way for us to expand will be the way God leads, no matter the obstacles or challenges. For this reason, we are asking you to pray!

Asia is the largest and most populous continent on Earth. Nearly 60% of the world's total population lives in Asia.

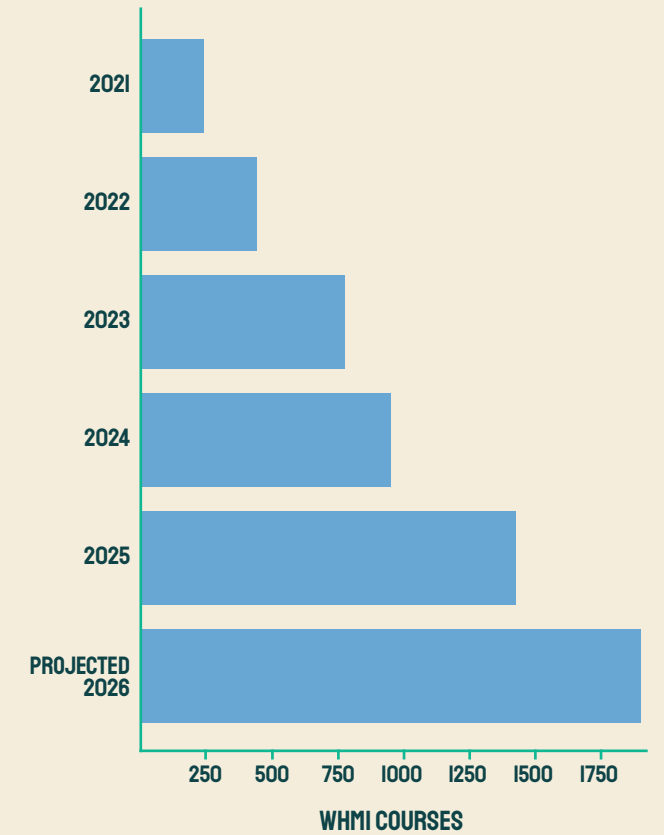


Note: While we give thanks for locations across Asia (shown in red) vast distances, oceans, and cultures mean there is much more to do.

Total Impact



Courses Taught



THANK YOU!

We could never have come this far without partners like you. We hope you see that God is using your investment to produce beautiful and lasting fruit.

GLORY TO GOD!

We are more aware than ever that none of these outcomes are possible apart from the gracious hand of the Lord. Our mutual investments are wood hay and stubble apart from the touch of God to make them eternally effective. We give Him glory for all the blessings of 2025.

IT WORKS!

We have long passed proof of concept. This report undeniably demonstrates that impact is rising and cost to deliver services is going down. WHMI is a high-impact, high return Kingdom investment.

WE NEED YOU!

Beyond all you have already done, we ask you to stay with us, that you pray diligently, and help us introduce this amazing work to others. Together, through faith, commitment, and shared purpose, we can carry this mission forward and reach every life we are called to serve. We still have a long way to go and we know ... **WE ARE BETTER TOGETHER!**



VISION

To see transformed communities, served by healthy churches, led by trained pastors.

WHMI BIBLE INSTITUTE MISSION

To make theological education globally accessible so churches can be healthy and communities can be transformed.

WHMI GLOBAL REACH MISSION

To partner with WHMI trained pastors and leaders, helping them and their churches engage in community transformation.



17111 Old Louetta Rd, Houston TX, 77070, United States of America

WHMI.org