



Introduction to SRI

peter.marcotullio@sri.com

2026

©2026 SRI INTERNATIONAL. ALL RIGHTS RESERVED. PROPRIETARY.



AI - Tell me about SRI?

 Claude

 ChatGPT



SRI enjoys a very strong and respected reputation:

- **Highly regarded as a cradle of innovation** – it's seen as one of the most consequential research institutions in Silicon Valley history, alongside Xerox PARC and Bell Labs. Many of the technologies we use daily trace back to SRI.
- **Known for spinning out companies** – SRI has a strong track record of commercializing research through spin-offs and licensing, which the tech community respects.
- **Deep government ties** – A significant portion of SRI's work is defense and intelligence-related, which is well-known and generally accepted in the tech world, though it gives SRI a more "institutional" feel compared to pure private-sector labs.

Overall, SRI is viewed as **one of the most important and prolific R&D institutions in tech history** – a place where foundational technologies were born, often decades before they became mainstream.

PARC Forum: Nobel laureate John M. Martinis discusses the quantum frontier

NEW DATE: JUNE 3, 2026
5:00 PM PT | SRI'S PARC CAMPUS



Independent. Nonprofit. R&D.



80

Years of
Innovation

1100+

Staff

400+

R&D projects
annually

50+

Spinouts
since 2020

\$400M

Average
annual funding

1

Nobel Prize

6

Turing
Awards

9

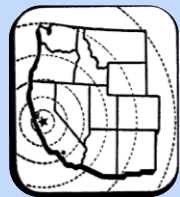
IEEE
Milestones

1

Oscar

9

Emmy
Awards



Founded in 1946 by
Stanford University, became
independent in 1970.



Founded in 1942, Sarnoff
Corporation, formerly RCA
Labs, acquired by SRI in 1987.

parc®

Founded in 1970 by Xerox, Palo
Alto Research Center (PARC)
acquired by SRI in 2023.

Proven expertise across Deep-Tech domains



Innovation Policy & Strategy

Quantum

Advanced Computing

AI & Autonomous Systems

Health & Biosciences

Speech, Video, & Imaging

Education & Life-long Learning

Novel Chemistry & Synthesis

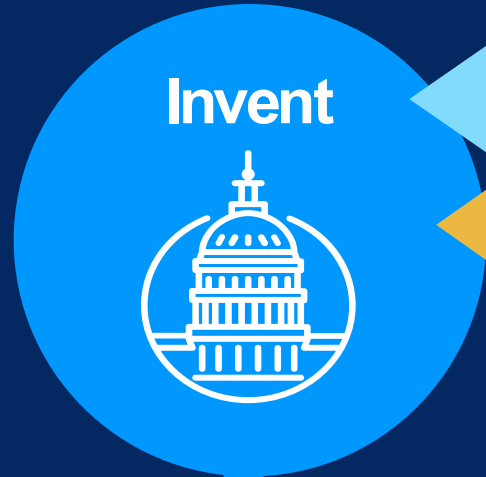
Microelectronics & Optoelectronics

ISR, PNT, & Radar

From Basic Research to Commercialization



Easy to describe, challenging to do!



Invent



Apply

100+ Industry Projects / year



Transition

25+ Licenses & 5+ Startups/ year



INTUITIVE



decoded health

Scotty

se/sm/c

LatentAI



LEOLABS

SRI's Innovation Ecosystem



Academia



Government



Investors



400+ R&D projects
 200+ Academic collaborations
 100+ Small Business partnerships
 75+ Industry projects
 1000+ active patents



Startups



Industry



Foundations





50+ Ventures

\$100B+ Market Cap

4.4x Multiple on Invested Capital (MOIC)

33% Of our companies have had successful exits

ACTIVE

AI & Robotics

accuknox Authenticiti Autonomique Confidential CERBREC

ENCOUNTER AI GoCharlie GUIDE ROBOTICS Gridspace Kasisto

kuato studios kurve LatentAI ninjatech.ai OV Loop PASSIO

reSCAN EntropyRobotics se/sm/c VITRINA WINGSURE

Life Sciences

BEACON DX HEALTH decoded health

MD MEDICAL DEVICE COMPANY intuity MEDICAL curie

Valence VIBRATIONS vaalia HEALTH

Space & Other

Averatek climetric

LEOLABS MEMBRAVO

xona space systems NUVIEW

zephr.xyz

EXITS

NUANCE drishti Siri DESTI Scotty PREVASID

IPO (NASDAQ) Acquired by Apple Acquired by Apple Acquired by Here Acquired by DoorDash

redwood robotic Summly pulse OTO tempo

Acquired by Google Acquired by Yahoo Acquired by Mozilla Acquired by Unity Acquired by Salesforce

Tauk SOCIALKINETICS

Acquired by Moloco Acquired by Redbrick Health

ORCHID CELLMARK DNA testing trusted worldwide. IPO (NASDAQ)

INTUITIVE SURGICAL IPO (NASDAQ)

LIGHTSCAPE materials, inc. Acquired by Dow

Lisa Health Acquired

Meta Acquired by Chan Zuckerberg

ARTIFICIAL MUSCLE INCORPORATED Acquired by Bayer Material Sciences

VERB SURGICAL Acquired by Johnson & Johnson

TECHNOLOGY TRENDS

6 Technologies that will change the world in the next 5 years!

Transformative forces reshaping
how we live, work, and connect

Artificial General Intelligence (AGI)

- AI that plan, execute, and self-correct multi-step tasks without human intervention
- LLM-powered workflows replacing entire job categories across knowledge work
- Multimodal models unifying text, vision, audio, and motion control in single systems
- Estimated 40% of enterprise workflows will include AI agents by 2028

\$4.1T

Projected AI
market value
by 2030



Quantum Breakthroughs

- Error-corrected quantum processors reaching 1,000+ logical qubits commercially
- Pharmaceutical discovery, materials science, and logistics optimized at unprecedented scale
- Post-quantum cryptography mandates driving global security infrastructure overhaul
- Quantum sensors with phenomenal precision and accuracy

1M+

Quantum
operations per
second possible



Precision Medicine & Synthetic Biology

- CRISPR-based gene therapies approved for 50+ conditions by 2028
- AI-designed proteins enabling novel drugs, biofuels, and biodegradable materials
- Continuous health monitoring wearables linked to personalised treatment protocols
- Lab-grown organs moving from experimental to clinical transplant programmes

87%

Reduction in
drug discovery
time with AI



Humanoid Robots Enter the Workforce

- General-purpose humanoid robots commercially deployed in warehousing and care
- Dexterous manipulation closing the gap between robotic and human fine-motor skill
- Robot-as-a-service (RaaS) models lowering the barrier for SME adoption
- Collaborative human-robot teams becoming standard in manufacturing by 2029

38M

Humanoid robot
units shipped
by 2035



Green Tech & Energy Transformation

- Solid-state batteries achieving 500 Wh/kg, transforming EVs and grid storage
- AI-optimised smart grids balancing intermittent renewables at continental scale
- Green hydrogen cost parity with fossil fuels reached in key industrial sectors
- Modular nuclear reactors (SMRs) licensed and operational in 15+ countries

90%

Projected renewable share of new capacity



Space Access & Exploitation

- Moving from government-sponsored to private sector
- Falling costs from growth and re-usability significantly increasing access to space
- LEO constellations, such as STARLINK, greatly expand digital access
- Satellite systems increasingly underpin disaster response
- Space manufacturing and digital infrastructure are emerging opportunities

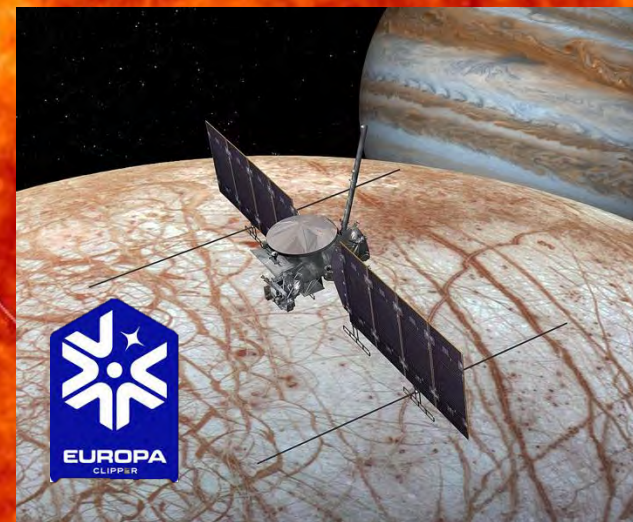
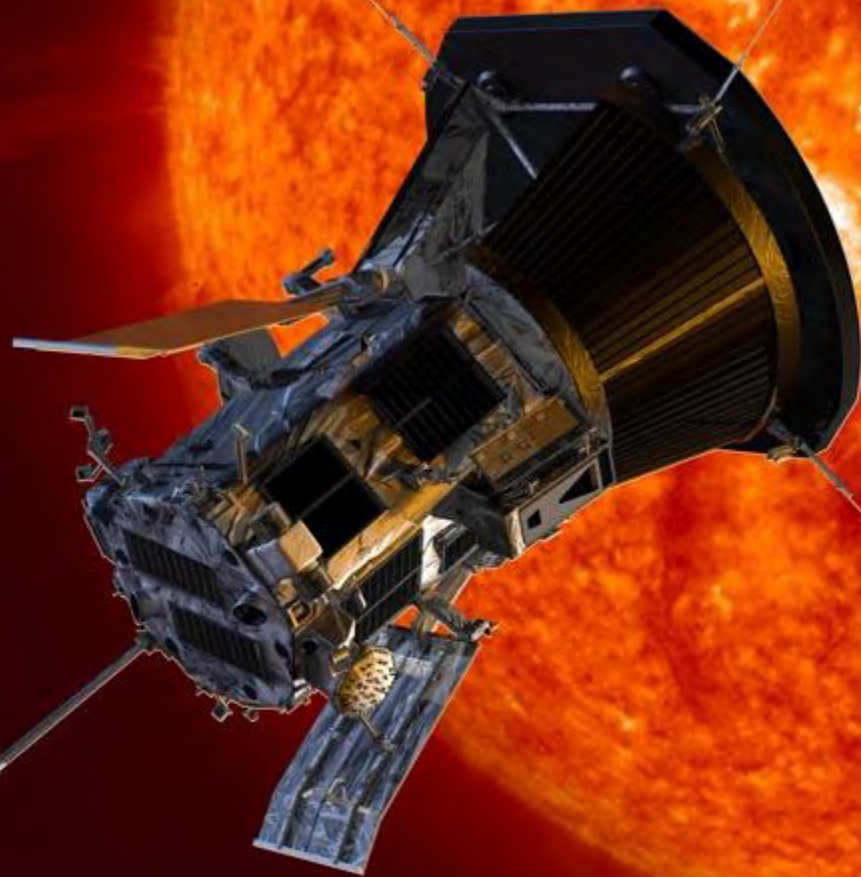
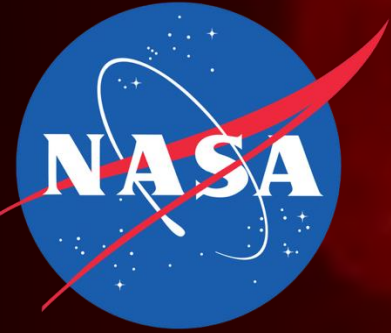
\$2T

Projected
market in 2030

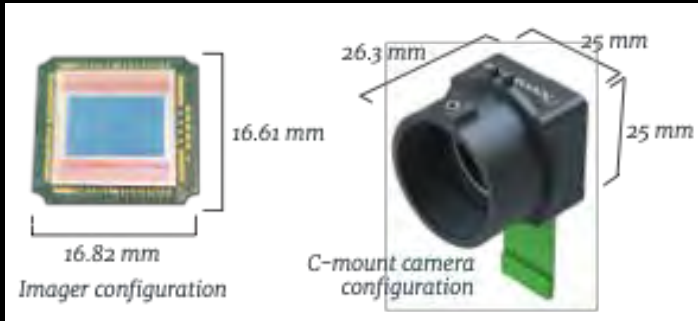


NASA Parker Solar Probe & ESA Solar Orbiter

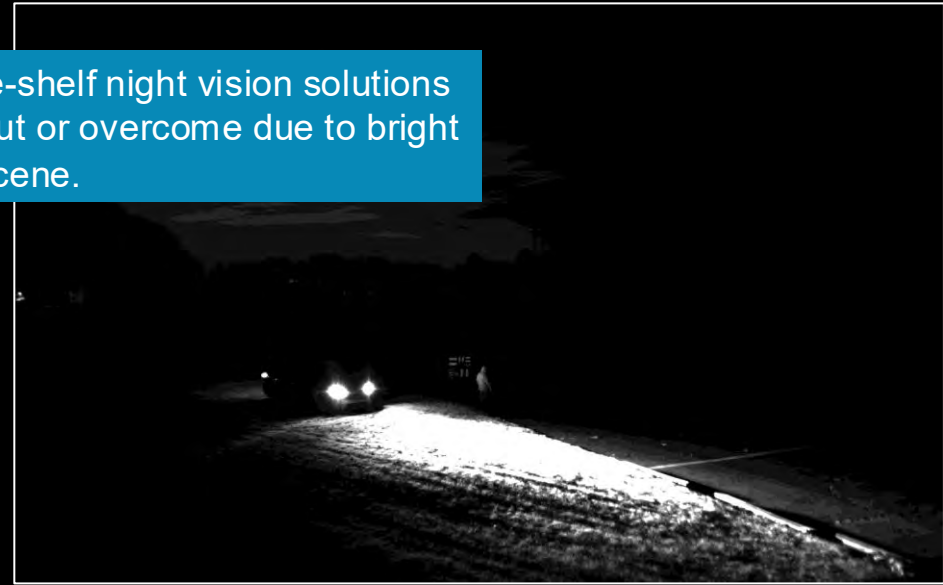
“Touching” the Sun



SRI's Dominite™ Low-light CMOS



Typical off-the-shelf night vision solutions get washed out or overcome due to bright lights in the scene.



DomiNite™ view under zero-moon conditions in High Dynamic Range mode. Details are visible even in the presence of bright lights.

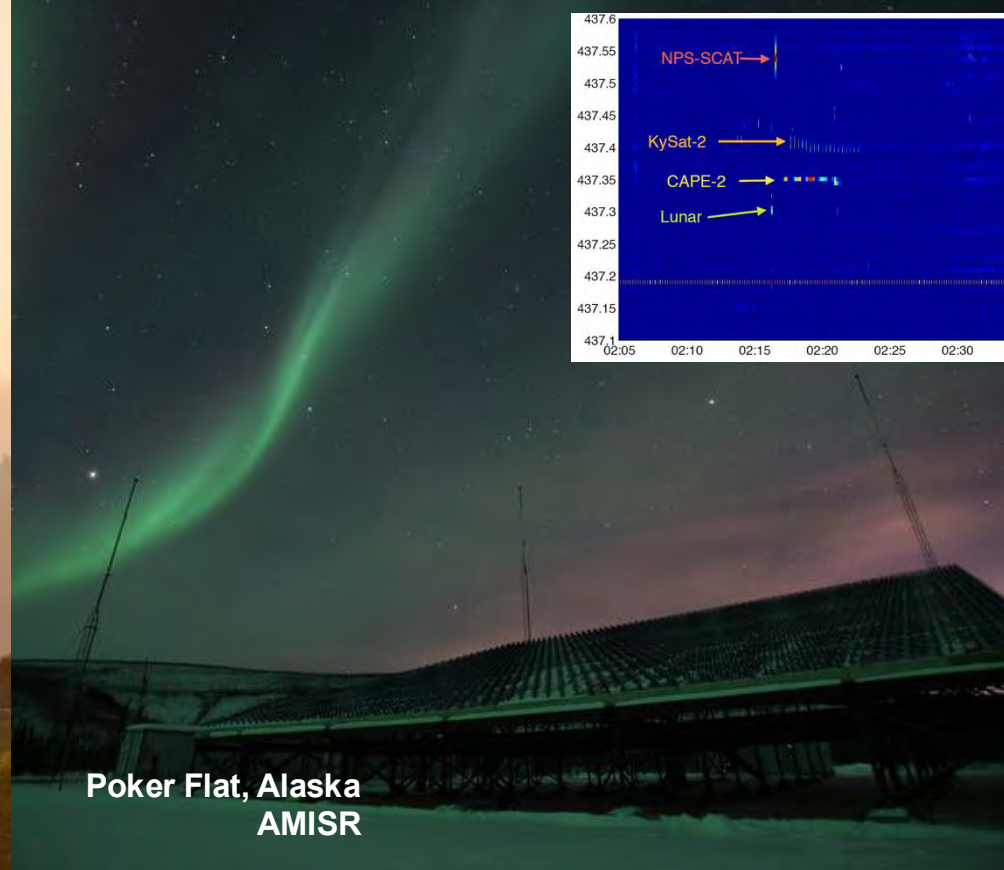


From DOD to Civilian to Dual-Use

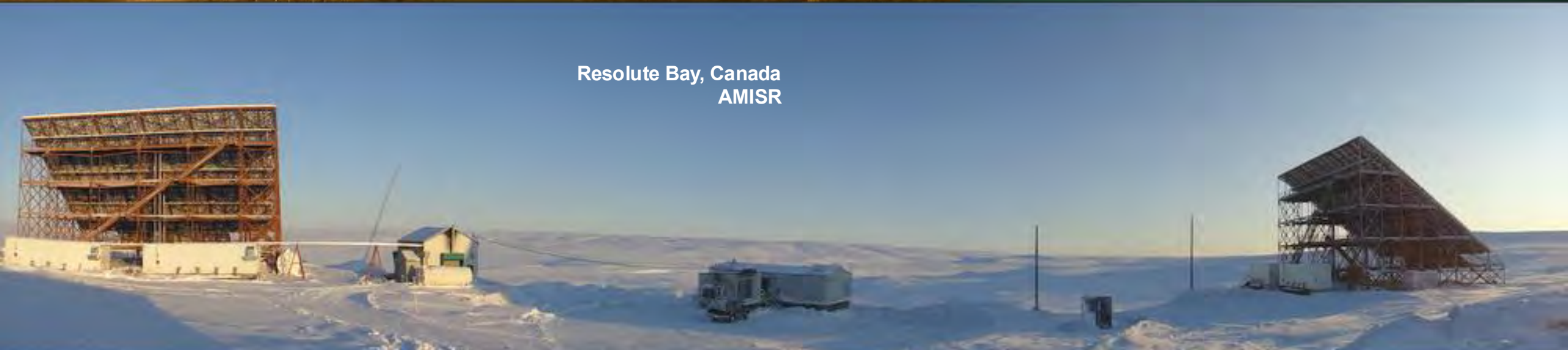
SRI Designs, Builds, and Operates Space Facilities
Around the World



The Dish @ Stanford



Poker Flat, Alaska
AMISR



Resolute Bay, Canada
AMISR

Search

Speed

Debris

Beams

Instruments

Follow Earth

Auto Refresh

Views

Object Type

Perigee

Period

Inclination

Country of Origin

Filters

Perigee

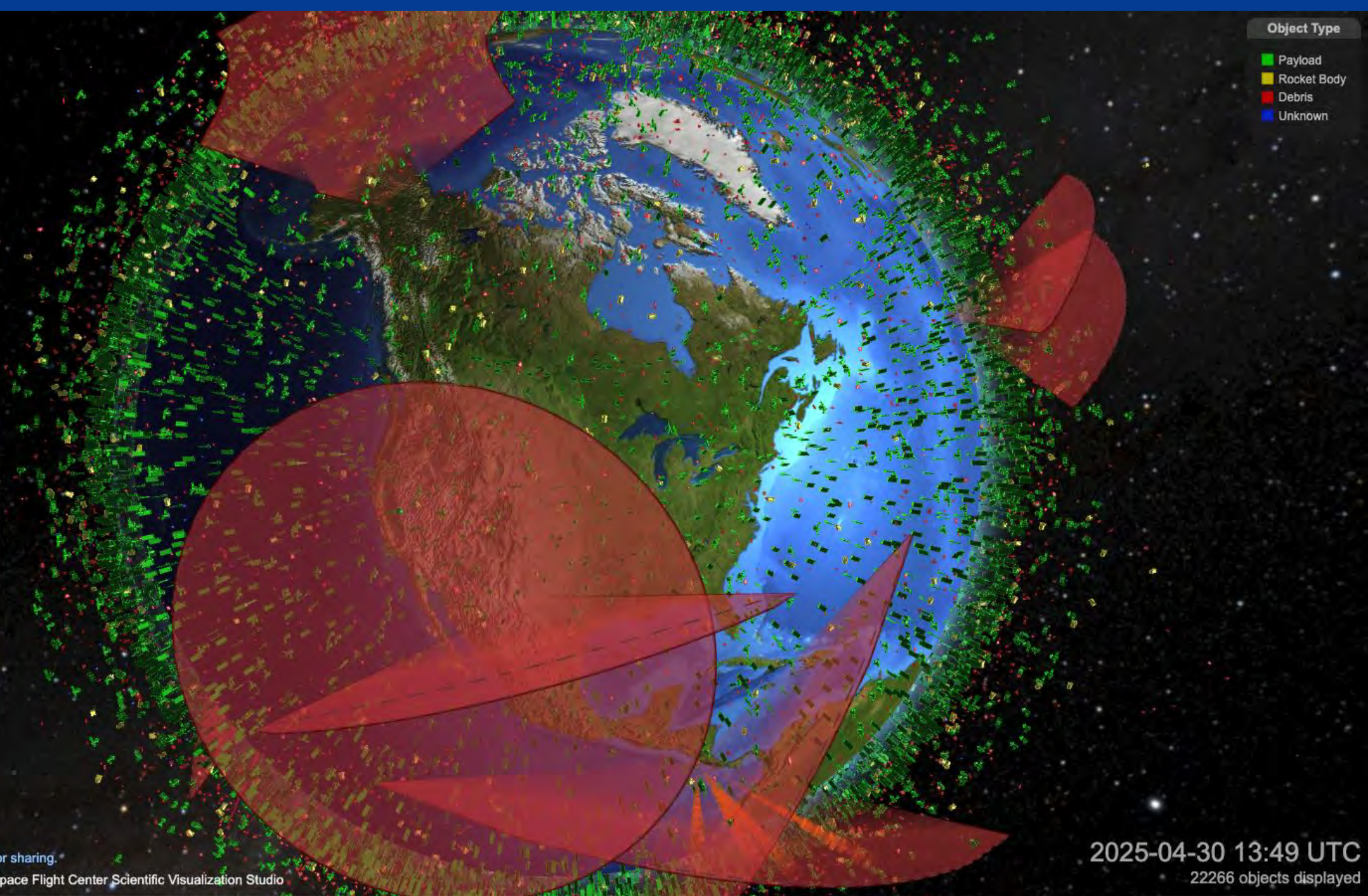
Add Filter

Ground view

Hide Menu

Object Type

- Payload
- Rocket Body
- Debris
- Unknown



⚠ Special events are not shown

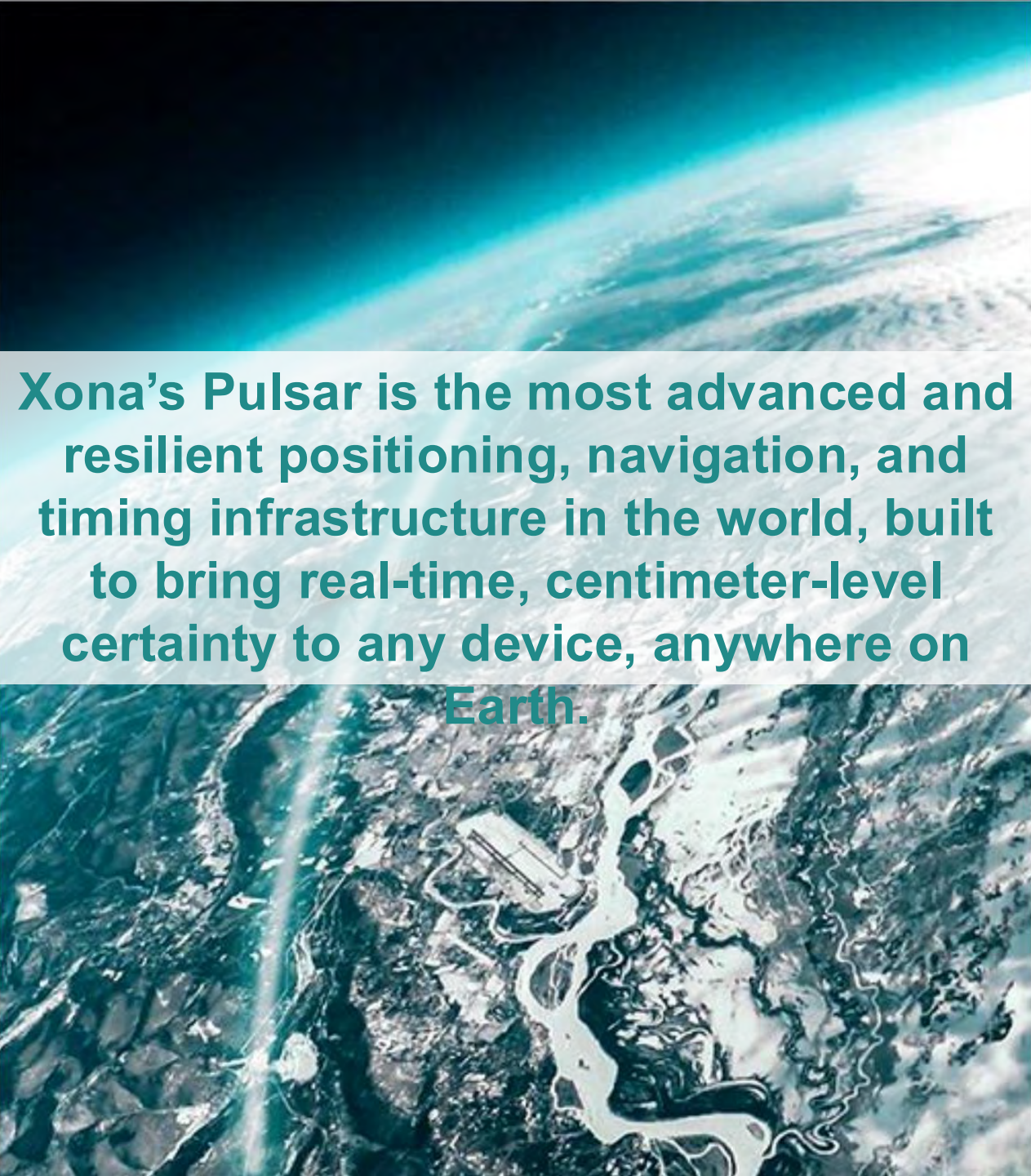
🔗 [Copy link to share](#)



What SpaceX did for Launch, Xona is doing for Navigation.

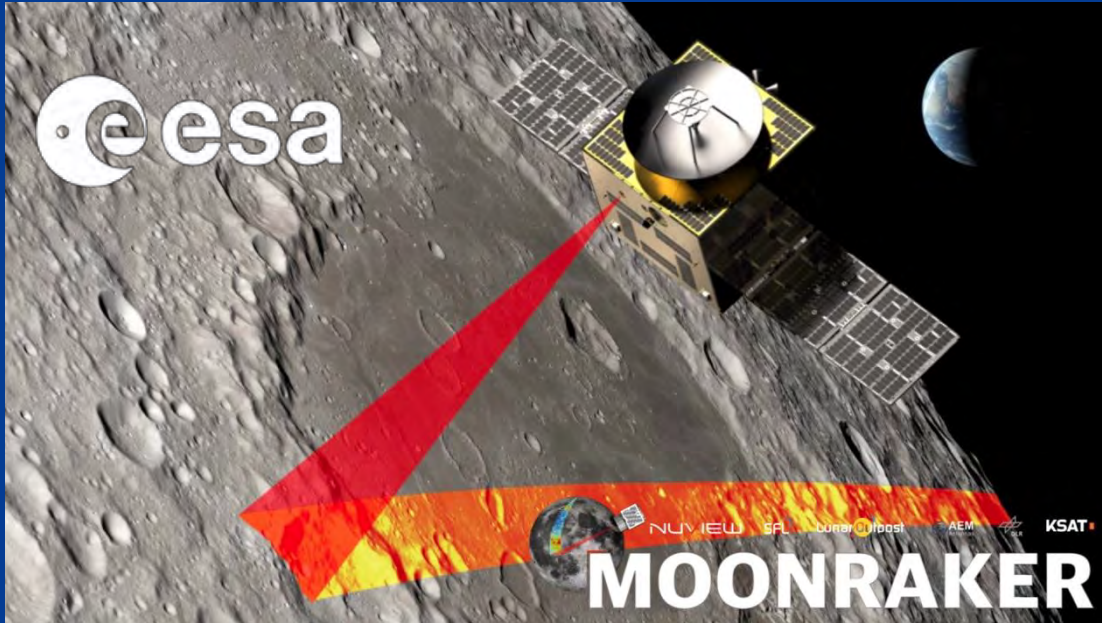
Xona is building the first commercial satellite navigation system designed to provide the global accuracy and integrity needed to ensure safe operation of modern technology.

Backed By:

A satellite view of Earth from space, showing the curvature of the planet and the atmosphere. The top half of the image shows the horizon and the blue atmosphere, while the bottom half shows a detailed view of a river delta or coastal region with intricate water patterns and landmasses.

Xona's Pulsar is the most advanced and resilient positioning, navigation, and timing infrastructure in the world, built to bring real-time, centimeter-level certainty to any device, anywhere on Earth.

Moonraker



NUVIEW



Clint Graumann: Using space-based LIDAR to map the Earth



NUVIEW CEO CLINT GRAUMANN

The CEO and co-founder of NUVIEW is improving our ability to view the world. He's teamed up with SRI to make that happen.

"We're lucky to be working with SRI, a well-respected and proven research organization." – Clint Graumann, founder and CEO of

NUVIEW

Food From Air

Combining advanced biotechnology and carbon recycling tools to manufacture bio-based products

DARPA's **Cornucopia** program aims to create a variety of healthy new microbial-based foods using three ingredients — **air, water, and electricity**.

- SRI International is collaborating with two startups Air Protein, Inc., and Nitricity, Inc. to develop a portable, integrated process to produce nutritionally-complete foodstuff in a variety of flavors.
- These bioprocesses will be coupled with nitrogen pulled from air, captured carbon dioxide and hydrogen & oxygen from electrolysis of water to enable the production of food in a resource-scarce environment.
- Other performers include:
 - The Johns Hopkins University Applied Physics Laboratory
 - University of Illinois Urbana-Champaign
 - Harvard Medical School



At-Home Cancer Detection

A new SynBio diagnostic test—changing the paradigm for cancer screening and building a venture to meet the needs of this revolutionary technology

- ARPA-H has selected an SRI-led team to develop technology as part of the **POSEIDON** (Platform Optimizing SynBio for Early Intervention and Detection in Oncology) program. This pioneering program aims to create at-home cancer screening tests capable of detecting more than 30 different cancer types in their early stages.
- SRI will utilize its **FOX Three platform**, which enables Molecular Guidance Systems (MGS) that bind to specific types of cancer cells. These MGS can deliver a biological payload into cells, triggering the secretion of specific molecules if cancer exists.
- Foothold Labs a startup, will adapt its **NanoRev** platform using next-generation electrochemical sensors for the diagnostic testing platform
- Triple Ring Technologies will apply **bio engineering** best practices to accelerate development;
- Beacon DX Health, **a new SRI spinout**, will drive commercial viability from day one.



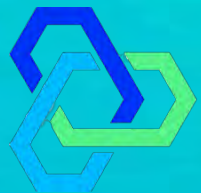
ARPA 



FOOTHOLD
LABS



TripleRing



synfini™

An Automated Synthetic Chemistry Platform

SRI's biosciences division developed SynFini™, a suite of tools that leverages AI to automate the translation of ideas into testable physical molecules. The SynFini platform helps scientists maximize time spent on *what* to make, rather than *how* to make by accelerating chemistry design, development and synthesis. SynFini enables full digital capture of synthesis protocols so they are fully reportable and reproducible. Solutions in the SynFini suite focus on key areas of route design, reaction screening and optimization (RSO), and multi-step synthesis development. The systems can work independently but provide greater value when combined for applications across synthetic chemistry such as new and existing materials discovery and development.

How We Started

Chemists today spend a large proportion of their time manually recreating and scaling literature-reported synthesis procedures at the expense of innovation and productivity. Because of the manual nature of current synthetic chemistry, chemists also face major challenges in reproducibility where reported "known" chemistry generally needs to be re-optimized for use by other practitioners.



“

SRI's investment of time and resources, combined with the unique expertise of our founding team gives us a running start at addressing some of humanity's largest health challenges, helping people live longer, healthier lives. The SRI-developed IP, along with additional seed funding, positions us for success as we enter the commercial market.

– Doug Donzelli, Founder & CEO SynFini, Inc.



Trust for Agentic AI



Zerker's agent and media verification platform provides a foundational layer of trust that allows AI systems to safely act, transact, and decide.

DARPA's **SemaFor & MediaFor** programs brought together world-class researchers to level the digital imagery playing field, which currently favors the **deepfake** manipulator, by developing technologies for the automated assessment of the integrity of an text, image or video and integrating these in an end-to-end media forensics platform to facilitate decisions regarding the use of any questionable image or video.

SRI International utilized the Olive multi-media processing platform to create a best-in-class media and deepfake detection and analytics system. Zerker.ai has released its first product, **treeship**, the first cryptographically provable method for verifying agentic activity.

Other performers include:

- Kitware, Inc., Purdue University, UC Berkeley, and Notre Dame

ZERKER



Agents are already negotiating, transacting, and delegating across systems at machine speed. The protocols exist. The trust layer doesn't," Zerker Labs founder and CEO Revaz Tsivtsivadze.

MDC

Surgical Robot that Operates Inside an MRI



MDC is developing surgical robotic device, ReachMR, provides real-time remote access inside of an MRI using hydraulic transmission system to provide more accurate, simpler, and higher throughput. Its AI system aims to change manual manipulation to automation through motors and sensors enable a sliding scale of autonomy - Manual, power assist, and automation all on one system.

MDC is initially targeting liver cancer to improve current liver biopsy procedures and plans to expand to treatments and other procedures. It is targeting 3 million percutaneous soft tissue biopsies that have ~25% of diagnostic errors. MDC's ReachMR will increase MRI revenue by tenfold that provides much shorter recoup of MRI expenditure to hospitals

How We Started

Sam is a Stanford Ph.D graduate and founded MDC in 2021. MDC leverages existing coding – magnetic resonance guidance for needle placement and fluoroscopic guidance for needle placement, etc. SRI Ventures recently invested in MDC and it resides inside of SRI HQ in Menlo Park



– Sam Frishman, Ph.D,
Founder & CEO of MDC
(Medical Devices Corner)

Partners

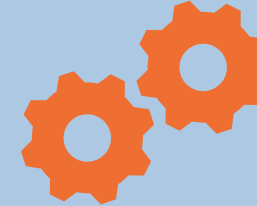


SRI's current AI focus areas



Human-Machine Collaboration

Machines as true partners, optimizing the joint capabilities of humans and machines



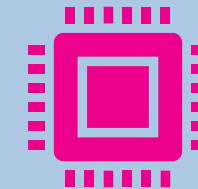
Reliable Machine Learning

Models that can be understood, debugged, and integrated with expertise to minimize mistakes and enhance performance



Trustworthy & Secure Cyber-Physical Systems

Analysis and behavior prediction to achieve trustworthy systems that include sensors, actuators and other hardware components



Low Resource AI

AI architectures for distributed low power, low weight devices and ways to achieve high performance using less data.

NOMURA – SRI Innovation Center

野村SRIイノベーション・センター



Trusted



Tech
Focused



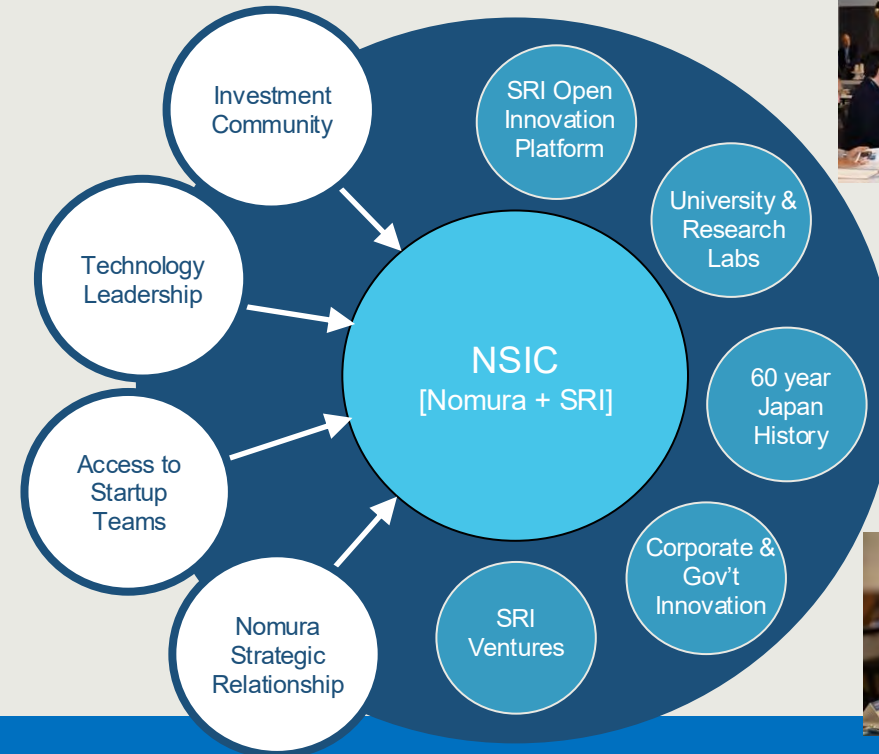
Access to
SRI Network



Innovation
Process

- **Founded** in 2021
- 15+ **Japanese corporate** members
- 100+ participants
- Multiple programs:
 - 8-week Bootcamp
 - 1-year Basecamp
 - Executive AI program
 - Hybrid programs (US/Japan)
 - Innovation Workshops

Silicon Valley open innovation ecosystem



Uniquely Positioned to address Japanese Corporate Innovation Challenges:

- + “Techno pragmatic” thought leadership and deep tech insights -- from world-class experts
- + Hands-on Innovation activities linked to the Silicon Valley ecosystem
- + Curated Open Innovation processes, mindset shift, and culture change through leadership inspiration and development



DARPA Commercial Accelerators

- Provide additional training, mentoring, and coaching
- Techno-economic market mapping and business analysis
- Deal sourcing, and early-stage company building (pre-seed)

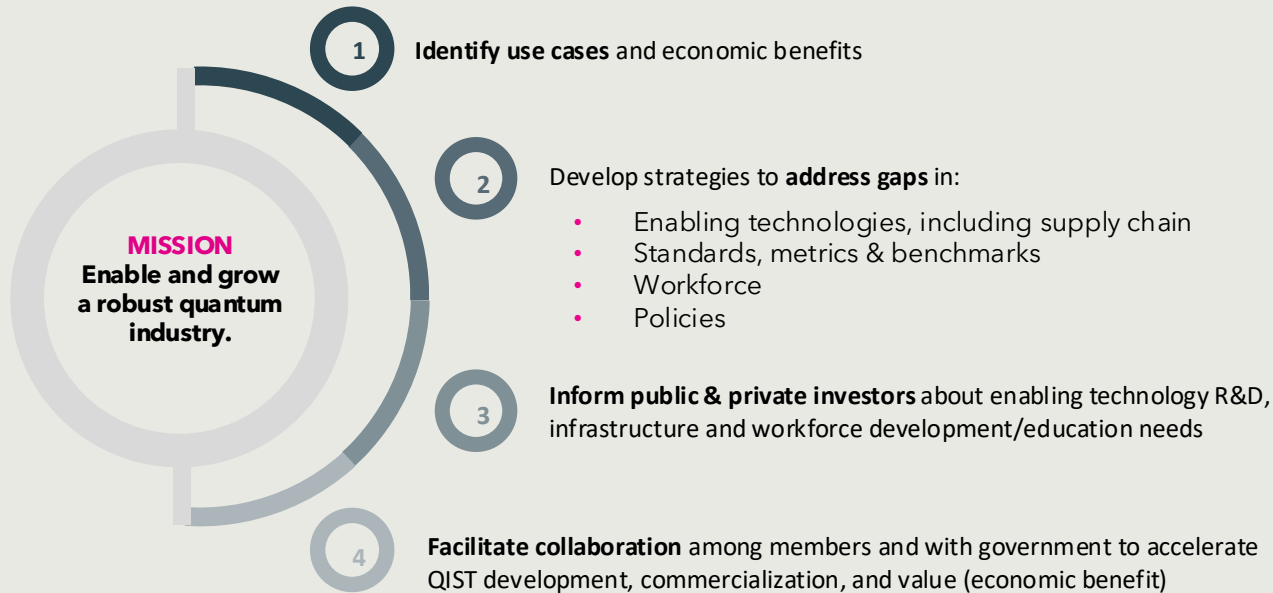
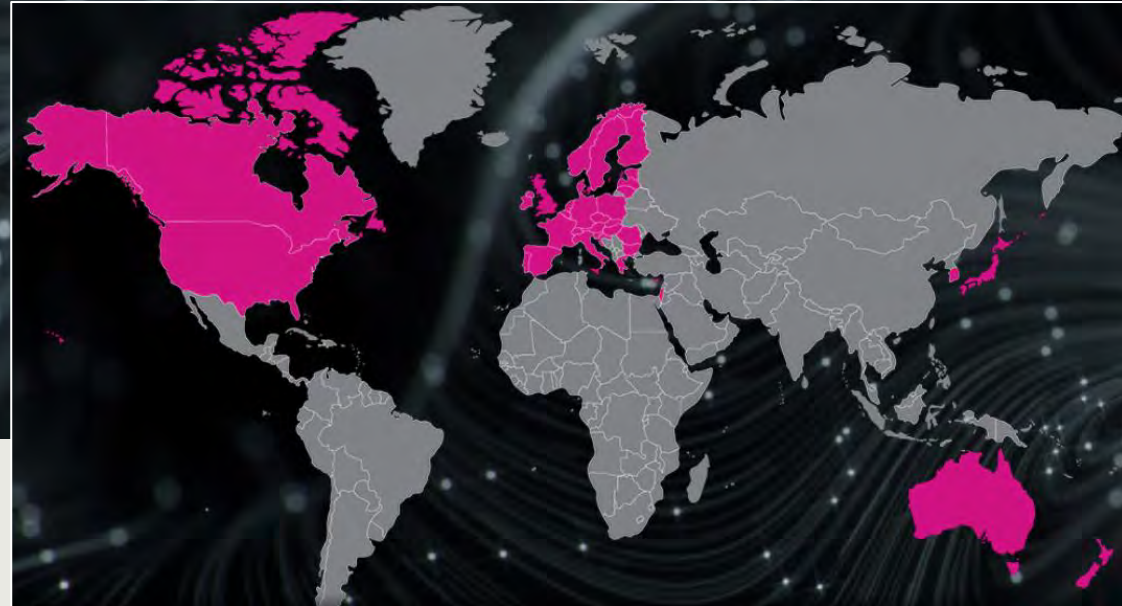


- **SRI International, Menlo Park, CA**
 - ✦ Newlab (NYC) + Naval Postgraduate School Foundation (Monterey, CA)
- Capital Factory, Austin, Texas
- Center for Integration of Medicine and Innovative Technology, Mass General Hospital, Boston, MA
- FedTech, Arlington, Virginia
- Wireless Research Center of North Carolina

Quantum Economic Development Consortium (QED-C)

Enabling & growing the quantum industry

QED-C mission and objectives



- QED-C is managed by SRI as a public/private partnership led by NIST
- 300+ Quantum companies
 - Large: IBM, Google, Microsoft, ++
 - Small: D-Wave, Righetti, ColdQuanta, ++
- 40+ Universities
 - Stanford, Harvard, Colorado, UCLA
- 36 Countries
 - US, Canada, UK, EU, Japan....



Create the Future of the World.

Change society with deep tech that the world has never seen.

Establishment of global networks



Partner Organizations for Pilot Activities



IMPERIAL



Activate

•HAKUHODO•



1

International Research Programs

▼

2

Venture Builder Programs

▼

3

Talent Development (Fellowship) Programs

▼



Agentic AI for Banking

- **Kasisto** is an agentic AI company spun out of SRI, led by the same development of foundational AI technologies behind Apple's Siri.
- The company was created through a collaboration between SRI and BBVA, one of the world's leading financial institutions. BBVA partnered with SRI to apply cutting-edge AI and conversational interfaces to banking, helping establish **Kasisto** as a dedicated fintech AI venture.
- Kasisto's flagship platform, **KAI**, enables intelligent digital banking assistants that help customers manage accounts, make payments, receive financial guidance, and interact with banks through natural language conversations. The company has since grown into a *leading provider of conversational AI solutions for financial services globally*.



Partner



By The Numbers

16

Countries

5

Continents

55

Financial Institutions

50M+

Consumers with access to
KAI

50%

Reduction in Live Chats



Thank You!