



# Monthly Progress Summary LSIDB Pumping Stations

November 2025

## Key Monthly Progress

### Lapperditch

- Strip out and removal of old pumps and pipework
- Erect scaffold handrail and toe boards around wet well
- Jetvac cleanse wetwell for grit blasting
- Grit blast
- Build additional sump for control of water from highway drain to create dry wet well ready for welding
- Stone up for safer access and egress
- Install new kiosk and base slab for power supply

### Marshfield

- Strip out and removal of old pumps and pipework
- Erect scaffold handrail and toe boards around wet well
- Stone up for safer access and egress
- Install new kiosk and base slab for power supply
- Pump out fields due to flooding
- Overpumping and drain down of wet well due to bad weather has caused a delay to grit blasting and welding

### Wick Green

- Setup Dam and Over Pumping for Survey Works

### Elmore Back

- Electrical Design and Procure Steelwork

## Key Planned Work for Next Month

### Lapperditch

- Cut/grind out existing plates, level sensors
- Weld plates to wet well
- Grout fill
- Install meters for electric supply
- Break out access track and excavate to formation
- Install concrete and vegetated walls

### Marshfield

- Strip out and removal of old pumps and pipework
- Erect scaffold handrail and toe boards around wet well
- Stone up for safer access and egress
- Install new kiosk and base slab for power supply
- Pump out fields due to flooding
- Overpumping and drain down of wet well due to bad weather has caused a delay to grit blasting and welding

### Wick Green

- Complete site surveys

### Elmore Back

- Continue with the Design and Procure DNO Kiosk

## Key Project Dates

### Lapperditch

<u>Date</u>	<u>Activity</u>
November 2025	Design Completion
October 2025	Site Construction Commence
Spring 2026	Commissioning
Spring 2026	Site Works Complete
Spring 2026	Project Completion

### Marshfield

<u>Date</u>	<u>Activity</u>
November 2025	Design Completion
October 2025	Site Construction Commence
Winter 2025	Commissioning
Spring 2026	Site Works Complete
Spring 2026	Project Completion

### Wicks Green

<u>Date</u>	<u>Activity</u>
Autum 2025	Survey Works

### Oldbury Naite

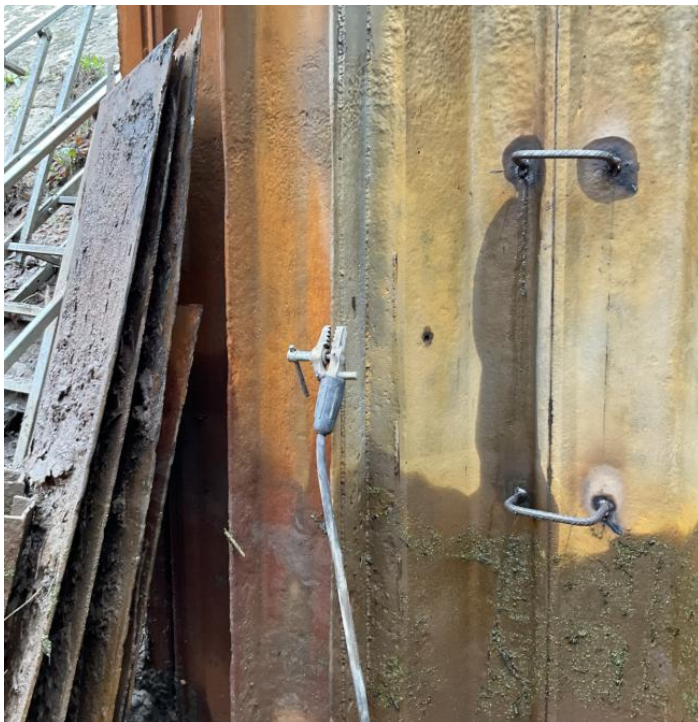
<u>Date</u>	<u>Activity</u>
Winter 2026	Survey Works

### Elmore Back

<u>Date</u>	<u>Activity</u>
Winter 2026	Design Completion
Spring 2026	Site Construction Commence
Spring 2026	Commissioning
Spring 2026	Site Works Complete
Spring 2026	Project Completion



Lapperditch Piles Prepped for Over Plating



Lapperditch Overplating welding commenced



Marshfield Grit blasting of sheet piles



Wicks green dam setup for survey works