

## USR-VCOM (USR-TCP232 series) — Quick Setup for GateKeeper

One-page guide for creating a virtual COM port and linking it to your USR TCP-to-serial device on port 1001.

(Prepared for GateKeeper)

### Purpose

Create a virtual COM port on Windows that connects to your USR TCP-to-serial device so GateKeeper can communicate over TCP port 1001.

### Prerequisites

- USR-VCOM software installed (run as Administrator).
- Device powered and on the same LAN (know or plan its static IP).
- The device's MAC address (to identify it in the scan).
- A free COM number (prefer COM11 or higher to avoid conflicts).

### A. Find the converter

- Open USR-VCOM → click Search.
- Identify your unit by MAC address in the results (match the sticker/label).
- If nothing is found, ensure PC and device are on the same subnet, temporarily disable firewall, and re-scan.

### B. Configure the device (once per unit)

- Open the device from the search result.
- Set network parameters (Static IP, Subnet, Gateway) per site policy.
- Set Local/Service TCP Port to 1001.
- Work Mode: TCP Server (PC will connect to it).
- Serial settings: match your controller (e.g., 115200, 8-N-1, no flow control).
- Save/Apply and allow the device to reboot if prompted.

Note: The yellow-highlighted network fields shown in screenshots are site-specific (IP, mask, gateway).

### C. Add the virtual COM on Windows

- In USR-VCOM, click Add COM.
- Choose a port number > COM10 (e.g., COM11).
- Mode: TCP Client.
- Remote IP: the device static IP from step B.
- Remote Port: 1001.
- Click OK/Apply. The status should become Connected.

#### D. Add another device/IP later

- Repeat Section C to create an additional COM (e.g., COM12).
- Set TCP Client → [New Device IP] : 1001.
- Each converter gets its own COM port.

#### Troubleshooting

- Not found in Search: check cabling/VLAN/firewall, ensure same subnet, or temporarily disable firewall and scan again.
- Can't bind COM: pick a higher port (COM11+), run USR-VCOM as Administrator, ensure no other driver is using it.
- Won't connect: confirm device is in TCP Server mode on port 1001 and that outbound TCP 1001 isn't blocked.
- Unstable link: use a static IP on the converter and verify the serial parameters match the controller.

#### Screenshots

The screenshot shows the 'Set Device' dialog box in the USR-VCOM software. The dialog is titled 'Set Device' and has a close button (X) in the top right corner. It contains the following fields and options:

- MAC:** 9C A5 25 D7 6F 32
- Device IP:** 192.168.0.109
- Net Protocol:** TCP Server (dropdown menu)
- Subnet Mask:** 255.255.255.0
- Gateway:** 192.168.0.1
- BaudRate:** 38400
- COM Parameter:** NONE (dropdown menu), 8 (dropdown menu), 1 (dropdown menu)
- Device Port:** 1001
- Remote IP:** 192.168.0.1
- Remote Port:** 8233
- ID:** 0001
- HEX:** ☒
- Special function:**
  - ☐ Connect
  - ☐ Data
  - ☒ RS485
  - ☐ RS422
  - ☒ Reset
  - ☒ Link
  - ☐ Index
  - ☐ RFC2217

At the bottom of the dialog, there are two buttons: 'OK' (with a green checkmark icon) and 'Cancel' (with a red X icon).

Figure 1: USR-VCOM screen (from your original document).

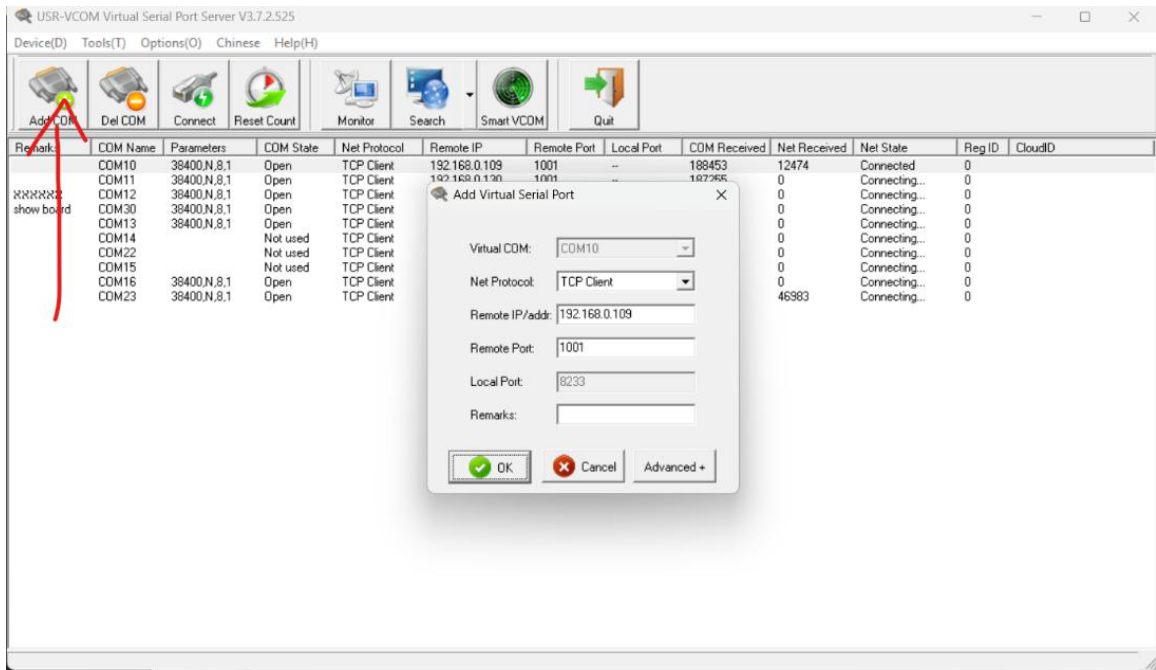


Figure 2: USR-VCOM screen (from your original document).

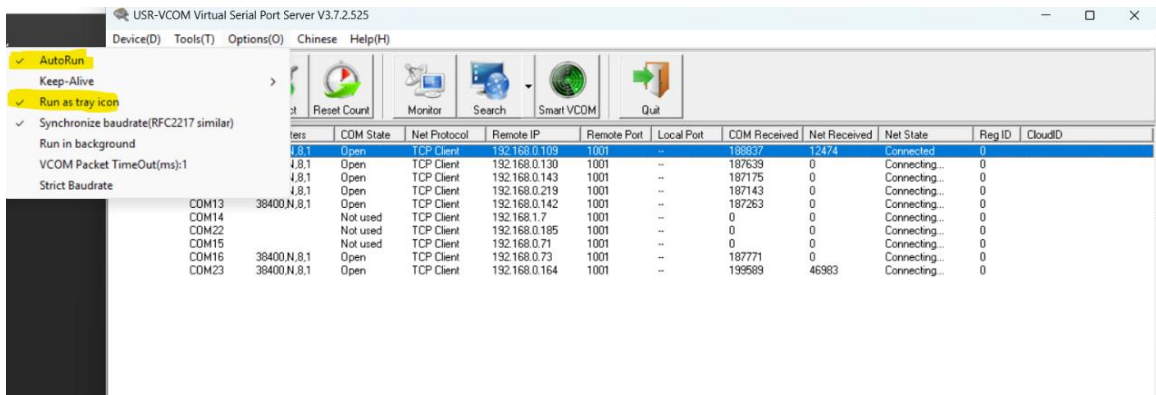


Figure 3: USR-VCOM screen (from your original document).