

# STEAM ROOM AND SAUNA

EXPERIENCE SERENE LUXURY AND ULTIMATE RELAXATION IN A MODULAR SPA DESIGNED FOR BOUTIQUE HOTELS, RESORTS, AND WELLNESS CENTERS.



## KEY FEATURES

- FLOOR-TO-CEILING MIRROPPANE GLASS FOR NATURAL LIGHT AND PRIVACY.
- ELEGANT, MINIMALIST INTERIORS FINISHES.
- DESIGNED FOR COMFORT AND RELAXATION.
- MODULAR CONSTRUCTION FOR EASY INSTALLATION AND ADAPTABILITY.

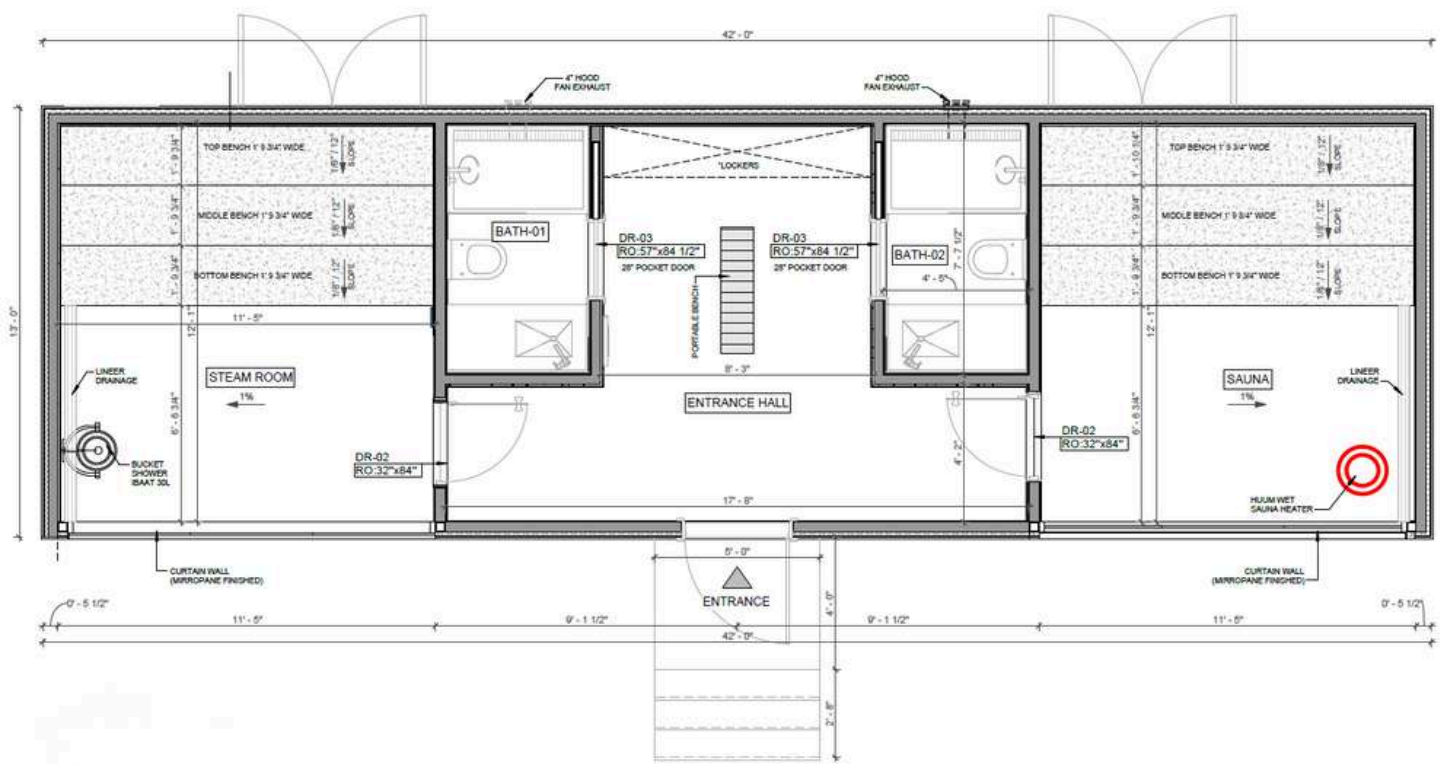
## EXTERIOR DIMENSIONS

- WIDTH: 13'
- LENGTH: 42'
- HEIGHT: 12'
- TOTAL AREA: 546 SQ. FT.

## PERFECT FOR:

BOUTIQUE HOTELS • RESORTS • WELLNESS CENTERS





**BRIGHT, ELEGANT, AND DESIGNED FOR ULTIMATE COMFORT AND RELAXATION.**

MODERN | MODULAR



[www.modernmod.ca](http://www.modernmod.ca)



[@modernmod.ca](https://www.instagram.com/modernmod.ca)



[@modernmod.ca](https://twitter.com/modernmod.ca)

1211 8A ST, NISKU, AB T9E 7R3  
[sales@modernmod.ca](mailto:sales@modernmod.ca)  
+1 844 474 4488