

# COMMERCIAL WASHROOM

---



## **KEY FEATURES**

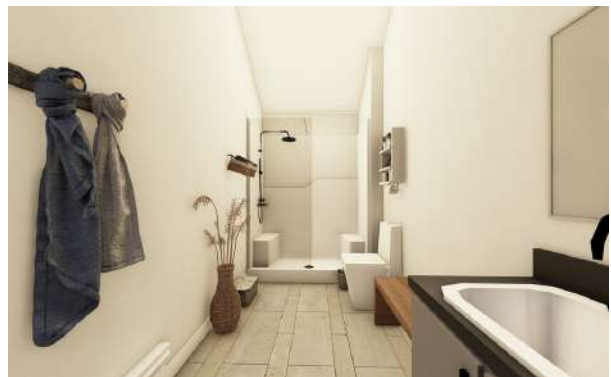
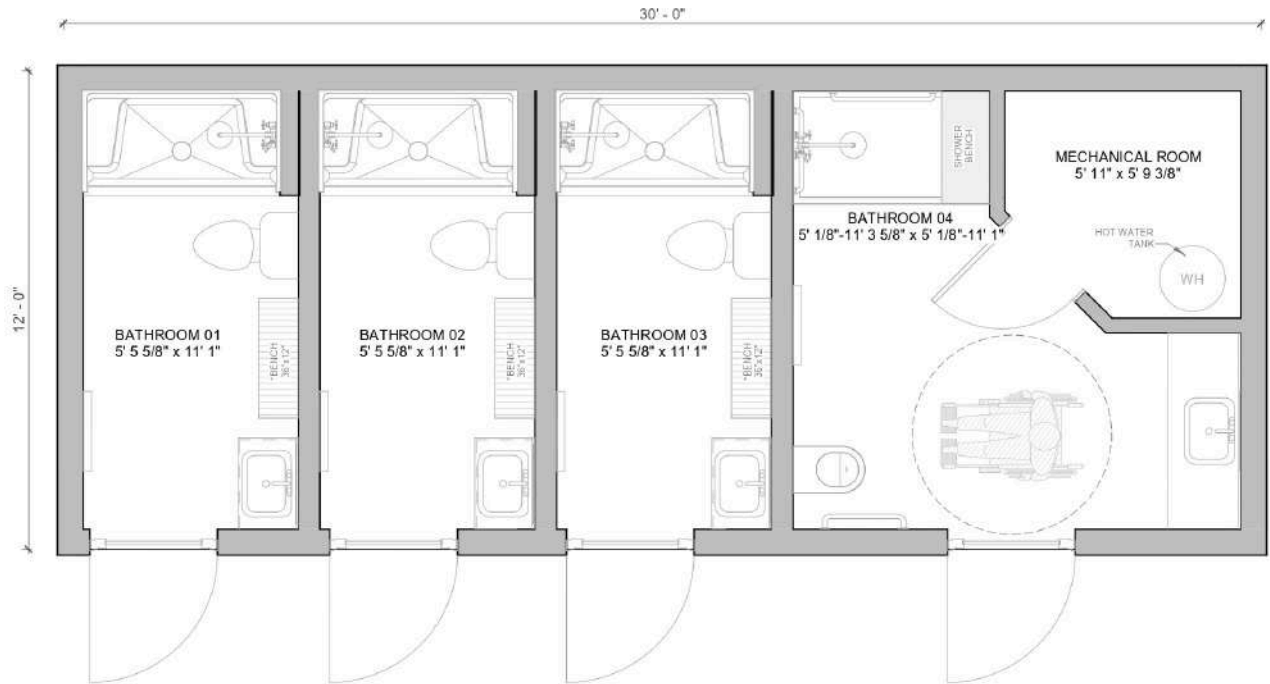
- MODERN AND STYLISH DESIGN.
- BRIGHT AND WELCOMING INTERIOR.
- FLEXIBLE AND ADAPTABLE LAYOUT.
- EASY TO MAINTAIN AND DURABLE.
- IDEAL FOR ALL COMMERCIAL ENVIRONMENTS.

## **EXTERIOR DIMENSIONS**

- WIDTH: 12'
- LENGTH: 30'
- HEIGHT: 13' 4"
- TOTAL AREA: 360 SQ. FT.

## **PERFECT FOR:**

RETAIL CENTERS • OFFICE COMPLEXES • EVENT VENUES



**FLEXIBLE, ADAPTABLE, AND READY FOR ANY BUSINESS NEED.**

MODERN | MODULAR



[www.modernmod.ca](http://www.modernmod.ca)



@modernmod.ca



@modernmod.ca

1211 8A ST, NISKU, AB T9E 7R3  
 sales@modernmod.ca  
 +1 844 474 4488