

THE PANORAMA



KEY FEATURES

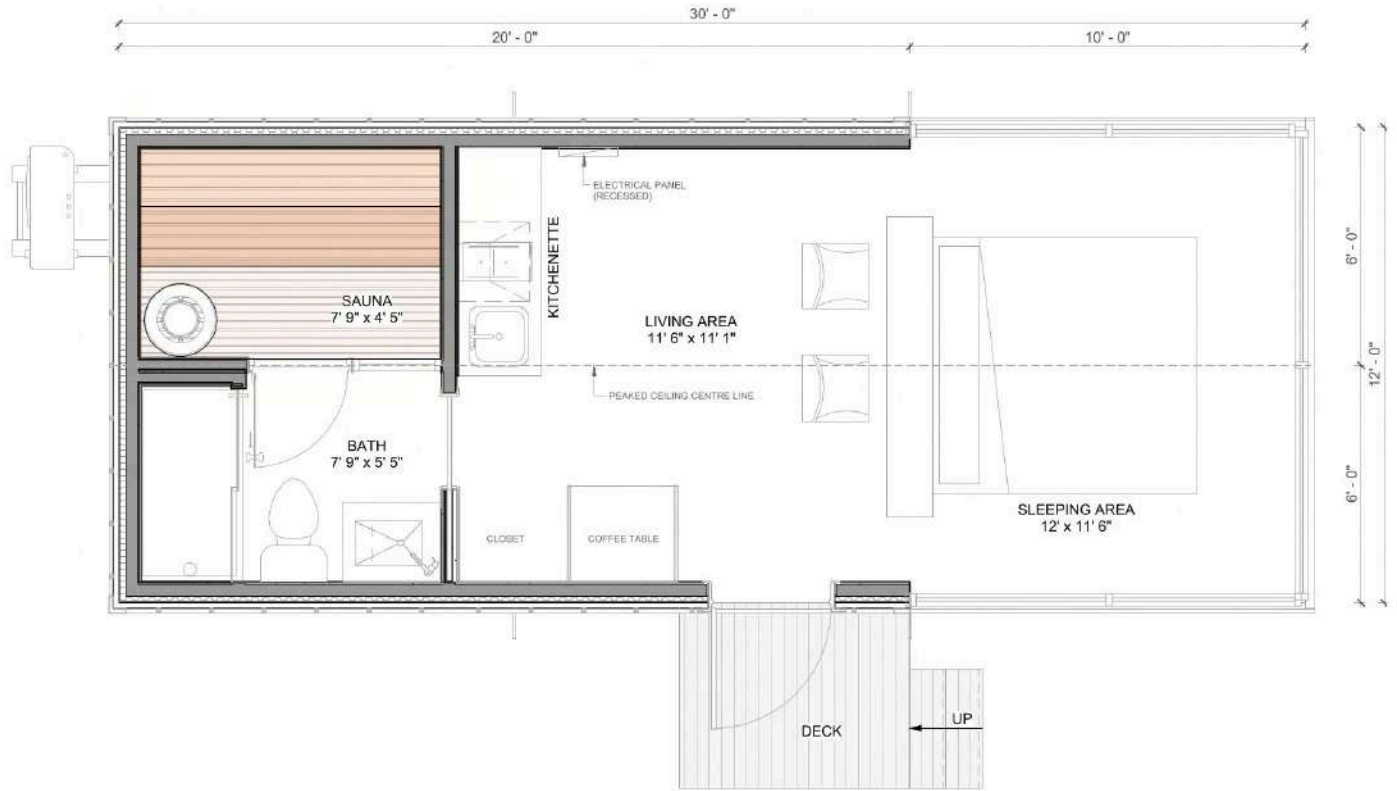
- MIRRORED GLASS FOR PRIVACY AND LIGHT.
- ELEGANT INTERIORS WITH QUALITY FINISHES.
- MODERN KITCHENETTE WITH TOP MATERIALS.
- SAUNA FOR RELAXATION AND CALM.
- INSULATED FOR ALL SEASONS.

EXTERIOR DIMENSIONS

- WIDTH: 12'
- LENGTH: 30'
- HEIGHT: 13'4"
- TOTAL AREA: 360 SQ. FT.

ACCOMODATIONS

- 2 PEOPLE, ONE KING BED.



WHERE STYLE AND COMFORT CONNECT, CREATING A SPACE OF EFFORTLESS SOPHISTICATION.

MODERN | MODULAR



www.modernmod.ca



@modernmod.ca



@modernmod.ca

1211 8A ST, NISKU, AB T9E 7R3
 sales@modernmod.ca
 +1 844 474 4488