

Installation Instruction

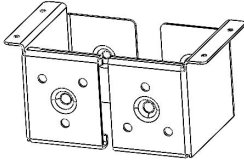
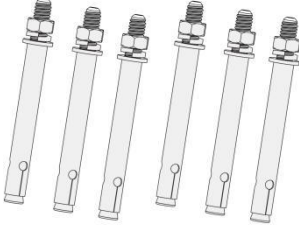

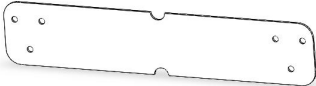
Wall-mounted Bracket (for B4850)



1 Unpacking inspection

- When the equipment arrives at the installation site, loading and unloading should be carried out according to the rules and regulations, so as to prevent from being exposed to sun and rain.
- Before unpacking, the total number of packages shall be indicated according to the shipping list attached to each package, and the case shall be checked for good condition.
- In the process of unpacking, handle with care and protect the surface coating of the object.
- Open the package, the professional installation personnel should read the technical documents, verify the list, according to the configuration table and packing list, ensure objects are complete and intact. If the internal packaging is damaged, it must be inspected and recorded in detail.

Packing list is as follows:

Item	Quantity	Figure
Bracket	2	
M6 expansion screw	6	
M6 expansion screw	2	
Positioning cardboard	1	

2 Engineering coordination

Attention should be paid to the following items before construction:

- Power cable specification.
- The power cable specification shall meet the requirements of maximum discharge current for each product.
- Mounting space and bearing capacity.
- Make sure that the battery has enough space to install, and that the battery rack and bracket have enough load capacity.
- Wiring.
- Make sure the power cable and ground wire are reasonable. Not easy to short-circuit, water and corrosion.

3 Equipment installation

The wall for battery installation shall be solid brick or cement wall with strong bearing capacity and wall thickness no less than 100mm.

Mounting space requirements:

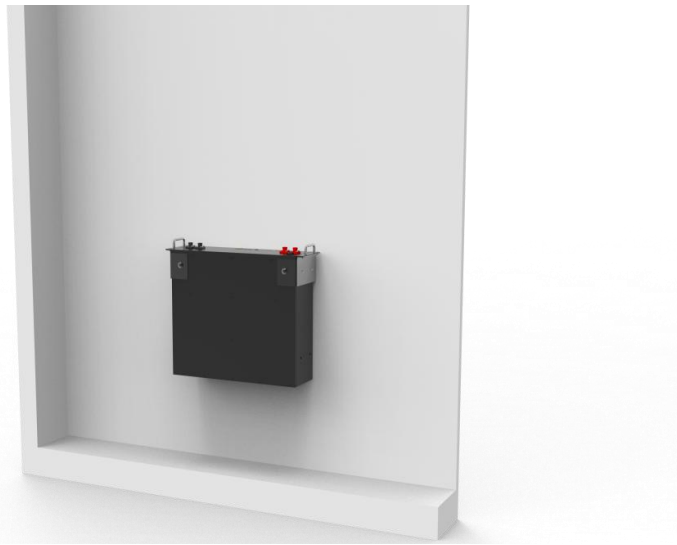


Figure 3-1 Mounted on the wall

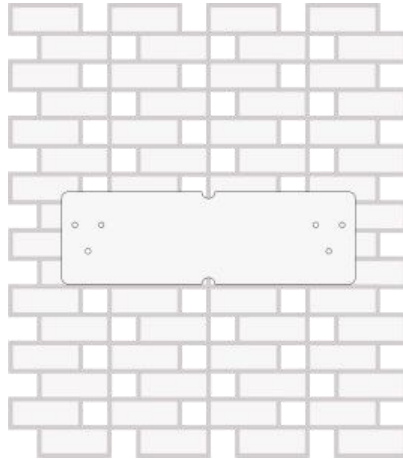
Table 3-1 Installation steps

Step1 Mechanical installation
1. Equipment installatio
Step 2 Battery module installation
1. Ensure that the battery power is turned off.
2.Battery module installation

Mechanical installation

Step1

Use the positioning cardboard (provided in accessory package) and mark the screw hole positions on the wall. Shown as Figure



Step 2

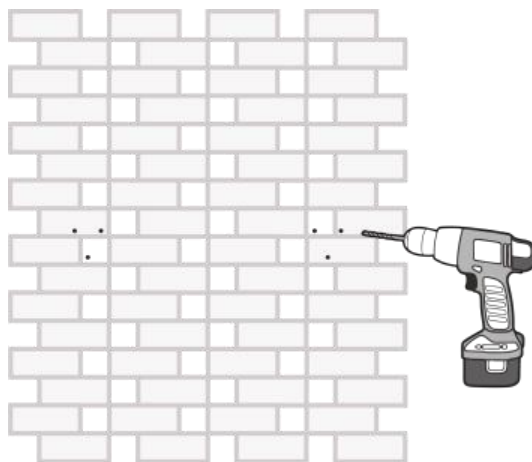
The cardboard must be perpendicular to the ground while draw.

Step 3

The bottom of the cardboard is about 600mm from the ground.

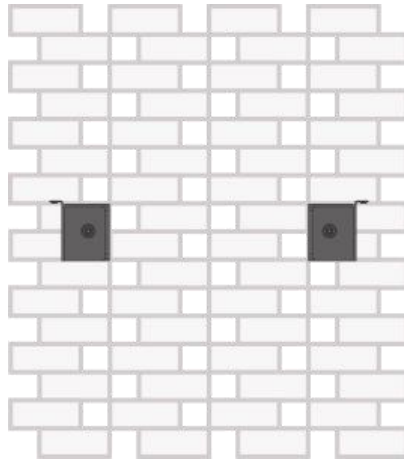
Step 4

According to the position of the mark, 6 holes in diameter 10mm and depth of more than 70mm are hit on the wall with an electric drill, which are used for fitting expansion bolt M6.



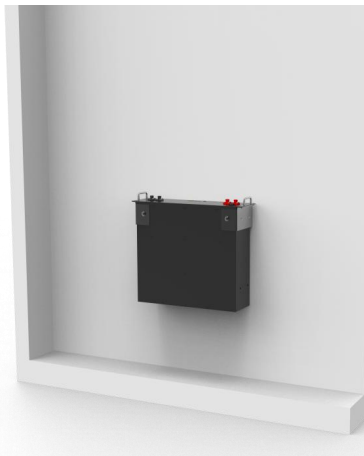
Step 5

Fixing the expansion bolt M6 into the bottom of the hole on the wall, and fix the Support bracket on the wall with M6 bolts, twisting force keeps 9.8N.m



Battery module installation

Carry or hoist the battery box to the installed Battery bracket. Fixing the Support bracket and the upper part of the battery box with M5 screws, twisting force keeps 9.8N.m.





Discover Your Nature



Official Website



Digital version access

Dyness Digital Energy Technology Co., LTD.

www.dyness.com