

V800IS

Full Servo Robot
IMM RANGE 60 - 200 Tons



V1700ID	Standard		Metric	
Movement	Vertical Arm	Single Stage	Single Stage	Vertical Arm
IMM Range	US Tons	60 - 200	534 - 1779	kN
Max Payload	lbs	17.64	8	kg
Vertical Stroke	in	31.5	800	mm
Single Arm Strip	in	35.43	900	mm
Traverse	in	55.12	1400	mm
Gripper Angle	Degree (°)	90	90	Degree (°)
Robot Weight	lbs	838	380	kg
Drive System	Drive	AC Servo Motor	AC Servo Motor	Drive
Working Air Pressure	psi	73	0.5	MPa
Air Consumption	in ³ /cycle	317	5.2	NL/cycle
Power Supply	Power Supply	460V / 3P / 60Hz	460V / 3P / 60Hz	Power Supply

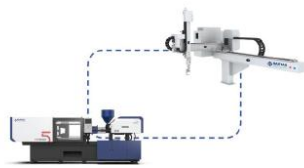
V800IS

Full Servo Robot
IMM RANGE 60 – 200 Tons

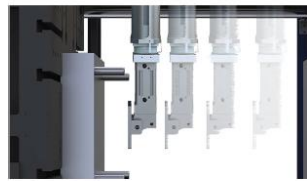


STANDARD FEATURES:

- 7-Inch Color Touchscreen Control
- Riser/Adapter Plate
- 2 Vacuum Circuits
- 2 Gripper Circuits
- Spare 18 Inputs / 14 Output Signals
- Pneumatic "Flip" C-Axis
- 3-Axis Synchronized Movement
- Advanced Vibration Dampening
- Fully Unlocked Robot Pendant
- Large Mold Storage Capacity
- Advanced Mold & Vertical Arm Protection
- Quick Change Universal Mounting Plate on Vertical Arm
- Flexible Orientation Swap for Operator or Non-Operator Part Discharge
- Euromap 67 IMM Interface



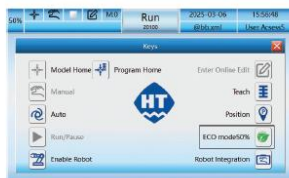
Seamless IMM to Robot Integration via Ethernet



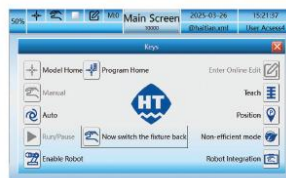
Ejector Pin Follow



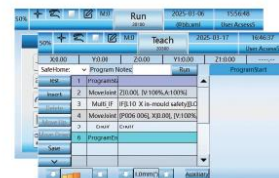
Advanced Mold Protection



ECO Mode



Flexible Program Switching



Teach Homing