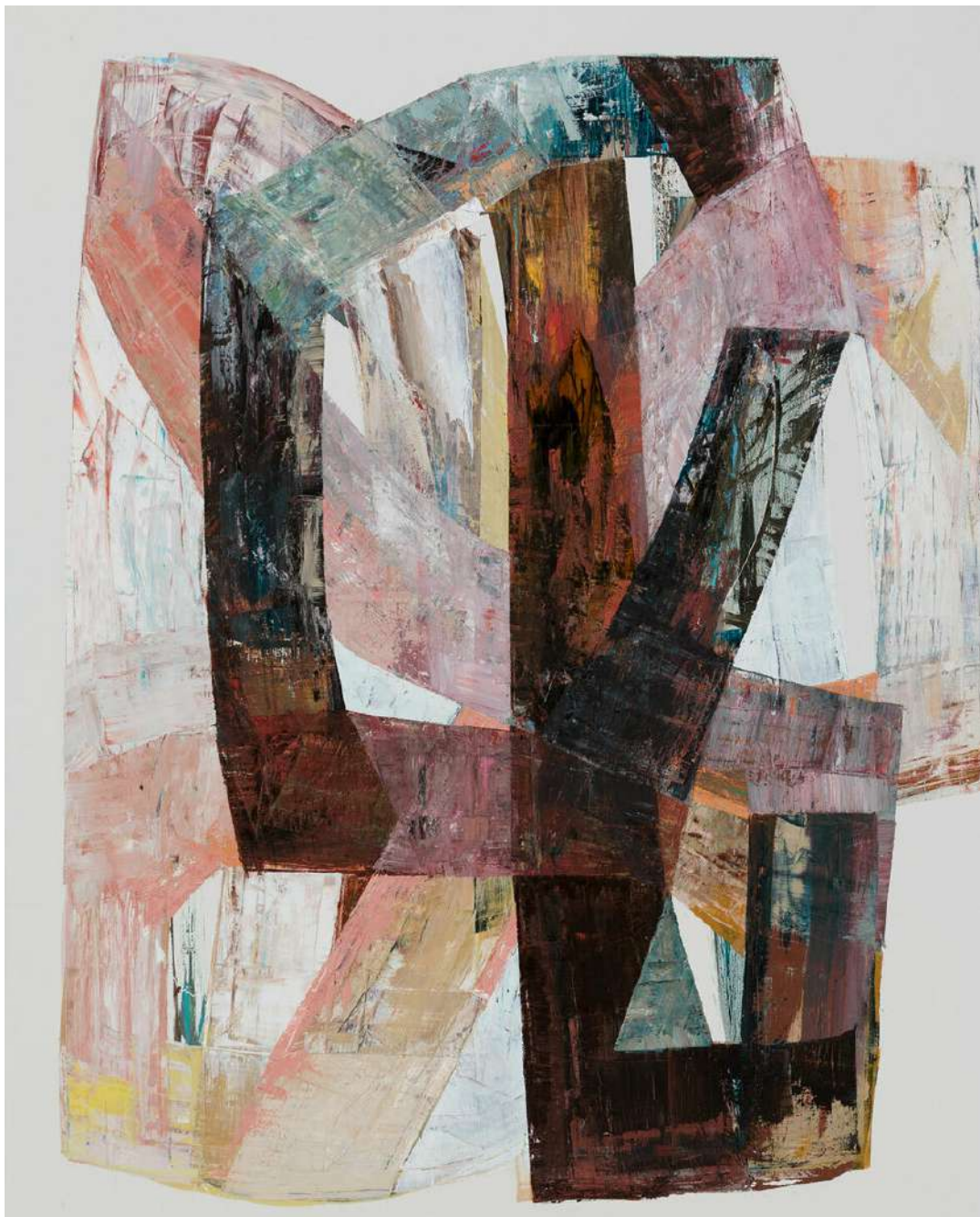


# Kate Elsey - Nature Script

28 June – 19 July 2025



# Kate Elsey - Nature Script

28 June – 19 July 2025

Underneath over the top  
Clouds hover  
And bones  
Garnish the land

Threads of veins in leaves  
Circulating the trees  
Holding up the sky  
Capturing water

Trickling the versant  
Etching stories  
Of time  
Into rock

The face of our life  
Is written in clay  
In mountains  
In our form  
Kate Elsey 2025

Kate Elsey is renowned for her lyrical paintings, where spirited explorations of texture and colour trace meandering pathways across the canvas. At first glance, her works appear as bold abstract gestures, yet a closer look reveals a deep poetic connection to the natural world. From her studio in outer Melbourne, surrounded by native flora and fauna, Kate immerses herself in a meditative creative practice. She approaches painting with the sensibility of a sculptor, intuitively layering pigment with a palette knife—smearing, scraping, moving in rhythmic cycles. Through this process, a dynamic interplay of colour, texture, and form emerges, culminating in a moment of perfect balance.

Her latest body of work pays tribute to the natural world she inhabits, capturing both the intimacy of our entangled relationship with nature and the awe of its lifeforces. Nature Script marks Kate Elsey's 24th solo exhibition and a decade of showing with cbOne Gallery, formerly Eastgate Gallery. Her solo exhibition Bass Lines (2020) was an immersive response to the natural wonder of Kakadu, NT, followed by a major commission for The Ritz-Carlton, Melbourne, in 2023—a large-scale poetic landscape of moonlit Birrarung Marr waterways.

# Kate Elsey - Nature Script



KATE ELSEY

Underneath and over the Top, Clouds Hover and Bones  
Garnish the Land, 2025

Oil on linen

122 x 182 cm

\$13,800



# Kate Elsey - Nature Script



KATE ELSEY  
Folding and Unfolding, 2025  
Oil on linen  
150 x 100 cm  
\$11,500

# Kate Elsey - Nature Script



KATE ELSEY  
Tricking the Versant, 2025  
Oil on paper on linen  
190 x 148 cm  
\$14,500



# Kate Elsey - Nature Script



KATE ELSEY

Annotated Through Rain Wind and Time, 2025

Oil on paper on linen

192 x 148 cm

\$14,500

# Kate Elsey - Nature Script



KATE ELSEY  
Evolutionary Wisdom, 2025  
Oil on linen  
152 x 122 cm  
\$12,500 ●



# Kate Elsey - Nature Script



KATE ELSEY

Threads of Veins in leaves, circulating the trees, Holding up the Sky, 2025

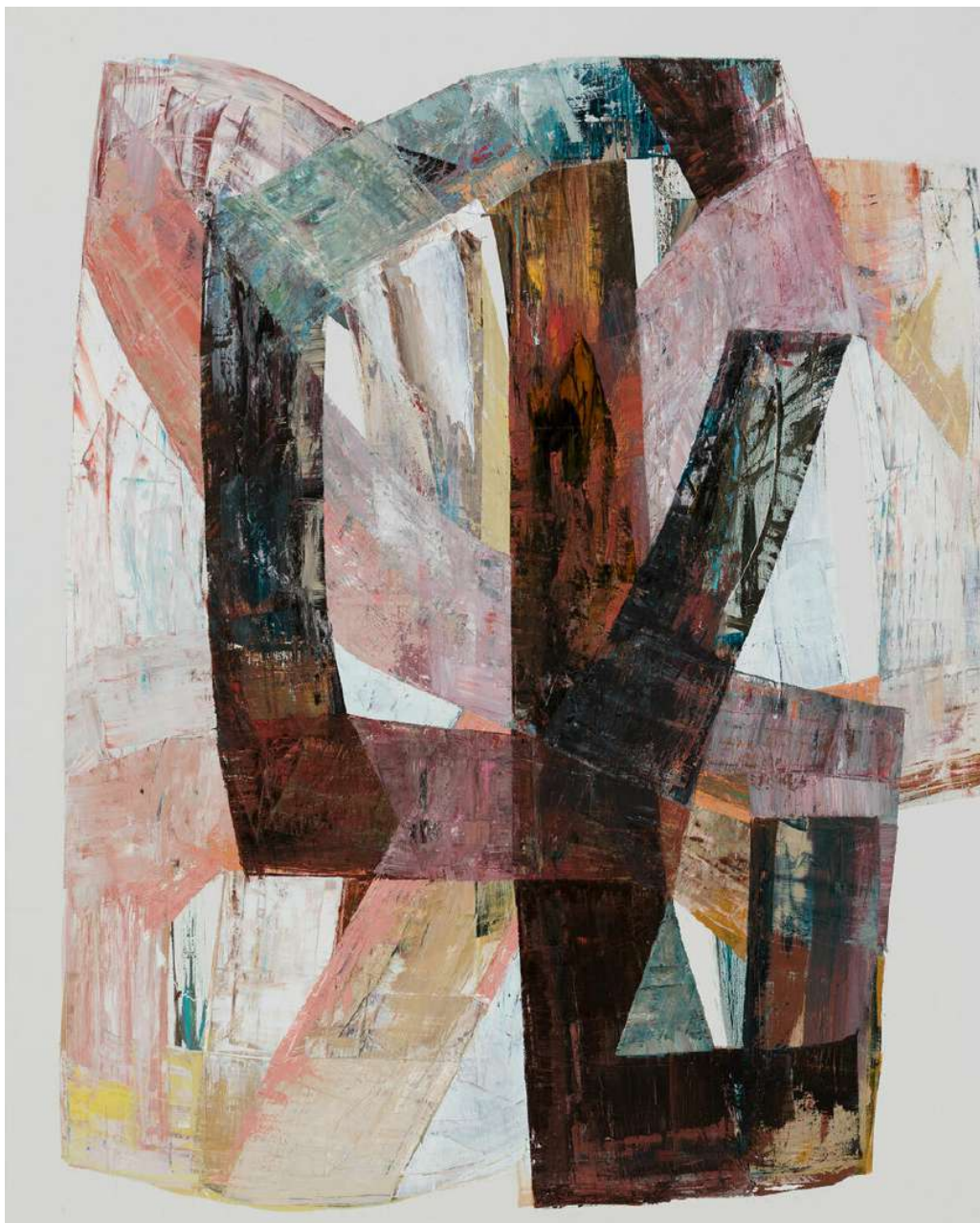
Oil on linen

182 x 122 cm

\$13,800



# Kate Elsey - Nature Script



KATE ELSEY

Language of Nature's Imperceptible Rules, 2025

Oil on linen

152 x 122 cm

\$12,500

# Kate Elsey - Nature Script



KATE ELSEY  
Sonnet of the Night, 2025  
Oil on linen  
150 x 92 cm  
\$10,800



# Kate Elsey - Nature Script



KATE ELSEY  
Wild Is The Wind  
Mixed media on paper  
51 x 36 cm  
\$650

# Kate Elsey - Nature Script



KATE ELSEY  
Etched Earth Waterway I  
Mixed media on paper  
36 x 51 cm  
\$650



# Kate Elsey - Nature Script



KATE ELSEY  
Last Bit Of Light  
Mixed media on paper  
42 x 30 cm  
\$650

# Kate Elsey - Nature Script



KATE ELSEY  
Sculpted Cold Fire Bouquet  
Mixed media on paper  
42 x 30 cm  
\$650



# Kate Elsey - Nature Script



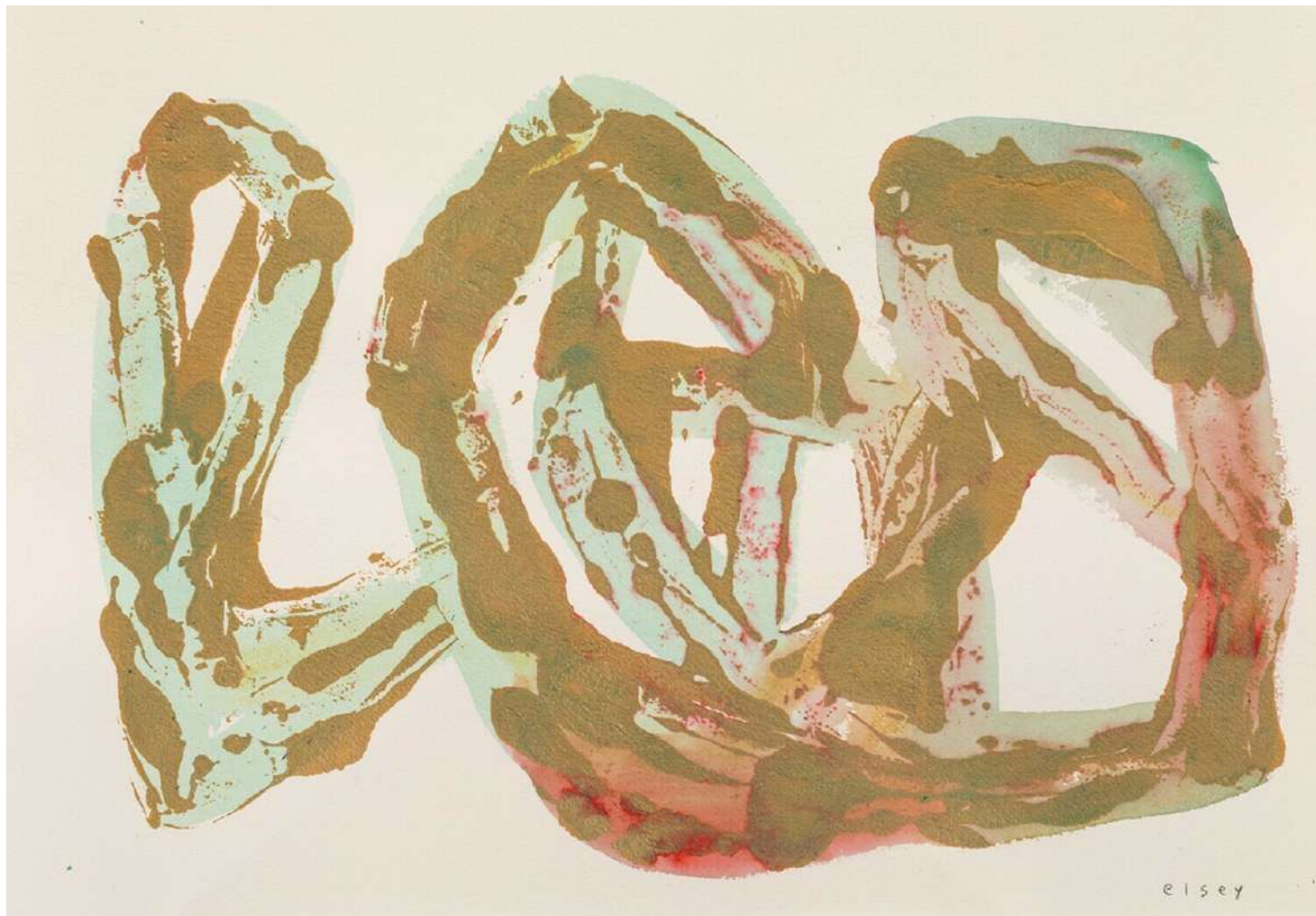
KATE ELSEY  
Capillarity II with moon  
Mixed media on paper  
42 x 30 cm  
\$650

# Kate Elsey - Nature Script



KATE ELSEY  
Floating Time  
Mixed media on paper  
52 x 43 cm  
\$650

# Kate Elsey - Nature Script



KATE ELSEY  
Etched Earth Waterway II  
Mixed media on paper  
36 x 51 cm  
\$650



# Kate Elsey - Nature Script



KATE ELSEY  
Sunset Forest And Sulfur Crested Cockatoos  
Mixed media on paper  
42 x 30 cm  
\$650

# Kate Elsey - Nature Script



KATE ELSEY  
Capillarity I with moon  
Mixed media on paper  
42 x 30 cm  
\$650

# Kate Elsey - Nature Script



KATE ELSEY  
All That Life Is All That we Are  
Mixed media on paper  
42 x 30 cm  
\$650



# Kate Elsey - Nature Script



KATE ELSEY  
Haiku Dusk, 2025  
Oil on linen  
102 x 92 cm  
\$8,800



# Kate Elsey - Nature Script



KATE ELSEY  
Etching Stories of Time into Rock, 2025  
Oil on linen  
150 x 100 cm  
\$10,000

# ARTIST BIO

## Kate Elsey

Kate Elsey (b. 1969) is an Australian artist whose deep-rooted love for nature is expressed through intricate landscapes and abstract explorations of colour. Her work articulates life in perpetual movement while honouring static biomes, each piece serving as an exclamation of the planet's majesty.

Her paintings have been selected for numerous group exhibitions and prestigious art prizes, including the Paddington Art Prize, National Outback Art Award, and twice as a finalist in the Natural History Art Prize. Her work 150 Million Years received a high commendation and toured the South Australian Museum and Canberra Archives.

Over the past five years, Kate has presented four solo exhibitions and completed more than 30 public commissions. Her works are held in over 100 private collections across Australia, Malaysia, Singapore, Kuwait, England, and the USA.

Recent major acquisitions include artworks for The Ritz-Carlton Suites in Perth and Melbourne. Additionally, her works feature in esteemed corporate collections such as IHG Intercontinental Group Perth and the Leeuwin Estate Art Series, Western Australia.

In addition to two of Kate's artworks being auctions at the Telethon Lexus Ball Perth for a total of \$136,000 with all proceeds going to the Telethon Kids Institute. Kate's belief in the power of art also sees her contributing work to raise funds for ground-breaking grass-roots organisations.