

Restricted Images: Selections from REVISIONS

Warlukurlangu Artists in collaboration with Patrick Waterhouse

22 NOV - 13 DEC 2025

In the past Kardiya (Walpiri word for anyone who is not Aboriginal Australian) recorded whatever they wanted. Slowly we have been rewriting that narrative. Correcting the record. We are inserting our stories into the documents. We are putting our Jukurppa onto these archival papers.

Otto Jungarrayi Sims - Chairman, Warlukurlangu Art Centre

REVISIONS is an archive of images that I've made and historical documents that look at understanding and misunderstanding of Australia from a European perspective that have been taken to Walpiri Country to the art centres of Yuendumu and Nyirippi and been revised by artists and community members. This process is about physically transforming documents opposed to just changing the way the story is told, we are fundamentally changing the thing itself so people can see it in a more holistic fashion. The way in which we often describe it is putting in missing information.

Patrick Waterhouse

Restricted Images: Selections from REVISIONS presents a decade-long collaboration between Warlpiri artists of Central Australia and British artist Patrick Waterhouse.

The series ***Restricted Images*** grew from photographs taken by Waterhouse during his time in Warlpiri Country. Shared with artists, families and community members, these images became a ground for response. The project led Warlpiri artists to amend his photographs by overlaying their cultural mark-making, bringing their own identity to the forefront. The full series features collaborations with 39 artists from the Warlukurlangu Artists Art Center in Yuendumu NT, who painted their Jukurppa onto documents including historical illustrations, maps and flags.

Previously exhibited at The Whitby Museum (UK) and Rautenstrauch-Joest-Museum (Germany), this body of work returns to Australia for its launch at Burrinja Cultural Centre and cbOne Gallery.

Across the two galleries, a comprehensive survey of the project is presented, including the first Australian showing of the two-channel installation film ***The True Story***.

Visitors are encouraged to visit both exhibitions and participate in the public programs on Saturday 22 Nov at cbOne Gallery Abbotsford and Sunday 23 November at Burrinja Cultural Centre Upwey together with Patrick Waterhouse and community from Warlukurlangu Artists.



Chapman & Bailey
1C Marine Parade
Abbotsford VIC 3067

gallery@chapmanbailey.com.au
+61 (03) 9415 8666
www.cb-onegallery.com

Restricted Images: Selections from REVISIONS

Warlukurlangu Artists in collaboration with Patrick Waterhouse

22 NOV - 13 DEC 2025

1



Patrick Waterhouse

Satellite image of Lake Makay, 2014-2018

Acrylic Paint on Archival Pigment Print on Paper

94 x 125 cm Framed

\$ 15,000

Restricted Images: Selections from REVISIONS

Warlukurlangu Artists in collaboration with Patrick Waterhouse

22 NOV - 13 DEC 2025

2



Patrick Waterhouse

Waiting Playing. Jarra. Restricted with Cecily Napanangka Marshall, 2014-2018

Acrylic Paint on Archival Pigment Print on Paper

46 x 36 cm Framed

\$ 4,500

Restricted Images: Selections from REVISIONS

Warlukurlangu Artists in collaboration with Patrick Waterhouse

22 NOV - 13 DEC 2025

3



Patrick Waterhouse

That Way. Restricted with Sarah Napurrurla Leo, 2014-2018

Acrylic Paint on Archival Pigment Print on Paper

46 x 36 cm

\$ 4,500

Restricted Images: Selections from REVISIONS

Warlukurlangu Artists in collaboration with Patrick Waterhouse

22 NOV - 13 DEC 2025

4



Patrick Waterhouse

No Iguana Only Bush Peas. Jinta. Restricted with Sarah Napurrurla Leo, 2014-2018

Acrylic Paint on Archival Pigment Print

89 x 124 cm Framed

\$ 14,000

Restricted Images: Selections from REVISIONS

Warlukurlangu Artists in collaboration with Patrick Waterhouse

22 NOV - 13 DEC 2025

5



Patrick Waterhouse

Follow. Jinta. Restricted with Hazel Nungarrayi Morris, 2014-2018

Acrylic Paint on Archival Pigment Print on Paper

46 x 36 cm Framed

\$ 4,500

Restricted Images: Selections from REVISIONS

Warlukurlangu Artists in collaboration with Patrick Waterhouse

22 NOV - 13 DEC 2025

6



Patrick Waterhouse

My House For All People. Jarra, Restricted with Ruth Nungarrayi Spencer, 2014-2018

Acrylic Paint on Archival Pigment Print on Paper

46 x 36 cm Framed

\$ 4,500

Restricted Images: Selections from REVISIONS

Warlukurlangu Artists in collaboration with Patrick Waterhouse

22 NOV - 13 DEC 2025

7



Patrick Waterhouse

Get Firewood That Way. Restricted with Dorothy Napurrurla Dickson, 2014-2018

Acrylic Paint on Archival Pigment Print on Paper

46 x 36 cm Framed

\$ 4,500

Restricted Images: Selections from REVISIONS

Warlukurlangu Artists in collaboration with Patrick Waterhouse

22 NOV - 13 DEC 2025

8



Patrick Waterhouse

Look This Way. Jarra. Restricted with Jessica Napanangka Lewis, 2014-2018

Acrylic Paint on Archival Pigment Print

46 x 36 cm Framed

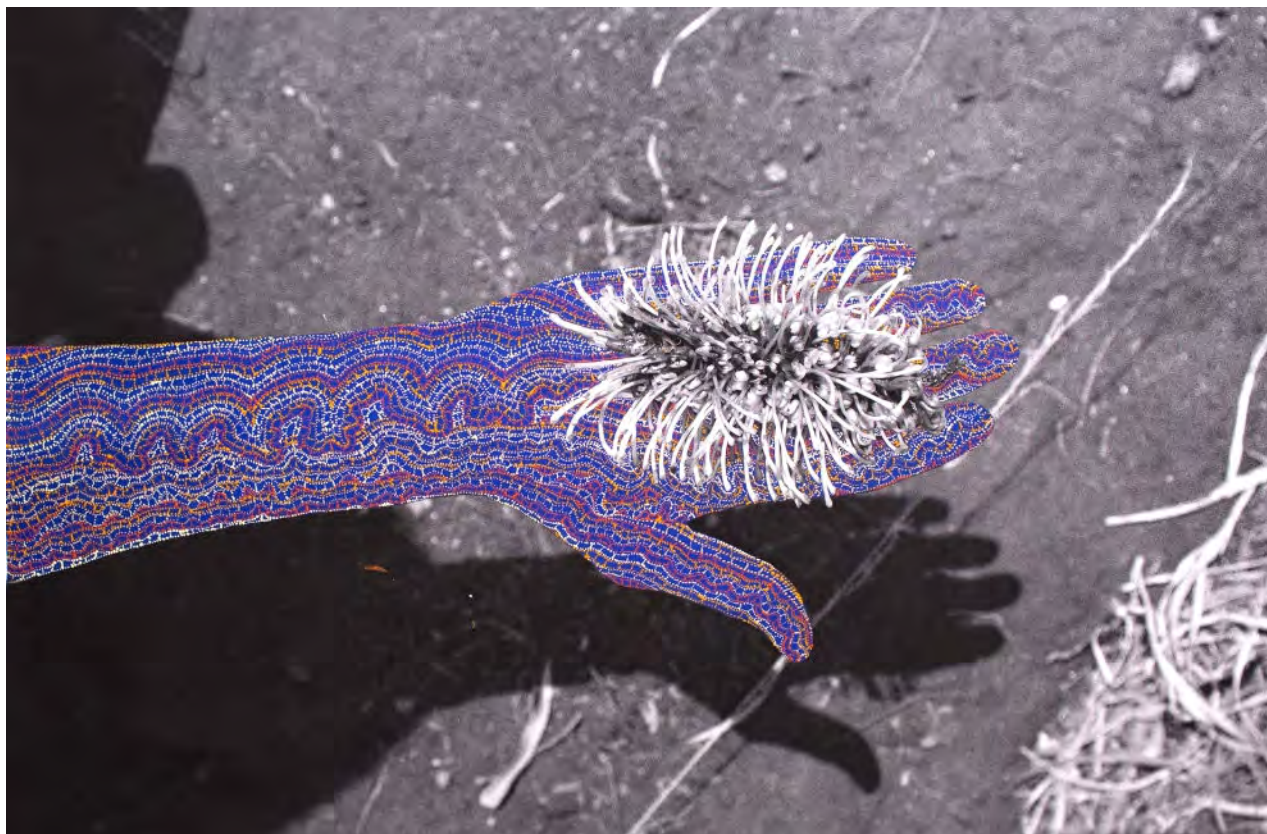
\$ 4,500

Restricted Images: Selections from REVISIONS

Warlukurlangu Artists in collaboration with Patrick Waterhouse

22 NOV - 13 DEC 2025

9



Patrick Waterhouse

Sweet One. Jarra. Restricted Sabrina Nangala Robertson, 2014-2018

Acrylic Paint on Archival Pigment Print on Paper

124 x 173 cm Framed

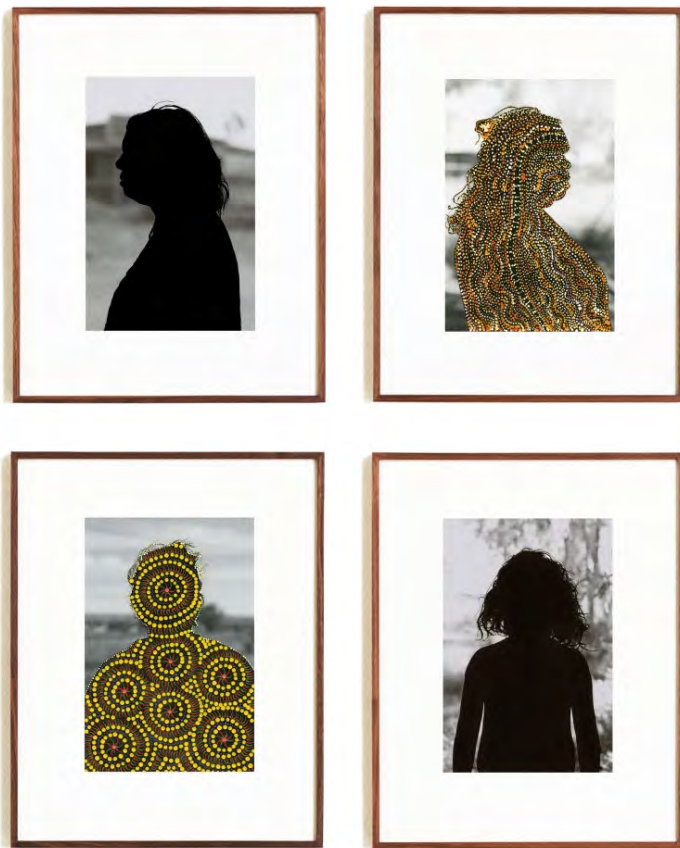
\$ 20,000

Restricted Images: Selections from REVISIONS

Warlukurlangu Artists in collaboration with Patrick Waterhouse

22 NOV - 13 DEC 2025

10



Patrick Waterhouse

Front and Sides. Set Two., 2014-2018

Acrylic Paint on Archival Pigment Print on Paper

46 x 35 cm Framed each

\$ 14,000

Restricted Images: Selections from REVISIONS

Warlukurlangu Artists in collaboration with Patrick Waterhouse

22 NOV - 13 DEC 2025

11



Patrick Waterhouse

Front and Sides. Set Four., 2014-2018

Acrylic Paint on Archival Pigment Print on Paper

46 x 35 cm Framed each

\$ 14,000

Restricted Images: Selections from REVISIONS

Warlukurlangu Artists in collaboration with Patrick Waterhouse

22 NOV - 13 DEC 2025

12



Patrick Waterhouse

Front and Sides. Set Three., 2014-2018

Acrylic Paint on Archival Pigment Print on Paper

46 x 35 cm Framed each

\$ 14,000

Restricted Images: Selections from REVISIONS

Warlukurlangu Artists in collaboration with Patrick Waterhouse

22 NOV - 13 DEC 2025

1
3



Patrick Waterhouse

Enough-Enough Picture. Restricted with Dorothy Napurrurla Dickson, 2014-2018

Acrylic Paint on Archival Pigment Print on Paper

47 x 62 cm Framed

\$ 6,700

Restricted Images: Selections from REVISIONS

Warlukurlangu Artists in collaboration with Patrick Waterhouse

22 NOV - 13 DEC 2025

14



Patrick Waterhouse

Whiskey's Far Away. Jinta. Restricted with Margaret Lewis Napangardi, 2014-2018

Acrylic Paint on Archival Pigment Print on Paper

107 x 89 cm Framed

\$ 13,500

Restricted Images: Selections from REVISIONS

Warlukurlangu Artists in collaboration with Patrick Waterhouse

22 NOV - 13 DEC 2025

1
5



Patrick Waterhouse

Sit down time. Restricted with Daniel Jupurrurla Gordon, 2014-2015

Acrylic Paint on Archival Pigment Print on Paper

67 x 80 cm Framed

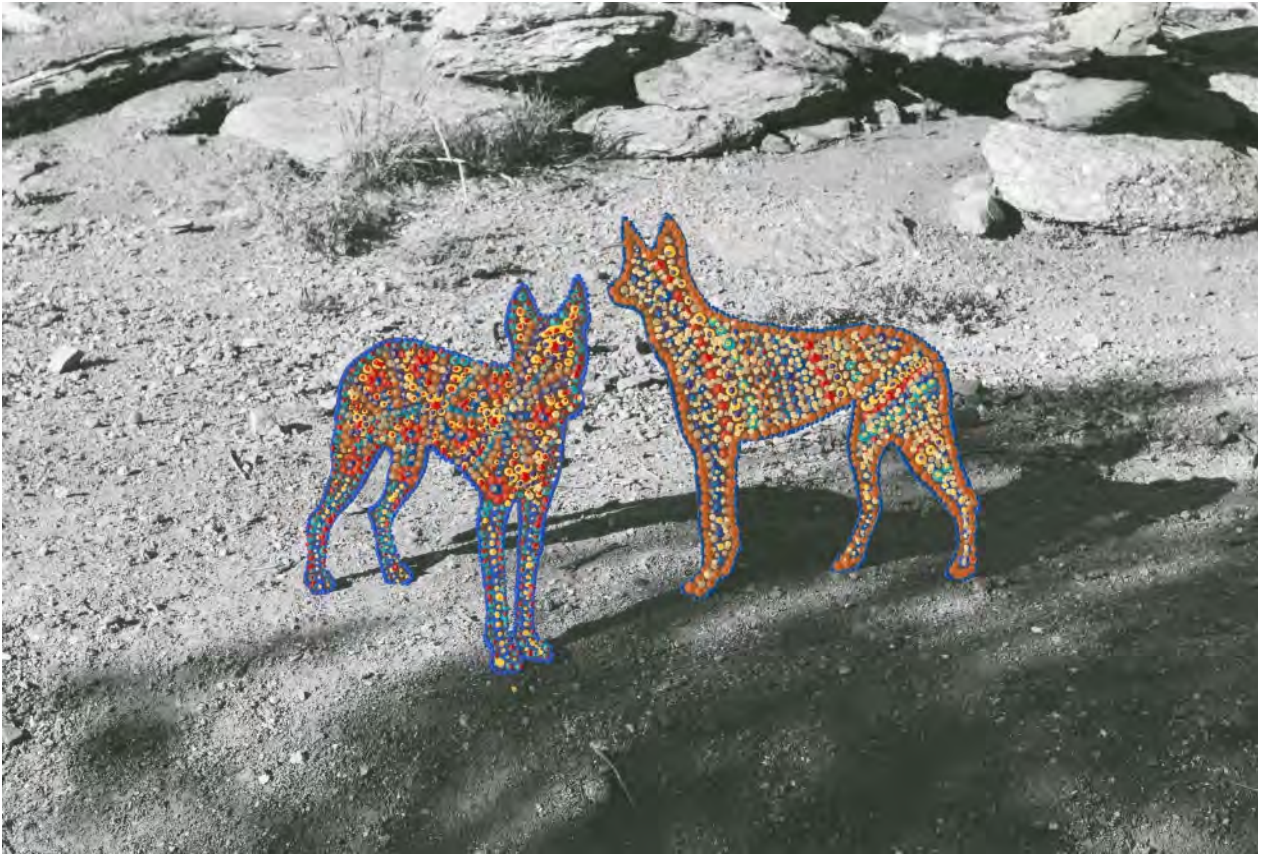
\$ 5,000

Restricted Images: Selections from REVISIONS

Warlukurlangu Artists in collaboration with Patrick Waterhouse

22 NOV - 13 DEC 2025

1
6



Patrick Waterhouse

Two Dingos. Restricted with Gloria Napangardi Gill, 2014-2018

Acrylic Paint on Archival Pigment Print on Paper

41 x 53 cm Framed

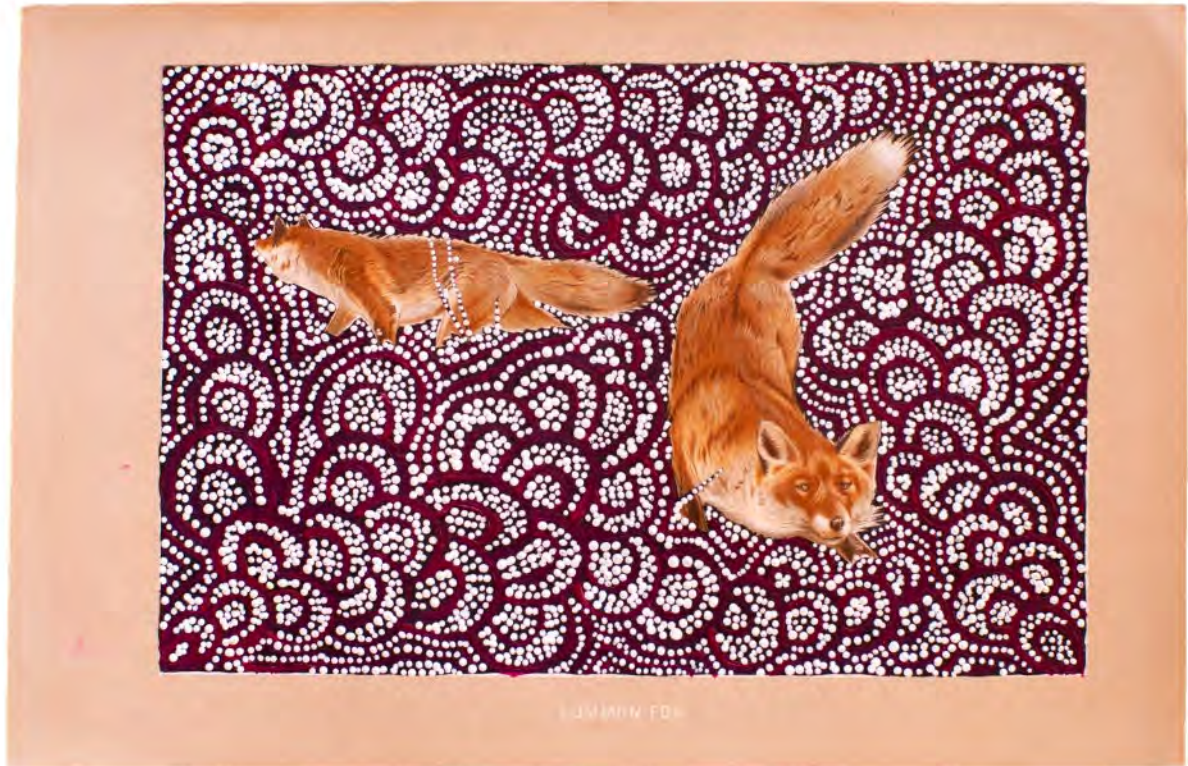
\$ 4,500

Restricted Images: Selections from REVISIONS

Warlukurlangu Artists in collaboration with Patrick Waterhouse

22 NOV - 13 DEC 2025

1
7



Patrick Waterhouse

Common Fox. Revised with Melinda Napurrurla Wilson, 2014-2018

Acrylic Paint on Original Offset Lithographic Print on Paper

32 x 37 cm Framed

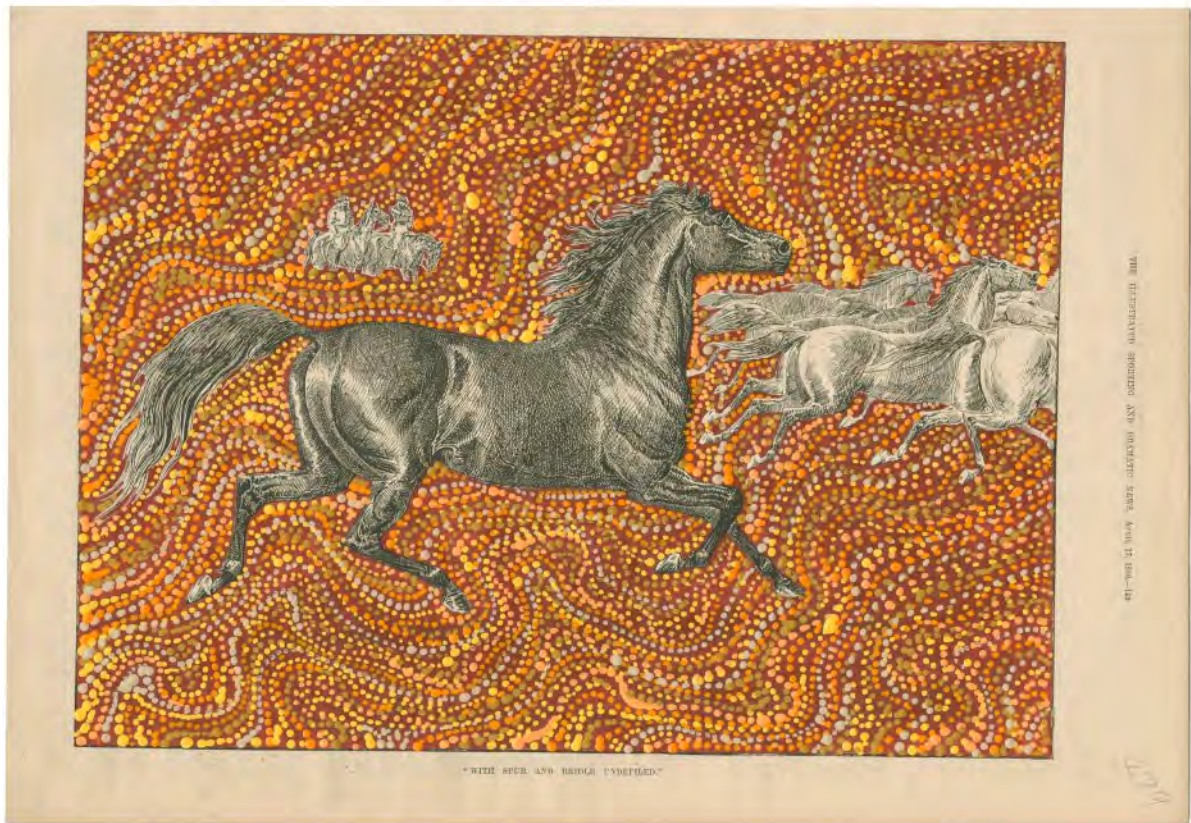
\$ 2,100

Restricted Images: Selections from REVISIONS

Warlukurlangu Artists in collaboration with Patrick Waterhouse

22 NOV - 13 DEC 2025

1
8



Patrick Waterhouse

With Spur and Bridle Undefined. Revised with Sabrina Nangala Robertson, 2014-2018

Acrylic Paint on Original Offset Lithographic Print on Paper

42 x 55 cm Framed

\$ 5,000

Restricted Images: Selections from REVISIONS

Warlukurlangu Artists in collaboration with Patrick Waterhouse

22 NOV - 13 DEC 2025

19



Patrick Waterhouse

Brush-tailed Phascogale from John Gould's Mammals of Australia. Revised with Hilda Nakamarra Rogers, 2014-2018

Acrylic Paint on Original Offset Lithographic Print on Paper

52 x 41 cm Framed

\$ 5,000

Restricted Images: Selections from REVISIONS

Warlukurlangu Artists in collaboration with Patrick Waterhouse

22 NOV - 13 DEC 2025

20



Patrick Waterhouse

Antecinus Swainsoni - (*Dusky antechinus*) Dusky Marsupial Mouse by John Gould. Revised with Melinda Napurrurla Wilson, 2014-2018

Acrylic Paint on Original Offset Lithographic Print on Paper

41 x 52 cm Framed

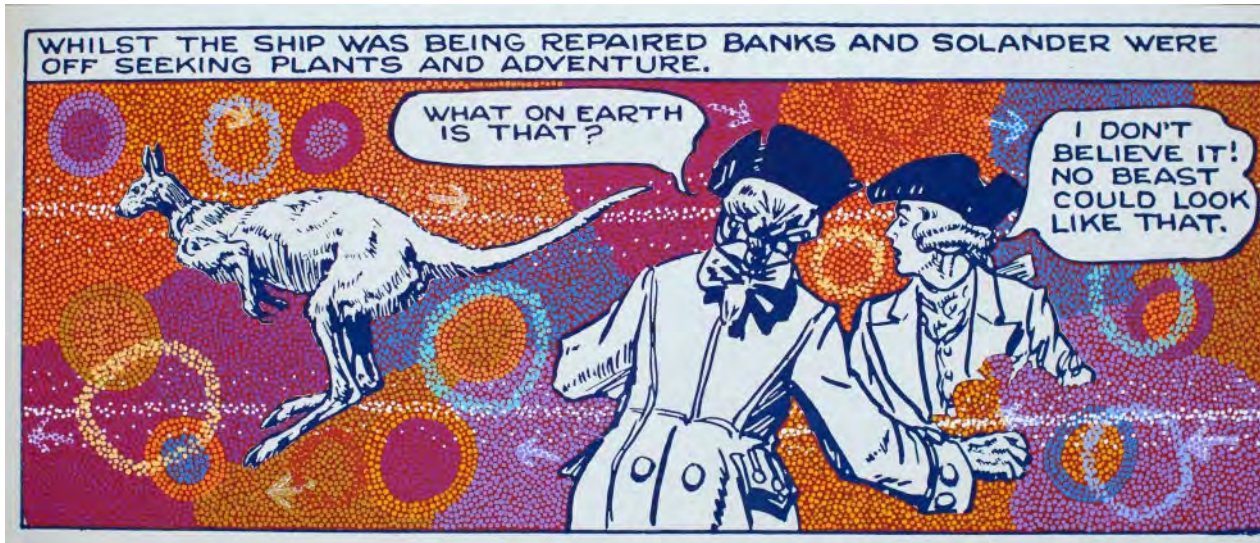
\$ 5,000

Restricted Images: Selections from REVISIONS

Warlukurlangu Artists in collaboration with Patrick Waterhouse

22 NOV - 13 DEC 2025

2
1



Patrick Waterhouse

I don't believe it. Revised with Pauline Nampijinpa Singleton, 2014-2022

Acrylic Paint on Archival Pigment Print on Paper

66 x 134 cm Framed

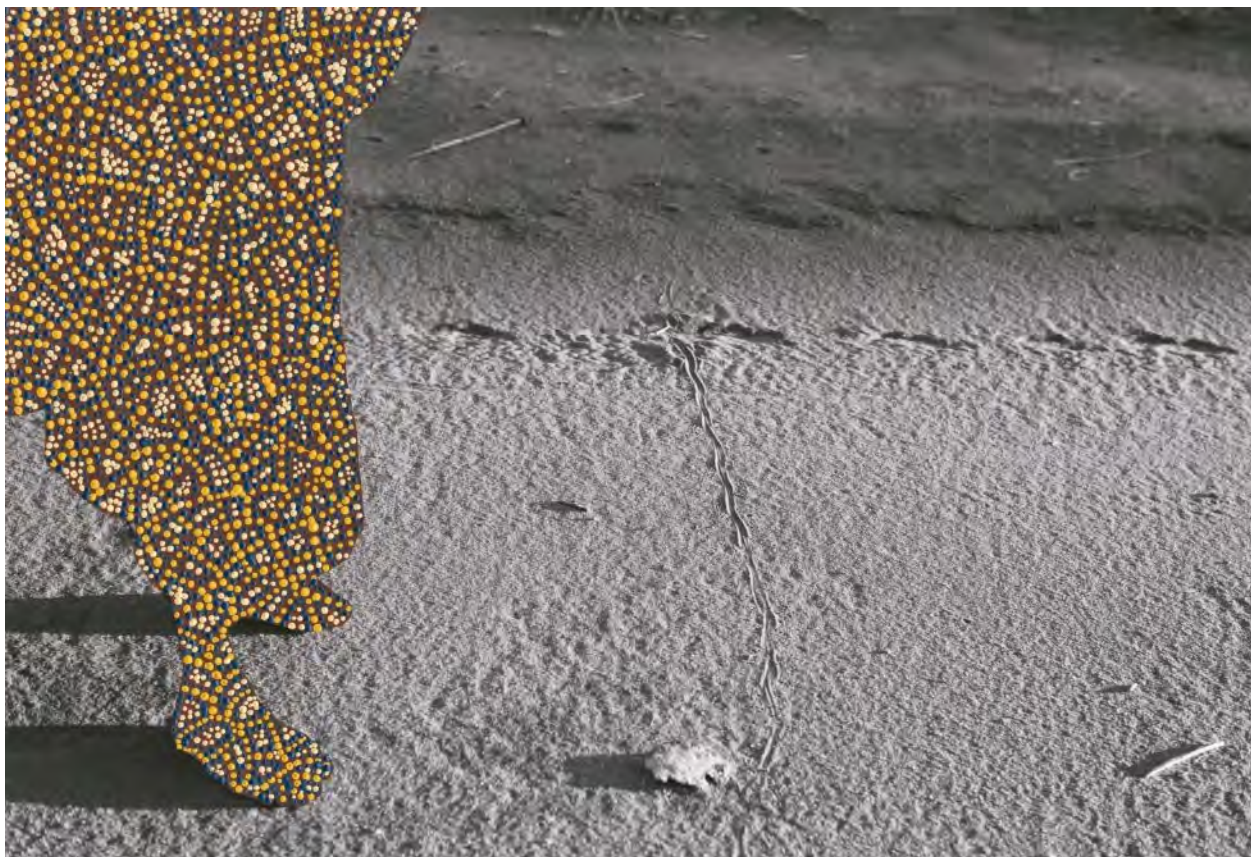
\$ 14,000

Restricted Images: Selections from REVISIONS

Warlukurlangu Artists in collaboration with Patrick Waterhouse

22 NOV - 13 DEC 2025

2
2



Patrick Waterhouse

He Went That Way. Jarra. Restricted with Melinda Napurrurla Wilson, 2014-2018

Acrylic Paint on Archival Pigment Print

36 x 46 cm Framed

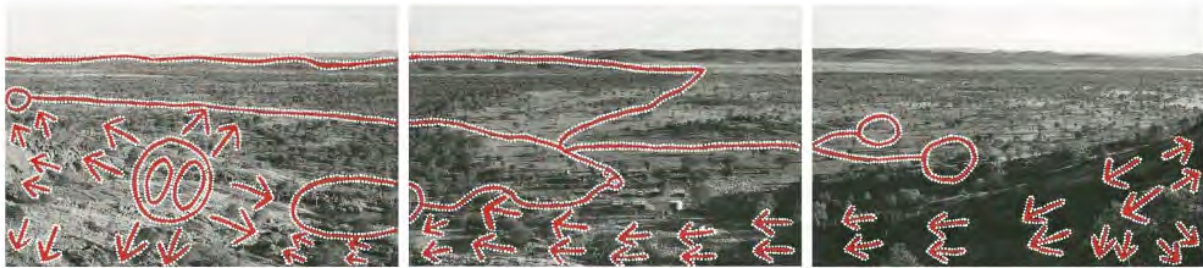
\$ 4,500

Restricted Images: Selections from REVISIONS

Warlukurlangu Artists in collaboration with Patrick Waterhouse

22 NOV - 13 DEC 2025

23



Patrick Waterhouse

Homelands. Restricted with Judith Nungarrayi Martin, 2014-2018

Acrylic Paint on Archival Pigment Print on Paper

53 x 72 cm Framed each

\$ 18,000

Restricted Images: Selections from REVISIONS

Warlukurlangu Artists in collaboration with Patrick Waterhouse

22 NOV - 13 DEC 2025

24



Patrick Waterhouse

The Westralian Red Ensign Flag, Revised with Sabrina NangalaRobertson, 2014-2022

Acrylic Paint on Fabric

69 x 133 cm

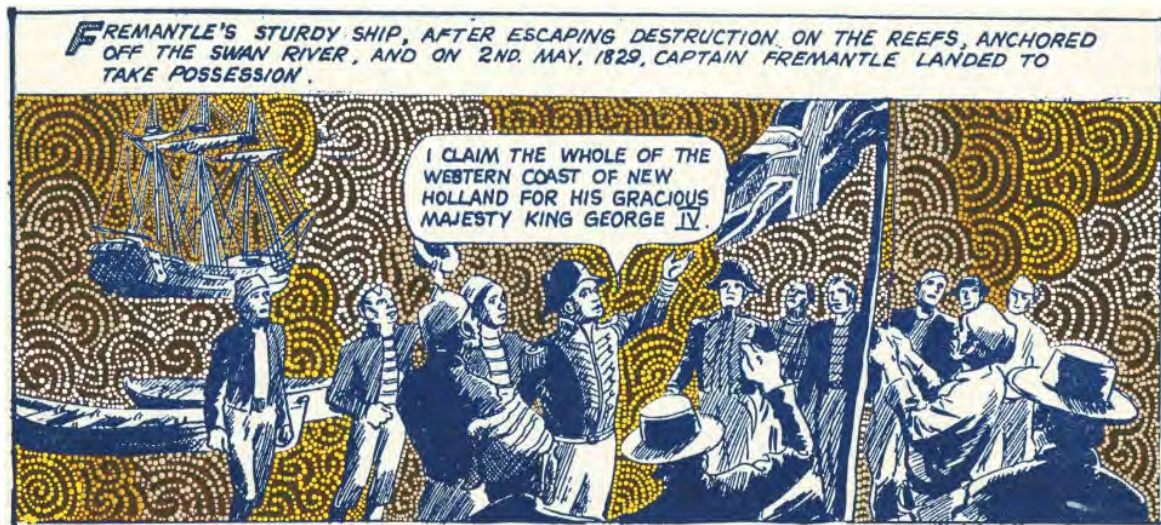
\$ 26,000

Restricted Images: Selections from REVISIONS

Warlukurlangu Artists in collaboration with Patrick Waterhouse

22 NOV - 13 DEC 2025

25



Patrick Waterhouse

I Claim The Whole of The Western Coast. Revised with Kirsty Anne Napanangka Brown, 2014-2018

Acrylic Paint on Archival Pigment Print on Paper

40 x 72 cm Framed

\$ 7,500