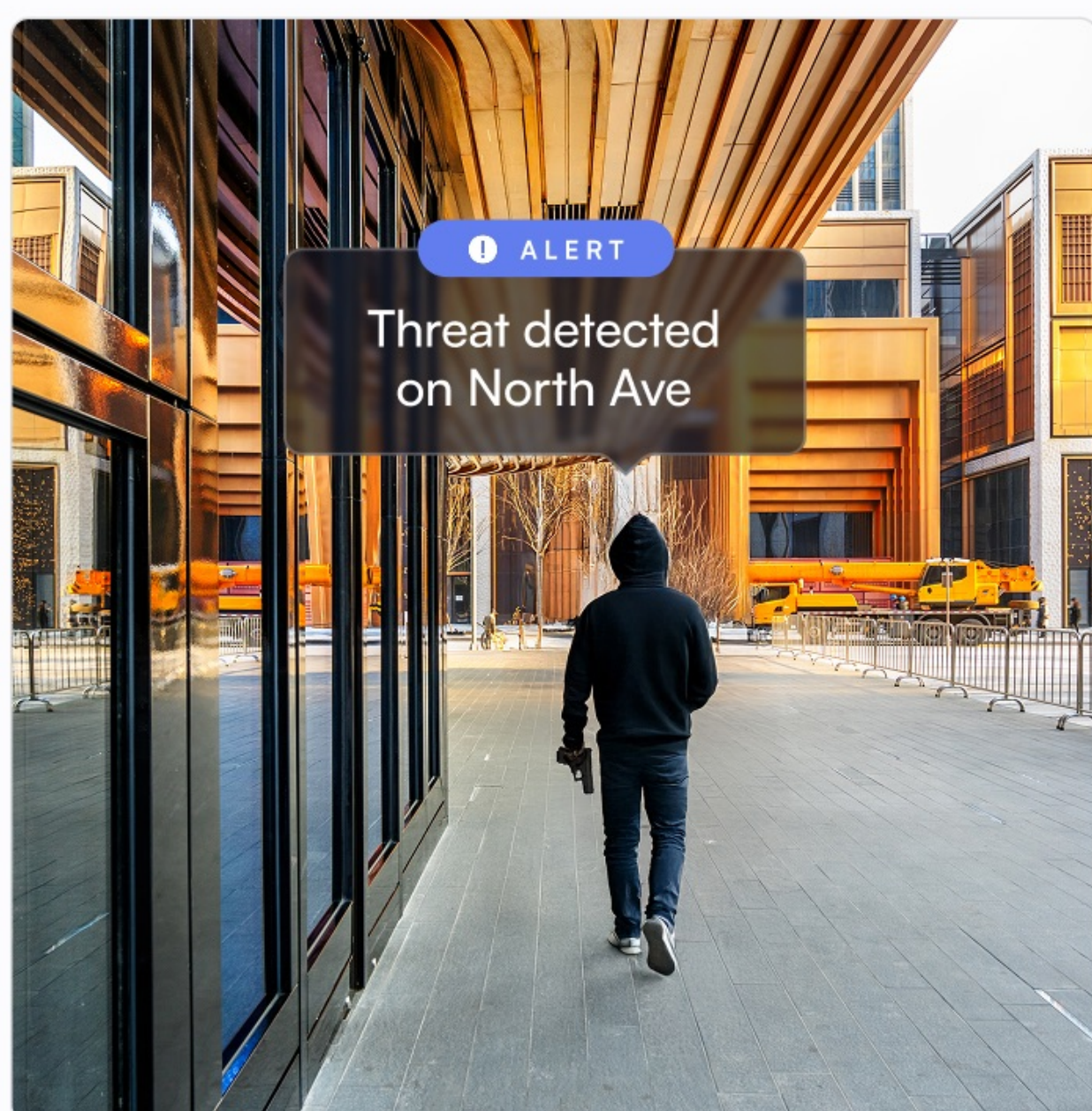
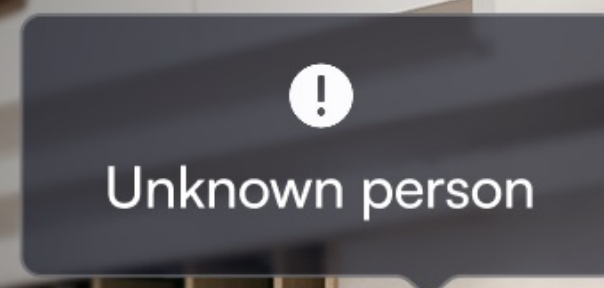




Transforming financial institutions and commercial properties with AI-powered solutions

In today's business environments, operational visibility and security are more critical than ever. At the heart of the latest property and asset protection innovation lies a surprisingly simple yet powerful tool — AI video security.

Banks, credit unions, and commercial property operators can gain real-time insights into security, visitor activity, compliance adherence, and operational trends by leveraging computer vision to generate AI-driven analysis. This document outlines three key use cases showcasing how Lumana's AI video security solution enhances safety, efficiency, and customer experience across financial institutions and commercial real estate portfolios.



Intelligent threat detection

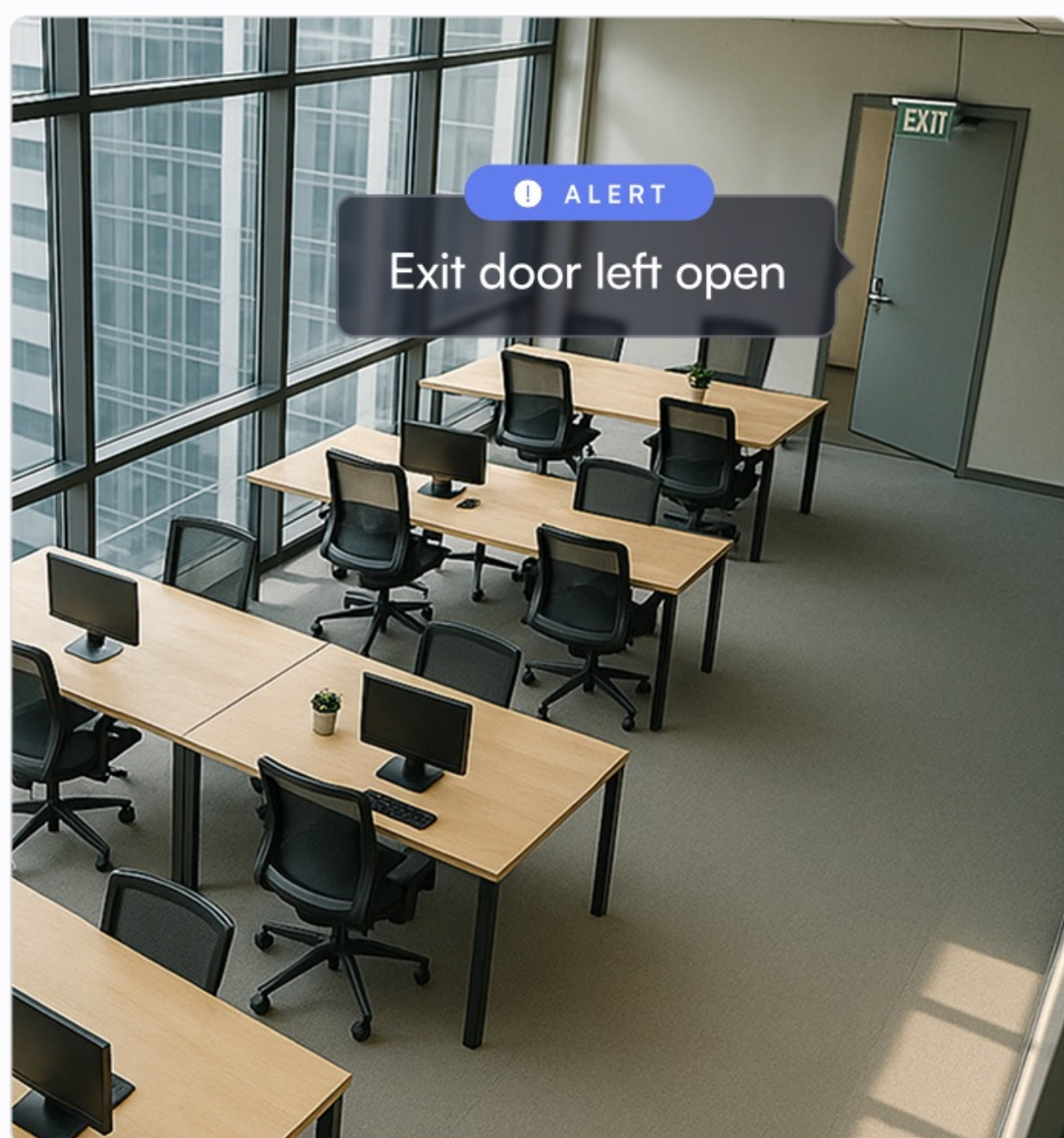
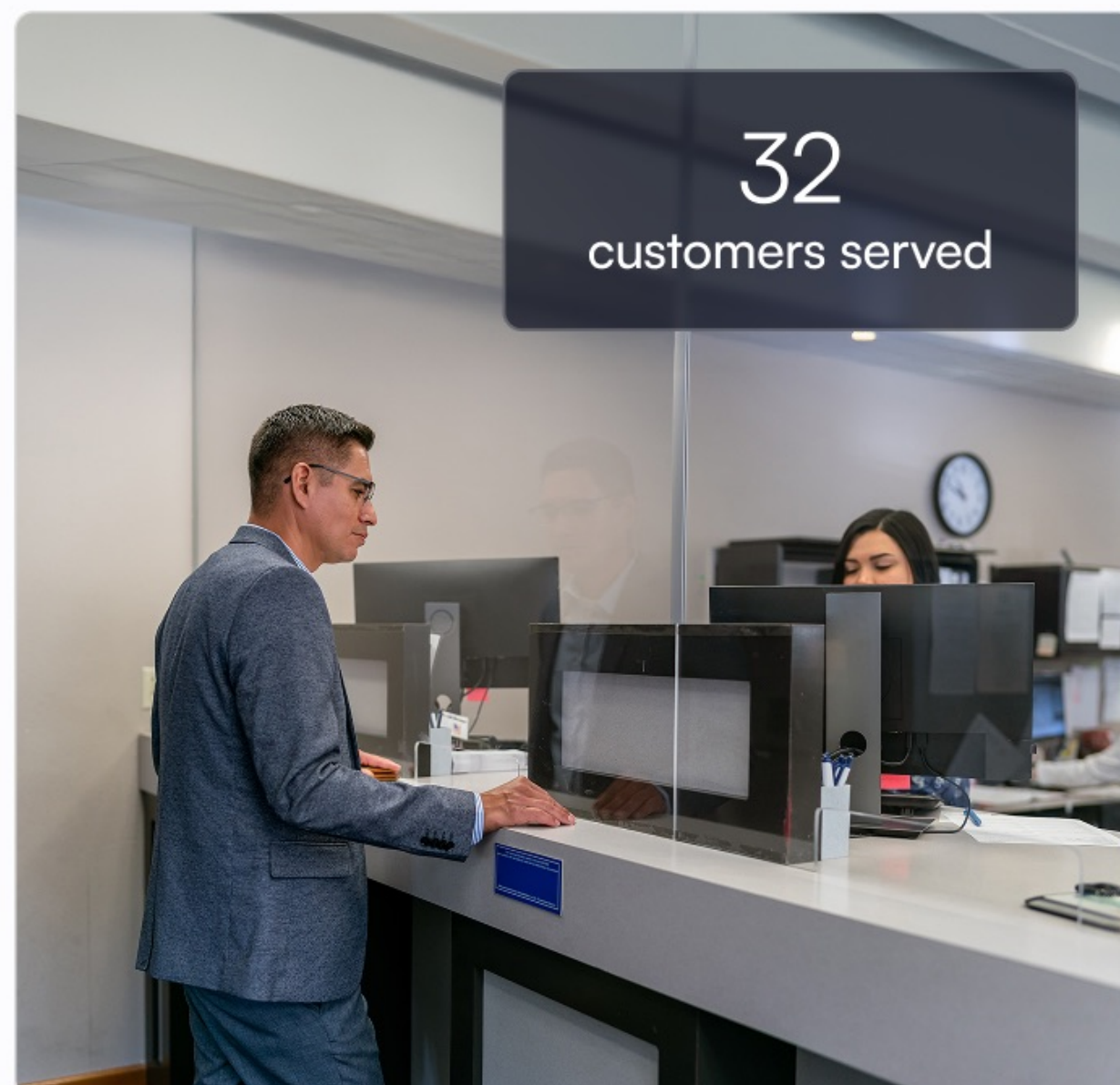
Lumana deploys specialized computer vision models to detect weapons and behavioral patterns associated with elevated risk. When a gun or suspicious behavior is identified, the system alerts your security team in real time, complete with visuals and precise location data. Automated workflows, such as audio alarms or access lockdowns, can be triggered instantly to de-escalate threats.

Beyond weapons, Lumana detects suspicious behaviors such as loitering in ATM vestibules, unauthorized access in restricted zones, tampering with building systems, and the presence of flagged individuals or untrusted vehicles. By transforming passive video into proactive monitoring, Lumana helps institutions move from reactive surveillance to real-time threat prevention, without requiring new camera infrastructure.

Occupancy & behavioral analytics

Imagine tailoring facility operations based on actual usage data, not assumptions. Lumana's AI analyzes how customers, tenants, and staff interact with your spaces, delivering real-time insight into foot traffic, occupancy trends, dwell times, and service flows.

Financial institutions can track patterns across teller lines, drive-thrus, and ATM areas to reduce wait times and optimize staffing. Property managers can analyze lobby and amenity usage to refine HVAC schedules, cleaning routines, and resource allocation. These insights are aggregated into intuitive dashboards with filters for time of day/week, weekly/monthly comparisons, and locations to enable smarter, data-backed decision making for business leaders.



Autonomous security monitoring

Lumana's AI continuously monitors every camera and notifies your team only when meaningful events occur. This eliminates the need for constant manual monitoring while increasing the effectiveness of your security operations.

The system identifies trespassing, violence/fighting, unauthorized access attempts, forced entry, door open, potential vandalism, suspicious persons/vehicles, crowd formation, tampering with security equipment, and more. Each detection triggers a pre-set response, such as real-time alert notifications, alarms, or lockdown protocols.

Lumana continuously learns from your environment, becoming more accurate and significantly reducing false positives compared to legacy video security systems. This frees up your security team to focus only on verified, high-priority events—effectively multiplying your security coverage without adding headcount.

Key benefits for financial institutions



SINGLE PANE OF GLASS

Unify physical security and operational analytics on one centralized platform.

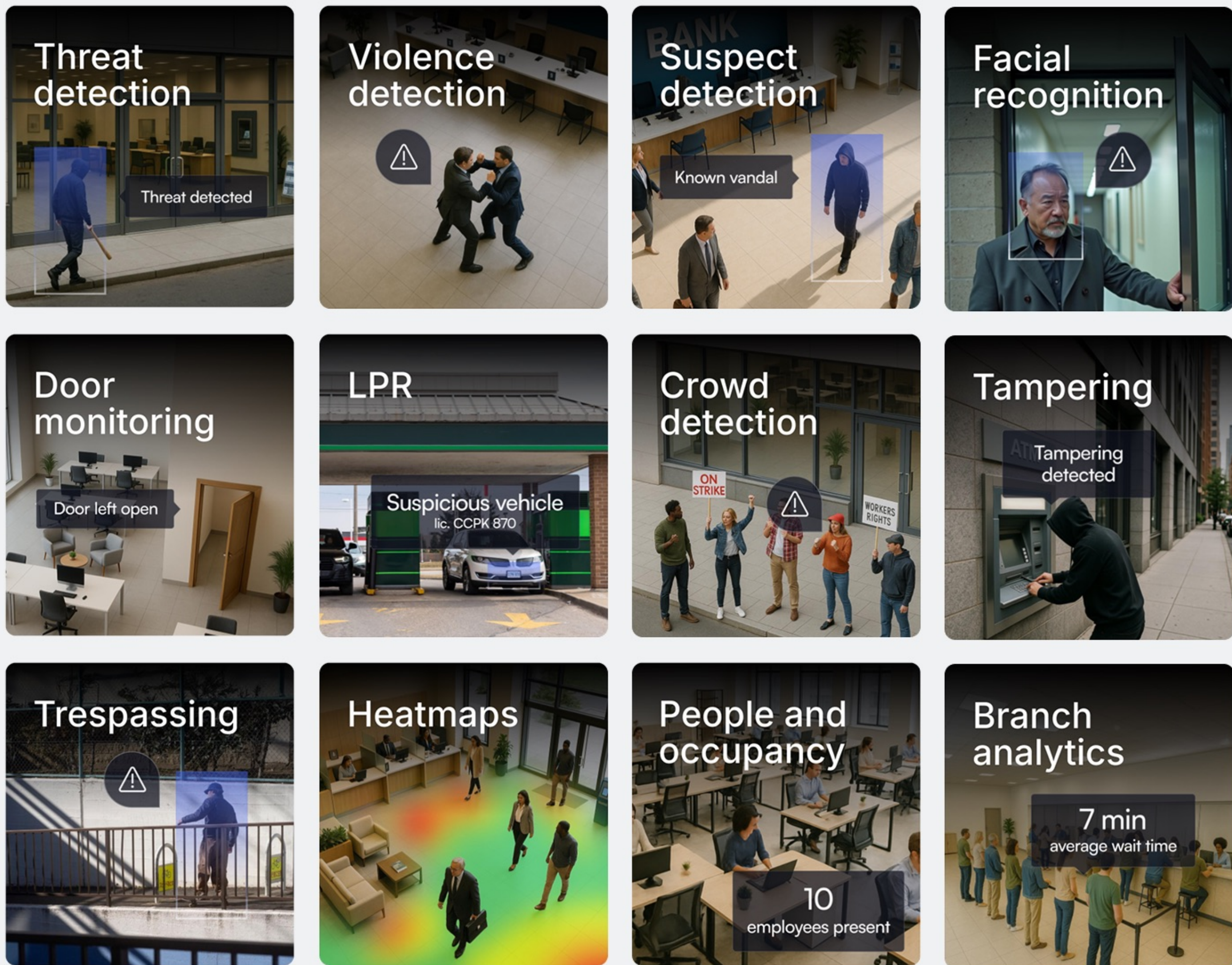


BRING AI TO YOUR SOC

Modernize your SOC with intelligent, real-time insights.

ADDITIONAL USE CASES

Security and operational efficiency



Final thoughts

AI is reshaping security and operations across financial institutions and commercial real estate, from proactively enhancing security to optimizing space utilization and improving regulatory oversight. The power lies in its simplicity—leveraging your existing camera infrastructure to unlock meaningful insights and automation.

If you're seeking a modern, scalable solution to elevate your security operations without major infrastructure changes, Lumana's AI video security is the smartest place to start.

