

July 2025

Katana



KEY HIGHLIGHTS

- Liquid trading strategy
- No lock-ups
- Performance based Fund Manager fee
- Manager is allocated alongside investors

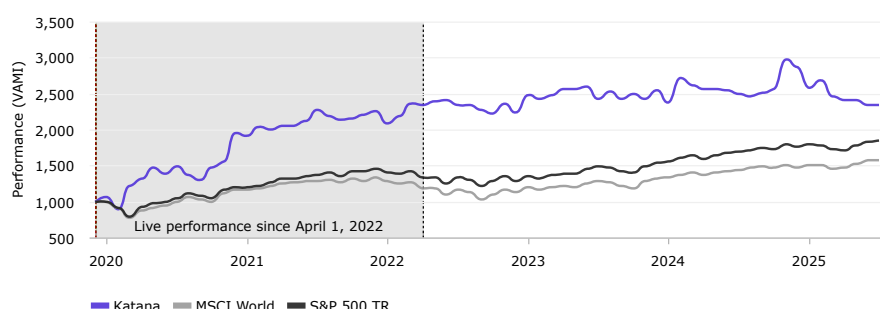
INVESTMENT STRATEGY

Katana - Named after the Japanese weapon that is sharp, powerful and bold, this product is geared for maximum returns, and integrates medium and high-risk strategies.

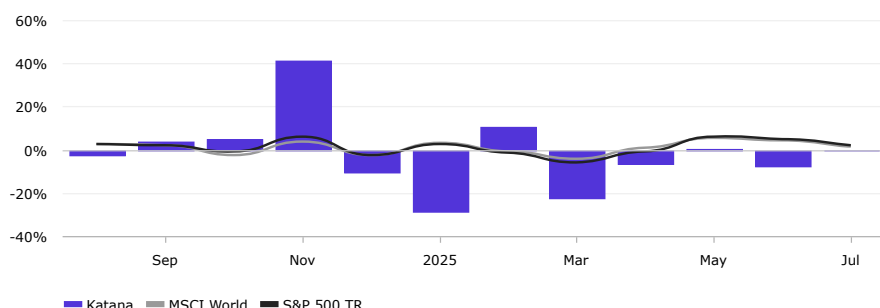
The core approach trades Bitcoin utilising a time tested and proven short term Trend following strategy that has an average trade duration of approximately 15 hours.

The return profile is not dependent on Bitcoin price appreciation and often generates significant profits when aggressive price moves occur in the crypto space. Katana is a valuable adjunct to any Investor's long BTC exposure and is expected to provide attractive risk adjusted returns on a standalone basis as well.

PERFORMANCE (VAMI)



MONTHLY RETURNS



FUND MANAGER

Cutting Edge Capital is a boutique investment manager formed to deploy a range of well researched algorithms into global financial markets. The team has significant experience in developing systematic trading strategies and creating efficient risk frameworks under which they operate. Specific focus is given to trading liquid markets that exhibit non-random price movements over timeframes from a few days up to several weeks.

PERFORMANCE

| 3M | YTD |
|-----------------|---------|
| -7.09% | -53.56% |
| Since Inception | Max DD |
| 133.42% | -63.77% |

GENERAL INFORMATION

| | |
|--------------------|----------------------|
| Company | Cutting Edge Capital |
| Minimum Investment | 50,000 AUD |
| Liquidity | Weekly |
| Management Fee | 1.50% |
| Performance Fee | 20.00% |
| Highwater Mark | Yes |

STATISTICS

| | |
|----------------------------|---------|
| Total Return Cumulative | 133.42% |
| Sharpe Ratio | 0.52 |
| Sortino Ratio | 0.54 |
| Winning Months (%) | 53.73% |
| Correlation vs. MSCI World | 0.15 |

MONTHLY PERFORMANCE

| | Jan | Feb | Mar | Apr | May | Jun | Jul | Aug | Sep | Oct | Nov | Dec | Year |
|------|--------|--------|--------|-------|-------|-------|--------|--------|--------|-------|-------|--------|--------|
| 2025 | -28.66 | 10.69 | -22.22 | -6.26 | 0.31 | -7.13 | -0.26 | | | | | | -53.56 |
| 2024 | -16.54 | 32.81 | -9.23 | -5.43 | -0.12 | -1.57 | -5.31 | -2.37 | 3.78 | 5.10 | 41.51 | -10.21 | 32.38 |
| 2023 | 24.31 | -5.53 | 4.54 | 8.97 | 0.04 | 2.98 | -16.37 | 10.44 | -10.69 | 6.62 | -6.21 | 11.94 | 31.01 |
| 2022 | -16.78 | 9.81 | 18.43 | -2.42 | 4.97 | 2.17 | -7.68 | 1.09 | -7.90 | -3.86 | 13.07 | -12.26 | -1.39 |
| 2021 | -4.38 | 13.12 | -3.93 | 4.35 | 1.25 | 6.96 | 14.39 | -8.87 | -4.15 | 1.78 | 5.25 | 3.85 | 29.60 |
| 2020 | 6.07 | -16.63 | 32.57 | 9.13 | 15.30 | -7.87 | 10.50 | -12.53 | -6.71 | 18.10 | 7.57 | 39.91 | 95.39 |

The returns above are net returns after transaction costs and fees. Returns prior to April 2022 are simulated or hypothetical.

This publication has been prepared on behalf of and issued by Cutting Edge Wholesale Pty Ltd (CAR 1297265 under AFSL 484609). This is not an offer to deal in any financial product. This information might contain unsolicited general information only, without regard to any investor's individual objectives, financial situation or needs. It is not specific advice for any particular investor. Before making any decision about the information provided, you must consider the appropriateness of the information in this document, having regard to your objectives, financial situation and needs and consult your adviser. This may not be passed on to anyone but the addressee. Past performance of financial products is no assurance of future performance.