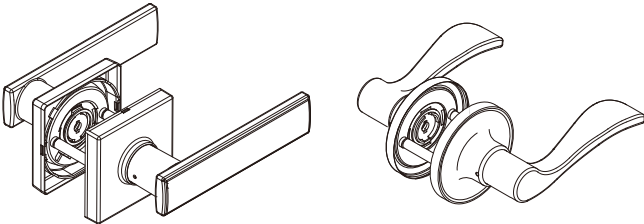




USE AND CARE GUIDE

1 FOR



2 Safety Information

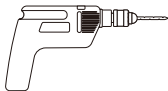
Read the precautions and instructions in this manual before installing and using this lock. Save this manual for future reference.

WARNING:
If the door needs to be drilled, be familiar with how to use your drill safely, and understand all the door preparation steps before proceeding.

CAUTION:
Before beginning the installation, please read and understand the entire manual.


NOTE:
To ensure a long lasting finish, remove the locks, or do not install the locks, prior to painting your door. Periodically clean the locks with mild soap and a soft cloth. Do not use abrasives or harsh chemicals, and avoid sharp or scratching objects.

3 Pre-Installation —Tools Required/Hardware Included



Optional

Part	Description	Quantity
AA	Mounting Screws	2

 **Note:** Not to scale.



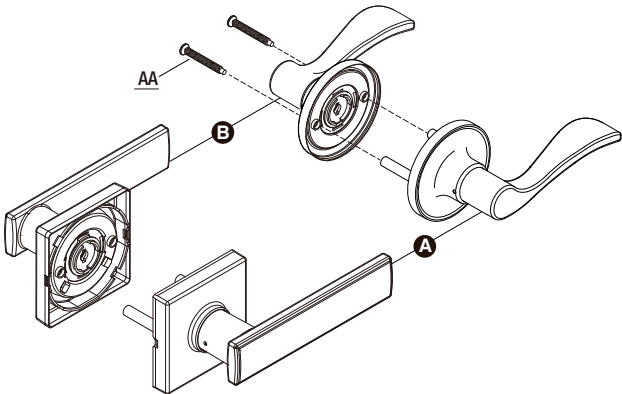
OR



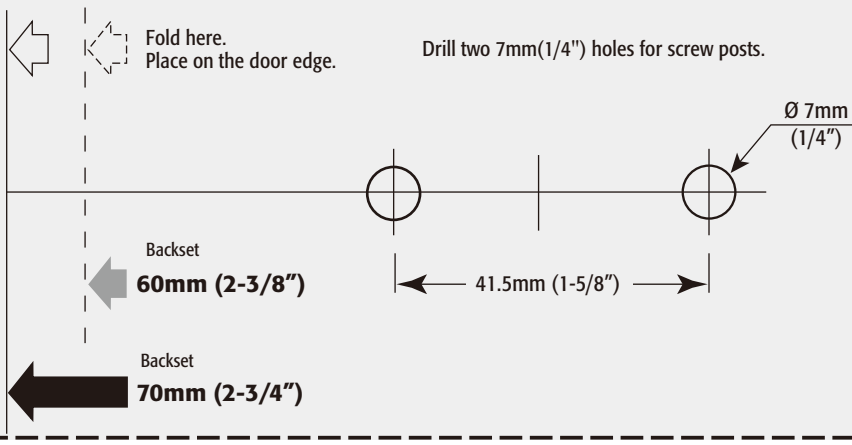
AA

Part	Description	Quantity
A	Exterior assembly	1
B	Interior assembly	1

FOR EXPOSED SCREWS



TEMPLATE



NOTE:
Double check your product for the correct hole sizes.

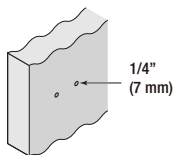
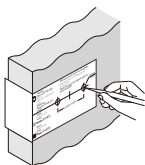


4 Pre-Installation (continued) — Door Preparation

NOTE: If your door already has holes, skip to Installation.

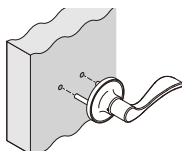
Using the template, mark the door and drill the holes.

NOTE: Drill from both sides to avoid wood splitting.



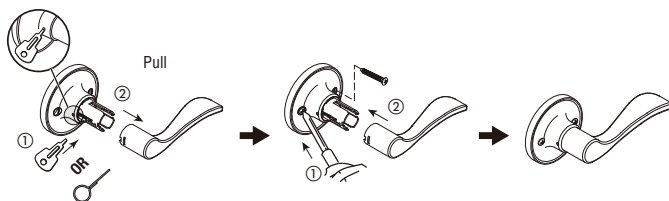
5 Installation

Exterior



Interior

For Exposed Screws



SWITCHING THE HANDLES (IF DESIRED)

NOTE: Levers installed in reverse will not affect the product's performance.

