



# TDC 90

GRADE 1 DOOR CLOSER



## **The TownSteel Promise**

We have built our company around the promise of creating durable hardware solutions for your projects. Our complete product line is the result of decades of determined engineering. This allows TownSteel to provide you with the right product to meet your exacting specifications. With end-to-end customer support, you will find that TownSteel is the ideal company for you to partner with. Check us out at [townsteel.com](https://townsteel.com) for more information!

TownSteel TDC 90 Series closers are designed for standard-duty applications. They are constructed of aluminum alloy and bring ANSI Grade 1 superior performance as all other TownSteel Grade 1 products. The TDC 90 closers offer high durability and flexibility needed to meet both commercial and institutional applications, including the ADA requirements.

# TDC 90



CONTENTS	PAGE
Features	4
Specifications	5
Finishes	6
Profile	6
Closer Body	7
Closer Dimensions	8
Mountings	9
Arms	10
Covers	11
How to Order	12

Cover and Table of Contents features TDC 90-AL-1 standard cover and arm tri-pack option in aluminum finish.

# Features

TDC 90 closers are designed for commercial and industrial high traffic applications, ideal for institutions, hospitals, schools as well as office buildings.



Features	Benefits
ANSI / BHMA A156.4	Grade 1 certified door closer
UL10C	UL 10C listed 3 hour fire rating
ADA compliant	Adjustable to meet requirements of the Americans with Disabilities Act
BAA compliant optional	BAA door closer meets guidelines of the Buy American Act
Non-handed	Able to use for both right hand and left hand doors
Adjustable backcheck and staked valves	Separate and adjustable latch, sweep, and backcheck valves (standard)
All weather fluid	Smooth movement in temperatures ranging from -13°F to 122°F (-25°C to 50°C)

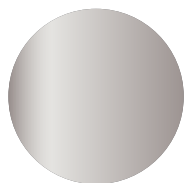
# Specifications

<b>Spring Power</b>	Fully adjustable sizes 2-5, barrier free BF-4 optional	
<b>Body</b>	Cast aluminum	
<b>Arm</b>	Regular arm, standard	
<b>Sweep and Latching Valves</b>	Latching speed	From approximately 2° - 15° to full closing
	Sweeping speed	From full opening to within approximately 2°-15° of the closed position
<b>Backcheck Valves</b>	Starts at approximately 65° door opening and slows the door as it opens	
<b>Cover</b>	Full plastic cover, standard	
<b>Mountings</b>	Regular	
	Top jamb	
	Parallel arm	
<b>Piston</b>	1-13/32" diameter	
<b>Rack and Pinion</b>	5/8" pinion diameter	
<b>Projection</b>	3" projection on standard cover	
<b>Max. Degree of Opening</b>	Regular arm: 180°	

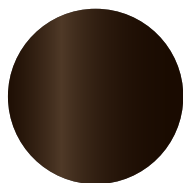
---

# Finishes

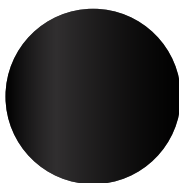
---



**Aluminum**  
(AL)



**Duronodic**  
(DU)



**Flat Black**  
(BLK)

Other finishes available upon request

Finishes are for illustration only and may vary from actual product provided

---

# Profile

---

LATCH SPEED  
CONTROL  
(STANDARD)

CLOSING SPEED  
CONTROL  
(STANDARD)

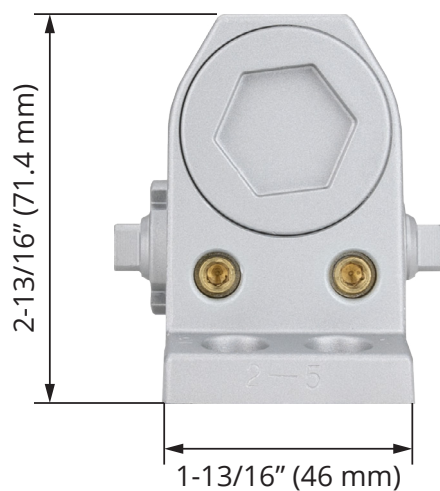
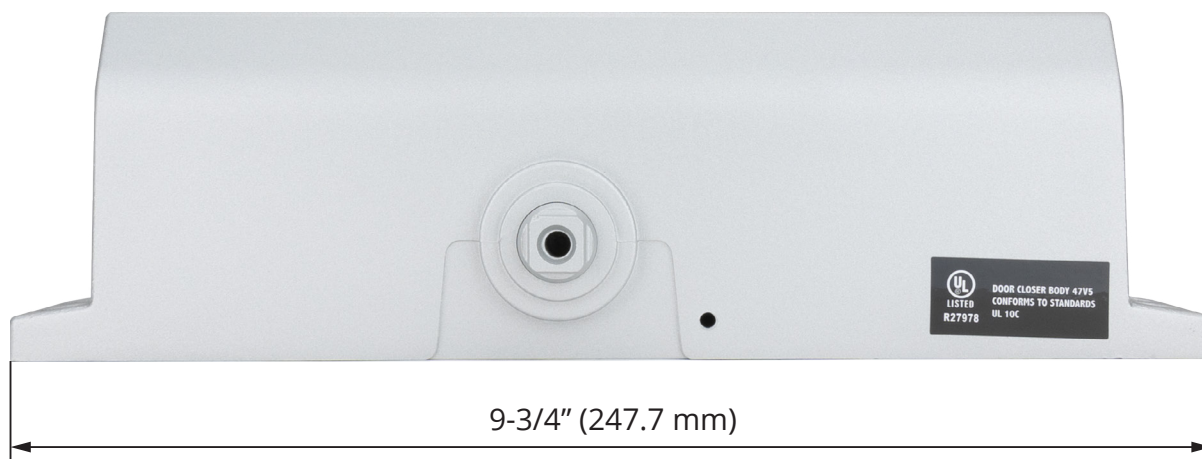
HEAVY DUTY CAST  
ALUMINUM BODY

SPRING POWER  
ADJUSTMENT  
SIZE 2 THRU 5

BACKCHECK  
CONTROL  
(STANDARD)

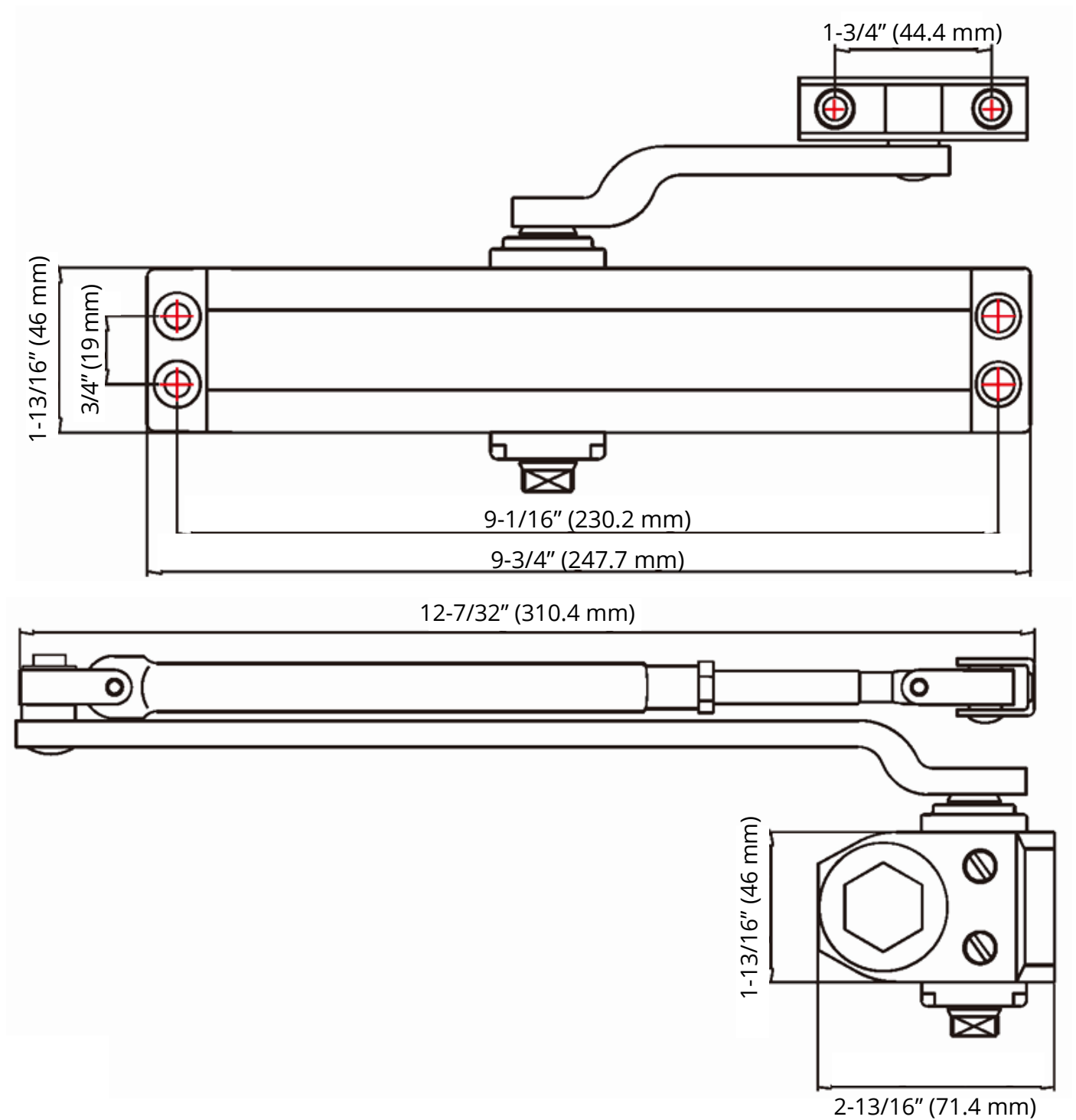


# Closer Body



TDC 90-1 closer body shown

# Closer Dimensions



TDC 85-1 closer dimensions shown



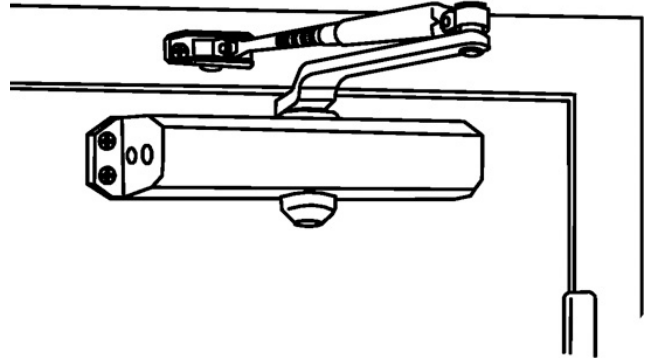
---

# Mountings

---

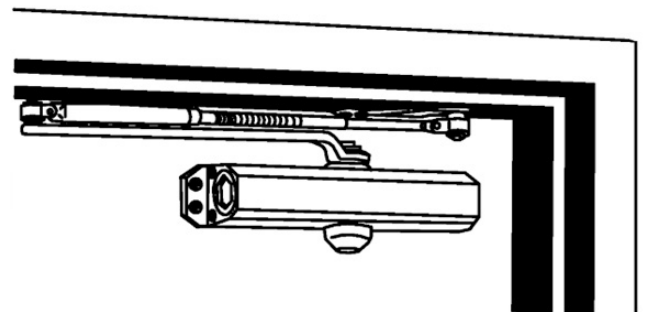
## Regular Arm Mounting

- Pull Side
- Left Hand Shown



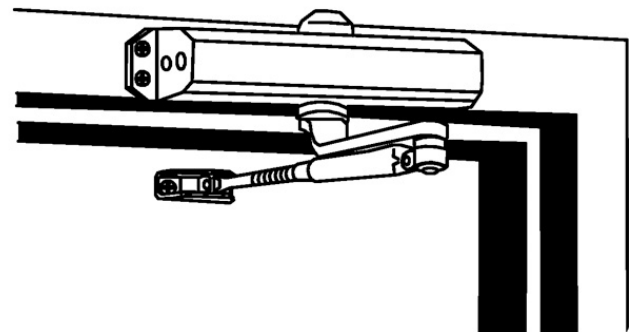
## Parallel Arm Mounting

- Push Side
- Right Hand Shown



## Top Jamb Mounting

- Push Side
- Right Hand Shown



---

# Arms

---

## **TDC 90 Standard Arm**

Heavy duty standard arm



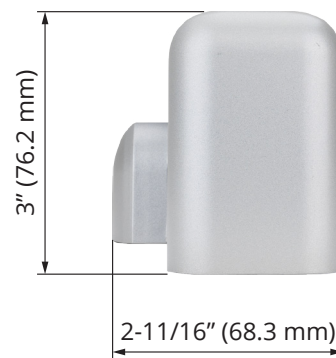
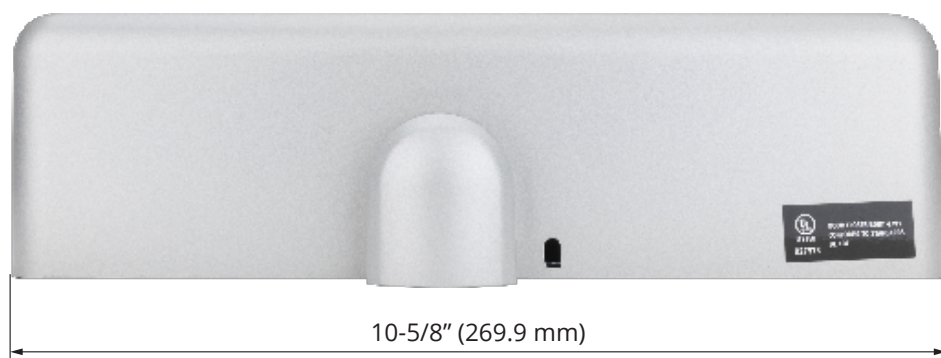
# Covers

## TDC 90: Plastic Cover

Plastic cover, available in Aluminum, Duronodic, and Flat Black finish.



## DIMENSIONS



# How to Order - Complete Closer

## TDC 90 Door Closer

### Series

TDC 90	TDC 90 door closer
--------	--------------------

### Cylinder

Blank	Regular (standard) cylinder
BF	Barrier free

### Finishes

AL	Aluminum
DU	Duronodic
BLK	Flat Black

### Buy American Act

Blank	Meets the requirements of the Buy American Act
-1	Does not meet the requirements of the Buy American Act

Pick one item from each category when ordering.

**Example order: TDC 90-BF-AL-1**

---

# Important Note

---

## **Door Closers for Low Opening Force Applications**

Door closers that are installed in openings that must meet the requirements of the Americans with Disabilities Act (ADA) ANSI Standard A117.1, when adjusted to meet those requirements, may not provide adequate closing power to reliably close and latch the door.



17901 Railroad Street  
City of Industry, CA  
91748

877-858-0888  
[info@townsteel.com](mailto:info@townsteel.com)

[townsteel.com](http://townsteel.com)