

ED1100/EF1100

GRADE 1 HEAVY DUTY RIM EXIT DEVICE



The TownSteel Promise

We have built our company around the promise of creating durable hardware solutions for your projects. Our complete product line is the result of decades of determined engineering. This allows TownSteel to provide you with the right product to meet your exacting specifications. With end-to-end customer support, you will find that TownSteel is the ideal company for you to partner with. Check us out at townsteel.com for more information!

ED1100/EF1100 Series is a wide stile heavy-duty grade 1 rim exit device, fabricated and blended with simplicity, strength, durability, aesthetics and installer-friendly innovations. The universal center case is made of heavy wrought steel and sintered metal parts. The push bar assembly's smooth and reduced projection minimizes catch hazards. A full complement of exit trims is available in various types and functions.

ED1100
EF1100
RIM



CONTENTS	PAGE
Features	4
Specifications	5
Finishes	6
Exit Device Profile	7
Dimensions	8
Strikes	9
How to Order	11

Features

ED1100/EF1100 Series exit devices are made to comply with the highest safety and security standards in the industry. The ED1100/EF1100 series provides superior durability for heavy use applications such as schools, hospitals, assisted living facilities, banks, offices, hospitality, and other institutions or commercial buildings.

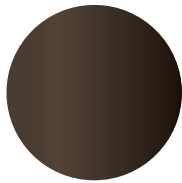


Features	Benefits
ANSI / BHMA A156.3	Grade 1 certified exit device
ANSI / UL 305	ANSI/UL 305 listed
UL10C	UL10(C) 3-hour fire rated (EF1100 only)
ADA compliant	Meets requirements of the Americans with Disabilities Act
BAA compliant	Meets guidelines of Buy American Act
All exit devices are non-handed or field reversible design	Allows for changing the handing without requiring new hardware
Shock-resistant latching design	Provides superior vandalism protection
All internal components made of corrosion-resistant alloy	Provides superior weather-resistance and durability

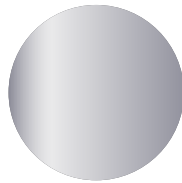
Specifications

Door Size	36", standard 48", optional
Door Thickness	1-3/4" - 2-1/4" *Others available upon request
Mounting Height	39-5/8" from device center line to finished floor
Handing	Non-handed
Push Bar Projection	Neutral: 3-13/16" Depressed: 3-1/16"
Latch Bolt	3/4" throw, stainless steel, deadlocking
Dogging	Flat/Hex key dogging, standard (ED1100 only) Cylinder dogging, optional (ED1100 only) Electrical dogging (ELR), optional Less dogging, optional

Finishes



Dark Oxidized Bronze
(613)

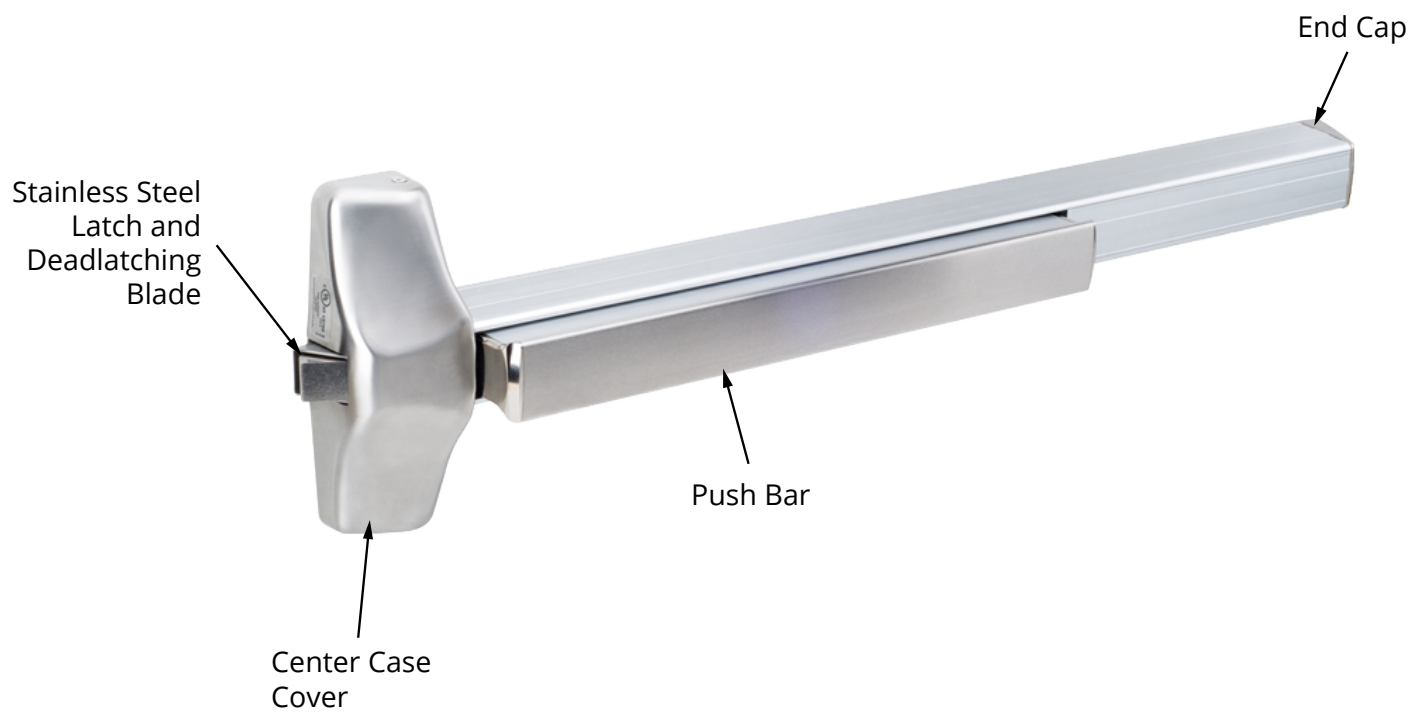


Satin Stainless Steel
(630)

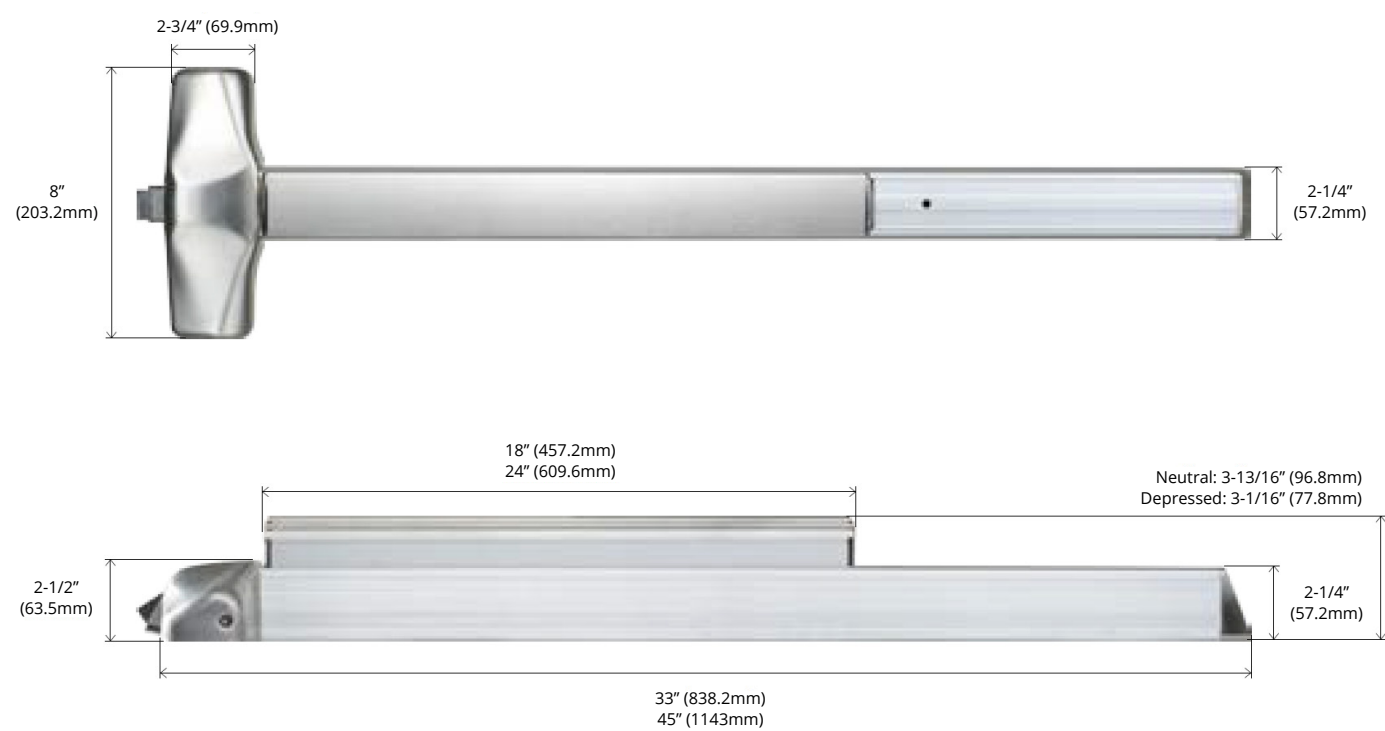
Other finishes available upon request

Finishes are for illustration only and may vary
from actual product provided

Exit Device Profile



Dimensions



Strikes

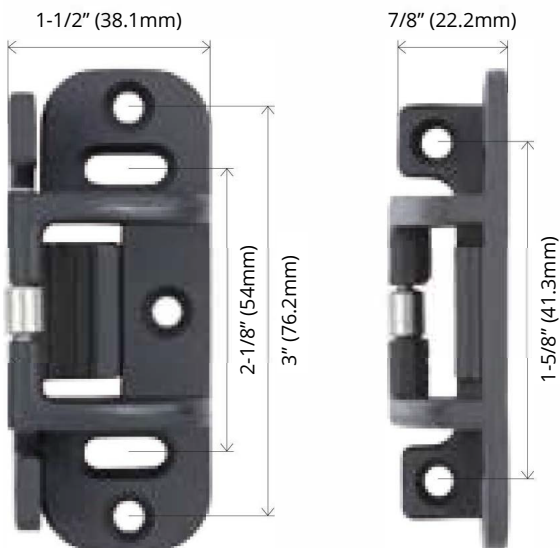
106 Rim Strike

Rim strike for Rim exit device.
For panic applications.



108 Rim Strike

Rim strike for fire or double door Rim exit device use with mullion.
For panic and fire applications.



Strikes

136 Rim Strike

Rim strike for double door Rim exit device in combination with a coordinator.
For panic and fire applications.



How to Order

ED1100/EF1100 Heavy Duty Rim Exit Device

Fire Rating

ED1100	Rim panic exit hardware
EF1100	Rim fire exit hardware

Device Size

36	36" (For doors 2'4"-3')
48	48" (For doors 2'10"-4')

Finish

613	Dark Oxidized Bronze
630	Satin Stainless Steel

Dogging

Blank	Flat/Hex key dogging (ED1100 only)
CD	Cylinder dogging (ED1100 only)
ED	Electric dogging (ELR)
LD	Less dogging

Options

Blank	Standard
AL	Alarm exit
DE	Delayed egress
ELR	Electric latch retraction

How to Order

ED1100/EF1100 Heavy Duty Rim Exit Device

Options (cont.)

LM	Latch bolt monitoring
RX	Request to exit
SS	Signal switch

Pick one item from each category when ordering.

Example order: ED1100-36-630-DE

How to Order

Strikes and Shim Kits

Strikes

ED 106 Rim Strike	Rim strike for Rim exit device. For panic applications.
ED 108 Rim Strike	Rim strike for fire or double door Rim exit device use with mullion. For panic and fire applications.
ED 136 Rim Strike	Rim strike for double door Rim exit device in combination with a coordinator. For panic and fire applications.

Shim Kits

616819-010	Standard shim kit for 106 Rim strike, 2 pieces furnished
616819-030	Standard shim kit for 108 Rim strike, 2 pieces furnished

Accessories

Accessories

8-1024 SNB	Sex bolts for Exit Only device (10-24 thread)
2-1024 SNB	Sex bolts for device with trim (10-24 thread)



17901 Railroad Street
City of Industry, CA
91748

877-858-0888
info@townsteel.com

townsteel.com