



# ED1500/EF1500

GRADE 1 HEAVY DUTY THREE-POINT LATCHING EXIT DEVICE



## **The TownSteel Promise**

We have built our company around the promise of creating durable hardware solutions for your projects. Our complete product line is the result of decades of determined engineering. This allows TownSteel to provide you with the right product to meet your exacting specifications. With end-to-end customer support, you will find that TownSteel is the ideal company for you to partner with. Check us out at [townsteel.com](https://townsteel.com) for more information!

ED1500/EF1500 Series is a wide stile heavy-duty grade 1 three-point exit device, fabricated and blended with simplicity, strength, durability, aesthetics and installer-friendly innovations. The center case is made of heavy wrought steel, with top and bottom rod adjusters. The push bar assembly's smooth and reduced projection minimizes catch hazards. A full complement of exit trims is available in various types and functions.

ED1500  
EF1500  
3PT



CONTENTS	PAGE
Features	4
Specifications	5
Finishes	6
Exit Device Profile	7
Dimensions	8
Strikes	9
How to Order	13

# Features

ED1500/EF1500 Series exit devices are made to comply with the highest safety and security standards in the industry. The ED1500/EF1500 series provides superior durability for heavy use applications such as schools, hospitals, assisted living facilities, banks, offices, hospitality, and other institutions or commercial buildings.



Features	Benefits
ANSI / BHMA A156.3	Grade 1 certified exit device
ANSI / UL 305	ANSI/UL 305 listed
UL10C	UL10(C) 3-hour fire rated (EF1500 only)
ADA compliant	Meets requirements of the Americans with Disabilities Act
BAA compliant	Meets guidelines of Buy American Act
All exit devices are non-handed or field reversible design	Allows for changing the handing without requiring new hardware
Shock-resistant latching design	Provides superior vandalism protection
All internal components made of corrosion-resistant alloy	Provides superior weather-resistance and durability

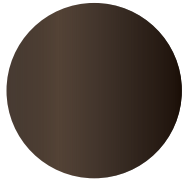
# Specifications

<b>Door Size</b>	36", standard 48", optional
<b>Door Thickness</b>	1-3/4" - 2-1/4" *Others available upon request
<b>Door Undercut</b>	1/4"
<b>Mounting Height</b>	39-5/8" from device center line to finished floor
<b>Handing</b>	Non-handed
<b>Push Bar Projection</b>	Neutral: 3-13/16" Depressed: 3-1/16"
<b>Top Latch Bolt</b>	5/8" throw, stainless steel, pullman type, deadlocking
<b>Bottom Bolt</b>	5/8" throw, stainless steel, pullman type, deadlocking, independent action Round slide bolt, optional
<b>Top and Bottom Latch Case</b>	4-1/2" x 2-1/8" x 1-1/2"
<b>Top Rod</b>	1/2" square tube, 36-1/8" for 7' door 1/2" square tube, 48-1/8" for 8' door
<b>Bottom Rod</b>	1/2" square tube, 31-7/8"
<b>Rod Extension</b>	Available 24" for doors ranging between 8' and 10' high
<b>Dogging</b>	Flat/Hex key dogging, standard (ED1500 only) Cylinder dogging, optional (ED1500 only) Electrical dogging (ELR), optional Less dogging, optional

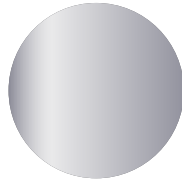
---

# Finishes

---



**Dark Oxidized Bronze**  
(613)

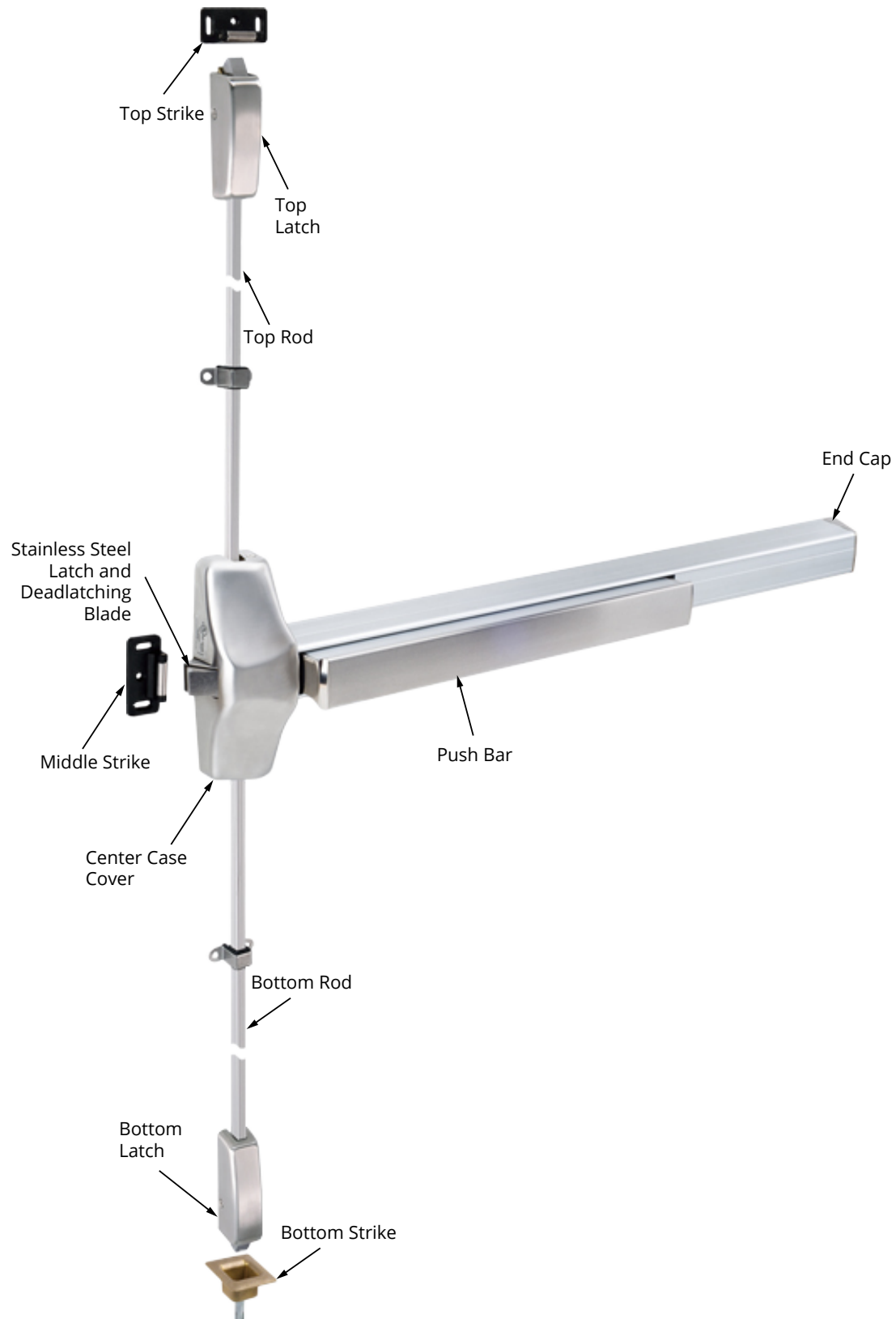


**Satin Stainless Steel**  
(630)

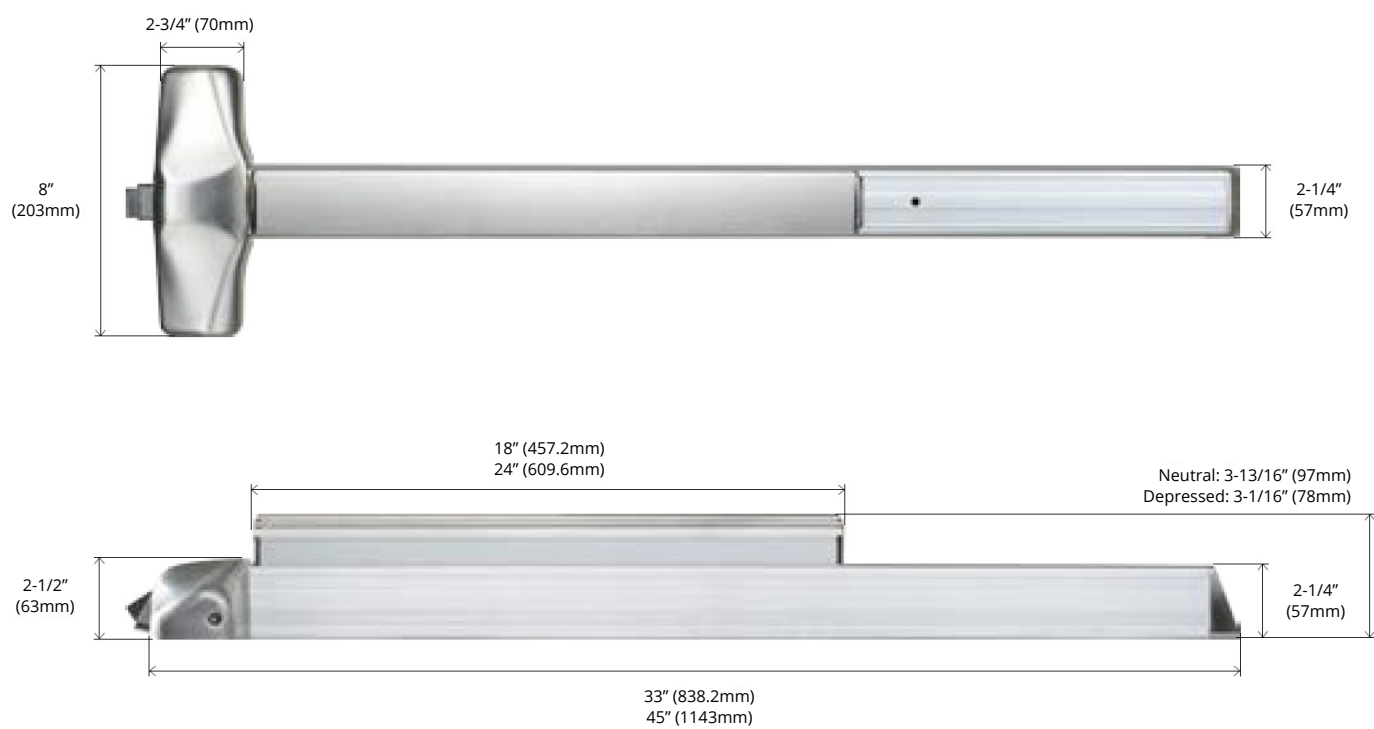
Other finishes available upon request

Finishes are for illustration only and may vary  
from actual product provided

# Exit Device Profile



# Dimensions





# Strikes

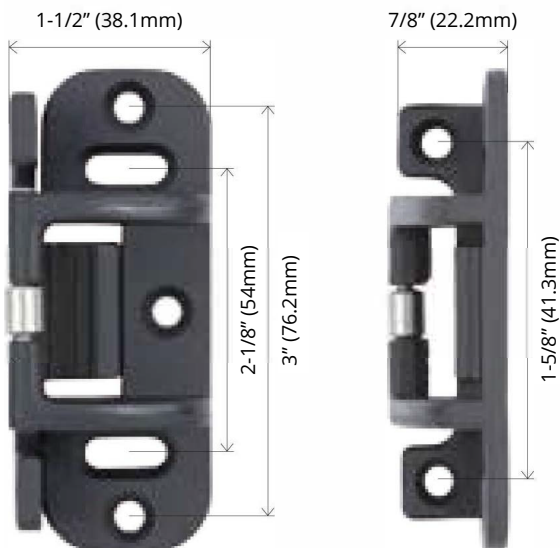
## 106 Rim Strike

Top and middle strike for three-point exit device.  
For panic applications.



## 108 Rim Strike

Top and middle strike for three-point exit device.  
For fire applications.



---

# Strikes

---

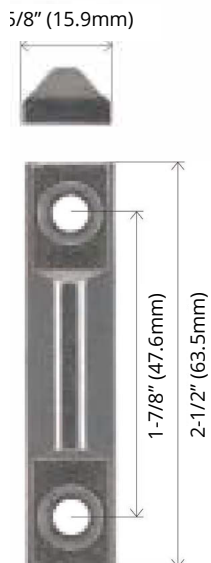
## 215 Top Strike

Top strike for flush transom for three-point exit devices.  
For panic and fire applications.



## 224 Bottom Strike

Optional bottom strike for three-point exit devices.  
For panic and fire applications.



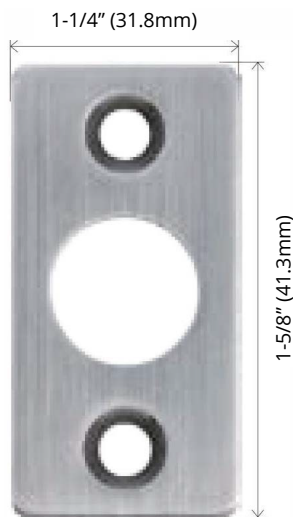
---

# Strikes

---

## 225 Bottom Strike (Flat)

Optional bottom strike for three-point exit device round slide bolt.  
For panic and fire applications.



## 226 Bottom Strike (Flat)

Optional bottom strike for three-point exit device round slide bolt.  
For panic and fire applications.



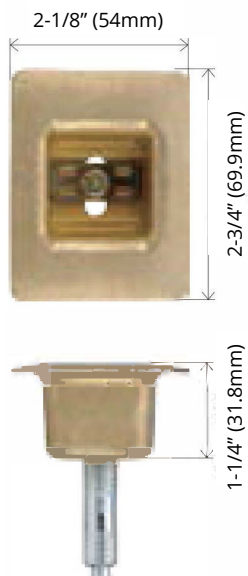
---

# Strikes

---

## 227/227F Bottom Strike

Standard bottom strike for three-point exit devices.  
For panic and fire applications.



# How to Order

## ED1500/EF1500 Heavy Duty Three-Point Latching Exit Device

### Fire Rating

ED1500	Three-point panic exit hardware
EF1500	Three-point fire exit hardware

### Bottom Rod and Latch Options

Blank	Standard
LBR	Less bottom rod
RBL	Round bottom latch
PL	Pullman latch

### Device Size

36	36" (For doors 2'4"-3')
48	48" (For doors 2'10"-4')

### Door Height

84	84" (For doors up to 84" high)
96	96" (For doors over 84" and up to 96" high)
120	120" (For doors over 96" and up to 120" high)

### Finish

613	Dark Oxidized Bronze
630	Satin Stainless Steel

### Dogging

Blank	Flat/Hex key dogging (ED1500 only)
CD	Cylinder dogging (ED1500 only)
ED	Electric dogging (ELR)
LD	Less dogging

# How to Order

## ED1500/EF1500 Heavy Duty Three-Point Latching Exit Device

### Options

Blank	Standard
AL	Alarm exit
DE	Delayed egress
ELR	Electric latch retraction
LM	Latch bolt monitoring
RX	Request to exit
SS	Signal switch

Pick one item from each category when ordering.

**Example order: ED1500-3684-630-DE**

# How to Order

## Strikes and Shim Kits

### Strikes

ED 106 Rim Strike	Top and middle strike for 3PT. For panic applications.
ED 108 Rim Strike	Top and middle strike for 3PT. For fire applications.
ED 215 Top Strike	Top strike for flush transom for 3PT. For panic and fire applications.
ED 224 Bottom Strike	Optional bottom strike for 3PT. For panic and fire applications.
ED 225 Bottom Strike (Flat)	Optional bottom strike for 3PT round slide bolt. For panic and fire applications.
ED 226 Bottom Strike (Flat)	Optional bottom strike for 3PT round slide bolt. For panic and fire applications.
ED 227 Bottom Strike	Standard bottom strike for 3PT. For panic applications.
ED 227F Bottom Strike	Standard bottom strike for 3PT. For fire applications.

### Shim Kits

616819-010	Standard shim kit for 106 Rim strike, 2 pieces furnished
616819-030	Standard shim kit for 108 Rim strike, 2 pieces furnished

# How to Order

## Accessories

### Accessories

ED 616823-010	31-7/8" bottom rod
ED 616823-020	For 7' Door Height, 36-1/8" top rod
ED 616823-030	For 8' Door Height, 48-1/8" top rod
ED 616823-040	Add to ED 616823-030 for 10' Door Height, 24" top extension rod
TFL001-630	Fire latch for LBR exit device
8-1024 SNB	Sex bolts for Exit Only device (10-24 thread)
4-4120 SNB	Sex bolts for Exit Only device or device with trim (1/4-20 thread)
2-1024 SNB	Sex bolts for device with trim (10-24 thread)





17901 Railroad Street  
City of Industry, CA  
91748

877-858-0888  
[info@townsteel.com](mailto:info@townsteel.com)

[townsteel.com](http://townsteel.com)