



ED1100/EF1100

GRADE 1 HEAVY DUTY RIM EXIT DEVICE



The TownSteel Promise

We have built our company around the promise of creating durable hardware solutions for your projects. Our complete product line is the result of decades of determined engineering. This allows TownSteel to provide you with the right product to meet your exacting specifications. With end-to-end customer support, you will find that TownSteel is the ideal company for you to partner with. Check us out at townsteel.com for more information!

ED1100/EF1100 series is a rim exit device designed for new or retrofit installation into other manufacturers' devices. The push bar assembly's smooth and reduced projection minimizes catch hazards. The device function is field selectable by adaptation with the selected type of trim. A full complement of lever trim is available in various architectural finishes.

ED1100 EF1100 RIM

CONTENTS	PAGE
Features	4
Specifications	5
Finishes	6
Exit Device Profile	7
Dimensions	8
Strikes	9
How to Order	11



Features

1000 Series exit devices are made to comply with the highest safety and security standards in the industry. The 1000 Series provides superior durability for high-impact applications such as offices, schools, banks, assisted living facilities, and other institutions or commercial buildings.

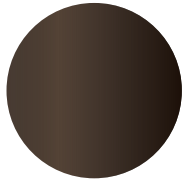


Features	Benefits
ANSI / BHMA A156.3	Grade 1 certified mechanical exit device
UL10C	UL listed 3 hour fire rating for fire rated exit devices
UL 305	UL/cUL Listed for UL 305 for panic exit devices UL 305 for fire rated exit devices
ADA compliant	Meets requirements of the Americans with Disabilities Act
BAA compliant	Meets guidelines of Buy American Act
All exit devices are non-handed or field reversible design	Allows for changing the handing without requiring new hardware
Shock-resistant latching design	Provides superior vandalism protection
All internal components made of corrosion-resistant alloy	Provides superior weather-resistance and durability
ED1000 trim options	See available trims for ED1000 series in the ED Trims catalog

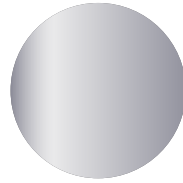
Specifications

Backset	2-3/4" reference, see template for exact backset
Door Size	36", standard 48", optional
Door Thickness	1-3/4" - 2-1/4" *Others available upon request
Mounting Height	39-5/8" from device center line to finished floor
Handing	Non-handed
Push Bar Projection	Neutral: 3-13/16" Depressed: 3-1/16"
Latch Bolt	3/4" throw, stainless steel, deadlocking
Dogging*	Flat key, standard Less dogging, optional Cylinder dogging, optional Electrical dogging, optional *For ED1100 only

Finishes



Dark Oxidized Bronze
(613)

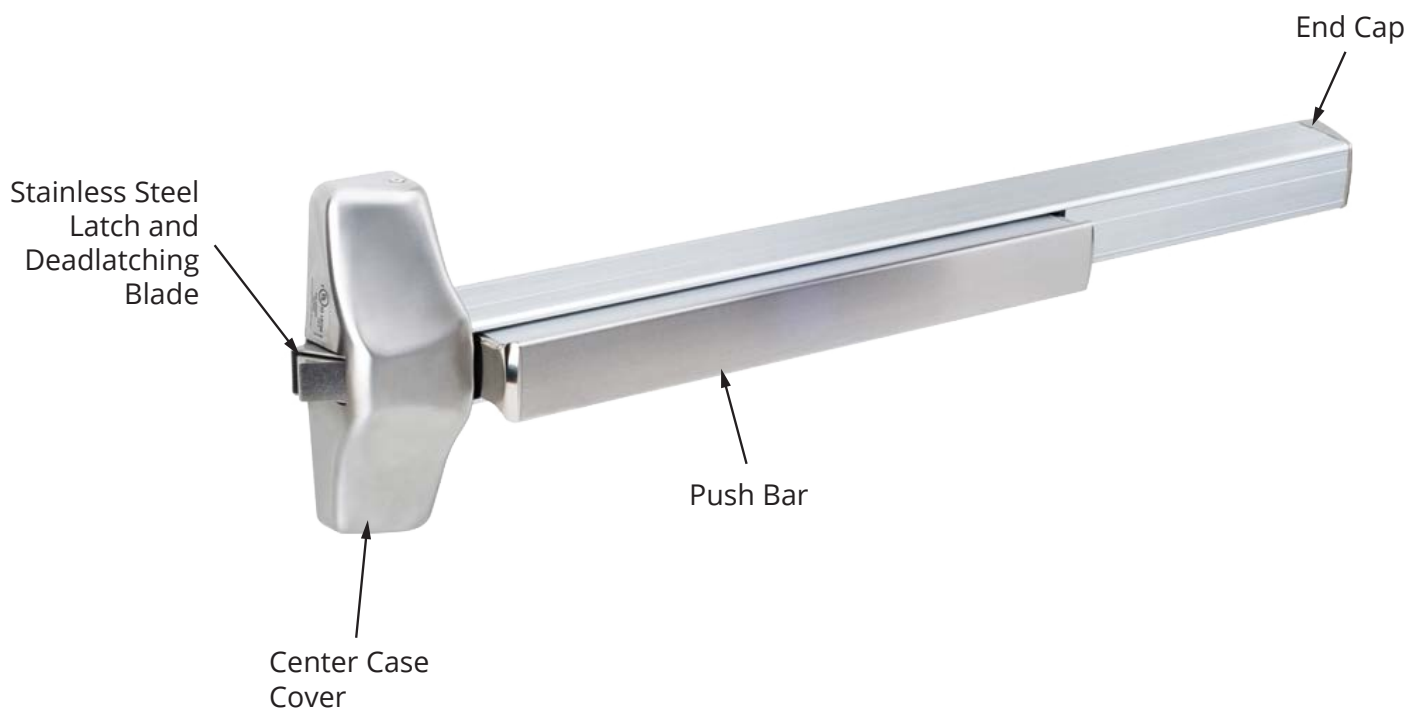


Satin Stainless Steel
(630)

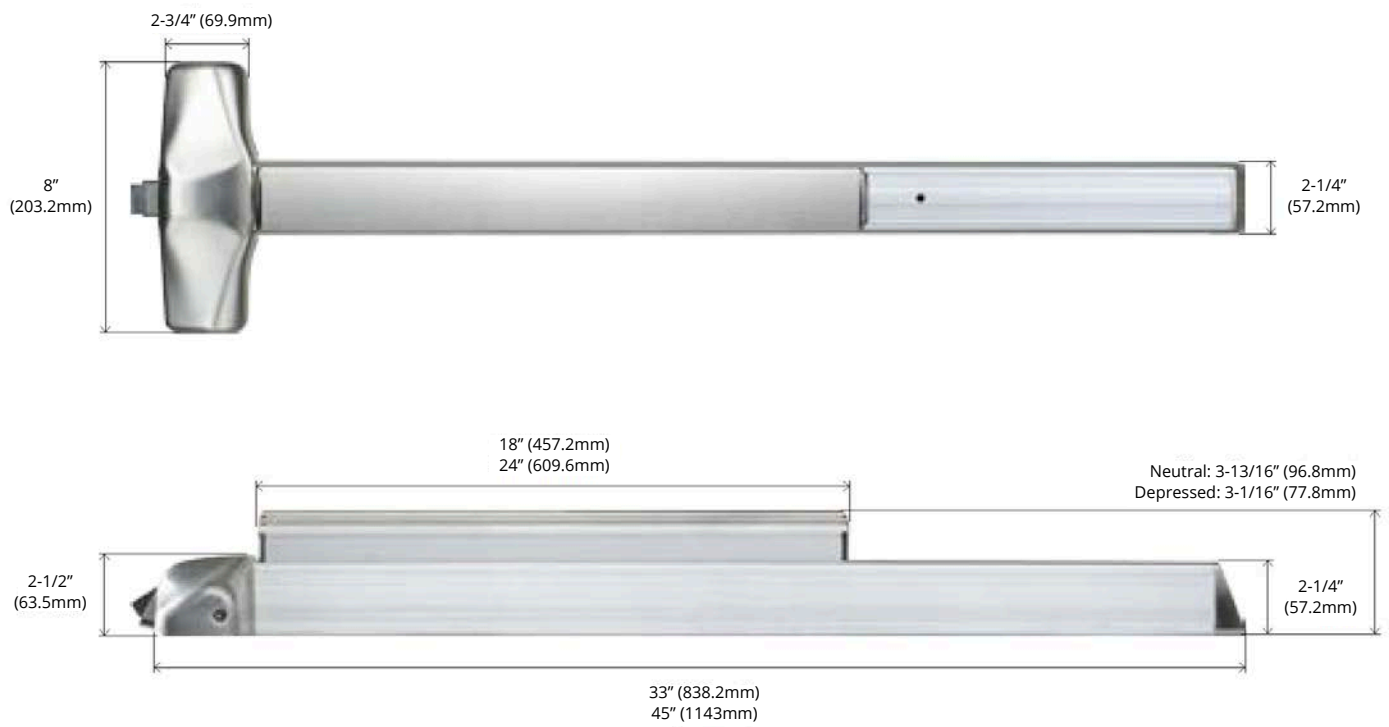
Other finishes available upon request

Finishes are for illustration only and may vary
from actual product provided

Exit Device Profile



Dimensions



Strikes

106 Rim Strike

Rim strike for Rim exit device.
For panic applications.



108 Rim Strike

Rim strike for double door Rim exit device use with mullion.
For panic and fire applications.



Strikes

136 Rim Strike

Rim strike for double door Rim exit device in combination with a coordinator.
For panic and fire applications.



How to Order

ED1100/EF1100 Heavy Duty Rim Exit Device

Fire Rating

ED1100	Rim panic exit hardware
EF1100	Rim fire exit hardware

Dogging (ED1100 Only)

Blank	Flat/Hex key dogging
CD	Cylinder dogging
ED	Electric dogging (ELR)
LD	Less dogging

Device Size

36	36"
48	48"

Finish

613	Dark Oxidized Bronze
630	Satin Stainless Steel

Options

Blank	Regular device
AL	Alarm exit
DE	Delayed egress
ELR	Electric latch retraction

How to Order

ED1100/EF1100 Heavy Duty Rim Exit Device

Options (cont.)

LM	Latch bolt monitoring
RX	Request to exit
SS	Signal switch

Pick one item from each category when ordering.

Example order: ED1100-36-630-DE

How to Order

Strikes and Shim Kits

Strikes

ED 106 Rim Strike	Rim strike for Rim exit device. For panic applications.
ED 108 Rim Strike	Rim strike for double door Rim use with mullion. For panic and fire applications.
ED 136 Rim Strike	Rim strike for double door Rim combination with a coordinator. For panic and fire applications.

Shim Kits

616819-010	Standard shim kit for 106 Rim strike, 2 pieces furnished
616819-030	Standard shim kit for 108 Rim strike, 2 pieces furnished

Accessories

Accessories

8-1024 SNB	Sex bolts for Exit Only device (10-24 thread)
2-1024 SNB	Sex bolts for device with trim (10-24 thread)



ED1200/EF1200

GRADE 1 HEAVY DUTY SURFACE VERTICAL ROD EXIT DEVICE



The TownSteel Promise

We have built our company around the promise of creating durable hardware solutions for your projects. Our complete product line is the result of decades of determined engineering. This allows TownSteel to provide you with the right product to meet your exacting specifications. With end-to-end customer support, you will find that TownSteel is the ideal company for you to partner with. Check us out at townsteel.com for more information!

ED1200/EF1200 series is a surface vertical rod exit device designed for new or retrofit installation into other manufacturers' devices. The push bar assembly's smooth and reduced projection minimizes catch hazards. The device function is field selectable by adaptation with the selected type of trim. A full complement of lever trim is available in various architectural finishes.

ED1200 EF1200 SVR



CONTENTS	PAGE
Features	4
Specifications	5
Finishes	6
Exit Device Profile	7
Dimensions	8
Strikes	9
How to Order	13

Features

1000 Series exit devices are made to comply with the highest safety and security standards in the industry. The 1000 Series provides superior durability for high-impact applications such as offices, schools, banks, assisted living facilities, and other institutions or commercial buildings.

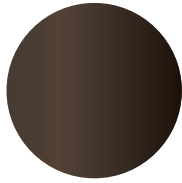


Features	Benefits
ANSI / BHMA A156.3	Grade 1 certified mechanical exit device
UL10C	UL listed 3 hour fire rating for fire rated exit devices
UL 305	UL/cUL Listed for UL 305 for panic exit devices UL 305 for fire rated exit devices
ADA compliant	Meets requirements of the Americans with Disabilities Act
BAA compliant	Meets guidelines of Buy American Act
All exit devices are non-handed or field reversible design	Allows for changing the handing without requiring new hardware
Shock-resistant latching design	Provides superior vandalism protection
All internal components made of corrosion-resistant alloy	Provides superior weather-resistance and durability
ED1000 trim options	See available trims for ED1000 series in the ED Trims catalog

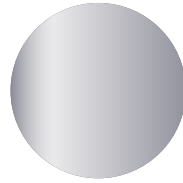
Specifications

Backset	2-3/4", standard
Door Size	36", standard 48", optional
Door Thickness	1-3/4" - 2-1/4" *Others available upon request
Door Undercut	1/4"
Mounting Height	39-5/8" from device center line to finished floor
Handing	Non-handed Field reversible
Push Bar Projection	Neutral: 3-13/16" Depressed: 3-1/16"
Top Latch Bolt	5/8" throw, stainless steel, pullman type, deadlocking
Bottom Latch Bolt	5/8" throw, stainless steel, pullman type, deadlocking Round slide bolt, optional
Top and Bottom Latch Bolt Case	4-12" x 2-1/8" x 1-1/2"
Top Rod	1/2" square tube, 36-1/8" for 7' door 1/2" square tube, 48-1/8" for 8' door
Bottom Rod	1/2" square tube, 31-7/8"
Rod Extension	Available 24" for doors ranging between 8' and 10' high
Dogging*	Flat key, standard Less dogging, optional Cylinder dogging, optional Electrical dogging, optional *For ED1200 only

Finishes



Dark Oxidized Bronze
(613)

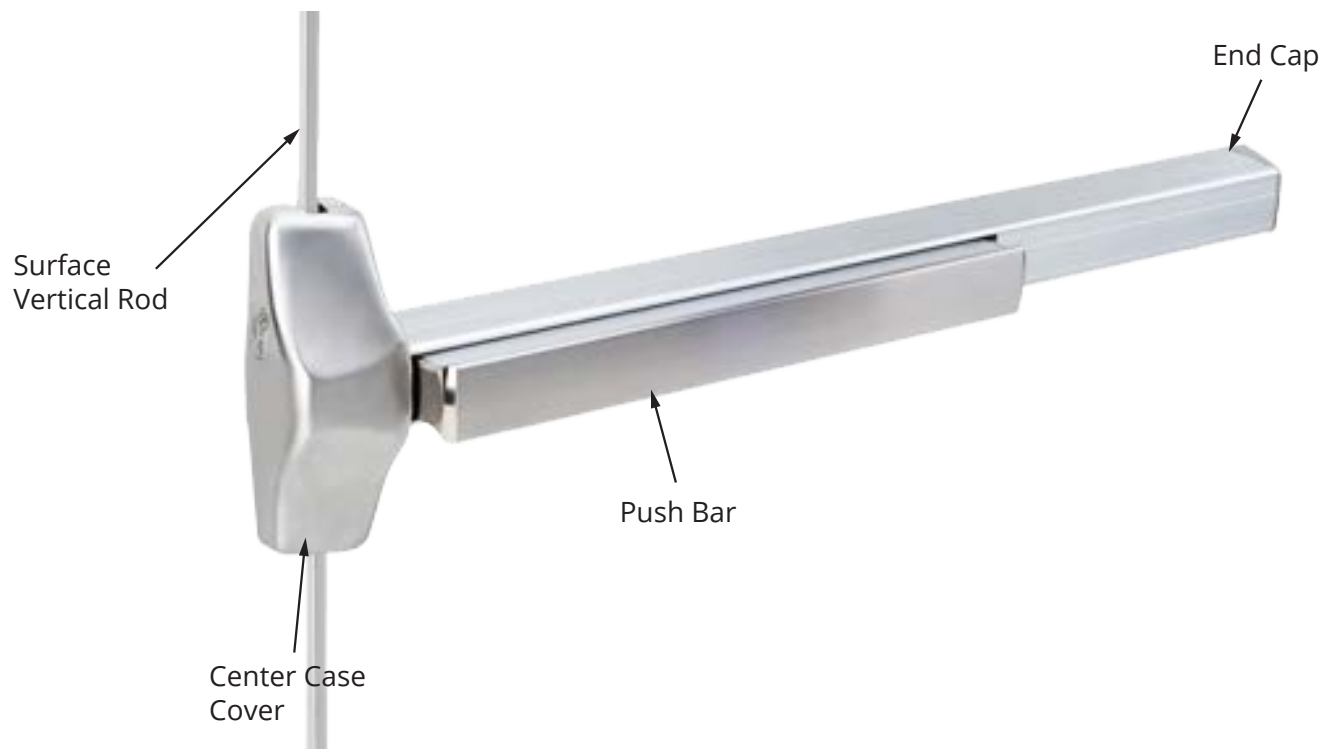


Satin Stainless Steel
(630)

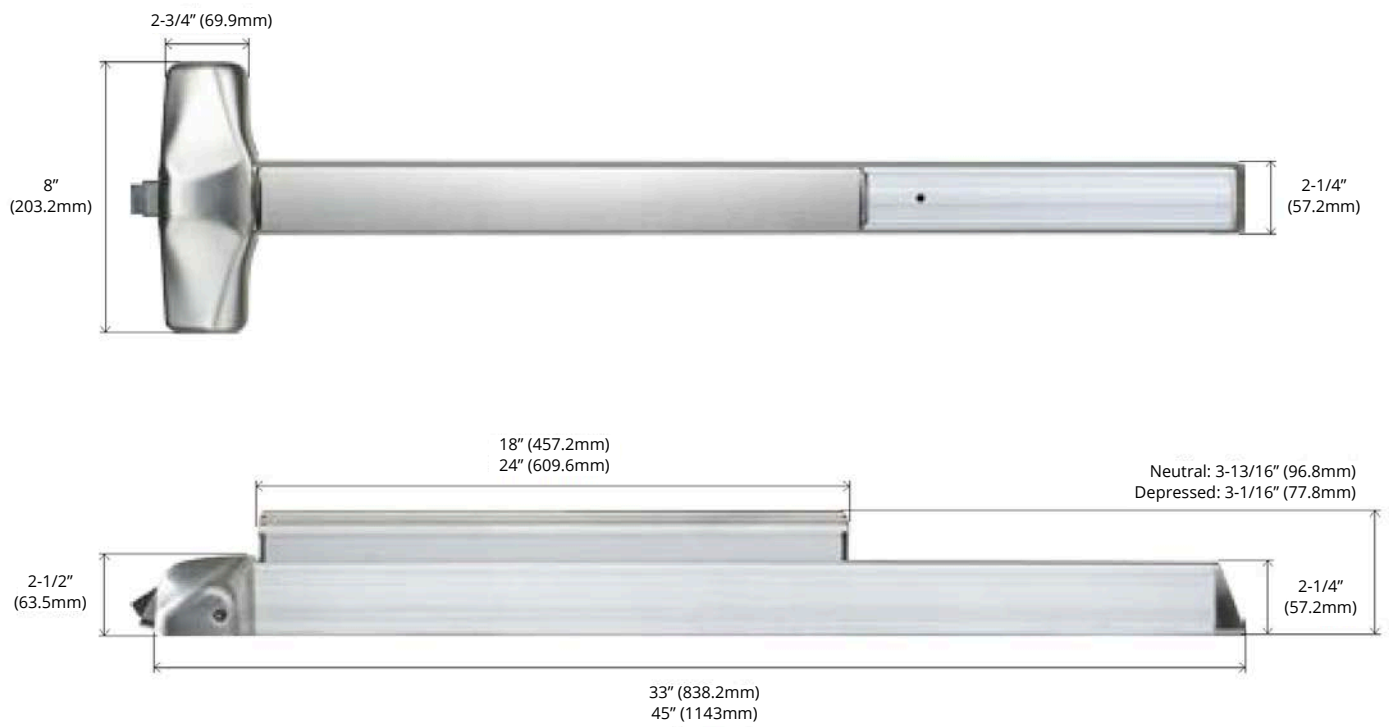
Other finishes available upon request

Finishes are for illustration only and may vary
from actual product provided

Exit Device Profile



Dimensions



Strikes

106 Rim Strike

Rim strike for surface vertical rod exit device top strike.
For panic applications.



136 Rim Strike

Rim strike for double door surface vertical rod exit device in combination with a coordinator.
For panic and fire applications.



Strikes

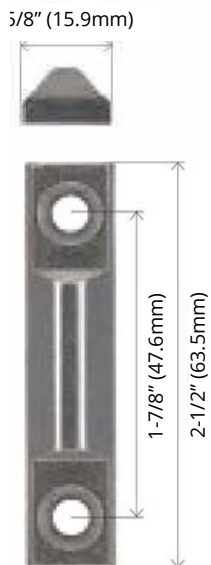
215 Top Strike

Top strike for flush transom for surface vertical rod exit devices.
For panic and fire applications.



224 Bottom Strike

Optional bottom strike for surface vertical rod exit devices.
For panic and fire applications.



Strikes

225 Bottom Strike (Flat)

Optional bottom strike for surface vertical rod exit device round slide bolt.
For panic and fire applications.



226 Bottom Strike (Flat)

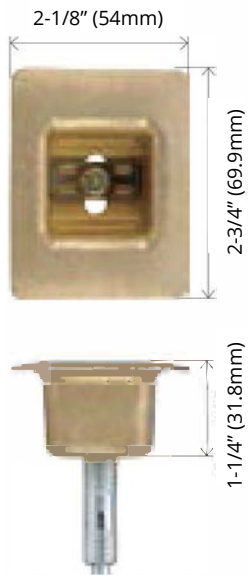
Optional bottom strike for surface vertical rod exit device round slide bolt.
For panic and fire applications.



Strikes

227/227F Bottom Strike

Standard bottom strike for surface vertical rod exit devices.
For panic and fire applications.



How to Order

ED1200/EF1200 Heavy Duty Surface Vertical Rod Exit Device

Fire Rating

ED1200	Surface vertical rod panic exit hardware
EF1200	Surface vertical rod fire exit hardware

Dogging (ED1200 Only)

Blank	Flat/Hex key dogging
CD	Cylinder dogging
ED	Electric dogging (ELR)
LD	Less dogging

Bottom Rod and Latch Options

Blank	None
LBR	Less bottom rod
RBL	Round bottom latch
PL	Pullman latch

Device Size

36	36" (For doors up to 36" wide)
48	48" (For doors over 36" and up to 48" wide)

Door Size

84	84" (For doors up to 84" high)
96	96" (For doors up to 96" high)
120	120" (For doors up to 120" high)

Finish

613	Dark Oxidized Bronze
630	Satin Stainless Steel

How to Order

ED1200/EF1200 Heavy Duty Surface Vertical Rod Exit Device

Options

Blank	Regular device
AL	Alarm exit
DE	Delayed egress
ELR	Electric latch retraction
LM	Latch bolt monitoring
RX	Request to exit
SS	Signal switch

Pick one item from each category when ordering.

Example order: ED1200-3684-630-DE

How to Order

Strikes and Shim Kits

Strikes

ED 106 Rim Strike	Rim strike for SVR top strike. For panic applications.
ED 136 Rim Strike	Rim strike for double door SVR in combination with a coordinator. For panic and fire applications.
ED 215 Top Strike	Top strike for flush transom for SVR. For panic and fire applications.
ED 224 Bottom Strike	Optional bottom strike for SVR. For panic and fire applications.
ED 225 Bottom Strike (Flat)	Optional bottom strike for SVR round slide bolt. For panic and fire applications.
ED 226 Bottom Strike (Flat)	Optional bottom strike for SVR round slide bolt. For panic and fire applications.
ED 227 Bottom Strike	Standard bottom strike for SVR. For panic applications.
ED 227F Bottom Strike	Standard bottom strike for SVR. For fire applications.

Shim Kits

616819-010	Standard shim kit for 106 Rim strike, 2 pieces furnished
------------	--

How to Order

Accessories

Accessories

ED 616823-010	31-7/8" bottom rod
ED 616823-020	For 7' Door Height, 36-1/8" top rod
ED 616823-030	For 8' Door Height, 48-1/8" top rod
ED 616823-040	For 10' Door Height, 24" top extension rod for ED 616823-030
TFL001-630	Fire latch for LBR exit device
6-1024 SNB	Sex bolts for Exit Only device (10-24 thread)
4-4120 SNB	Sex bolts for Exit Only device or device with trim (1/4-20 thread)
2-1024 SNB	Sex bolts for device with trim (10-24 thread)



ED1300/EF1300

GRADE 1 HEAVY DUTY CONCEALED VERTICAL ROD EXIT DEVICE

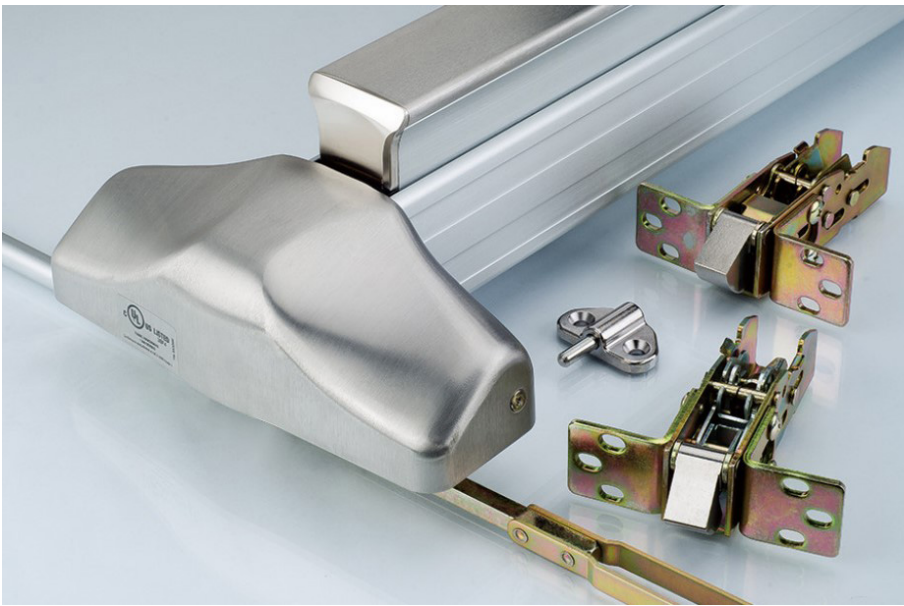


The TownSteel Promise

We have built our company around the promise of creating durable hardware solutions for your projects. Our complete product line is the result of decades of determined engineering. This allows TownSteel to provide you with the right product to meet your exacting specifications. With end-to-end customer support, you will find that TownSteel is the ideal company for you to partner with. Check us out at townsteel.com for more information!

ED1300/EF1300 series is a concealed vertical rod exit device designed for new or retrofit installation into other manufacturers' devices. The push bar assembly's smooth and reduced projection minimizes catch hazards. The device function is field selectable by adaptation with the selected type of trim. A full complement of lever trim is available in various architectural finishes.

ED1300 EF1300 CVR



CONTENTS	PAGE
Features	4
Specifications	5
Finishes	6
Exit Device Profile	7
Dimensions	8
Strikes	9
How to Order	12

Features

1000 Series exit devices are made to comply with the highest safety and security standards in the industry. The 1000 Series provides superior durability for high-impact applications such as offices, schools, banks, assisted living facilities, and other institutions or commercial buildings.

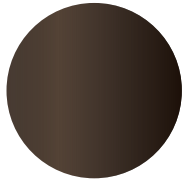


Features	Benefits
ANSI / BHMA A156.3	Grade 1 certified mechanical exit device
UL10C	UL listed 3 hour fire rating for fire rated exit devices
UL 305	UL 305 listed panic and fire rated exit devices
ADA compliant	Meets requirements of the Americans with Disabilities Act
BAA compliant	Meets guidelines of Buy American Act
All exit devices are non-handed or field reversible design	Allows for changing the handing without requiring new hardware
Shock-resistant latching design	Provides superior vandalism protection
All internal components made of corrosion-resistant alloy	Provides superior weather-resistance and durability
ED1000 trim options	See available trims for ED1000 series in the ED Trims catalog

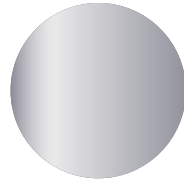
Specifications

Backset	2-3/4", standard
Door Size	36", standard 48", optional
Door Thickness	1-3/4" - 2-1/4" *Others available upon request
Door Undercut	1/4"
Mounting Height	39-5/8" from device center line to finished floor
Handing	Non-handed Field reversible
Push Bar Projection	Neutral: 3-13/16" Depressed: 3-1/16"
Top Latch Bolt	5/8" throw, stainless steel, pullman type, deadlocking
Bottom Latch Bolt	5/8" throw, stainless steel, pullman type, deadlocking Round slide bolt, optional
Top and Bottom Latch Bolt Case	4-12" x 2-1/8" x 1-1/2"
Top Rod	1/2" round tube, 37" for 7' door 1/2" round tube, 49" for 8' door
Bottom Rod	1/2" round tube, 31-3/4"
Rod Extension	Available 24" for doors ranging between 8' and 10' high
Dogging*	Flat key, standard Less dogging, optional Cylinder dogging, optional Electrical dogging, optional *For ED1300 only

Finishes



Dark Oxidized Bronze
(613)



Satin Stainless Steel
(630)

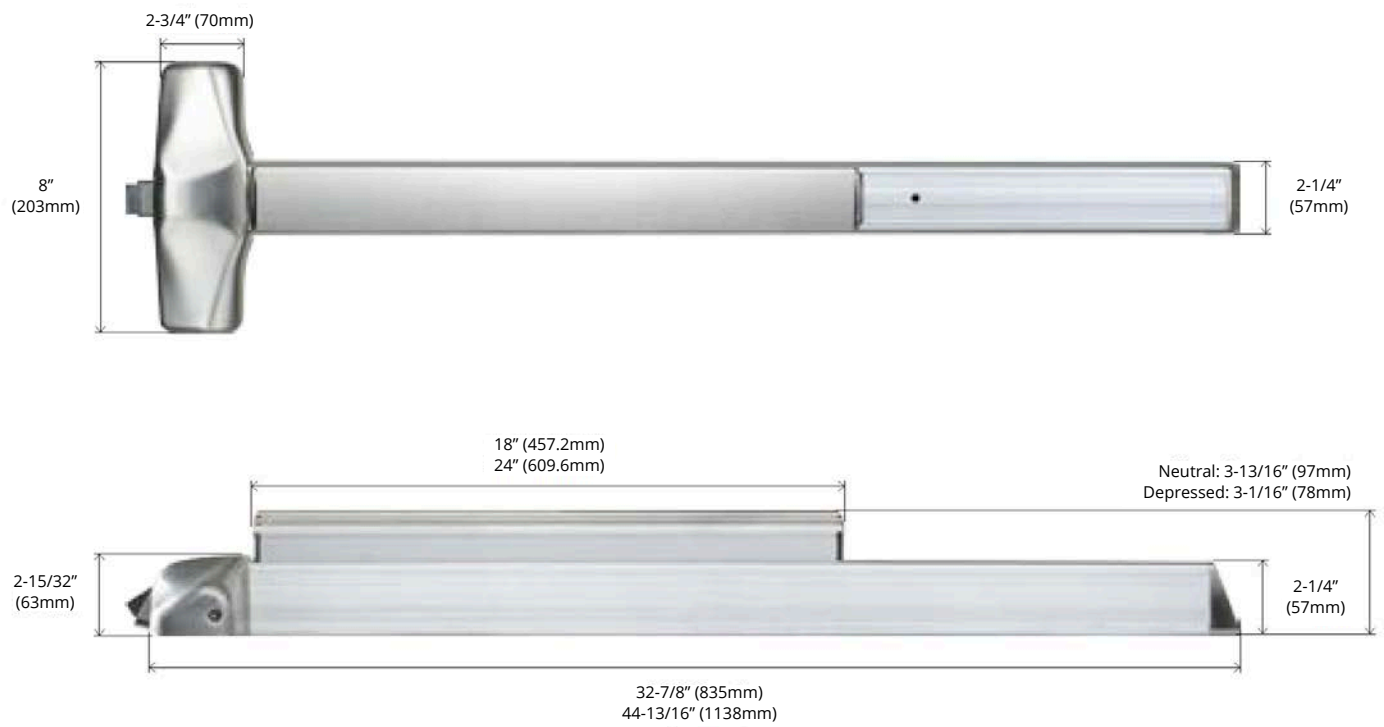
Other finishes available upon request

Finishes are for illustration only and may vary
from actual product provided

Exit Device Profile



Dimensions



Strikes

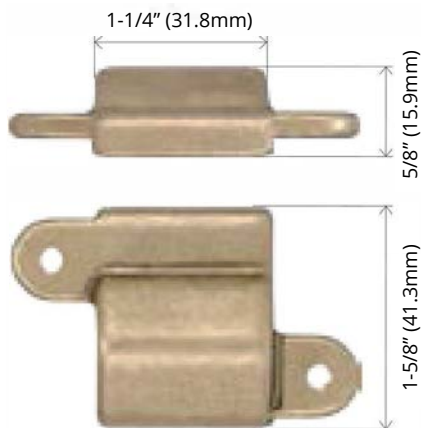
136 Rim Strike

Rim strike for double door concealed vertical rod exit device in combination with a coordinator.
For panic and fire applications.



216 Top Strike

Top strike for concealed vertical rod exit devices.
For panic and fire applications.



Strikes

225 Bottom Strike (Flat)

Optional bottom strike for concealed vertical rod exit device round slide bolt.
For panic and fire applications.



226 Bottom Strike (Flat)

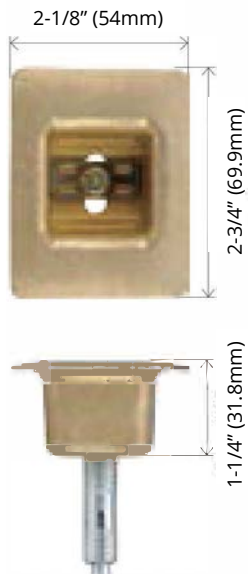
Optional bottom strike for concealed vertical rod exit device round slide bolt.
For panic and fire applications.



Strikes

227/227F Bottom Strike

Standard bottom strike for concealed vertical rod exit devices.
For panic and fire applications.



How to Order

ED1300/EF1300 Heavy Duty Concealed Vertical Rod Exit Device

Fire Rating

ED1300	Concealed vertical rod panic exit hardware
EF1300	Concealed vertical rod fire exit hardware

Dogging (ED1300 Only)

Blank	Flat/Hex key dogging
CD	Cylinder dogging
ED	Electric dogging (ELR)
LD	Less dogging

Bottom Rod and Latch Options

Blank	None
LBR	Less bottom rod
RBL	Round bottom latch
PL	Pullman latch

Device Size

36	36"
48	48"

Door Size

84	84"
96	96"
120	120"

Finish

613	Dark Oxidized Bronze
630	Satin Stainless Steel

How to Order

ED1300/EF1300 Heavy Duty Concealed Vertical Rod Exit Device

Options

Blank	Regular device
AL	Alarm exit
DE	Delayed egress
ELR	Electric latch retraction
LM	Latch bolt monitoring
RX	Request to exit
SS	Signal switch

Pick one item from each category when ordering.

Example order: ED1300-3684-630-DE

How to Order

Strikes

Strikes

ED 136 Rim Strike	Rim strike for double door CVR in combination with a coordinator. For panic and fire applications.
ED 216 Top Strike	Top strike for CVR. For panic and fire applications.
ED 225 Bottom Strike (Flat)	Optional bottom strike for CVR round slide bolt. For panic and fire applications.
ED 226 Bottom Strike (Flat)	Optional bottom strike for CVR round slide bolt. For panic and fire applications.
ED 227 Bottom Strike	Standard bottom strike for CVR. For panic applications.
ED 227F Bottom Strike	Standard bottom strike for CVR. For fire applications.

Accessories

Accessories

ED 616823-70	For 7' Door Height, 36-1/8" top rod
ED 616823-80	For 8' Door Height, 49" top rod
ED 616823-50	For 10' Door Height, 23-7/8" top extension rod for ED 616823-80
24682300910	34-9/32" bottom rod
6-1024 SNB	Sex bolts for Exit Only device (10-24 thread)
2-1024 SNB	Sex bolts for device with trim (10-24 thread)



ED1400/EF1400

GRADE 1 HEAVY DUTY MORTISE LOCK EXIT DEVICE



The TownSteel Promise

We have built our company around the promise of creating durable hardware solutions for your projects. Our complete product line is the result of decades of determined engineering. This allows TownSteel to provide you with the right product to meet your exacting specifications. With end-to-end customer support, you will find that TownSteel is the ideal company for you to partner with. Check us out at townsteel.com for more information!

ED1400/EF1400 series is a mortise exit device designed for new or retrofit installation into other manufacturers' devices. The push bar assembly's smooth and reduced projection minimizes catch hazards. The device function is field selectable by adaptation with the selected type of trim. A full complement of lever trim is available in various architectural finishes.

ED1400 EF1400 Mortise



CONTENTS	PAGE
Features	4
Specifications	5
Finishes	6
Exit Device Profile	7
Dimensions	8
Strikes	9
How to Order	11

Features

1000 Series exit devices are made to comply with the highest safety and security standards in the industry. The 1000 Series provides superior durability for high-impact applications such as offices, schools, banks, assisted living facilities, and other institutions or commercial buildings.

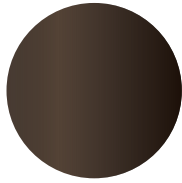


Features	Benefits
ANSI / BHMA A156.3	Grade 1 certified mechanical exit device
UL10C	UL listed 3 hour fire rating for fire rated exit devices
UL 305	UL/cUL Listed for UL 305 for panic exit devices UL 305 for fire rated exit devices
ADA compliant	Meets requirements of the Americans with Disabilities Act
BAA compliant	Meets guidelines of Buy American Act
All exit devices are non-handed or field reversible design	Allows for changing the handing without requiring new hardware
Shock-resistant latching design	Provides superior vandalism protection
All internal components made of corrosion-resistant alloy	Provides superior weather-resistance and durability
ED1000 trim options	See available trims for ED1000 series in the ED Trims catalog

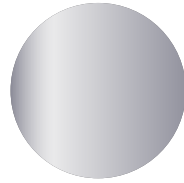
Specifications

Backset	2-3/4", standard
Door Size	36", standard 48", optional
Door Thickness	1-3/4" - 2-1/4" *Others available upon request
Mounting Height	39-5/8" from device center line to finished floor
Handing	Field Reversible
Push Bar Projection	Neutral: 3-13/16" Depressed: 3-1/16"
Latch Bolt	3/4" throw, stainless steel, deadlocking
Dogging*	Flat key, standard Less dogging, optional Cylinder dogging, optional Electrical dogging, optional *For ED1400 only

Finishes



Dark Oxidized Bronze
(613)

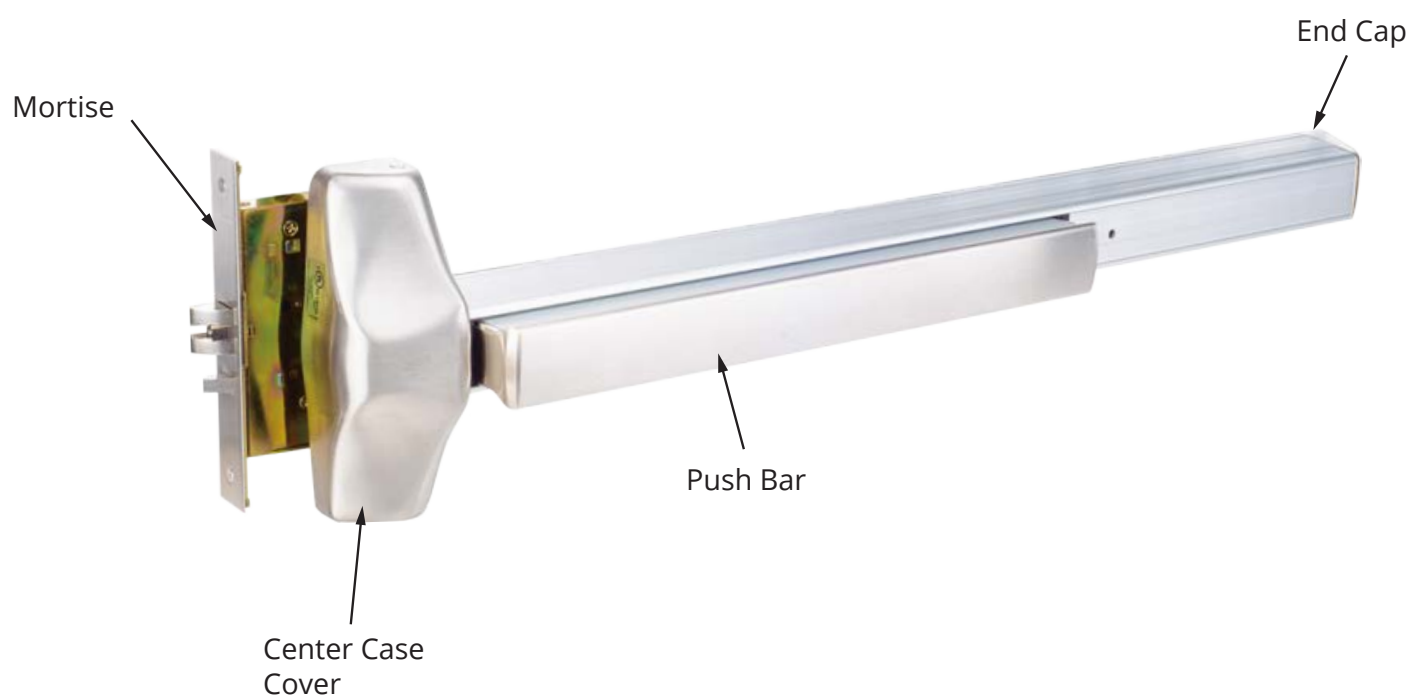


Satin Stainless Steel
(630)

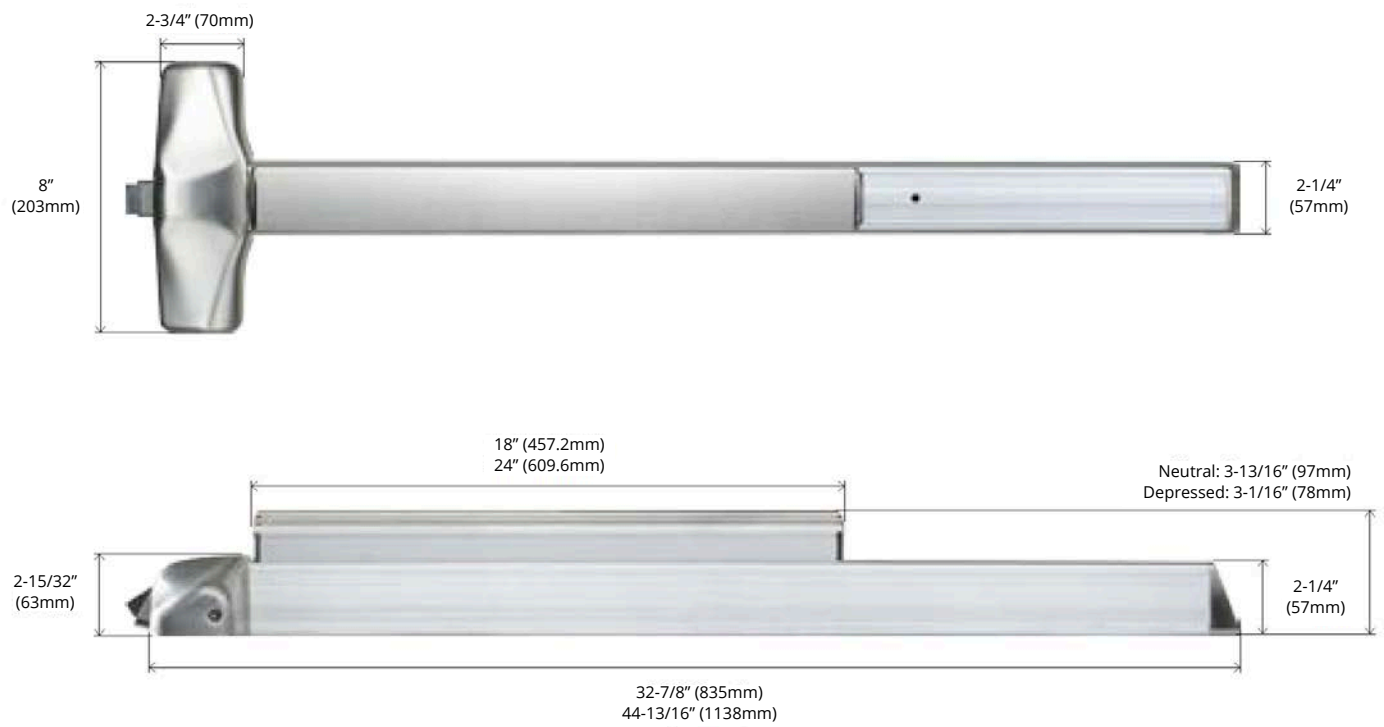
Other finishes available upon request

Finishes are for illustration only and may vary
from actual product provided

Exit Device Profile



Dimensions



Strikes

306 Strikes`

Standard mortise strike for use on 1-3/4" or 2-1/4" single door and 2-1/4" double door mortise exit devices with coordinator. For panic and fire applications.



336 Strikes

Mortise strike for use on 1-3/4" thick double door mortise exit devices with coordinator and astragal. For panic and fire applications.



Strikes

337 Open Back Strike

Open back mortise strike for 2-1/4" thick double doors mortise exit devices without coordinator. For panic applications.



338 Open Back Strike

Standard open back mortise strike for 1-3/4" thick double doors mortise exit devices without coordinator. For panic applications.



How to Order

ED1400/EF1400 Heavy Duty Mortise Lock Exit Device

Fire Rating

ED1400	Mortise panic exit hardware
EF1400	Mortise fire exit hardware

Dogging (ED1400 Only)

Blank	Flat/Hex key dogging
CD	Cylinder dogging
ED	Electric dogging (ELR)
LD	Less dogging

Device Size

36	36"
48	48"

Finish

613	Dark Oxidized Bronze
630	Satin Stainless Steel

Options

Blank	Regular device
AL	Alarm exit
DE	Delayed egress
E	Electric mortise lock

How to Order

ED1400/EF1400 Heavy Duty Mortise Lock Exit Device

Options (cont.)

ELR	Electric latch retraction
RX	Request to exit
SS	Signal switch

Pick one item from each category when ordering.

Example order: ED1400-36-630-DE

How to Order

Strikes

Strikes

336	Mortise strike for use on 1-3/4" thick double door mortise exit devices with coordinator and astragal. For panic and fire applications.
306	Standard mortise strike for use on 1-3/4" or 2-1 /4" single door and 2-1/4" double door mortise exit devices with coordinator. For panic and fire applications.
337	Open back mortise strike for 2-1 /4" thick double doors mortise exit devices without coordinator. For panic applications.
338	Standard open back mortise strike for 1-3/4" thick double doors mortise exit devices without coordinator. For panic applications.

Accessories

Accessories

6-1024 SNB	Sex bolts for Exit Only device (10-24 thread)
2-1024 SNB	Sex bolts for device with trim (10-24 thread)



ED1500/EF1400

GRADE 1 HEAVY DUTY THREE-POINT LATCHING EXIT DEVICE



The TownSteel Promise

We have built our company around the promise of creating durable hardware solutions for your projects. Our complete product line is the result of decades of determined engineering. This allows TownSteel to provide you with the right product to meet your exacting specifications. With end-to-end customer support, you will find that TownSteel is the ideal company for you to partner with. Check us out at townsteel.com for more information!

ED1500/EF1500 series is a three-point exit device designed for new or retrofit installation into other manufacturers' devices. The push bar assembly's smooth and reduced projection minimizes catch hazards. The device function is field selectable by adaptation with the selected type of trim. A full complement of lever trim is available in various architectural finishes.

ED1500 EF1500 3PT



CONTENTS	PAGE
Features	4
Specifications	5
Finishes	6
Exit Device Profile	7
Dimensions	8
Strikes	9
How to Order	13

Features

1000 Series exit devices are made to comply with the highest safety and security standards in the industry. The 1000 Series provides superior durability for high-impact applications such as offices, schools, banks, assisted living facilities, and other institutions or commercial buildings.

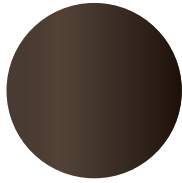


Features	Benefits
ANSI / BHMA A156.3	Grade 1 certified mechanical exit device
UL10C	UL listed 3 hour fire rating for fire rated exit devices
UL 305	UL/cUL Listed for UL 305 for panic exit devices UL 305 for fire rated exit devices
ADA compliant	Meets requirements of the Americans with Disabilities Act
BAA compliant	Meets guidelines of Buy American Act
All exit devices are non-handed or field reversible design	Allows for changing the handing without requiring new hardware
Shock-resistant latching design	Provides superior vandalism protection
All internal components made of corrosion-resistant alloy	Provides superior weather-resistance and durability
ED1000 trim options	See available trims for ED1000 series in the ED Trims catalog

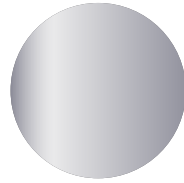
Specifications

Backset	2-3/4", standard
Door Size	36", standard 48", optional
Door Thickness	1-3/4" - 2-1/4" *Others available upon request
Door Undercut	1/4"
Mounting Height	39-5/8" from device center line to finished floor
Handing	Non-handed Field reversible
Push Bar Projection	Neutral: 3-13/16" Depressed: 3-1/16"
Top Latch Bolt	5/8" throw, stainless steel, pullman type, deadlocking
Bottom Latch Bolt	5/8" throw, stainless steel, pullman type, deadlocking Round slide bolt, optional
Top and Bottom Latch Bolt Case	4-12" x 2-1/8" x 1-1/2"
Top Rod	1/2" square tube, 36-1/8" for 7' door 1/2" square tube, 48-1/8" for 8' door
Bottom Rod	1/2" square tube, 31-7/8"
Rod Extension	Available 24" for doors ranging between 8' and 10' high
Dogging*	Flat key, standard Less dogging, optional Cylinder dogging, optional Electrical dogging, optional *For ED1500 only

Finishes



Dark Oxidized Bronze
(613)



Satin Stainless Steel
(630)

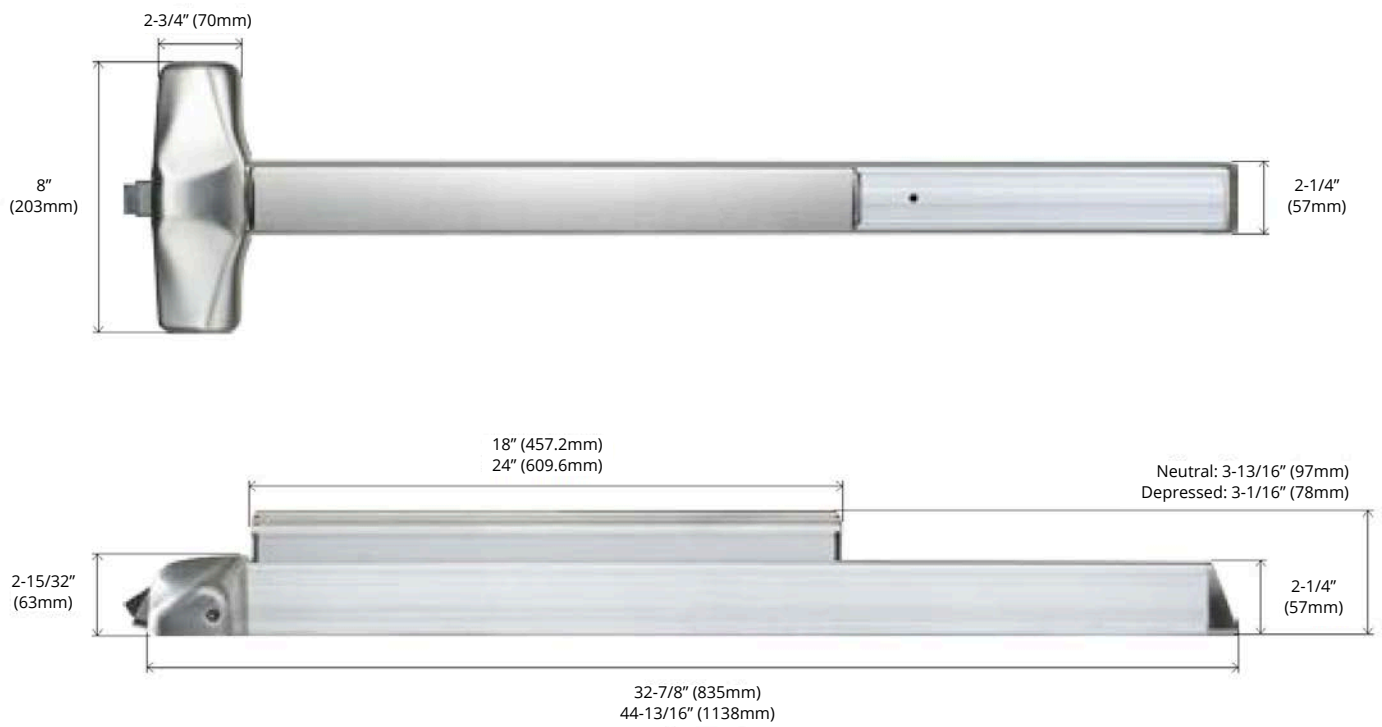
Other finishes available upon request

Finishes are for illustration only and may vary
from actual product provided

Exit Device Profile



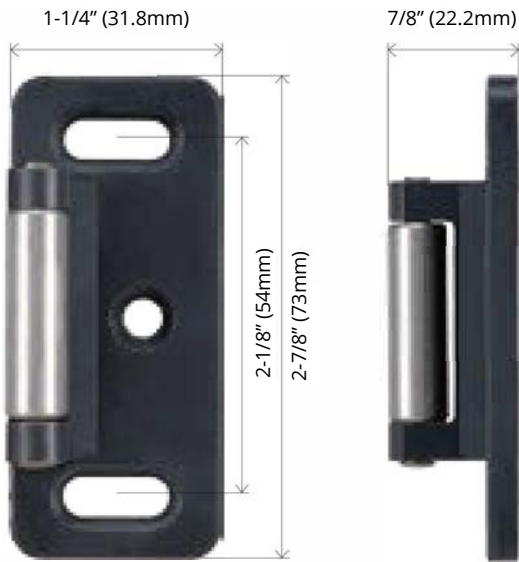
Dimensions



Strikes

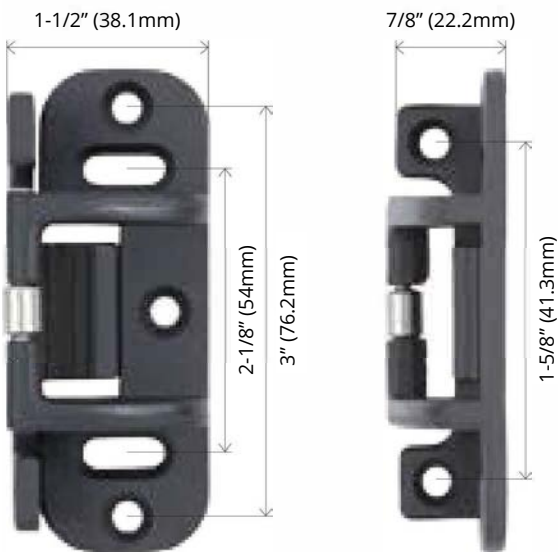
106 Rim Strike

Rim strike for three-point exit device top strike.
For panic applications.



108 Rim Strike

Rim strike for double door three-point exit device use with mullion.
For panic and fire applications.



Strikes

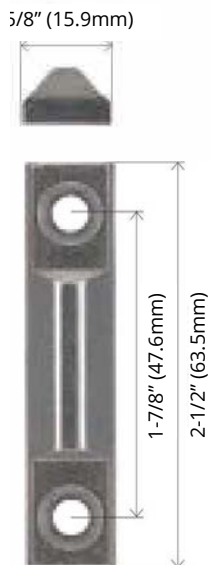
215 Top Strike

Top strike for flush transom for three-point exit devices.
For panic and fire applications.



224 Bottom Strike

Optional bottom strike for three-point exit devices.
For panic and fire applications.



Strikes

225 Bottom Strike (Flat)

Optional bottom strike for three-point exit device round slide bolt.
For panic and fire applications.



226 Bottom Strike (Flat)

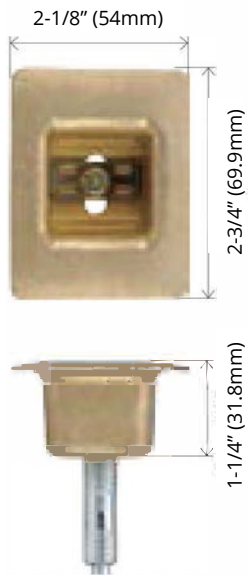
Optional bottom strike for three-point exit device round slide bolt.
For panic and fire applications.



Strikes

227/227F Bottom Strike

Standard bottom strike for three-point exit devices.
For panic and fire applications.



How to Order

ED1500/EF1500 Heavy Duty Three Point Latching Exit Device

Fire Rating

ED1500	Three point panic exit hardware
EF1500	Three point fire exit hardware

Dogging (ED1500 Only)

Blank	Flat/Hex key dogging
CD	Cylinder dogging
ED	Electric dogging (ELR)
LD	Less dogging

Bottom Rod and Latch Options

Blank	None
LBR	Less bottom rod
RBL	Round bottom latch
PL	Pullman latch

Device Size

36	36"
48	48"

Door Size

84	84"
96	96"
120	120"

Finish

613	Dark Oxidized Bronze
630	Satin Stainless Steel

How to Order

ED1500/EF1500 Heavy Duty Three Point Latching Exit Device

Options

Blank	Regular device
AL	Alarm exit
DE	Delayed egress
ELR	Electric latch retraction
LM	Latch bolt monitoring
RX	Request to exit
SS	Signal switch

Pick one item from each category when ordering.

Example order: ED1500-3684-630-DE

How to Order

Strikes and Shim Kits

Strikes

ED 106 Rim Strike	Rim strike for 3PT top strike. For panic applications.
ED 108 Rim Strike	Rim strike for double door 3PT use with mullion. For panic and fire applications.
ED 215 Top Strike	Top strike for flush transom for 3PT. For panic and fire applications.
ED 225 Bottom Strike (Flat)	Optional bottom strike for 3PT round slide bolt. For panic and fire applications.
ED 226 Bottom Strike (Flat)	Optional bottom strike for 3PT round slide bolt. For panic and fire applications.
ED 224 Bottom Strike	Optional bottom strike for 3PT. For panic and fire applications.
ED 227 Bottom Strike	Standard bottom strike for 3PT. For panic applications.
ED 227F Bottom Strike	Standard bottom strike for 3PT. For fire applications.

Shim Kits

616819-010	Standard shim kit for 106 Rim strike, 2 pieces furnished
616819-030	Standard shim kit for 108 Rim strike, 2 pieces furnished

How to Order

Accessories

Accessories

ED 616823-010	31-7/8" bottom rod
ED 616823-020	For 7' Door Height, 36-1/8" top rod
ED 616823-030	For 8' Door Height, 48-1/8" top rod
ED 616823-040	Add to ED 616823-030 for 10' Door Height, 24" top extension rod
8-1024 SNB	Sex bolts for Exit Only device (10-24 thread)
4-4120 SNB	Sex bolts for Exit Only device or device with trim (1/4-20 thread)
2-1024 SNB	Sex bolts for device with trim (10-24 thread)



17901 Railroad Street
City of Industry, CA
91748

877-858-0888
info@townsteel.com

townsteel.com