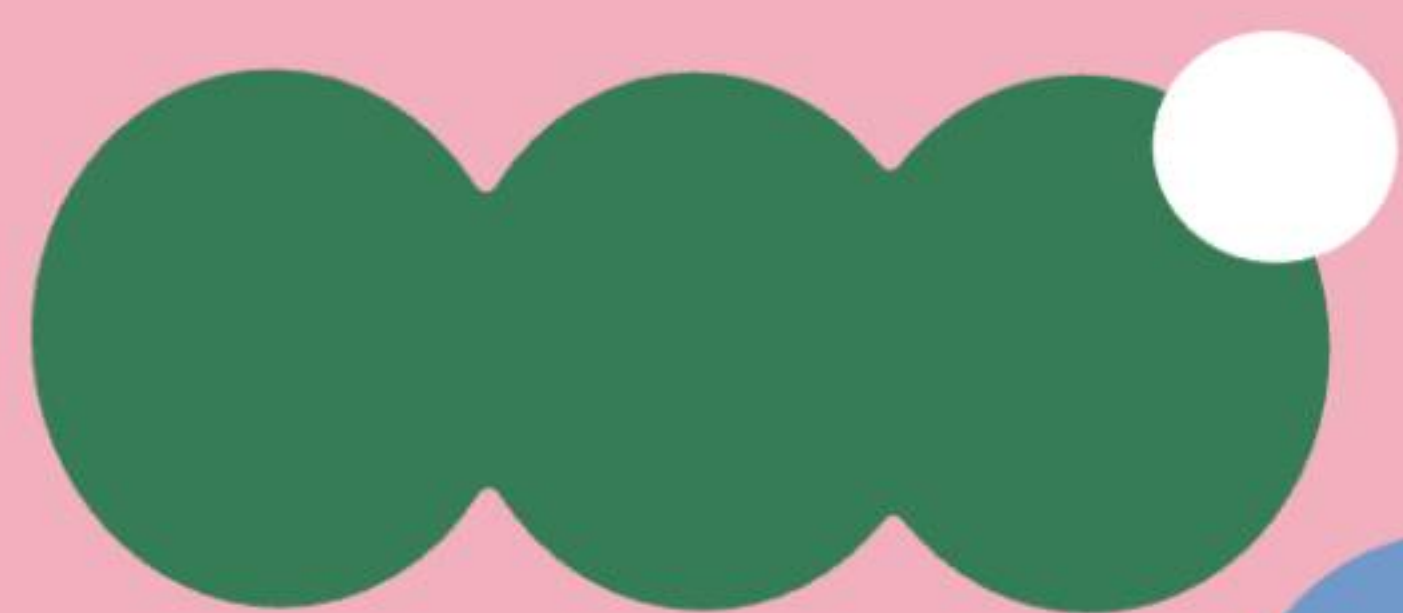


me



MEPLACE PRESENTS

# Hackney Wick Nursery

[MEPLACE.CO/NURSERIES/HACKNEY-WICK](https://meplace.co/nurseries/hackney-wick)

21 ROTHBURY ROAD, E9 5HD



# Table of Contents

About MEplace	03
Space & Environment	06
Team	13
Programme	16
Food	22
Community	25
Memberships & Fees	29
How to Join MEplace/FAQs	33





# About MEplace

MEplace is a range of holistic nurseries and after-school/holiday clubs with a core focus on mental and physical health.

Five key elements set us apart: our dedicated **team**, thoughtfully curated **activities**, eco-friendly **environment**, high quality **nutrition** and **parent education**.





At a time when conscious parenting was just beginning to grow in popularity, and mental and physical health was still largely overlooked in childcare settings, our founder opened MEplace to fill the gap.

Our founder, Vlada, wanted to give her son the best chances at leading a fulfilling life. So four years ago, she started MEplace nursery.

Our first site in Hackney Wick opened its doors in 2020. Due to demand, expansion continued with the opening of our second HWK location: 'MEbig'. In 2022, our first site then became 'MEbaby'. 2024 saw the opening of MEclub, and our newest site, MEplace King's Cross.

We've learnt so much over the years, in collaboration with our talented team and MEcommunity.

Our dream is to maintain the highest quality of education and care for the families we serve, always prioritising mental and physical health within the early years. We've always prioritised quality over growth, with no intention of becoming a large chain that values expansion more than the families we serve.

Instead, we aim to continue making a positive impact in the thriving communities across our locations. We can't wait to welcome you to the MEfamily.







# We're on a mission to empower parents to raise happy and healthy children.

We understand the importance of equipping parents with everything they need to raise happier, healthier children. Early life experiences can change the brain for good, and a truly positive childcare experience recognises this. We focus on the quality of interactions with others, opportunities to learn about the self, and an understanding of mental and physical health.





# Space & Environment

Welcome to the vibrant East London community of Hackney Wick.  
We're so proud of our thriving HWK nurseries.







## Where it all began...

In 2020, MEplace Nursery HWK opened its doors. Since then we've continued to grow, while never losing sight of our roots. When demand grew quickly, our second site opened next door in 2022, and we named the sites 'MEbaby' and 'MEbig'. These thriving nurseries have become hubs of community, reflecting and celebrating our vibrant East London community from our teachers to our toddlers!





# Our very first nurseries in the heart of East London.

Nestled in the heart of the vibrant Hackney Wick, our neighbouring nursery sites sit at the intersection of community life and green space. Tucked between two beautiful parks, the possibilities for exploration with our little learners are endless. We're moments away from the Hackney Wick Overground station, and within 20 minutes you can travel from our East London home right into the heart of the city.





A space that invites play,  
learning & mindfulness.





## Our nursery sites, designed with your little ones' development in mind.

MEplace partnered with 2LG Studio to create a beautiful, colourful, and joyful environment where our children feel empowered to explore and discover. With our bespoke signage, soft aesthetics and calming colour scheme, we've gone above and beyond to make the space our home.

Our space is not only great to look at. Impact is important to us, and we consider **sustainability** in everything we do. That's why our nursery building has been engineered to have the lowest possible environmental impact, and is fitted using neutral, natural materials.

From our very beginnings, we wanted MEplace to be a space that promotes and fosters **children's independent exploration**. Our unique 'Golden Thread' curriculum is inspired by teachings from Maria Montessori, who describes a child's environment as their 'third teacher'.

Our thoughtfully designed space invites children to explore, follow their passions, and nurture their curiosity, supporting them in developing a strong sense of self. The variety of textures provides a unique sensory experience, perfect for developing minds.





- Safety is key when considering the environment for our young children, and we go the extra mile to **ensure cleanliness** and **hygiene**.
- We select **eco-friendly, non-toxic** resources and cleaning products.
- Our spaces are **climate-controlled**, and air filters are placed throughout the site to protect your children's well-being.
- **Fresh, filtered** water is always available.
- Each room incorporates **soft, dimmable lighting** and is designed to **maximise natural light**, supporting mental and physical health.





We recognise the importance of access to the outdoors. In addition to outdoor learning in our courtyard gardens, our children enjoy daily outings to either Queen Elizabeth Olympic Park or Victoria Park, where we also hold our Forest School sessions.







# Team

Our passionate teaching team is at the heart of MEplace, with the majority holding education and psychology (or related) degrees. We emphasise the importance of **quality interactions and relationships** between children and educators. All staff receive **bespoke training** to develop their practice and introduce them to our unique ethos. Our ongoing training programme ensures that our teachers deliver the highest quality education and foster healthy habits in our young learners.

The success of any educational and childcare approach is highly dependent on its people, and therefore we take extra care to hire people with the **relevant knowledge and skills**, who **care deeply**, and who can **lead by example**. We champion the 'superpowers' within each member of the team!





Olivia  
MEbaby Nursery Manager

Hi, I'm Olivia, and I've been a proud member of the MEplace team since July 2021. My journey started as a Nursery Coordinator, and more recently I was the Sales and Customer Service Manager. Now, I'm proud to be the Nursery Manager at MEbaby!

In my role as Nursery Manager, I work closely with the team and the parent community. If you have any questions or requests, I'll always be happy to help you. In my downtime, you'll find me unwinding at home, cooking, cycling, and tending to my personal plant nursery. I look forward to continuing this journey with you and your little ones at MEbaby!

My name is Ogoko – Oge for short! I've been a dedicated Early Years educator for over eight years, moving from Nigeria to Dubai and now to London. A passionate, lifelong learner, I'm known for creating engaging, child-led learning environments which foster creativity and curiosity.

Alongside my professional expertise, I enjoy a diverse set of hobbies: for instance, I am an avid reader, traveller and writer. I'm looking forward to indulging my love for the outdoors by exploring the local parks with the children.



Oge  
MEbaby Deputy Manager





Eszter  
MEbig Nursery Manager

Hello, I'm Eszter, and I'm delighted to introduce myself as the Nursery Manager for MEbig. I collaborate closely with the management team and HQ to ensure the seamless functioning of our nursery. I'm passionate about supporting children's development in their formative years, and bring a wealth of experience to the role. I'm here to support our MEplace families in any way throughout their child's educational journey – please just ask and I'm always here to help! Outside of work, I cherish moments spent with my family and friends. I love exploring new destinations, indulging in movie nights, attending Pilates classes, and even horse riding whenever possible.

Hi, I'm Junior, and I'm honoured to have been a dedicated member of the MEfamily for many years. With over five years of experience in early years, education and the joyful role of being a father to two children, nurturing young minds is not just my profession but a heartfelt passion. In my role as MEbig Deputy Manager, I work alongside Eszter to ensure the smooth and safe operation of our nursery on a daily basis. You'll also find me down at the Forest School site – I'm proud to be the Forest School Leader for MEbig. Outside of education, I enjoy playing the guitar, playing football and cooking. I look forward to supporting our families and working together to provide the best possible care and education for our children.



Junior  
MEbig Deputy Manager





# Our Programme

Our unique approach is informed by scientific research into paediatric neuroscience, child development, psychology and language development. We follow the works of Dr Daniel Siegel, Dr Violet Oaklander, Maria Montessori and Professor Steven Pinker, all while taking inspiration from the Finnish approach to education which recognises that learning occurs through play.

We ensure that children are provided every **opportunity to develop the skills and qualities we value**, while also **meeting the statutory guidance set out in the EYFS framework**. This offers a holistic approach to growing up which nurtures children's concept of self, helping them to **love their ME!**







We need to better prepare our children for the needs of the modern world, which is why we've developed a bespoke curriculum.

### The Golden Thread

Our curriculum takes a holistic approach to early education, pursuing values over goals, and ensuring a **personalised** and impactful journey of development for every child. We call our educational programme the 'Golden Thread', as it weaves a path throughout our young learners' MEplace experience from start to finish. The Golden Thread **integrates EYFS early learning goals and age-related expectations with our MEplace values**, underpinned by our core pillars of **Mind, Body, People, Life, World** and **Fun**.

Our intention is to nurture conscious, kind human beings. The Golden Thread supports children in building trustful, caring and respectful relationships, while valuing individuality and learning about the self. We foster awareness of the alignment between body and mind, offer opportunities for connection with nature, and encourage children to be focused and curious. By focusing on these qualities, our teachers help to lay the foundations for your child's future, and spark a lifelong love of learning.

### Outings

At MEplace HWK, the children participate in daily outings to Victoria Park, Olympic Park (both a 10-minute walk from our doors) and other places of interest in the local area. These outings enrich their learning experiences and offer opportunities for hands-on learning and exploration, connecting children with nature and the world around them.

### Extracurriculars

Supporting our core curriculum, we also offer daily enriching extracurricular activities including **yoga, mindfulness, music, creative dance, sports, STEM, cookery, Spanish** and a **Forest School** programme. These sessions are taught by specialist teachers, and support each child in developing a broad range of skills and interests.



Each room builds upon the foundations of the previous one, nurturing your child’s growth in skills and values.

8:00am	Child-Initiated Play	Welcome - let’s get started!
9:00am	Breakfast	Nutritional meal to fuel our fun
9:30am	Circle Time & Mindfulness	Gratitude & mindfulness What are we learning today?
10:00am	Focused Learning	Let’s learn something new
10:30am	Extra-Curricular Activity	Yoga/Mindfulness/Music/Creative Dance/Sports/STEM/Spanish/ Cooking
11:30am	Lunch	Nutritional meal to fuel our fun
12:30pm	Sleep Time/Story Time	Time to relax and unwind
12:30-2:00pm	Child-Initiated Play	Stations to explore
2:30pm	Outing/Forest School & Snack	Let’s go on an adventure!
4:30pm	Story Time/Focused Learning	Let’s learn something new
5:00pm	Dinner & Child-Initiated Play	Nutritional meal to fuel our fun
6:00pm	Home Time	We can’t wait to see you again!



Yoga



Our yoga sessions (for children aged 2 and above) focus on **physical development and emotional wellbeing**. Through gentle stretches and poses, these sessions improve gross motor skills, coordination, balance and flexibility, nurturing a healthy foundation for young bodies.

Beyond the physical benefits, the sessions promote self-awareness, emotional regulation and confidence. Guided by mindfulness and body-awareness practices, children learn to connect with their inner selves, fostering a sense of empowerment and self-esteem. These yoga sessions offer more than just exercise; they provide a nurturing space for holistic growth, helping children cultivate resilience and inner peace from an early age.

Music

We believe that music **stimulates a child’s creativity and nourishes their inner self**.

Through gentle melodies and harmonious rhythms, children learn to appreciate the beauty of sound while also sharpening their cognitive skills. Music supports language development, enhances memory retention, and cultivates a keen sense of concentration, laying a strong foundation for future educational success.

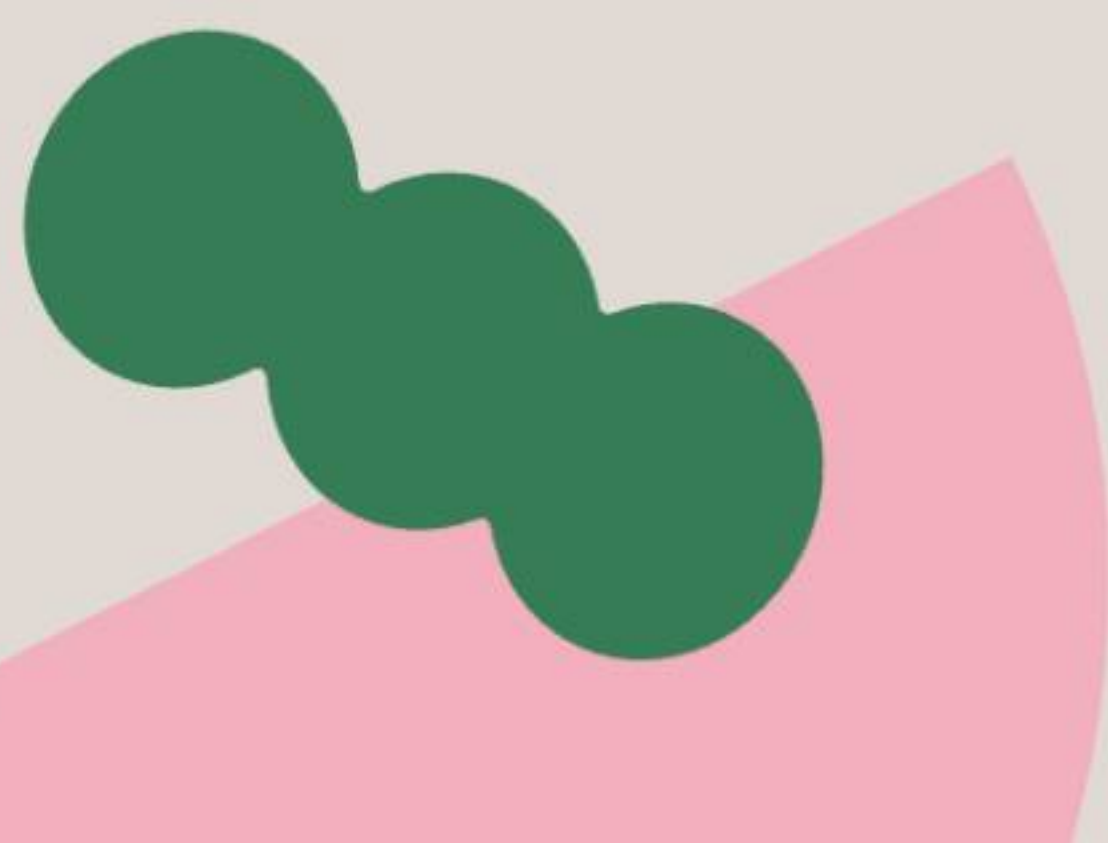
Music is a physical journey, guiding little hands and feet in a dance of coordination and grace – engaging both fine and gross movements with every note played and each step taken.

Sports

Sports are a recreational way to encourage your child to **develop their physical, social, and emotional skills, all while having fun!**

Children engage in physical activities that enhance gross motor skills, coordination and balance, laying the foundation for a healthy, active lifestyle. Our sports sessions are more than just physical exercise, allowing for cognitive growth too. Through problem-solving challenges and focused activities, children sharpen their concentration, teamwork, and grasp of fundamental rules, instilling values of fair play and cooperation.

Within the group dynamic, children practise their communication skills, learning to collaborate effectively and express themselves clearly. These sessions provide invaluable moments of achievement, as children set and surpass goals, master new skills, and take pride in their accomplishments.





STEM

A dynamic blend of hands-on activities and interactive learning experiences which **ignite curiosity**.

Introducing Little STEAMers, where learning becomes an adventure with engaging activities tailored to spark curiosity and ignite passions. Each session is designed to keep little minds active and engaged. Classes feature dynamic activities from physical warm-ups to captivating stories and songs, followed by hands-on experiments. With over 50 topics, including dinosaurs, space, and rainbows, there's something to intrigue every young explorer.

Rest assured, Little STEAMers is crafted by early years experts and is teacher-approved for your child's developmental journey.

Spanish

A fun-filled journey of language exploration, where children will discover the wonders of languages, **setting them on a path to multilingual success**.

Spanish is one of the most widely spoken-languages in the world. Weekly Spanish language sessions provide a wealth of benefits for children's development. Exposure to a second language in the early years enhances cognitive skills, facilitates future language acquisition, and fosters cultural appreciation.

Furthermore, learning a second language requires the use of memory and concentration, which can help to improve these skills in children.

Cooking

Through exposure to the joy of cooking, we aim to **create a lifelong passion for food, nutrition and healthy eating habits** in our little chefs. These sessions are more than just cooking; they are opportunities for children to develop essential life skills. From measuring ingredients to following recipes, children enhance their **coordination, creativity and confidence** in cooking.





Forest School

An unforgettable journey of discovery, empowering children to **connect with nature and become stewards of the Earth.**

Forest School sessions immerse children in the wonders of nature, fostering a deep connection to the outdoors and igniting a sense of curiosity and exploration. From nature walks to scavenger hunts, children gain hands-on experiences like building dens, exploring wildlife habitats, and learning about plants and trees. Forest School participants develop an appreciation for the outdoors and gain valuable skills in teamwork, problem-solving and resilience.

Creative Dance & Drama

Sessions designed to cultivate and inspire boundless **creativity and self-expression through movement and storytelling.**

We've partnered with Wee Movers to introduce our little ones to the joy of exploring and connecting through creative dance. At **MEbig**, over 2s enjoy moving their bodies, discovering rhythm, and expressing themselves through graceful gestures and playful dances.

During drama sessions, children embark on thrilling adventures as they act out stories, assume roles, and immerse themselves in imaginative play. From dressing up to improvising scenes, these sessions ignite young imaginations and foster confidence in communication and expression. Join us in nurturing a love for the arts in our youngest learners.

Check out our Forest School reel  on Instagram!



@meplace.co





# Food

We see food as more than fuel; nutrition plays a vital role in mental and physical health. MEplace is fully **plant-based**, with healthy meals created with **high-quality**, **seasonal** and **mostly organic** ingredients.





# Good nutrition is vital, but so often overlooked in education.

We have a full-time **certified nutritionist** on site who designs the menus and breaks down every meal, every day for each weekly menu, based on **macro- and micro-nutrients** as well as the **biochemistry** of the meal. We don't use **refined sugar, gluten or anything processed**, and safety is our utmost priority when handling allergens. We work closely with parents to understand each child's specific dietary requirements, and implement safety measures accordingly.

Every meal, from early morning snacks to light dinner in the evenings, is crafted in our on-site kitchen, **prepared daily** and delivered fresh.

Our **Head Chef, Lucia**, has a wealth of experience as a professional chef, with a background working in fine dining restaurants as well as for Deliciously Ella!



All MEplace meals are crafted from scratch each day – our bespoke plant-based menu delivers meals rich in nutrients, flavours and colours.

Snack	Pear	Pear	Portion 60g Calories 30kcal
Breakfast	GF Fluffy Blueberry Pancakes with Almond and Coconut Sauce	Hemp seed milk, flax seeds, buckwheat flour, baking soda, chia seeds, raw apple cider vinegar, natural vanilla extract, banana, extra virgin olive oil, almond butter, maple syrup and pink Himalayan salt.	Portion 65g Calories 211kcal
Lunch	Creamy Tomato Brown Rice Pasta	Chopped tomatoes, onion, oat milk, tapioca flour, nutritional yeast, tomato paste, fresh lemon juice, fresh basil, fresh oregano, brown rice pasta, black pepper, olive oil and pink Himalayan salt.	Portion 200g Calories 334kcal
Snack	Carrot Cake Cookies	Apples, banana, carrots, gluten-free oats, cranberries, dates, almond butter, coconut oil, cinnamon, nutmeg, and ginger.	Portion 80g Calories 142kcal
Dinner	Green Lentil Stew with Brown Basmati Rice	Green lentils, onion, garlic, leeks, carrots, courgette, green beans, white potato, coconut cream, extra virgin olive oil, vegetable stock, cumin, coriander, cardamom, bay leaf, black pepper and pink Himalayan salt.	Portion 260g Calories 289kcal



# Community

Community culture at MEplace is deeply rooted in our core values, creating a vibrant atmosphere of belonging. We are proud of our truly **inclusive community**, where everyone can thrive and where **difference is celebrated**.





# Stay informed and connected through a variety of communication channels designed to keep you in the loop.

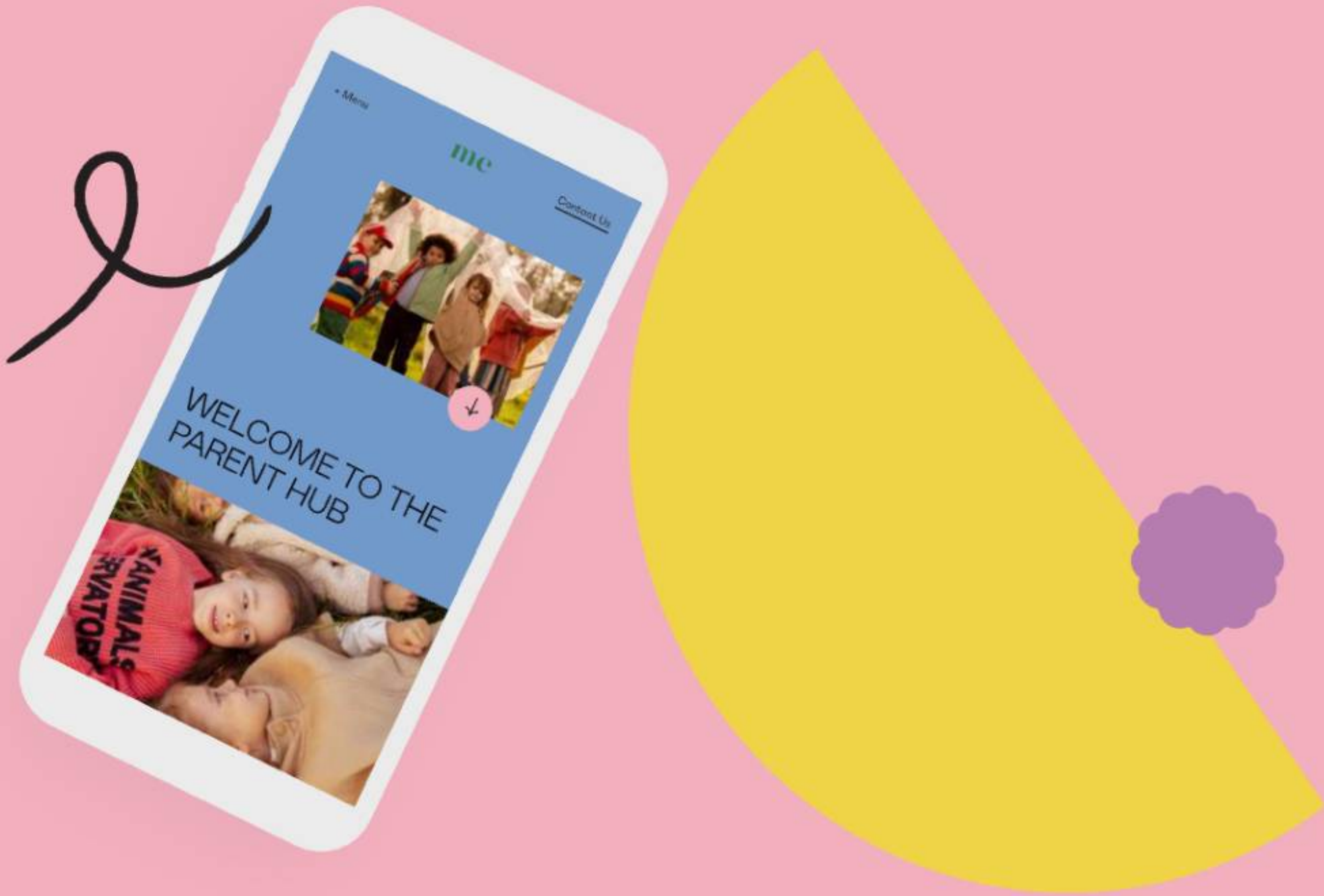
We want to make sure all of our children benefit from a consistent, collaborative approach, and with this in mind we developed our **Parent Hub** – a one-stop shop for all things MEplace. Here, parents can learn about our teaching philosophy and approach, access educational webinars, and keep up to date with nursery developments.

Our **webinars** include a range of topics requested by you – including nutrition, child language development, emotional regulation and lots more. Based on the success of these webinars and the positive feedback from our community, our **Parent Academy** (and equivalent Teacher Academy) is in development, ensuring we’re all equipped with the best strategies from the latest research in our shared mission of supporting your child’s development and wellbeing.

Our teaching team are always on hand to discuss your child’s development. Through the **Famly** App, parents receive **daily posts with photos and videos**, offering a heart-warming glimpse into their little one’s day. Teachers also provide **weekly reports** for each child, covering their learning progress, next steps for development, and any milestones or achievements such as new friendships.

Parents can track their child’s educational journey against age-related expectations with our **termly Learning Journey reports** from teachers, and have the opportunity to discuss these in more depth in 20-minute **virtual meetings**.

And of course, we’re always here for **face-to-face discussions at drop-off and pick-up**, whether it’s an overview of your child’s day or answering any questions you may have. And if you just fancy a chat, our door is always open!



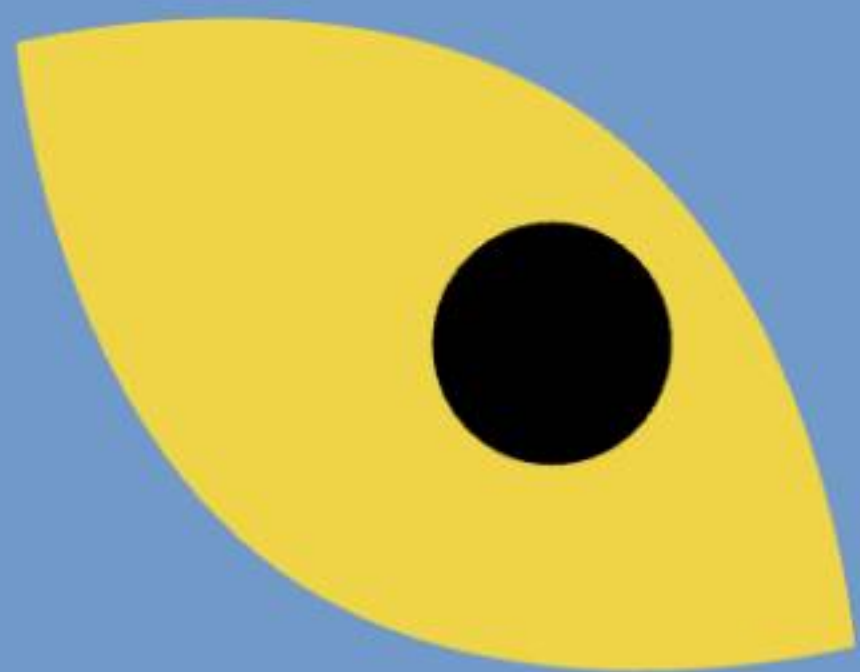




# Our MEfamily is a source of community, resources and support.

At MEplace, we recognise that **our families are the heart of everything we do**. That's why our team is dedicated to arranging a host of **events** which bring together our whole community. Our lively **summer party and preschoolers' graduation** has become a highlight of the calendar, while our festive **winter party** connects our teachers, parents and learners in a celebration of the year. We host **monthly coffee mornings**, fostering connections among parents, while our **regular parent meetings** provide real-time updates and give you the chance to make your voice heard. There's also the opportunity to join our proactive **Parent Committee** - ensuring that your feedback shapes our future practice. We welcome families to join us at the end of each **Forest School cycle for a collaborative session**, so that you can view our woodland adventures through your child's eyes.





A PLACE FOR COMMUNITY

From seasonal parties to parent webinars, monthly coffee mornings to the Parent Committee, there’s so many ways to get involved in the MEcommunity.

[Explore MEworld ↗](#)





# Memberships

We understand the challenges of balancing work commitments with parenting.

That’s why, with busy parents' lifestyles in mind, we've carefully crafted a range of membership options (alongside flexible drop-off and pick-up), tailored to suit varying schedules and needs.





# Memberships for 1-2s age group

Memberships	Fees Without Funding	Fees With 30 Free Hours*
Full-time (Monday to Friday)	£2,210/month	£766.95/month
Part-time (4 full days)	£1,768/month	£324.95/month
Part-time (3 full days)	£1,326/month	£112/month

MEplace nurseries accept **15 and 30 free hours** childcare funding for all age groups in line with local council rollouts. You can pay towards your child’s membership through the **HMRC tax-free childcare** portal (-20%), and we also work with **all major childcare voucher providers**.

MEplace offers a **10% sibling discount** which is applicable for as long as you have two or more children attending our nursery settings (or MEclub). The 10% discount is applied monthly to the invoice for your older child or child with a lower monthly fee rate.

We also offer a **‘refer-a-friend’ credit of £100** for you and your friend. This applies to referrals for new families who are not yet part of our MEcommunity. If you know a family interested in joining us at our Hackney Wick nursery or another site, please send them our way!

\*Please be aware that the fees with funding are based on Tower Hamlets Council rates, which may change each term. We inform parents of any adjustments well in advance.



# Memberships for 2-3s age group

Memberships	Fees Without Funding	Fees With 30 Free Hours*
Full-time (Monday to Friday)	£2,210/month	£1,155.50/month
Part-time (4 full days)	£1,768/month	£713.50/month
Part-time (3 full days)	£1,326/month	£271.50/month

MEplace nurseries accept **15 and 30 free hours** childcare funding for all age groups in line with local council rollouts. You can pay towards your child’s membership through the **HMRC tax-free childcare** portal (-20%), and we also work with **all major childcare voucher providers**.

MEplace offers a **10% sibling discount** which is applicable for as long as you have two or more children attending our nursery settings (or MEclub). The 10% discount is applied monthly to the invoice for your older child or child with a lower monthly fee rate.

We also offer a **‘refer-a-friend’ credit of £100** for you and your friend. This applies to referrals for new families who are not yet part of our MEcommunity. If you know a family interested in joining us at our Hackney Wick nursery or another site, please send them our way!

\*Please be aware that the fees with funding are based on Tower Hamlets Council rates, which may change each term. We inform parents of any adjustments well in advance.



# Memberships for 3-4s age group

Memberships	Fees With 15 Free Hours*	Fees With 30 Free Hours*
Full-time (Monday to Friday)	£1,825.30/month	£1,440.50/month
Part-time (4 full days)	£1,383.30/month	£998.50/month
Part-time (3 full days)	£941.30/month	£556.50/month

MEplace nurseries accept **15 and 30 free hours** childcare funding for all age groups in line with local council rollouts. You can pay towards your child’s membership through the **HMRC tax-free childcare** portal (-20%), and we also work with **all major childcare voucher providers**.

MEplace offers a **10% sibling discount** which is applicable for as long as you have two or more children attending our nursery settings (or MEclub). The 10% discount is applied monthly to the invoice for your older child or child with a lower monthly fee rate.

We also offer a **‘refer-a-friend’ credit of £100** for you and your friend. This applies to referrals for new families who are not yet part of our MEcommunity. If you know a family interested in joining us at our Hackney Wick nursery or another site, please send them our way!

\*Please be aware that the fees with funding are based on Tower Hamlets Council rates, which may change each term. We inform parents of any adjustments well in advance.





# How to Join MEplace

Become part of the MEfamily today!



[Enquiry Form ↗](#)

Enquire



- **Complete the Enquiry Form:** Fill out the short enrolment form above to officially express your interest. You can also select a time slot for a personal tour.
- **Visit the Space:** We always recommend to visit the space prior to securing your spot. However, if you would like to move forward without a tour, please let us know.
- **Receive an Offer:** We will send you an offer and additional steps required to secure your space.

Your Offer



- **Accept the Offer:** Complete the steps outlined in the email within three days of receipt.
- **Deposit Payment:** Pay a £400 refundable deposit\* to reserve your place and a non-refundable £100 administration fee.

*\*All deposits are refunded within 14 days after your final session.  
\*To qualify for a full refund, you must settle all your fees and give us 2 months' written notice of termination.*

- **Confirmation of Place:** Await your 'It's Official ❤️' email, confirming your place is secured!





# FAQs

Check out our list of questions and informative answers. We're here to make sure you have all the information you need.

And if you have any more questions, please do not hesitate to reach out to us at [enrolment@meplace.co](mailto:enrolment@meplace.co).

We're always happy to help!





## MEplace FAQs - About Our Nursery

What sets your nursery apart from others in the area?

Our commitment to mental and physical health in the early years.

We promote the development of mental and physical health in the Early Years through:

**Teacher Qualifications and Training:** Approximately 30% of our teaching staff hold degrees in Psychology. Our dedicated teachers undergo specialist training in early childhood psychology. The relationship our teachers build with your child will be warm, caring, and built on a foundation of expertise.

**Activities:** Beyond fostering academic excellence, we prioritise life skills through daily mindfulness and gratitude practices. Mindfulness is woven into the daily routine of all children. Our approach evolves as they grow: younger ones engage in sensory exploration, while our 2-year-olds begin to practise emotional regulation through breath techniques. Preschoolers participate in gratitude sessions to cultivate appreciation.

We offer weekly extracurricular activities, such as yoga, music, and sports, led by qualified teachers. These activities ensure a well-rounded education tailored to each child's needs.

**Environment:** From eco-friendly nappies and wipes to non-toxic cleaning products, we carefully select all of our resources, seeking not only to provide the highest quality of care but also to consider our impact on the planet.

**Nutrient-Rich Food:** We source top-quality seasonal ingredients from ethical farms. Our fully plant-based menu is both delicious and nutritious, carefully designed for your child by our in-house nutritionist.



## MEplace FAQs - About Our Nursery

Can you provide information about the curriculum or educational philosophy followed at the nursery?

**We focus on values rather than goals.**

At MEplace, we have designed a curriculum that covers the Early Years Foundation Stage Learning Goals and nurtures kind, conscious human beings.

Our unique approach is informed by research into paediatric neuroscience, child development, psychology, learning sciences and language development. We follow the works of Dr Daniel Siegel, Dr Violet Oaklander, Maria Montessori and Professor Steven Pinker, all while taking inspiration from the Finnish approach to education, where learning occurs through play.

Considering the needs of the modern world, we developed a bespoke curriculum centred around six pillars: Mind, Body, People, Life, World and Fun. Through these, we offer a holistic approach to growing up that nurtures children's concept of self, helping them to love their ME!



## MEplace FAQs - Ofsted Registration & Ratio

Are you Ofsted Registered, and have you had an inspection?

Yes.

Our first nursery, 'MEbaby', has been open in Hackney Wick since November 2020, and was inspected by Ofsted in October 2022. We continue our commitment to excellence.

As we are an Ofsted-registered provider, we focus on all areas of learning to ensure children are well-prepared for school. We connect activities to a monthly topic to expand the children's general knowledge and always make learning fun! We have had one group of graduates who are excelling at Mossbourne Academy and other local public and private schools, showcasing the effectiveness of our approach.

What is the child-to-caregiver ratio in each age group?

We follow legal guidelines.

For children under two years, the ratio is 1:3. For ages 2 to 3 years, it's 1:5. And for children over three years, the ratio is 1:8.



## MEplace FAQs - Nursery Hours

**What are the nursery's operating hours?**

The nursery is open 5 days a week from 7:30am to 6:30pm, Monday-Friday. From January 2026, our hours to 8:00am to 6:00pm, `Monday-Friday.

**Can I choose to bring my child in later or pick up earlier?**

Yes. MEplace memberships allow flexible drop-off and pick-ups within the nursery's opening hours. Most children are in by 10:00am daily. If you want to bring your child in later or start your weekend earlier, that's perfectly okay! Please inform your child's teachers by sending them a quick message on Famly.

**Is the nursery open on UK bank holidays?**

No. The nursery is closed on all UK bank holidays. These dates are available to view on the Famly App Calendar.

**Does the nursery have any planned closures other than the bank holidays?**

Yes. We have six annual inset days at the end of August and December to maintain and refurbish our nurseries. These dates have already been taken into account when calculating the fees. Please view the Famly App Calendar for more details.



## MEplace FAQs - Memberships & Attendance

What is included in the memberships? Are they different from other nurseries?

### All-inclusive memberships.

Our fees at MEplace are fully inclusive. Unlike many other nurseries, our all-inclusive membership covers all expenses, including meals, snacks, organic oat milk for younger children, eco-friendly nappies and wipes, extra-curricular activities and educational visits.

Is there a minimum number of days my child must attend nursery?

### 3-day minimum attendance.

We want your child to fully benefit from our programme, so we have set a minimum attendance requirement of three days per week. We provide three different attendance patterns for the nursery, each with a different monthly rate.

Does MEplace offer half-day sessions?

### No.

We only provide full-day sessions. We believe this approach enhances children's education by allowing them to participate in educational visits, local outings, extracurricular activities, and focused activities that may be missed during half-day attendance.



## MEplace FAQs - Discounts & Funding

Do you accept tax-free childcare?

Yes.

We accept tax-free childcare as a payment method and encourage parents to use tax-free childcare to pay monthly fees. Please note that this can also be used alongside 15/30 free hours of childcare funding.

First, you will need to [apply for tax-free childcare](#). Once your account is set up and completed, you can find MEplace by searching for the postcode or the Ofsted registration number to complete your application.

Do you accept childcare vouchers?

Yes.

We gladly accept childcare vouchers. If you cannot find us listed with your voucher provider, our nursery may not be registered with them yet. If you have any enquiries or need assistance with voucher payments, please contact our Sales and Customer Experience Manager at [olivia@meplace.co](mailto:olivia@meplace.co).



## MEplace FAQs - Discounts & Funding

Do you offer a sibling discount?

Yes, 10% discount per month.

This discount applies as long as you have two or more children attending MEplace Nursery or MEclub. The 10% discount is applied monthly to the invoice for your older child or child with a lower monthly fee rate.

Do you offer a referral discount or credit?

Yes, we offer a £100 credit.

If your friend is offered a place and accepted at the nursery, you and your friend will each receive £100 referral credit on your Family Account. Please get in touch with our Sales and Customer Experience Manager at [olivia@meplace.co](mailto:olivia@meplace.co).

Does the nursery accept free hours of childcare schemes available to parents?

Yes.

Beginning in the Summer Term of 2024 (April), we welcome all children eligible for the Expanded 2-year-old Entitlement. Additionally, from the start of the Autumn Term (September) 2024, we will accept children eligible for the Expanded Under 2-year-old programme. Furthermore, we accommodate children over the age of three for both 15 and 30 free hours.



## MEplace FAQs - Enrolment & Deposit

Can parents visit the nursery before enrolling their child?

Yes, of course.

Once you've registered your interest, our team will contact you to invite you to our next scheduled parent tour. During your visit, you'll have the opportunity to see our facilities, get a sense of our environment, and ask any questions you may have. We'll also guide you through the next steps to secure your child's place at our nursery.

Is there a registration fee or deposit to secure a spot for my child?

Yes.

To secure your place, a £400 deposit is required in accordance with our Terms and Conditions (available to view on our website). A £100 non-refundable admin fee is also associated with every reservation.

Can you explain your 12-month minimum registration period in more detail?

End your contract anytime.

Our 12-month minimum contract is due to us not offering short-term childcare. However, parents can cancel their contract at any time by providing at least two months' notice via email. Your deposit will be refunded within 14 working days after your child's last day at MEplace, minus any fees or costs you may owe us.



## MEplace FAQs - Extracurricular Activities & Outdoor Learning

Do you offer any extracurricular activities?

Yes, we offer a variety of extracurricular activities to all ages.

All age groups have an opportunity to participate in Music, Sports, Yoga, and Forest School sessions termly. For children over 2, they begin to learn Spanish, STEM, Cooking, Dance, and Drama. All our extracurricular activities are led by teachers with formal qualifications in these subjects.

Is there an outdoor space for children to engage in outdoor activities?

Yes.

We proudly offer a dedicated outdoor space where children can explore, play, and learn in a natural environment. Our outdoor area is thoughtfully designed to stimulate curiosity, promote physical activity, and encourage social interaction among children. It includes features such as play structures, gardens, sandboxes, and open spaces for creative play.

Are there outings or trips included in the nursery's curriculum?

Absolutely!

We believe that outdoor experiences are important for a child's development. As part of our curriculum, we organise regular outings and educational trips. These outings allow children to connect with nature, learn about their environment, and develop valuable skills such as teamwork and problem-solving. Safety is our top priority, and a thorough risk assessment is conducted before children go on an outing.



## MEplace FAQs - Food

### Why Plant-Based?

At MEplace, we've embraced a plant-based approach to nutrition for several reasons. Firstly, sourcing high-quality animal products has become increasingly challenging, raising concerns about their safety and environmental impact. By focusing on plant-based options, we ensure a consistent supply of nutritious ingredients while reducing our reliance on resource-intensive animal agriculture.

**Additionally, our plant-based menu reflects our commitment to both the wellbeing of our children and the planet.** Backed by scientific research, we prioritise the bioavailability of essential nutrients from plant sources, promoting healthy growth and development. Furthermore, by choosing plant-based ingredients, we significantly reduce our carbon footprint and support a more sustainable and eco-conscious way of living.

### How many meals and snacks are provided at the nursery?

**We offer five nutritious meals daily.**

All children have a morning fruit snack, breakfast, lunch, afternoon snack, and a light dinner. There is a 3 to 3.5-hour break between meals, and children also have access to filtered water throughout the day.

### Do you accommodate allergies, dietary restrictions or preferences?

**Yes.**

We promptly notify our chefs upon receiving information on allergies or dietary requirements. They will then craft a specialised menu tailored to your child's needs, which will be shared with you and your child's teachers.



## MEplace FAQs - Community

How does the nursery communicate with parents throughout the day?

We communicate with parents through the **Famly App**, which features a layout similar to Facebook with a timeline, profile, and messaging options. Famly keeps parents informed and engaged by providing real-time updates on all aspects of their child's day

**Status Updates:** We keep you informed with real-time updates on your child's arrival and departure, outings, nappy changes, sleep times, meals, and any accidents. If an accident occurs, we will call you immediately and update the app to ensure complete transparency.

**Daily Updates:** Teachers share daily summaries, with photos and videos, about what the children have been up to during the day. These updates offer a glimpse into your child's experiences at the nursery.

**Weekly Updates:** We provide child-specific weekly updates. These summaries cover how the week went, your child's overall feelings, activities they enjoyed, and any new friendships formed.

**Learning Journeys:** Teachers also provide termly reports that focus on your child's development and the milestones they've achieved across all areas of learning, along with the next steps for their progress. Additionally, you will have a 20-minute virtual meeting with your child's teacher to discuss the report in detail.



## MEplace FAQs - Community

How do you promote diversity?

Our team members and families at the nursery.

Our team members and families come from various backgrounds and cultures, representing the diversity of London. We celebrate this diversity by incorporating it into our resources, books, and topics of the month. Through inclusive discussions, we foster an environment where children can learn about and appreciate different cultures, traditions, and perspectives.

How can parents get to know each other?

There are many ways!

We regularly host **monthly parent calls** to share nursery updates and encourage open communication. This is an excellent opportunity for parents to ask questions, share feedback, and stay connected with what's happening at the nursery.

We also organise **monthly coffee mornings** at a local cafe. These relaxed gatherings provide a warm and friendly atmosphere for parents to bond and build friendships.

Additionally, we are proud to have our **Parent Committee**, which consists of enthusiastic volunteers from our parent community. This committee plays a crucial role in collecting feedback and nurturing stronger bonds between families and our team. Their commitment ensures that our nursery maintains its vibrant and inclusive atmosphere, where every opinion is respected and valued.

We also love celebrating special moments together! **We throw unforgettable parties—our Summer and Winter Parties.** These festive occasions unite our nursery community, creating lasting memories for children and parents.



BECOME A MEMBER

# Join the MEfamily

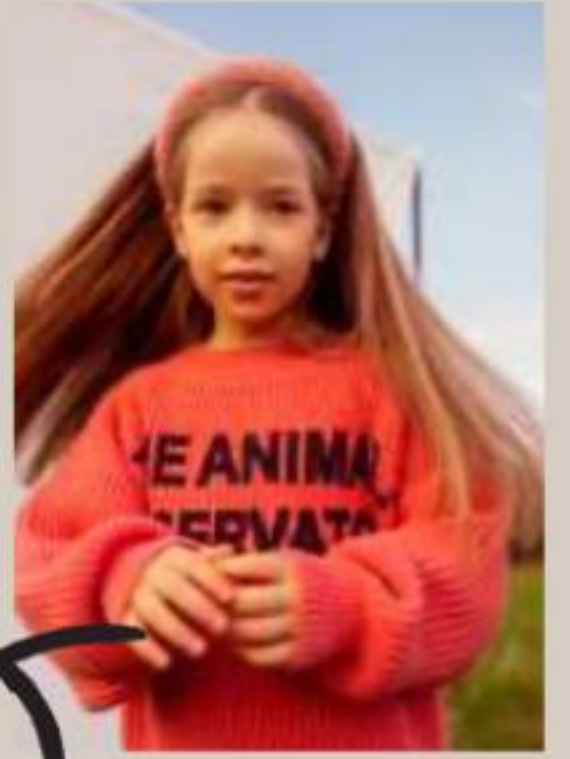
When you're ready, complete this brief form to kick things off.

[Enquiry Form ↗](#)



# After-school & holiday club

Wrap-around care for  
primary school  
children aged 4-11



open 50 weeks a year

fun  
activities

during term time  
3:30pm – 6:00pm

9:00am – 6:00pm  
during holiday time

qualified teachers

healthy  
meal  
included





# An opportunity for children to unwind, build friendships and, above all, have fun.

We know all too well the delicate balancing act parents perform: juggling clubs, finding babysitters, or rushing to the school gates because a meeting overran...

Trust us, we've been there too! So, after countless requests from our MEplace graduates, we are absolutely thrilled to **expand our offering to school-aged children.**

Picture this: **your child is met at the school gate** by our dedicated team of teachers. Together, they travel to our warm, cosy, dedicated club space, filled with all the toys, games and activities your child could want. Surrounded by friends, they'll enjoy a **delicious, freshly made, plant-based meal**; try their hand at yoga; get moving in drama and dance; or even have a go at coding. It's a time for them to build those lifelong friendships.

Now the **holidays are sorted.** Every time. And for those precious moments when you need a breather - whether it's a spa day, catching up with friends, or just some solitary wall-gazing - our after-school and holiday club is here.

## ABOUT THE SPACE

Our dedicated MEclub site for our older children is designed for maximum safety and fun, with plenty of resources to enrich your child's experience.

## OPENING TIMES

We're open 50 weeks a year, giving you back plenty of time both during term time & school holidays.

## OUR TEACHERS

Our educators are experienced and caring, so you can rest assured that your child will be in capable hands.

## ALL-INCLUSIVE

Your child can engage in a wide range of exciting activities like yoga, drama, dance, and music. They will also enjoy a nourishing and wholesome meal!

## ENQUIRE NOW

We have different memberships available priced at £40/pick up and £80/full holiday day.

View [our website](#) for more information about MEclub Hackney Wick.