

Teacher Aide – Secondary

Candidate Application Pack



**THE
YOUNITY
SCHOOL**

A GREAT PLACE TO LEARN



ABOUT THE YOUNITY SCHOOL

A great place to learn

Moreton Bay's only independent special assistance middle school. For young people aged 10 to 15 years old and their families.

Our mission is to give young people the best opportunity to thrive in middle school and create positive pathways for their future.

At The Yunity School, we recognise the middle school years as one of the most important steps in a young person's journey to meaningful, lifelong engagement with learning.

It's a time when young people begin to experience agency, ownership and independence in their education, develop a sense of self and connection to the world, and begin to explore exciting possibilities for the future.

Yet many young people disengage from their education and learning journey during this step—especially those with complex learning and social support needs or who experience educational disadvantage.

At The Yunity School, we aim to support all young people and their families to engage or reengage with school, successfully navigate the middle years, and face their future with confidence, resilience and pride.

Belong

Creating a proud sense of connection and community at school—and a collaborative network of support outside the school gates.

Learn

Delivering engaging, innovative and flexible education programs that are responsive to individual learning needs and education goals.

Thrive

A place where students and their families can find inspiration and support to rise to the challenge of life and realise their potential.

OUR VALUES

We focus on what is strong – Celebrating resilience in the face of challenges, developing our unique strengths and facing the future with confidence and positivity.

We are lifelong learners – Developing curiosity, creativity, wonder and a lifelong love of learning as fundamental tools to living a rich and thriving life.

We learn and grow together – Embracing parents and families as partners in learning who can grow and develop together with young people and who have the unique role of passing on values and culture.

We celebrate diversity and difference – Recognising the unique contribution of every individual and celebrating diversity and difference as part of the fabric that strengthens our communities.

We care about ourselves and others – Knowing that academic success starts outside the classroom, and we develop our emotional and physical well-being—and support others to do the same.

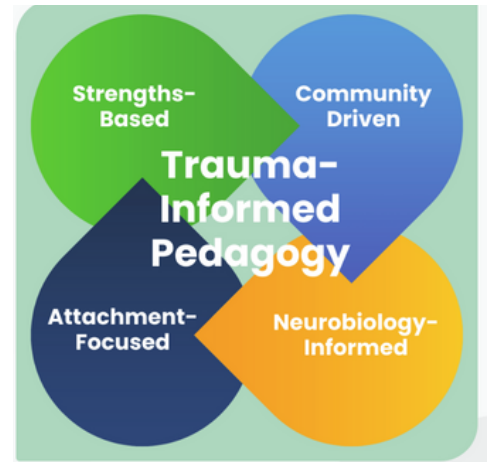
We are a community – Coming together as young people, families, staff and community members to co-create the best programs, networks, pathways and opportunities as a community.

OUR LEARNING MODEL

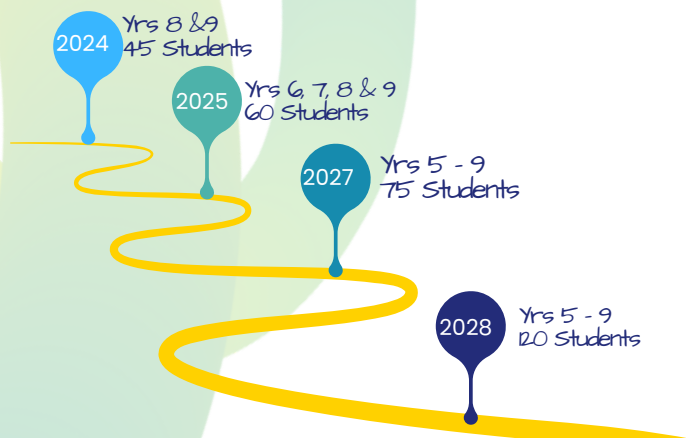
Creating Trauma-Informed Strengths Based Classrooms

At The Yunity School, we aim to be a centre of excellence in special assistance education by delivering programs that support children to build their self-regulatory capacities, to develop a sense of relatedness and belonging at school, and to integrate wellbeing principles that nurture growth and identify strengths.

Drawing on evidence-based models, including Berry Street Education*, our classrooms nurture our students' well-being and enhance their willingness to engage in learning, harnessing their strengths for effective learning and future pathways.



ENROLMENT SCHEDULE



A special assistance school for Years 5 – 9

The Yunity School will be welcoming its inaugural student intake in July 2024! We will accept enrolment enquiries specifically for Years 7, 8 & 9 from April 15th. Students must go through a referral process before applying for enrolment at The Yunity School

Over the next four years, our student cohort will extend from Year 5 through to Year 9, supporting 100 young people on their unique paths to success.

Pathway Partnerships will be developed with local learning facilities, including schools, flexi-schools, and further education institutions, that will provide learning options for students past Year 9.

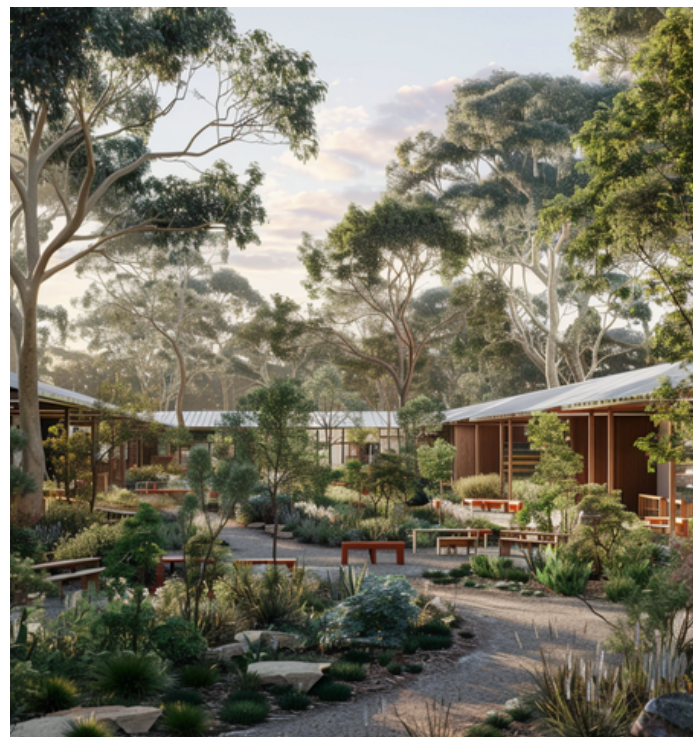
BURPENGARY CAMPUS

The first Yunity School campus is at 45 Pitt Road, Burpengary (about 50km north of Brisbane CBD), where old and new structures will weave together with the natural environment to create a welcoming and inspiring site that will facilitate physical, emotional and psychological wellbeing.

The campus will be developed in three stages, and our team will work closely with the Block Grants Authority to complete the works by 2028.

Stage one – School opens in July 2024 to support 45 students across Years 7, 8 & 9. Development works focus on improving and leveraging existing infrastructure on the school site.

Stages two and three – School extends to support 120 students total from Years 5 to 9 by 2028. Development works include building a range of new facilities and further improving existing infrastructure.



POSITION DESCRIPTION

Teacher Aide – Secondary

OUR INVITATION

As we prepare to open the doors to The Yunity School, we have exciting opportunities for three passionate and skilled Teacher Aides to work with our inaugural student intake, starting in Term 3, 2024.

On 8 July 2024, we will welcome 45 students with one class each in Years 7, 8 and 9, supporting these young people and their families to engage or reengage with school, successfully navigate the middle years, and face their future with a sense of confidence, resilience and pride

This is a unique opportunity to work as a member of our foundation team, helping to shape the school with your passions, talents, and love of learning and to play a pivotal role in our very first students' learning journey.

If you feel ready to embrace the challenges and opportunities of this exciting role, we warmly invite you to apply.

ABOUT THE ROLE

The Teacher Aide role is to support student learning by working collaboratively with class teachers to develop and implement strategies for allowing students to access the curriculum across Key Learning Areas.

You will support the class teachers to provide a learning environment for the physical, intellectual, social, and emotional development of all the students in the class, often acting as additional 'helping hands' in the school and classroom. Specific roles, tasks and responsibilities will be dependent on the:

- specific individual need/s.
- number of students requiring assistance.
- types of programs operating within the class or school.
- level and type of individual support required by a student or group of students for a particular activity at a particular time.
- particular contextual and situation-specific needs.
- number of classes or the number of students with whom the Learning Support Assistant is involved or has been assigned.
- specific goals, objectives and expected outcomes of an individual student's program (the ILP).

We believe workplace diversity sparks innovation and creativity. The Yunity School is a safe, accessible and inclusive workplace for people of all backgrounds. We encourage people from Aboriginal and/or Torres Strait Islander backgrounds with relevant experience to apply.

THIS ROLE WILL SUIT SOMEONE WHO:

is a natural at developing relationships and rapport with staff, students and families.

has a commitment to personal growth and ongoing professional learning.

is a team player who is keen to work with colleagues best to meet the learning and wellbeing needs of individual students.

KEY DUTIES & RESPONSIBILITIES

- Carrying out tasks as determined by the Principal and class teachers to assist students and staff.
- Assisting in the integration and management of students with learning and behavioural difficulties in the mainstream classroom.
- Taking direction from the Principal, class or specialist teachers as to which students require assistance and how this assistance should be delivered.
- Supporting students in developing a growth mindset and a commitment to improvement and personal growth.
- Guiding students in managing classroom expectations, both in terms of academic performance and behaviour, as determined by the class teacher and school policies.
- Alerting appropriate staff to any issues related to the students.
- Liaise with parents when necessary under the direction of teachers and the Principal.
- Carrying out individual and group diagnostic testing of students as directed.
- Supporting the development of adjusted assessment to support student learning.
- Supporting the provision of Disability Adjustments to students in Years 7–9.
- Assisting teachers with the development of differentiated learning resources for students as directed.

EXPERIENCE & QUALIFICATIONS

ESSENTIAL

- Previous teaching or teaching support experience with children.
- Fluent levels of spoken and written English.
- A current Working with Children Check clearance (blue card) issued by Blue Card Services.

DESIRABLE

- Experience working collaboratively with teaching staff in a classroom environment.
- A Certificate III or IV in relevant qualification or commitment to attain.
- Demonstrated equivalent competencies at this grade.

CORE NON-TECHNICAL SKILLS + ATTRIBUTES

- Emotional Intelligence
- Problem-solving, critical thinking and decision-making
- High level of integrity and ethical conduct
- Flexibility and adaptability
- Commitment to The Younity School's core values and organisational culture.

TERMS & CONDITIONS

Program Team:	The Younity School
Reporting to:	Principal, The Younity School
Employment Type:	Full-time or Part-time (21-38 hours)
Reports:	None
Working from:	The Younity School, Burpengary Campus
Probation Period:	6 months
Key Internal Relationships:	Teaching Team, Student Support Team, Younity Program Heads, Youth Services Team, Children & Families Team
Key External Relationships:	Parents, Carers, Families, Community Members, Service Partners, Pathways Partners, Referral Partners, Allied Health Services

WHAT THE YOUNITY SCHOOL CAN OFFER YOU

- Competitive salary and a range of benefits including NFP salary packaging.
- Small class sizes with a high staff ratio.
- A focus on work-life balance, with team building and wellbeing days scheduled in.
- A highly experienced team of educators to offer assistance and guidance.
- Ongoing coaching and mentoring with behaviour strategies and learning design.
- Flexibility to create engaging and innovative lessons.
- A friendly, supportive, and welcoming team.
- Professional development opportunities and role diversity.

APPLICATION PROCESS

STEP ONE

Please submit your completed application form, resume and cover letter document clearly addressing the key skills and abilities (max 2 pages) through our online portal.

<https://www.younityschools.qld.edu.au/about/work-with-us>

Applications for this position will close strictly 10am, Thursday 9th May 2024.

STEP TWO

Panel Interviews will be held for short-listed candidates the week of 13 May 2024.

STEP THREE

Successful candidates will be expected to start the week of 24 June 2024. Some flexibility on this may be negotiated.

For a confidential discussion, please contact David McKay, Principal on 0468382615 or david.mckay@younityschools.qld.edu.au



Younity acknowledges the Traditional Owners of Gubbi Gubbi Country and recognises their rich history and continuing connection to learning, community, land, waters and culture. And we pay our respects to all Aboriginal and Torres Strait Islander Peoples and Elders past, present and emerging.

Younity is committed to embracing diversity and eliminating all forms of discrimination in providing our services and support. Younity welcomes all people irrespective of ethnicity, lifestyle choice, faith, sexual orientation and gender identity.