

Teacher Aides

Permanent Roles Starting January 2026



Candidate Application Pack



**THE
YOUNITY
SCHOOL**

A GREAT PLACE TO LEARN

ABOUT THE YOUNITY SCHOOL

A great place to learn

Moreton Bay's only independent special assistance middle school. For young people aged 10 to 15 years old and their families.

Our mission is to give young people the best opportunity to thrive in middle school and create positive pathways for their future.

At The Yunity School, we recognise the middle school years as one of the most important steps in a young person's journey to meaningful, lifelong engagement with learning.

It's a time when young people begin to experience agency, ownership and independence in their education, develop a sense of self and connection to the world, and begin to explore exciting possibilities for the future.

Yet many young people disengage from their education and learning journey during this step—especially those with complex learning and social support needs or who experience educational disadvantage.

At The Yunity School, we aim to support all young people and their families to engage or reengage with school, successfully navigate the middle years, and face their future with confidence, resilience and pride.

Belong

Creating a proud sense of connection and community at school—and a collaborative network of support outside the school gates.

Learn

Delivering engaging, innovative and flexible education programs that are responsive to individual learning needs and education goals.

Thrive

A place where students and their families can find inspiration and support to rise to the challenge of life and realise their potential.

OUR VALUES

We focus on what is strong – Celebrating resilience in the face of challenges, developing our unique strengths and facing the future with confidence and positivity.

We are lifelong learners – Developing curiosity, creativity, wonder and a lifelong love of learning as fundamental tools to living a rich and thriving life.

We learn and grow together – Embracing parents and families as partners in learning who can grow and develop together with young people and who have the unique role of passing on values and culture.

We celebrate diversity and difference – Recognising the unique contribution of every individual and celebrating diversity and difference as part of the fabric that strengthens our communities.

We care about ourselves and others – Knowing that academic success starts outside the classroom, and we develop our emotional and physical well-being—and support others to do the same.

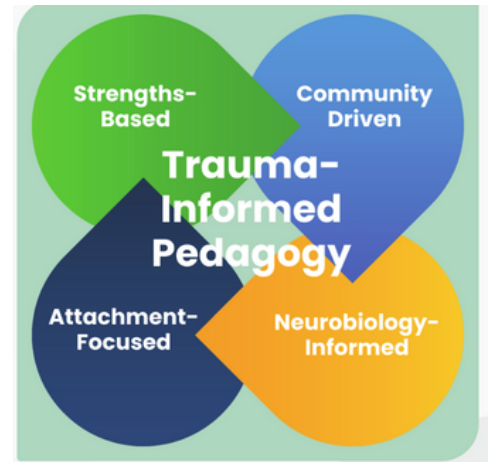
We are a community – Coming together as young people, families, staff and community members to co-create the best programs, networks, pathways and opportunities as a community.

OUR LEARNING MODEL

Creating Trauma-Informed Strengths Based Classrooms

At The Yunity School, we aim to be a centre of excellence in special assistance education by delivering programs that support children to build their self-regulatory capacities, to develop a sense of relatedness and belonging at school, and to integrate wellbeing principles that nurture growth and identify strengths.

Drawing on evidence-based models, including Berry Street Education*, our classrooms nurture our students' well-being and enhance their willingness to engage in learning, harnessing their strengths for effective learning and future pathways.



ENROLMENT PROFILE

After 12 months of operation, The Yunity School's student profile is becoming clearer. Our first cohort of 45 students in Years 7–9 has grown into a thriving school community with strong demand from referring schools and parents. 2026 will see enrolments grow to 90 students, with two classes each in Years 7, 8 & 9. Our expansion will extend to Years 5 and 6 by 2027.

Key takeaways from our enrolment profile:

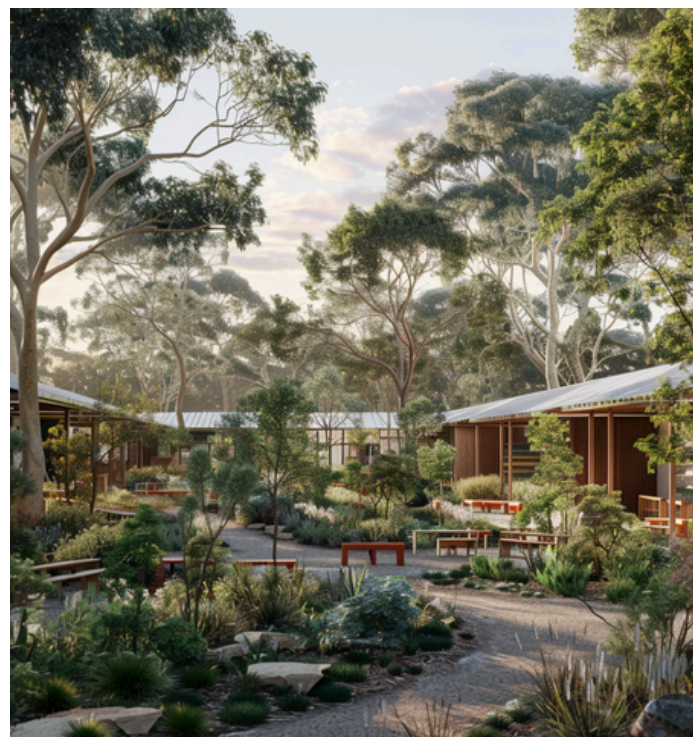
- Students are engaging or re-engaging after disrupted schooling experiences.
- The majority present with complex social, emotional, and behavioural needs, requiring small class sizes, learning adjustments, and high staff-to-student ratios.
- Students thrive in environments that are calm, structured, and tailored, where they feel safe, supported, and able to learn.
- Strong referral pathways now exist with local schools, community services, and youth support agencies.
- Demand continues to exceed current capacity, confirming the critical need for quality special assistance education in the Moreton Bay region.

BURPENGARY CAMPUS

The Yunity School's first campus at 45 Pitt Road, Burpengary, has quickly become a welcoming and inspiring environment that supports learning, wellbeing, and community connection.

Looking ahead, 2026 will see the opening of four new classrooms, multiple outdoor learning spaces, and culturally responsive environments that reflect and respect the diverse identities of our students.

This next stage of development is not just about growth in numbers — it reflects our commitment to creating educational spaces that are high-quality by design, delivering facilities that enhance learning and wellbeing, providing inspiring, safe, and accessible spaces.



POSITION DESCRIPTION

Teacher Aides

OUR INVITATION

The Younity School has quickly established itself as Moreton Bay's only independent special assistance middle school, offering inclusive, inspiring and safe classrooms where students thrive. Since opening in July 2024, demand has grown rapidly and in 2026 we will expand with new classrooms, outdoor learning zones and culturally responsive, technology-rich spaces.

We are now seeking passionate Teacher Aides to join our team in January 2026. This is a unique opportunity to support young people to re-engage in education, enjoy small class sizes with high staff-to-student ratios, and be part of a pioneering school community.

If you feel ready to embrace the challenges and rewards of this exciting role, we warmly invite you to apply.

ABOUT THE ROLE

The Teacher Aide role is to support student learning by working collaboratively with class teachers to develop and implement strategies that enable students to access the curriculum across all Key Learning Areas.

You will:

- Work alongside class teachers to provide environments that nurture the physical, intellectual, social and emotional development of students.
- Act as an extra set of "helping hands" in the classroom and across the school.
- Support students one-on-one, in small groups, and within class settings, ensuring learning adjustments and support strategies are implemented.
- Assist in developing differentiated resources, implementing disability adjustments, and supporting individual education plans (IEPs).
- Contribute to the calm, structured and trauma-informed environment that is central to The Younity School's learning model.

THIS ROLE WILL SUIT SOMEONE WHO:

- Is adaptable, resilient and creative in their approach
- Is patient, energetic and brings a good sense of humour to their work
- Builds trust and rapport easily with staff, students and families
- Has a commitment to personal growth and ongoing professional learning
- Enjoys working collaboratively as part of a multidisciplinary team to support student wellbeing and learning

We believe workplace diversity sparks innovation and creativity. The Younity School is a safe, accessible and inclusive workplace for people of all backgrounds.

We encourage people from Aboriginal and/or Torres Strait Islander backgrounds with relevant experience to apply.

KEY DUTIES & RESPONSIBILITIES

- Carry out tasks as determined by the Principal and class teachers to assist students and staff.
- Assist in the integration and support of students with learning and behavioural difficulties.
- Provide one-on-one and small group assistance as directed.
- Support students in developing a growth mindset and commitment to improvement.
- Guide students in meeting classroom expectations for learning and behaviour.
- Alert appropriate staff to any issues related to student wellbeing or safety.
- Liaise with parents when required under the direction of teachers and the Principal.
- Support the development of differentiated learning resources and adjusted assessments.
- Assist with the provision of disability adjustments for students in Years 7–9.

EXPERIENCE & QUALIFICATIONS

ESSENTIAL

- Previous teaching or teaching support experience with children.
- Fluent levels of spoken and written English.
- A current Working with Children Check clearance (blue card) issued by Blue Card Services.

DESIRABLE

- Experience working collaboratively with teaching staff in a classroom environment.
- Certificate III or IV in Education Support or related (or commitment to attain)
- Demonstrated equivalent competencies at this grade.

CORE NON-TECHNICAL SKILLS + ATTRIBUTES

- Emotional Intelligence
- Problem-solving, critical thinking and decision-making
- High level of integrity and ethical conduct
- Flexibility and adaptability
- Commitment to The Younity School's core values and organisational culture.



The Younity School is a Child Safe environment in which there is zero tolerance for child abuse. It is a condition of employment that all employees comply with all relevant policies and procedures, including Child Safe policies.

TERMS & CONDITIONS

Program Team:	The Younity School
Reporting to:	Principal, The Younity School
Employment Type:	Full-time or Part-time (21-38 hours)
Reports:	None
Working from:	The Younity School, Burpengary Campus
Probation Period:	6 months
Key Internal Relationships:	Teaching Team, Student Support Team, Younity Program Heads, Youth Services Team, Children & Families Team
Key External Relationships:	Parents, Carers, Families, Community Members, Service Partners, Pathways Partners, Referral Partners, Allied Health Services

WHAT THE YOUNITY SCHOOL CAN OFFER YOU

- Pay rates from \$32–\$45 per hour plus NFP salary packaging
- Term-time work with school holiday breaks
- Small class sizes with high staff-to-student ratios
- Ongoing coaching and mentoring in behaviour support and learning design
- Professional development opportunities in trauma-informed education
- A supportive, friendly and collaborative team
- Leadership opportunities as our school grows
- Wellbeing and work-life balance, including team-building and staff wellbeing days

APPLICATION PROCESS

STEP ONE

Please submit your resume and a cover letter (max 2 pages) addressing the key skills and abilities via our online portal.

www.younityschools.qld.edu.au/about/work-with-us

Applications will be assessed on an ongoing basis, and early applications are encouraged.

STEP TWO

Panel Interviews will be held for short-listed candidates

STEP THREE

Successful candidates will be expected to start in January 2026, with some flexibility negotiable.

For a confidential discussion, please contact **David McKay, Principal** on **0468382615** or **david.mckay@younityschools.qld.edu.au**



Younity acknowledges the Traditional Owners of Gubbi Gubbi Country and recognises their rich history and continuing connection to learning, community, land, waters and culture. And we pay our respects to all Aboriginal and Torres Strait Islander Peoples and Elders past, present and emerging.

Younity is committed to embracing diversity and eliminating all forms of discrimination in providing our services and support. Younity welcomes all people irrespective of ethnicity, lifestyle choice, faith, sexual orientation and gender identity.