

ND50

HYDRO-STATIC PIPEBURSTER



50 tons of pulling power

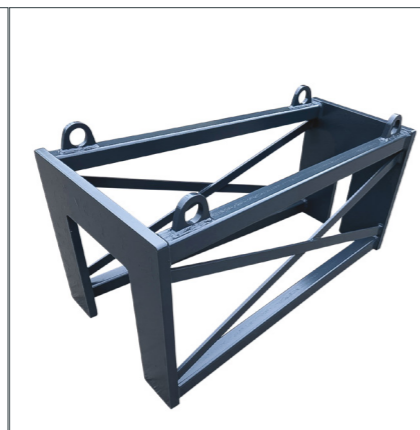
2 inch. → 10 inch. operational range

Pipe materials: Can operate in all pipe materials



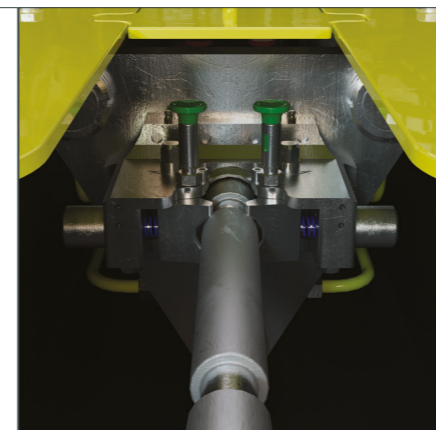
Cutting head

Eccentric one-blade cutting head, designed for steel, cast and ductile.



Extension frame

ND50 heavy duty extension frame.



ND50 jaw-design

Double jaw system creating constant tension during pull-back.



Solid steel rods

The ND50 composite steel rod system, is designed for high grade safety margin

Specifications	Pulling unit	Power pack	Steel rods
Pulling force	50 tons		
Measurements	5.5 x 1.5 x 1.7 ft.	4.0 x 3.5 x 4.0 ft.	1.44 x 40 inch.
Weight	1,300 lbs.	1,800 lbs.	26 lbs.
Engine		Kubota 3-cyl. diesel 25 bhp. / 18.60 kW. Fuel cap. 9.25 gal. Fuel consumption: 1.3 gal. / hr.	
Hydraulic system	3 cylinders	Max op. pressure: 250 bar / 3,625 psi. Engine preset: 2,600 rpm. / min. 0.55 in ³ gear pump: 6.18 gal. / min. 1.28 in ³ gear pump: 14.4 gal. / min. Variable pump flow: <120 bar / 1,740 psi. 20.6 gal. / min. >120 bar / 1,740 psi. 6.18 gal. / min.	
Operational speed	Up to 3.3 ft. / min. Cylinder stroke: 1.6 ft.		
Operational range, Existing pipe diameter	3 inch. → 10 inch.		

Designer's note:

"Versatile midrange machine.

The pulling force of this model makes it the strongest in its class. Anything from asbestos to ductile is managed by the ND50."



Hydraulic Power Pack

ND50 power pack, 25 bhp. diesel engine. 3,625 psi op. pressure.