

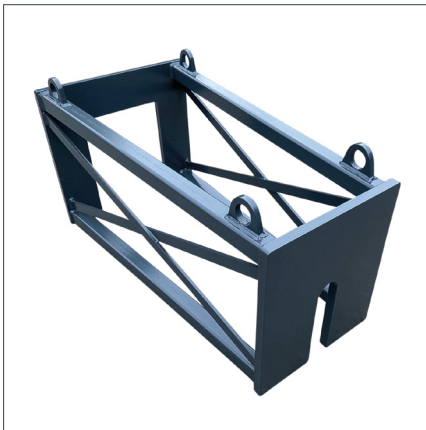
# ND100

## HYDRO-STATIC PIPEBURSTER

**100 tons of pulling power**

**3 inch. → 16 inch. operational range**

**Pipe materials: Can operate in all pipe materials**



**Extension frame**

Heavy duty extension frame.



**Steel rod container**

Steel rod container holding 39 pc's.



**Cutting head**

Eccentric one-blade cutting head, designed for steel, cast and ductile.

| Specifications                                       | Pulling unit         | Power pack  | Steel rods        |
|--|----------------------|---|-------------------|
| <b>Pulling force</b>                                 | 100 tons             |   |                   |
| <b>Measurements</b>                                  | 6.0 x 2.1 x 2.4 ft.  | 4.0 x 3.6 x 4.0 ft.   | 2.36 x 30.0 inch. |
| <b>Weight</b>  | 3,080 lbs.           | 1,800 lbs.  | 33 lbs.           |
| <b>Engine</b>  |                      | Kubota 3-cyl. diesel<br>25 bhp. / 18.60 kW.<br>Fuel cap. 9.25 gal.<br>Fuel consumption: 1.3 gal. / hr.  |                   |
| <b>Hydraulic system</b>                              | 3 cylinders          | Max op. pressure: 250 bar / 3,625 psi.<br>Engine preset: 2,600 rpm. / min.<br>0.55 in <sup>3</sup> gear pump: 6.18 gal. / min.<br>1.28 in <sup>3</sup> gear pump: 14.4 gal. / min.<br><br>Variable pump flow:<br><120 bar / 1,740 psi. 20.6 gal. / min.<br>>120 bar / 1,740 psi. 6.18 gal. / min. |                   |
| <b>Operational speed</b>                             | Up to 6.5 ft. / min. |   |                   |
| <b>Operational range,<br/>Existing pipe diameter</b> | 3 inch. → 16 inch.   |   |                   |



**Solid steel rods**

High-grade composite material, designed for high safety margin.

**Designer's note:**

*"The successful combination of size and power are brought together in the ND100 pipeburster.*

*Twenty-five years of research and development have been put into this design.*

*High speed, great power and a low operational cost has made this our best selling model."*



**Hydraulic Power Pack**

ND100 power pack, 25 bhp. diesel engine. 3,625 psi op. pressure.