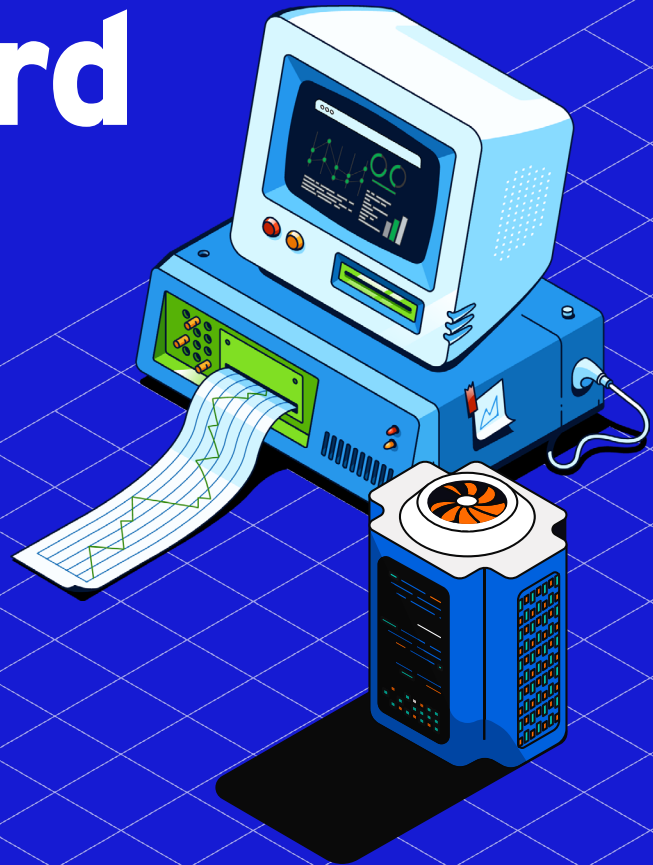


## USE CASE

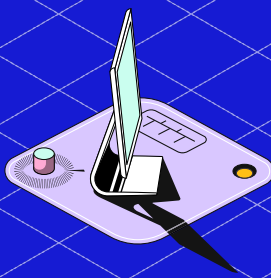
# Tableau Dashboard



○○○

## Use Case

The customer is looking to enhance the flexibility of data visualization within IriusRisk, aiming to create more customized and dynamic reporting dashboards. While IriusRisk provides comprehensive data through its API, some teams may benefit from additional support to streamline data integration and visualization processes.



○○○

## Requirements

The customer uses Tableau for internal data visualization and seeks the ability to customize and expand dashboards without extensive external involvement.

○○○

## Solution

A Python script that aggregates data from multiple IriusRisk endpoints and prepares it for seamless ingestion into Tableau. Custom dashboard configuration in Tableau that builds on the IriusRisk standard reports, with added functionality to aggregate data by Business Unit, Custom Fields, and other key metrics.

