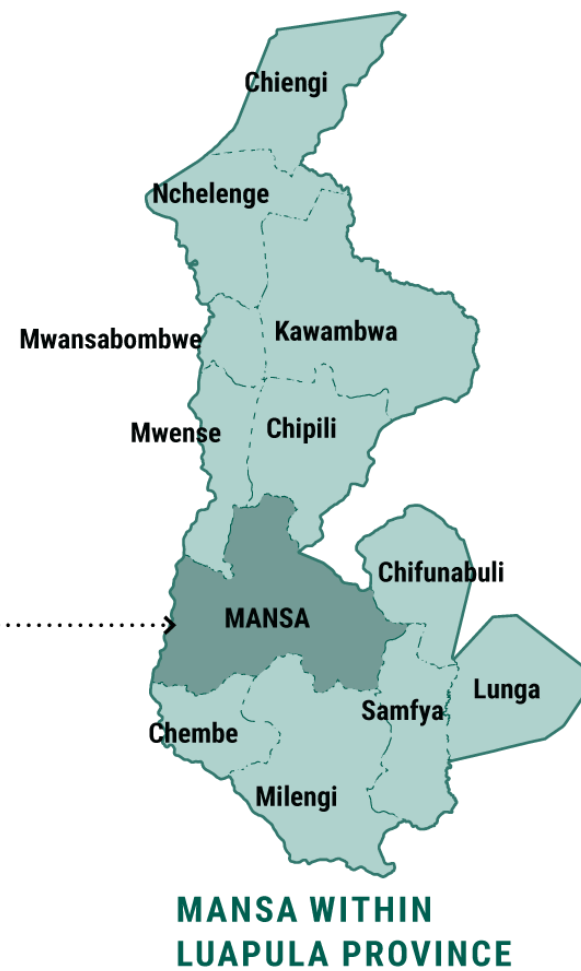


City name: **Mansa, Zambia**
Year: **2024 AMALI City Profile**

This document contains the data and data sources as presented on the relevant AMALI city profile.

SECTION ONE

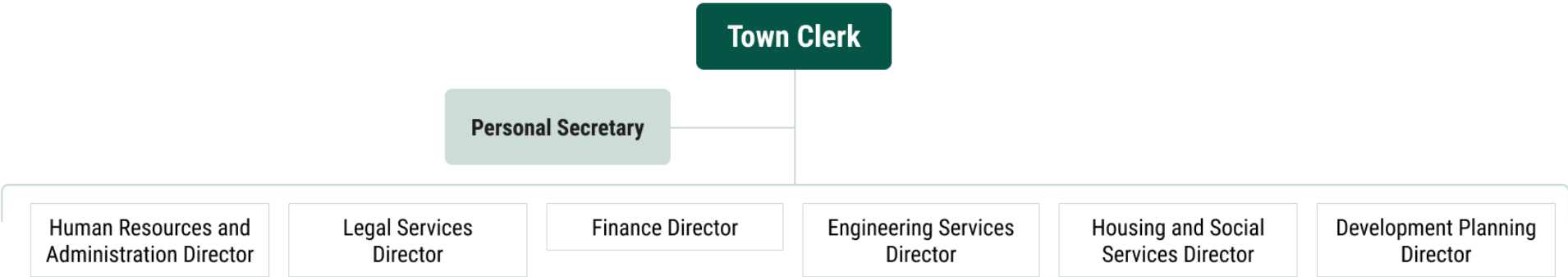
	Data	Source
Official name	Mansa Municipal Council	<i>No source needed</i>
Overview	Mansa is the provincial administrative capital of Luapula province of Zambia. The municipality consists of urban, peri-urban and rural areas and shares boundaries with Mwense, Samfya, Milenge Luwingu districts and international borders with the Democratic Republic of Congo.	Mansa District State of Environment Outlook Report 2013 https://www.zema.org.zm/wp-content/uploads/2023/03/Mansa-District-State-of-Environment-Outlook-report.pdf
Country	Zambia	<i>No source needed</i>



SECTION TWO: GOVERNANCE

	Data	Source
Mayor (including official title)	<ul style="list-style-type: none"> Njikho Musuku, Mayor of Mansa Municipal Council 	Mansa District Integrated Development Plan 2023 – 2033
Term of office (number of years)	<ul style="list-style-type: none"> 5 years 	
Current term of office	<ul style="list-style-type: none"> 2021-2026 	
When first elected / appointed	<ul style="list-style-type: none"> 2021 	
Legacy Goal	<i>To provide ward-based solid waste management and cleaning services for Mansa's CBD, major markets and 50,000 residential households to achieve environmentally sound standards, cleanliness and disease control within 24 months</i>	2024 AMALI City Leadership Forum and AMALI Reunion event
How elected or appointed	<ul style="list-style-type: none"> Elected by the public in general election 	Mansa District Integrated Development Plan 2023 – 2033
Main departments / directorates (functions of departments)	Departments <ul style="list-style-type: none"> Town Clerk Human Resources and Administration Finance Development Planning Housing and Social Services Legal Services Engineering Services 	Mansa Municipal Council
Political structure	<p>Mansa district consists of two institutional pillars: General District Administration (Mansa District Administration) headed by the District Commissioner and Local Government Administration (Mansa Municipal Council) headed by the Mayor.</p> <p>Mansa Municipality is made up of two parliamentary constituencies and twenty Council wards. It has an elected mayor, twenty elected Ward Councillors and three chiefs selected by all chiefs in the district.</p>	Mansa District Integrated Development Plan 2023 – 2033

Administrative Organogram



Demographics

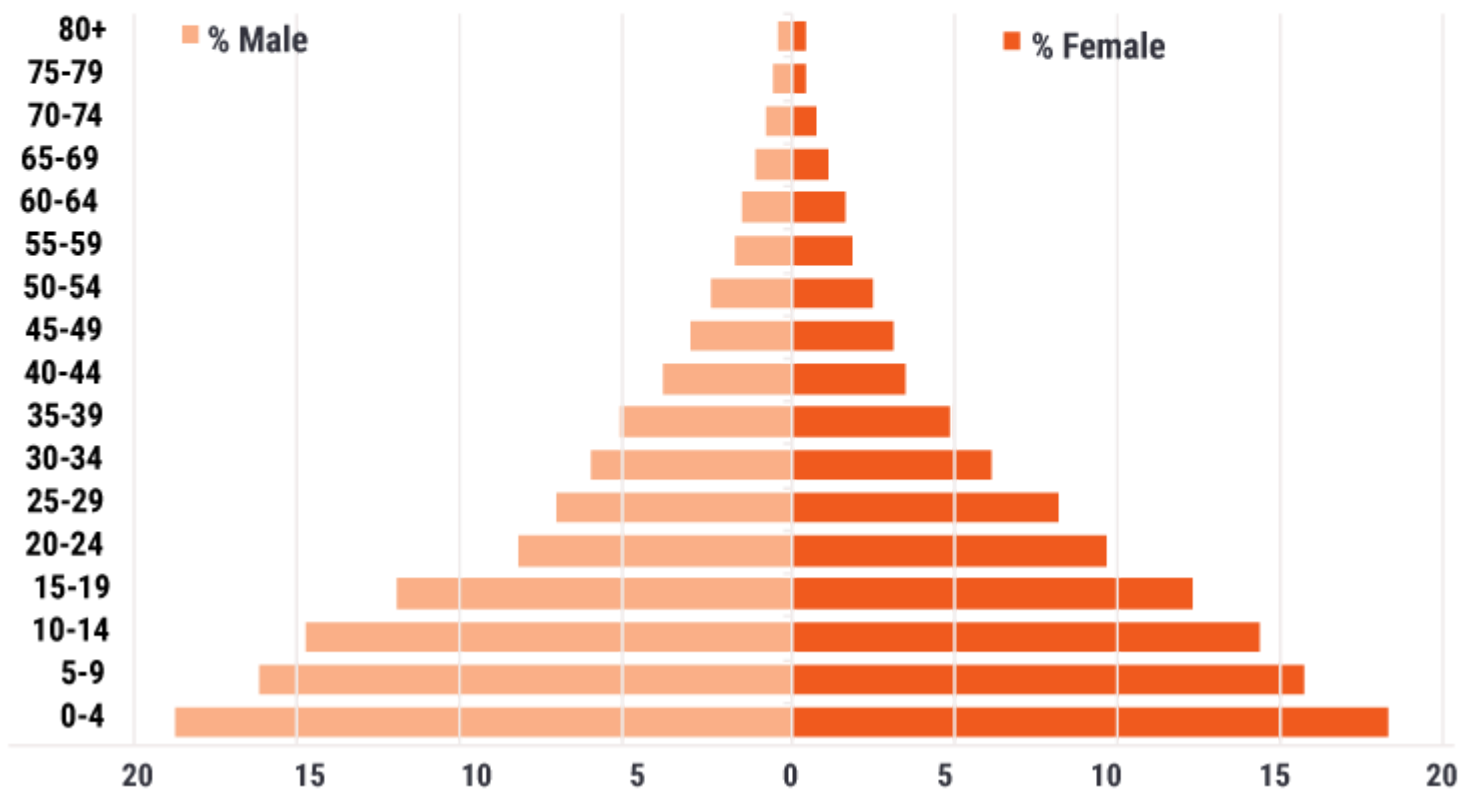
Population trends, projections & growth

	Data (year)	Sources
Population figures (i.e. area governed)	<ul style="list-style-type: none">327,063 (2022)204,998 (2010)	Zambia Statistics Agency. 2022. 2022 Census of Population and Housing. Available: https://www.zamstats.gov.zm/wp-content/uploads/2023/05/2022-Census-of-Population-and-Housing-Preliminary.pdf
Population projection for next available year	Not available	
Size of city	7,775.7 km ²	Zambia Statistics Agency. 2022. 2022 Census of Population and Housing. Available: https://www.zamstats.gov.zm/wp-content/uploads/2023/05/2022-Census-of-Population-and-Housing-Preliminary.pdf
Population density	42.1 people/km ²	Zambia Statistics Agency. 2022. 2022 Census of Population and Housing. Available: https://www.zamstats.gov.zm/wp-content/uploads/2023/05/2022-Census-of-Population-and-Housing-Preliminary.pdf
Total households	43,631 households (2010)	Zambia Statistics Agency. 2012. 2010 Census of Population and Housing.

Age profile

Age Category	Male (2010)	Female (2010)
0-4	20,290	20,265
5-9	17,503	17,407
10-14	15,999	15,890
15-19	12,991	13,596
20-24	8,976	10,682
25-29	7,713	9,057
30-34	6,592	6,788
35-39	5,612	5,384
40-44	4,235	3,884
45-49	3,339	3,430
50-54	2,647	2,759
55-59	1,829	2,032
60-64	1,605	1,828
65-69	1,183	1,265
70-74	811	849
75-79	589	479
80+	422	461

Age in
years



Urban development, infrastructure and spatial info

Basic services

	Data	Sources
Water (% of population serviced)	<ul style="list-style-type: none"> 22.4% of the population are using safely managed water services (2021) [1] Coverage of safely managed water services: <ul style="list-style-type: none"> 6.4% rural coverage 35.1% urban coverage Most households rely on private boreholes and shallow wells* [2] <p><i>* these water sources are more reliable water sources but are mostly unprotected</i></p>	<p>[1] Mansa IDP (page 80).</p> <p>[2] Mansa District State of Environment Outlook Report 2013 https://www.zema.org.zm/wp-content/uploads/2023/03/Mansa-District-State-of-Environment-Outlook-report.pdf</p>
Electricity (% of population serviced)	<p>Main sources of energy in the district (2011):</p> <ul style="list-style-type: none"> Hydropower (10% of households are connected to the national grid) Wood fuel Charcoal Petroleum 	<p>Mansa District State of Environment Outlook Report 2013 https://www.zema.org.zm/wp-content/uploads/2023/03/Mansa-District-State-of-Environment-Outlook-report.pdf Also supported in Mansa's IDP.</p>
Sanitation (% of population serviced)	<ul style="list-style-type: none"> 2.2% of the population are using safely managed sanitation services (2021) [1] <p>The district has three sanitation methods for the sewage disposal systems (% of population serviced; 2010) [2]:</p> <ul style="list-style-type: none"> Flush toilets – 2% Pit latrines – 72% Bushes/other – 20% 	<p>[1] Mansa IDP (page 80)</p> <p>[2] Mansa District State of Environment Outlook Report 2013 https://www.zema.org.zm/wp-content/uploads/2023/03/Mansa-District-State-of-Environment-Outlook-report.pdf</p>
Waste management (e.g. % serviced; number of dumps and capacity)	<ul style="list-style-type: none"> Approximately 40% of waste generated in the district is collected and disposed of 	<p>Ministry of Water Development, Sanitation and Environmental Protection - Zambia Joint Water, Sanitation and Environment Sector Review Report 2018 https://www.mwds.gov.zm/wp-content/uploads/2023/02/Final-Joint-Water-Sanitation-Environment-Sector-Review-Report-2018_Signed.pdf</p>

Transport

	Data	Sources
Modes of transport (e.g. public transport)	<ul style="list-style-type: none">• Air• Bus (between major cities)• Car• Bicycle• Walking	"Air and roads" confirmed by data contact. All others from Google Street View.

Human development

	Data	Sources
How many primary schools in the city	<ul style="list-style-type: none">• The District has a total of 121 schools	Mansa District Integrated Development Plan 2023-2033
% of population educated	<ul style="list-style-type: none">• 95% of all enrolled learners complete primary education• 91% of enrolled learners complete secondary education	Mansa District Integrated Development Plan 2023-2033
Human Development Index score <ul style="list-style-type: none">• National• City (where available)	<ul style="list-style-type: none">• National: 0.565 (2021)	UNDP Human Development Index: https://hdr.undp.org/data-center/specific-country-data#/countries/ZMB

Economics

	Data	Source
Annual Budget (in both local currency and \$US)	<ul style="list-style-type: none">• US\$ 4,360,000.00• ZMW 109,000,000 (2024)	Mansa Municipal Council 2024
Revenue Collection	<ul style="list-style-type: none">• Levies• Local taxes	Constitution of Zambia (Amendment Act of No.2 of 2016)
Unemployment Statistics if available	<i>Data unavailable</i>	

Size of informal economy	<ul style="list-style-type: none"> • National: 84.8% of population is employed in the informal sector (2020) 	ILO database: https://ilostat ilo.org/topics/informality/
Main sectors contributing to economic activity	<ul style="list-style-type: none"> • Agriculture • Manufacturing • Tourism • Fishing • Informal economy • Hospitality industry • Trading • Mining (large scale, small scale, and artisanal) 	Mansa District State of Environment Outlook Report 2013 https://www.zema.org.zm/wp-content/uploads/2023/03/Mansa-District-State-of-Environment-Outlook-report.pdf

Key sources

- Mansa District State of Environment Outlook Report 2013. Available: <https://www.zema.org.zm/wp-content/uploads/2023/03/Mansa-District-State-of-Environment-Outlook-report.pdf>
- Mansa District Integrated Development Plan 2023-2033
- Ministry of Water Development, Sanitation and Environmental Protection - Zambia Joint Water, Sanitation and Environment Sector Review Report 2018
https://www.mwds.gov.zm/wp-content/uploads/2023/02/Final-Joint-Water-Sanitation-Environment-Sector-Review-Report-2018_Signed.pdf
- UNDP Human Development Index: <https://hdr.undp.org/data-center/specific-country-data#/countries/ZMB>

Disclaimer:

We have made extensive efforts to maintain a high standard of data accuracy by utilising information sourced directly from city administrations, official national statistics offices, relevant government ministries, or reputable international agencies, or peer-reviewed journal articles when no other data sources are available. However, certain data, including indicator definitions, denominators, and numerators, have not been independently verified. All AMALI city administrations review and revise their respective AMALI city profiles before uploading them to AMALI GovHub. We have obtained consent from the city administrations to upload the city profile.