

City name: Ndola, Zambia
Year: 2024 AMALI City Profile



This document contains the data and data sources as presented on the relevant AMALI city profile.

SECTION ONE

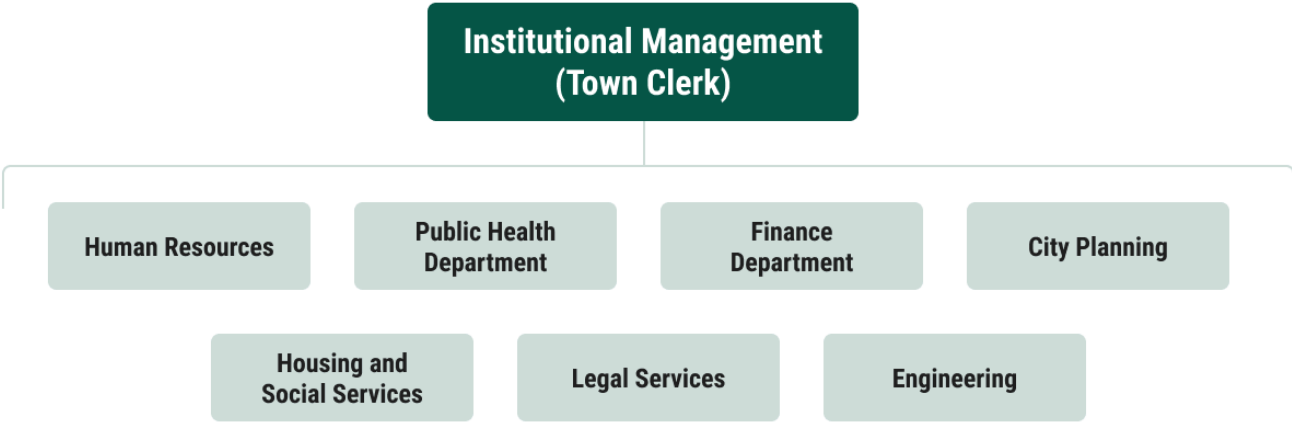
	Data	Source
Official name	Ndola City Council	<i>No source needed</i>
Overview	Ndola district is the Provincial Headquarters of the Copperbelt Province, which is one of the 10 provinces found in Zambia. Ndola borders three (3) districts namely, Masaiti, Luanshya and Kitwe. To the north, Ndola shares an international boundary with the Democratic Republic of Congo (DRC).	
Country	Zambia	<i>No source needed</i>

SECTION TWO: GOVERNANCE

	Data	Source
Title and name of City Leader	Jones Kalyati, Mayor of Ndola	
Length of a full term of office (number of years)	5 years	
Dates of current term of office	2021-2026	
Date when first elected / appointed	2021	

Legacy Goal	<i>To enhance transportation by establishing an Inter-City Bus Terminus and improving transporters and commuters experience, by 2026.</i>	2024 AMALI City Leadership Forum
How is the Mayor/City leader elected or appointed?	Elected by the public in general election	
Main departments / directorates	<ul style="list-style-type: none"> - Institutional Management (Office of the Town Clerk) - Human Resources - Public Health - City Planning - Housing & Social Services - Legal Services - Engineering - Finance 	Official website of the city https://www.ndolacouncil.gov.zm/?page_id=770

Organogram of administrative departments



Source: Official website of the city. Available: https://www.ndolacouncil.gov.zm/?page_id=118

SECTION THREE: DEMOGRAPHICS AND DEVELOPMENT PROFILE

Demographics

Population trends, projections & growth

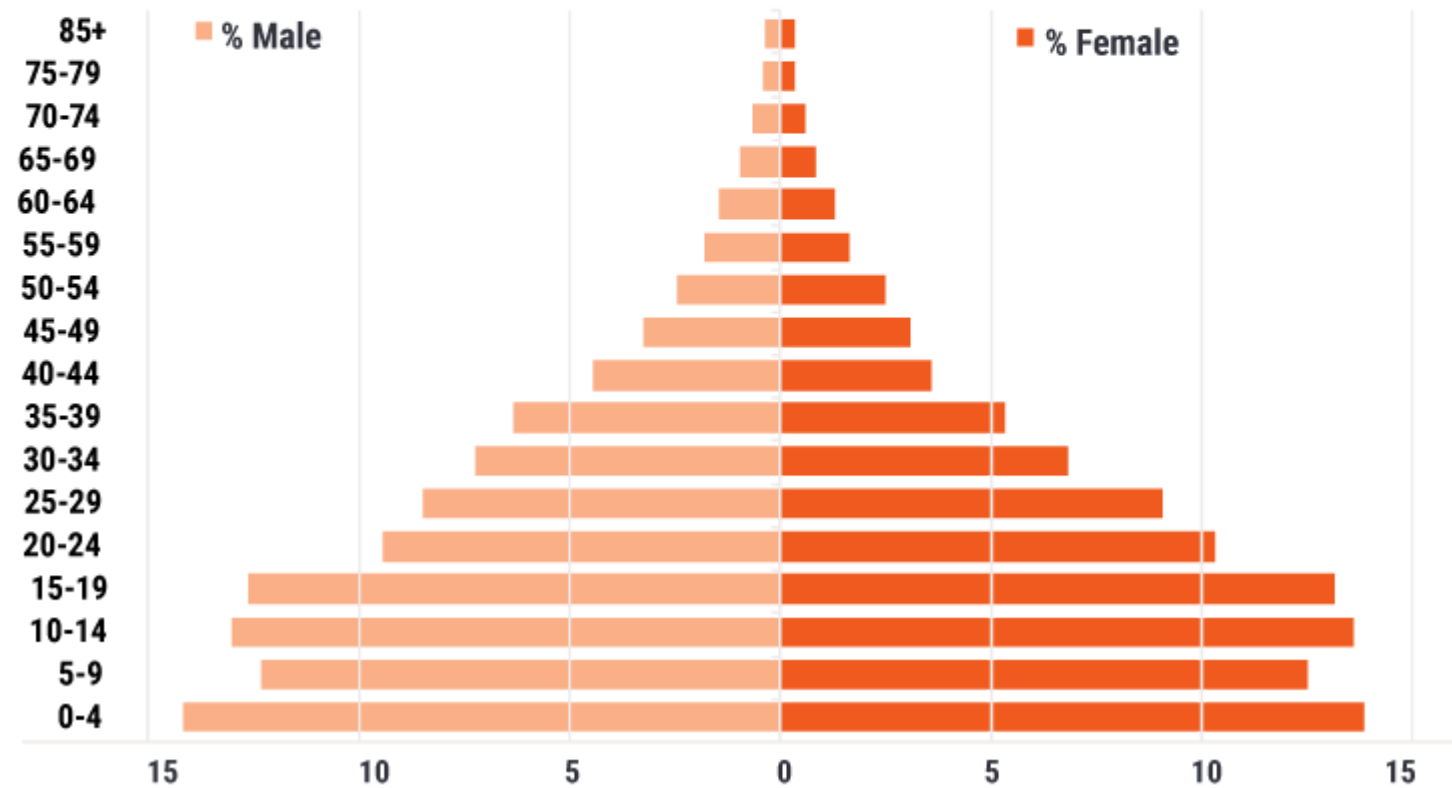
	Data (year)	Source
Population figures (i.e. area governed)	Latest population (2022): 624,574 Previous population (2010): 451,246 inhabitants	Zambia Statistics Agency. 2022. 2022 Census of Population and Housing. Available: https://www.zamstats.gov.zm/wp-content/uploads/2023/05/2022-Census-of-Population-and-Housing-Preliminary.pdf
Population projection for next available year	760,000 inhabitants (2031)	Ndola City. Integrated Development Plan 2022 to 2032. Provided by city data contact.
Size of city	1,108 km ²	Ndola City. Integrated Development Plan 2022 to 2032. Provided by city data contact.
Population density	563.7 persons/km ² (2022)	Calculated

Ndola Age profile (2010)

2010	Male	Female
0-4	31,855	31,944
5-9	27,662	28,882
10-14	29,273	31,401
15-19	28,368	30,279
20-24	21,175	23,797
25-29	19,092	20,960
30-34	16,288	15,770
35-39	14,217	12,312
40-44	9,908	8,342
45-49	7,316	7,097
50-54	5,455	5,716
55-59	4,043	3,824
60-64	3,210	2,960
65-69	2,140	1,968
70-74	1,416	1,381
75-79	843	798
80+	759	795

Source: Zambia 2010 Census

Age in
years



Urban development, infrastructure and spatial info

Basic services

	Data	Sources
Water (% of population serviced)	Over 85% have access to drinking water	Ndola City data contact
Sanitation (% of population serviced)	12 residential areas have access to sanitation	Ndola City data contact
Electricity (% of population serviced)	72,047 households have access to electricity	Ndola City data contact
Waste management (e.g. % serviced, number of dumps and capacity)	Unchecked dumping of solid waste by sawmills, processing and manufacturing industries	Ndola City. Integrated Development Plan 2022 to 2032. Provided by city data contact.

Transport

	Data	Sources
Modes of transport (e.g. public transport)	<ul style="list-style-type: none">- Air transport: 2 airports- Buses- Minibus taxis- Private cars- Bicycles- Walking- Rail Transport	Official website of the Copperbelt Province https://www.cbt.gov.zm/?page_id=1480 Ndola City data contact

Human development

	Data	Sources
Primary schools	38 primary schools	Ndola City data contact
% of population educated	Net Enrolment Rate: More than 80%	Zambia 2008 District Profile for Ndola Urban https://www.epdc.org/sites/default/files/documents/Zambia_subnatz_NdolaUrban.pdf
Human Development Index score	National: 0.585 (2019)	UNDP Human Development Index: https://hdr.undp.org/data-center/human-development-index#/indicies/HDI

Economics

	Data	Source
Annual Budget (in both local currency and \$US)	Approved total budget (2024) USD 14,909,205.00 K298,363,129.00	0.04997 USD for average annual exchange rate over 2023 (https://www.exchange-rates.org/exchange-rate-history/zmw-usd-2023). <i>*Usual website we use doesn't have data available</i>
Revenue Collection	- Local taxes - Fees and charges - Other receipts - National support	UCLG country profile- Republic of Zambia https://www.gold.uclg.org/sites/default/files/Zambia.pdf
Unemployment Statistics if available	Copperbelt Province Youth Unemployment rate: 19.1% (2021)	Republic of Zambia. 2021. 2021 Labour Force Survey Report. Ministry of Labour and Social Security. Available: https://www.zamstats.gov.zm/wp-content/uploads/2023/05/2021-Labour-Force-Survey-NHPP.pdf
Size of informal economy - National - City (where available)	City level: 64.2%	Official website of the Copperbelt Province https://www.cbt.gov.zm/?page_id=1480
Main sectors contributing to economic activity	Major economic activities <ul style="list-style-type: none"> ● Cement ● Manufacturing ● Construction ● Transportation ● Wholesale and trade 	Ndola City. Integrated Development Plan 2022 to 2032. Provided by city data contact.

	<ul style="list-style-type: none"> • Forestry <p>Minor economic activities:</p> <ul style="list-style-type: none"> • Quarrying • Hospitality industry • Financial services 	
--	----------------------------------------------------------------------------------------------------------------------------------------------------------------------------------------------------------------------------	--

Key sources:

- Ndola City. Integrated Development Plan 2022 to 2032. Provided by city data contact.
- Zambia Statistics Agency. 2022. 2022 Census of Population and Housing. Available: <https://www.zamstats.gov.zm/wp-content/uploads/2023/05/2022-Census-of-Population-and-Housing-Preliminary.pdf>
- Republic of Zambia. 2021. 2021 Labour Force Survey Report. Ministry of Labour and Social Security. Available: <https://www.zamstats.gov.zm/wp-content/uploads/2023/05/2021-Labour-Force-Survey-NHPP.pdf>
- Official website of the Copperbelt Province https://www.cbt.gov.zm/?page_id=1480

Disclaimer:

We have made extensive efforts to maintain a high standard of data accuracy by utilising information sourced directly from city administrations, official national statistics offices, relevant government ministries, or reputable international agencies, or peer-reviewed journal articles when no other data sources are available. However, certain data, including indicator definitions, denominators, and numerators, have not been independently verified. All AMALI city administrations review and revise their respective AMALI city profiles before uploading them to AMALI GovHub. We have obtained consent from the city administrations to upload the city profile.