

95 PLEASANT HILL RD

ADDRESS

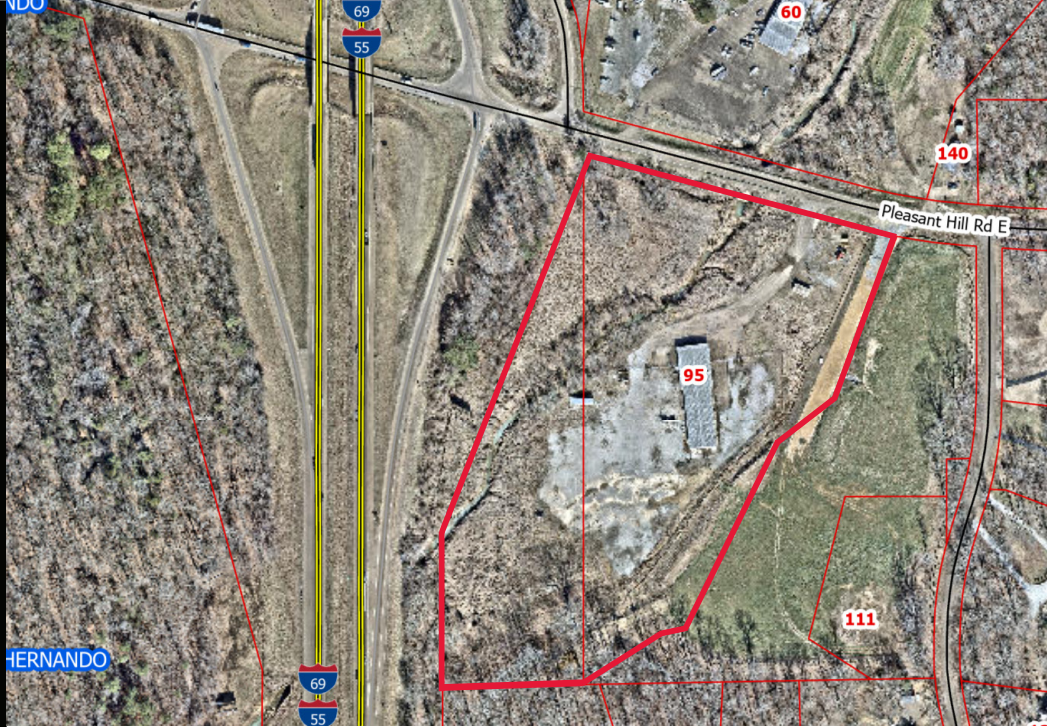
95 Pleasant Hill Rd
Nesbit, MS 38651

SIZE

12.4 acres +/-

PRICE

\$9,500/month



PROPERTY HIGHLIGHTS

- 12.4 acres +/- on two parcels of land with commercial building
- Total building size is 10,000 sf +/-
- Property is zoned C-2
- Former car dealership with 7,500 sf shop and 2,500 sf office space
- Shop has 10 roll up doors with a large paved/graveled yard area

LOCATION HIGHLIGHTS

- Excellent visibility with Interstate 55 frontage
- Property is located along Pleasant Hill Rd and Interstate 55
- Convenient access to Memphis and all parts of DeSoto County via I-55

662.349.7775
commandrealtygroup.com

