





EXECUTIVE SUMMARY

FUSION Performance Group is delighted to share with you our travel partner, Transcend Cruises

FUSION is a company that truly understands the importance of creating an exceptional experience for our clients. We show people what VIP, white-glove service means and what it looks like to genuinely care. FUSION's team is made up of experienced professionals passionate about creating memorable events. They are dedicated to understanding your unique needs and exceeding your expectations.

FUSION's reputation has quickly spread and has become the go-to event management company for many high-profile clients. Being known for our ability to create truly unforgettable experiences that leave a lasting impression has set us apart from other event management companies. FUSION's commitment to excellence and attention to detail make us the premier choice to this day for creating extraordinary events.

We pride ourselves on the boutique nature of our company and we put our heart and soul into every project, offering flexibility not found in many firms.



“Transcend with FUSION”

/tran(t)'send/ (verb): Transcend means to rise above or go beyond the ordinary limits, surpassing the usual boundaries or expectations.

/fyu-zhen/ (noun): Fusion refers to the blending or combination of different elements, styles, or ideas to form something new and often more powerful.

Together, "transcend with fusion" implies the idea of surpassing normal limits or reaching a higher level of achievement or experience through the blending or merging of different elements, ideas, or forces. It could refer to combining strengths, talents, or aspects in a way that leads to something greater than the sum of the parts.



Why Choose **FUSION**

Experience: We have managed a wide range of events for various high-profile clients. Our expertise, combined with an understanding of your unique needs, will help create a memorable event that will resonate with all attendees.








Attention to Detail: We pride ourselves in our attention to detail, from customizing gifts to meticulous décor. Our thoughtfulness and consideration in planning ensure every aspect of your event aligns with your vision.

White-glove Service: We provide VIP service, ensuring a seamless experience for your guests from registration to event closure.

Exceeding Expectations: Time and time again, our clients are impressed by how we anticipate their needs and deliver beyond their expectations.

CORE VALUES

It is important to note that FUSION values all our partnerships like we value our friends and family. No one's expectations are higher than ours. We do whatever it takes, every time. Our way of thinking is shaped by our core values.

-  Inspire to inspire
-  Be open-minded and adventurous
-  Do more with less
-  Act with humility
-  Be passionate and determined
-  Create fun and a little weirdness
-  Deliver **WOW** and be **REMARKABLE!**

value

SUMMARY OF INCLUSIONS

Meet Transcend Cruises

- Transcend Cruises is the only B2B river line bringing to the market sustainable, luxury vessels as group and event venues.
- Transcend removes the barriers preventing or impeding group events on other vessels while raising the bar by creating a new standard by which all will be measured.
- Unlike most others, our vessels will accommodate an intimate 120 guests in 60 identical and oversized staterooms that can be converted to 30 two room suites.
- At 54 onboard staff members, Transcend features an industry leading crew to guest ratio of nearly 1:1 in the all-suite configuration.

The Vessel

Enters Service 2026
Registry, Switzerland
4 Decks

Staff : Guests

54 Staff Members
Staff to Guest Ratio
1:2.3 (standard)
1:1.5 (all suites)

Specifications

442 ft. long (135 meters)
37.5 ft. wide (11.5 meters)

Guest Capacity

120 Total Guests
60 Total Staterooms



Meet Transcend Cruises



Elevate Your Brand or Group



Client Specific Customization



Pricing Transparency



Exclusive Charters:
Our Complete Focus



Wellness Enablement &
Design



Flexible Itineraries
& Programming

Inclusions

The Deck Plan

Deck Plan Legend

- 1 Lounge
- 2 The Grill
- 3 Outdoor Cinema
- 4 Walking Path
- 5 Yoga Circle
- 6 Bicycles

- 7 The Lounge
- 8 The Forum
- 9 Aft Lounge
- 10 Spa Facilities
- 11 Reception

- 12 Private Salon 1
- 13 Private Salon 2
- 14 Library
- 15 Coffee Bar
- 16 The Forum
- 17 The Restaurant
- 18 Wine Vault
- 19 Chef's Demo Table
- 20 Fitness Studio

- 21 Laundry
- 22 The Studio
- 23 Client Office
- 24 Client Staterooms (3)

- 25 Elevator

Staterooms

Number: up to 60
Size: 210 SQ FT / 19.5 SQ M

Suites

Number: up to 30
Size: 420 SQ FT / 39 SQ M



Deck 4



Deck 3



Deck 3+



Deck 2



Deck 2+



Deck 1



2 Staterooms Back-to-Back

60 Identical Oversized
Staterooms at 210 Sq. Ft.



Ample Storage





Suite Configuration

Suite at 420 Sq. Ft.,
Living Room



Suite Entry Way
Glass Enclosed Closet





Wet Unit, Spa Shower

Inclusions

Suites

Every pair of staterooms can be converted into a 420 sq. ft. suite with spacious living room and bedroom including a European King bed or two twin beds. All suites feature the stateroom inclusions as well as the following.

- In-room mini bar set up upon embarkation (including beer, wine and spirits).
- Welcome bottle of Champagne.
- Upgraded bath amenities.
- 2-person spa shower.
- Technogym fitness kit.
- Daily canape service.
- Turndown digestif.
- Packing/unpacking service.
- Shoeshine service.
- Laundry pressing (upon embarkation).
- Enhanced in-suite dining.
- Special nightly turndow





Inclusions

Public Spaces

Transcend Cruises’ unique fleet is designed and purpose-built exclusively for exclusive charters. Our vessels boast many innovative firsts – including the architectural design of each vessel, featuring spaces that accommodate all guests for group programming like no other venue afloat (or on land, for that matter).

- Five distinct spaces to host all guests for programming, designed for group activities - Top Deck, Main Bar & Lounge, Restaurant, Forum, Studio.
- Dedicated spaces for small groups, events or relaxation including the Café, Library, Aft Lounge and two private meeting salons.
- Two-story event space, the Forum, with tiered seating, unobstructed views, AV setup and ability to customize for any activity.
- Unlimited custom setup of public spaces optimized for guest count and your programming needs.
- Dedicated wellness spaces including yoga room, spa, fitness center and outside wellness center.
- AV setup in the Lounges, Forum, Private Salons, Studio and Top Deck...plus mobile solutions in all public spaces.

VENUE	S. FT.	CAPACITY
Sundeck & Outdoor Cinema	5611	120+
Activity/Fitness Area (Aft)	4766	120+
Barbecue (Forward)	2714	20
The Lounge	2449	120
Main Lobby	671	20
Spa (Inc. Reception)	970	30
Aft Lounge	521	25
The Forum	755	120
Library & Coffee Bar	848	25
Dining Salon 1	160	12
Dining Salon 2	160	12
Main Restaurant	2213	120
Fitness Center	815	18
The Studio	1260	80
Charterer Storage	145	NA



The Top Deck is ideal for a multitude of events including a concert, fitness class, trade show, movie night, buffet dinner, reception or a lively silent dance party.

The Top Deck Bar & Grill features meal service for outdoor relaxation and lounge seating.

4766 Sq. Ft.
120+ Guests

The Main Lounge is a central hub of activity and the perfect gathering space for meetings, cocktails or a special dessert reception. This venue can be divided into 3 zones for breakout sessions.

2499 Sq. Ft.
120+ Guests





The Main Lounge comes alive after dinner where guests can dance the night away or enjoy special entertainment.

2499 Sq. Ft.
120+ Guests



The Forum, an amphitheater spanning 2 levels, is the ideal venue for any event requiring front lead content...including presentations, plenary sessions, a fun culinary demonstration or special entertainment. It features sloped seating and unobstructed views for all guests. It also features state-of-the-art a/v technical capabilities.

755 Sq. Ft.
120 Guests

Read a book in the Library and enjoy complimentary coffees, teas, lite bites and more in the barista-led Coffee Bar.

848 Sq. Ft.
25 Guests



There are 2 Private Salons for an intimate dining experience, board or other small meeting. Each features a large built-in monitor for presentations.

160 Sq. Ft.
12 Guests



The Main Restaurant serves daily breakfast, lunch and dinner. It seats all guests in a variety of configurations. The Restaurant can also accommodate meetings during other times of the day or a working luncheon presentation if preferred given unobstructed views from every table.

2213 Sq. Ft.
120 Guests



The Studio is your blank canvas of space located adjacent to three staff rooms and a fully functioning staff office including lockable storage making it an ideal "Command Center". It can also be configured for a trade show, meeting, kid's venue for a family event and just about anything else imaginable.

1260 Sq. Ft.
80 Guests



Inclusions

Brand Technology

A unique and extensive suite of tools and technology to extend your brand across the entire guest experience.

- Multiple external branding opportunities via LED screens and lighting.
- Dedicated, branded reception desk in lobby.
- All wayfinding signage can display client-specified copy and logos.
- Tablet-based dining & bar menu system allows for branding to be showcased in certain venues without custom printing expense.
- LED panels at each stateroom entryway showcase your brand logo, copy and/or video.
- AV systems display your logo upon startup.



Customizable LED Screens at
Each Entryway & Ambient
Lighting to Match Your Logo



1:00 PM - 2:00 PM
3:00 PM - 4:00 PM
4:20 PM - 5:20 PM

Fredrik Johansson
Per Eriksson
Anna Seitzberg

How design is influencing passenger experience
What we do for future
Our Commitment to Sustainability

June 15th, 2021 TDS

transcend
CRUISES

RECEPTION

TILLBERG DESIGN OF SWEDEN

You will find our Guests Services team in the Main Lobby as well as an exclusive and branded desk for the charterer.

671 Sq. Ft.
20 Guests

Inclusions

Spa & Wellness

For Transcend Cruises, wellness is more than just a piece of equipment. Instead, you will experience a wellness enabled environment that extends to nearly every aspect of our offer.

- A fully dedicated well-being zone spanning over 2600 square feet on three levels.
- Outdoor-facing spa, sauna, relaxation lounge, and two private treatment rooms.
- Fitness center with Technogym equipment: cardio, strength and functional areas.
- On-demand Wellness Studio.
- Upper deck wellness area: yoga deck, rock garden, barefoot walking path.
- Workshop based yoga and fitness facility for live classes and programming.
- Additional in-room stretching/toning equipment in suites.
- Virtual yoga and fitness classes in staterooms.



Guests will enjoy working out in the well-equipped Fitness Center featuring the very latest TechnoGym equipment.

815 Sq. Ft. (including Yoga Studio)

18 Guests



Enjoy the many benefits our river facing dry sauna has to offer from mere relaxation to improved circulatory, cardiovascular, and immune functions.





The Spa's wet area features a heated relaxation pool, cold therapy room and experiential showers.

Enjoy classic, hot stone, aroma, deep tissue and other massage modalities in one of two private massage rooms. The treatments will help guests look their best for that special evening event.



The Spa Lounge is perfect for a little refreshment or relaxation following a workout or treatment. Guests will find fresh juices, smoothies and healthy bites on the menu. The Spa Lounge is also available for private meetings and dining events.

512 Sq. Ft.
25 Guests



Inclusions

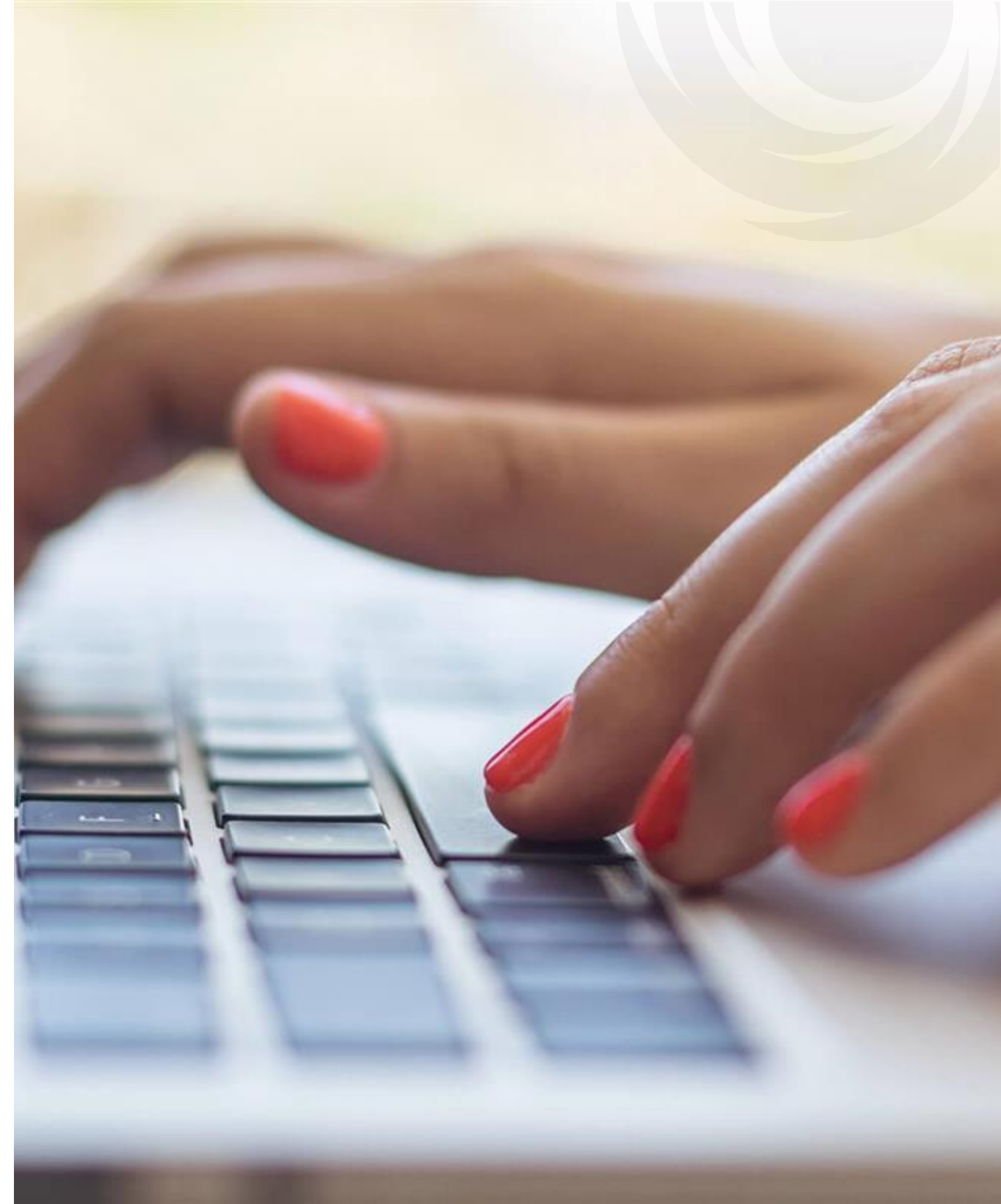
Beverage Programming

- Soft drinks, local wines and draft beers at meals.
- Exclusive on-board winery tastings and demos with partner wineries.
- Unlimited juices, soft drinks, and water.
- Unlimited coffees and teas, including specialty coffees and teas.
- Fresh-pressed vegetable and fruit juices available in the Aft Lounge.
- Soft drinks and still or sparkling water in refillable gift bottles in stateroom mini-bar.
- Welcome bottle of sparkling wine in stateroom and champagne in suites.
- Still and sparkling water stations throughout the vessel for use with refillable gift bottles.



Meeting Capabilities

- Multiple AV, screen sharing, and presentation facilities including the Forum, Aft Lounge, Private Salons, and Bar & Lounge.
- Multi-zone music system across the vessel, with channel selections for every public space.
- Digital asset storage and download for all events.
- Pre-event prep session for AV needs.
- Presentation upload in all meeting spaces with individual access.
- Guest alerts for meetings & events via iTV.
- Customized lighting for events.
- Custom logo illumination via digital displays.
- Hybrid Internet Access (HIA) for all guests; connection and access depending on geographical positioning.
- Audio options for speaker including hand-held mike, clip mikes, etc.
- Hybrid meeting capabilities for dual-located events (i.e., vessel and corporate headquarters).
- Cloud upload of meeting event recording.
- Upper deck screen utilization, available during the day and evening.
- Mobile a/v displays for use around the vessel



Inclusions

Special Concessions

exclusively for our FUSION guests

- Complimentary beer and wines served throughout the voyage in addition to meals times. Valued at ~\$2370 per night.
- A full open bar featuring soft drinks, specialty coffees, teas, beer, wine and spirits served anywhere and at any time throughout the entire voyage. Valued at \$3618 per night.
- Complimentary onboard gratuities for stateroom hosts, restaurant servers, bar tenders and others. Valued at ~\$2495 per night.
- An exclusive option period of 10 business days during which, no other potential customers can secure the proposed dates until you either execute a contract, waive your option, or the option expires.
- A right of "first refusal", which grants you 72 hours to execute a contract before the proposed dates are otherwise confirmed on a first to contract basis.





Voyage Itineraries Curation

Rhine River



Amsterdam, Netherlands



Cologne, Germany



Koblenz, Germany



Rudesheim, Germany



Strasbourg, France



Basel, Switzerland

Danube River



Vienna, Austria



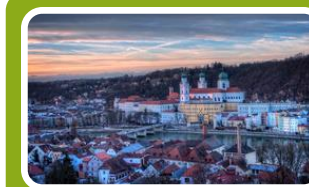
Krems/Wachau Valley,
Austria



Bratislava, Slovakia



Budapest, Hungary



Passau, Germany



Munich, Germany

At Transcend Cruises, responsible sailing standards guide us. From best-in-class sustainable practices in vessel operations and onboard service to voyage itinerary development, shore experiences and more. It is our objective to deliver the safest and best experience for our clients and guests while integrating a sustainable mindset and operation.

Infrastructure

- Stage-5 low-emission engines.
- Electric thruster system for emissions-free last mile maneuvering.
- Non-recirculating HVAC system
- Shore power support.
- 100% LED lighting vessel wide.
- Energy saving window systems.
- Sustainably sourced building materials and finishes.
- Zero-and low-VOC paints.

Hotel & On-Shore

- On-demand still and sparkling water system.
- Food waste minimization technology.
- Minimize packaging waste utilizing bulk products, ie. non-plastic water bottles and full-size, dispensing bath amenities.
- Staff and source locally.
- Supplier environmental practices protocol.
- Green Award Certification.

Let's Create.



Debra.floeder@fusion-roi.com



+1 (651) 699 0123



[Schedule a call here!](#)



Debra Floeder
Vice President, Business Development

F U S I O N

