

CAS CUSTOM SERVICESSM

FOSTERING GLOBAL COOPERATION WITH A SCIENTIST-CURATED COVID-19 PATENT LANDSCAPE REPORT

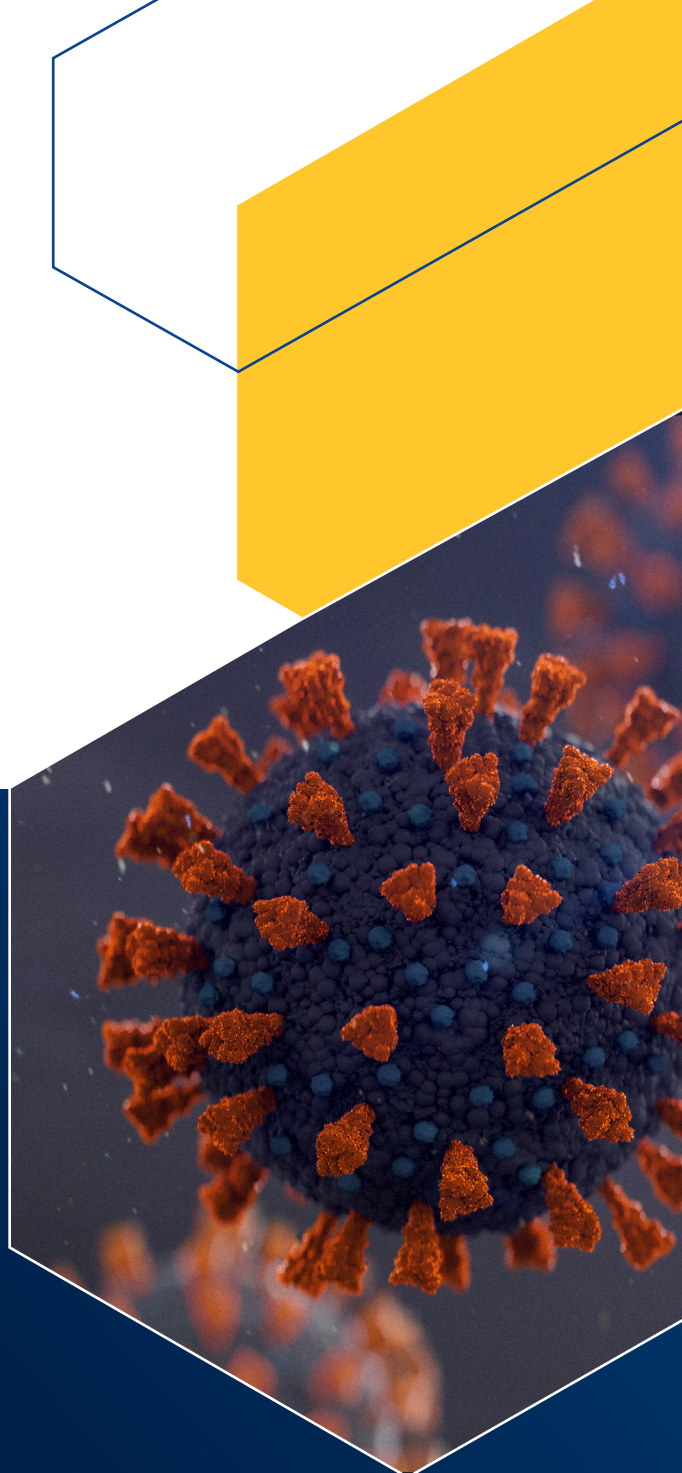
Solution success story

The challenge: Untangling the chaotic COVID-19 patent landscape for the greater good

The COVID-19 pandemic was a period of rapid innovation, from vaccine and therapeutic development to diagnostics and personal protective equipment. Many of these innovations leveraged patent and IP processes around the world.

As the center of the global IP stage, the World Intellectual Property Organization (WIPO) sought to understand and share the COVID-19-related patent landscape. This specialized agency of the United Nations embarked on the challenging yet vital task of cataloging all COVID-19 vaccines and therapeutics-related patent applications worldwide. However, the unprecedented surge in research activities spurred by the global COVID-19 health crisis significantly intensified the patent search mission.

WIPO sought to partner with a trusted scientific information solutions provider to support their patent searching process and identify and present insights in a landmark COVID-19 patent landscape report.



CAS

A division of the
American Chemical Society



The solution: Human-curated content collection and custom classification algorithms to simplify COVID-19 patent searching

WIPO partnered with CAS Custom Services to develop a tailored solution to optimize their search strategy and accelerate the development of their COVID-19 patent landscape report.

Working closely with WIPO's Technology and Innovation Support Division, CAS search experts quickly designed a structured query to identify COVID-19 vaccines and therapeutics-related patent applications. By running the custom query against the human-curated and harmonized CAS Content Collection™, an accurate and comprehensive dataset across jurisdictions and languages was obtained. The patenting activity around COVID-19 generated an extensive dataset to be analyzed for insights.

To facilitate WIPO's goal of discovering and understanding deep insights, CAS data scientists partnered with life scientists to develop and integrate custom classification algorithms and machine learning models to perform an initial dataset analysis. Leveraging robust scoring mechanisms and confidence levels, the process efficiently filtered the dataset to relevant COVID-19 vaccine and therapeutic patent applications. In just three months, CAS delivered WIPO IP experts the essential data and insights found in the COVID-19 patent landscape.

In 2022, WIPO released its initial patent landscape report on COVID-19 vaccines and therapeutics. It was then updated in April 2023 to provide the international community with up-to-date insights on related published COVID-19 patenting activity through September 2022. This initiative, supported by CAS Custom Services, represents a crucial step toward understanding the IP landscape in addressing a global health crisis. This report provides insights into lessons learned and future planning and is a valuable tool that international agencies can leverage to understand opportunities for collaboration and IP licensing.

Find out how CAS Custom Services can help you transform scientific data into actionable, evidence-based insights that maximize investment and fuel success.

Learn more at cas.org



“This patent landscape report provides researchers, decision makers, and other stakeholders with insights into how the patent system has adapted and responded to the challenges of the last two and a half years.”

WIPO Director General
Daren Tang