

Design. Build. Live Custom.



Adrian B.

HOMES

We're not just *any* home builder

Making your dreams come true with quality custom craftsman homes.

welcome

Thank you for choosing Adrian B Homes to bring your vision to life. As a family-owned company built from the ground up by Slavik and Tanya Cholak, we take pride in every detail, from the ground we build on to the families we build for. With deep roots in construction and a passion for excellence, we carry our core values of integrity, craftsmanship, and care into every home.

From your first conversation with us to the final walk-through, you'll experience clear guidance, quality work, and a team that truly values your trust. We're committed to making your building journey smooth, exciting, and memorable.

We're honored to build your future. Thank you for trusting Adrian B Homes.

Warm regards,
The Adrian B Homes Team

Slavik

Builder | ADRIAN B HOMES LLC





Founded in 2014 by husband-and-wife team Slavik and Tanya Cholak, Adrian B Homes was born from a shared passion for construction, design, and family. Named after their firstborn son, Adrian, the company is built on the values of legacy, purpose, and creating spaces where families can thrive.

With more than 175 homes built, the Cholaks combine hands-on craftsmanship with thoughtful design, ensuring every home is both functional and beautiful. From starter homes to high-end custom builds, their personal touch and dedication to detail set them apart.

For Slavik and Tanya, homeownership is about more than equity—it's about building memories, traditions, and a foundation for the future. At Adrian B Homes, they don't just build houses; they create meaningful spaces for families to truly call home.

about us

meet our team



SLAVIK CHOLAK

Builder

Experience: 15+ years in the construction industry.

Expertise: Specializes in design and construction of residential homes.

Focus: Efficiency and proficiency in construction.

Passion: Healthy homes create healthy communities.

Fun Fact: You'll likely find me at the beach, on the golf course, or out fishing. I also serve as a teaching pastor sharing truth, building faith.



TIM KOTOVICH

Project Manager

Experience: 6+ years in the construction industry.

Skills: Ensures timelines, coordination, and design details are always met.

Strengths: Keeps the project organized and moving forward even during delays.

Commitment: Makes sure the project goes smoothly as possible.

Fun Fact: Enjoys outdoor activities and can't stand stupidity.



RAUL LORENZO

Project Manager

Experience: 15+ years in the construction industry.

Specialty: Grading and anything having to do with dirt.

Strengths: Finishing what I start, precision, and attention to detail.

Commitment: Delivering Quality before Quantity.

Fun Fact: When I'm not working, I'll be fishing, hunting, or spending time with family.



Full design and construction of your new home.

This includes:

- Initial consultation & site evaluation - Ensure an understanding of vision, lifestyle needs, budget, and evaluate the lot conditions and utilities.
- Initial Construction - Pour foundation per structural specs (slab, crawlspace, or basement). Build out the home's framework, including walls, roof trusses, and sheathing. Rough-in all essential systems, including HVAC, plumbing, and electrical wiring.
- Insulation & Drywall Installation and Interior Finishes and Millwork - Ensure proper insulation is installed before wall and ceiling finishes go up. Install cabinetry, trim, doors, built-ins, hardware, flooring, tile, and paint.
- Exterior Finishes & Landscaping - Complete siding, roofing, driveways, walkways, decks/patios, and initial landscape grading/plantings.
- Final Inspections & Walkthroughs - Schedule code inspections and perform client walkthroughs to address punch list items.
- Handover & Warranty Review - Deliver keys, manuals, and warranties. Offer guidance on post-construction care and maintenance.

scope of work

**Crafting Excellence.
Why Our Homes
Stand Above the
Rest.**

From design to finishing touches, we go above and beyond. This commitment to excellence makes us the top choice for those seeking an exceptional home experience.





interior features





interior features





Interior Features





Interior Features



1050



exterior features





exterior features



Cortlandt

- 5 Bedroom
- 5 Bathroom
- Luxury Primary Ensuite
- Large Walk-in Pantry
- Large Bonus Room with full bath
- 3-car Garage
- 3,958 sqft



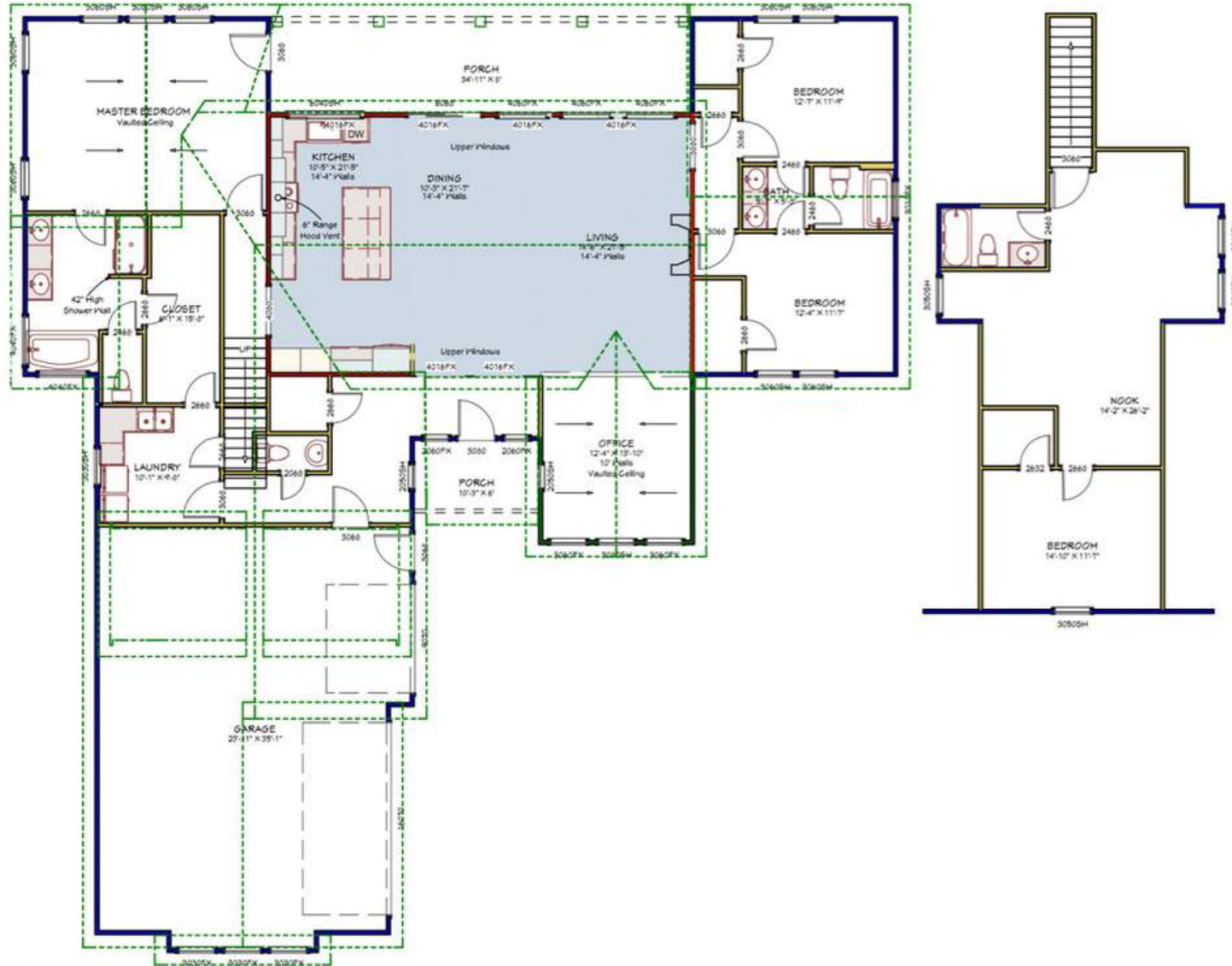


Floorplans



Courtyard

- 4 Bedroom
- 3.5 Bathroom
- Gourmet Kitchen with Island
- Luxury Primary Ensuite
- Large Bonus Room
- Covered Rear Porch
- 3,146 sqft



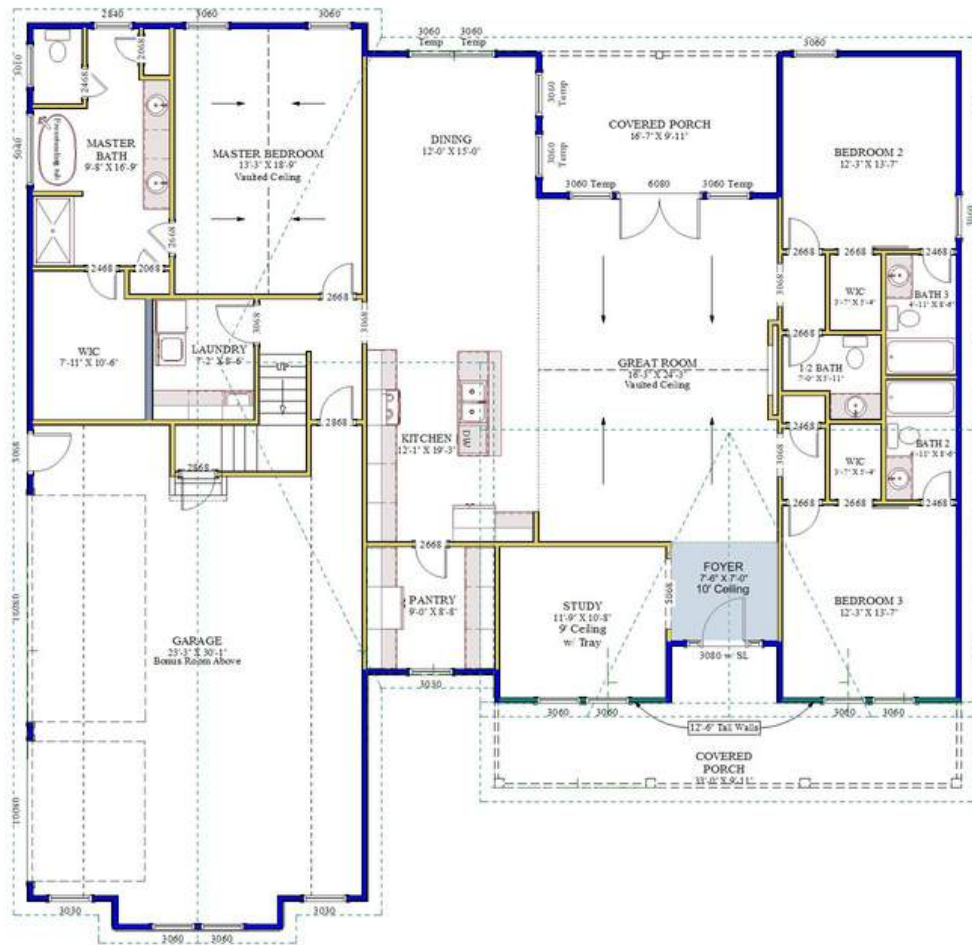
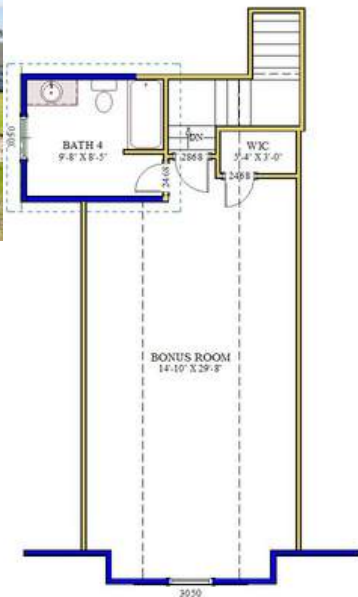


Floorplans



Hamilton

- 3 Bedroom
- 3.5 Bathroom
- Gourmet Kitchen with Island and Large Pantry
- Luxury Primary Ensuite
- Large Bonus Room
- Covered Rear Porch
- 2,993 sqft



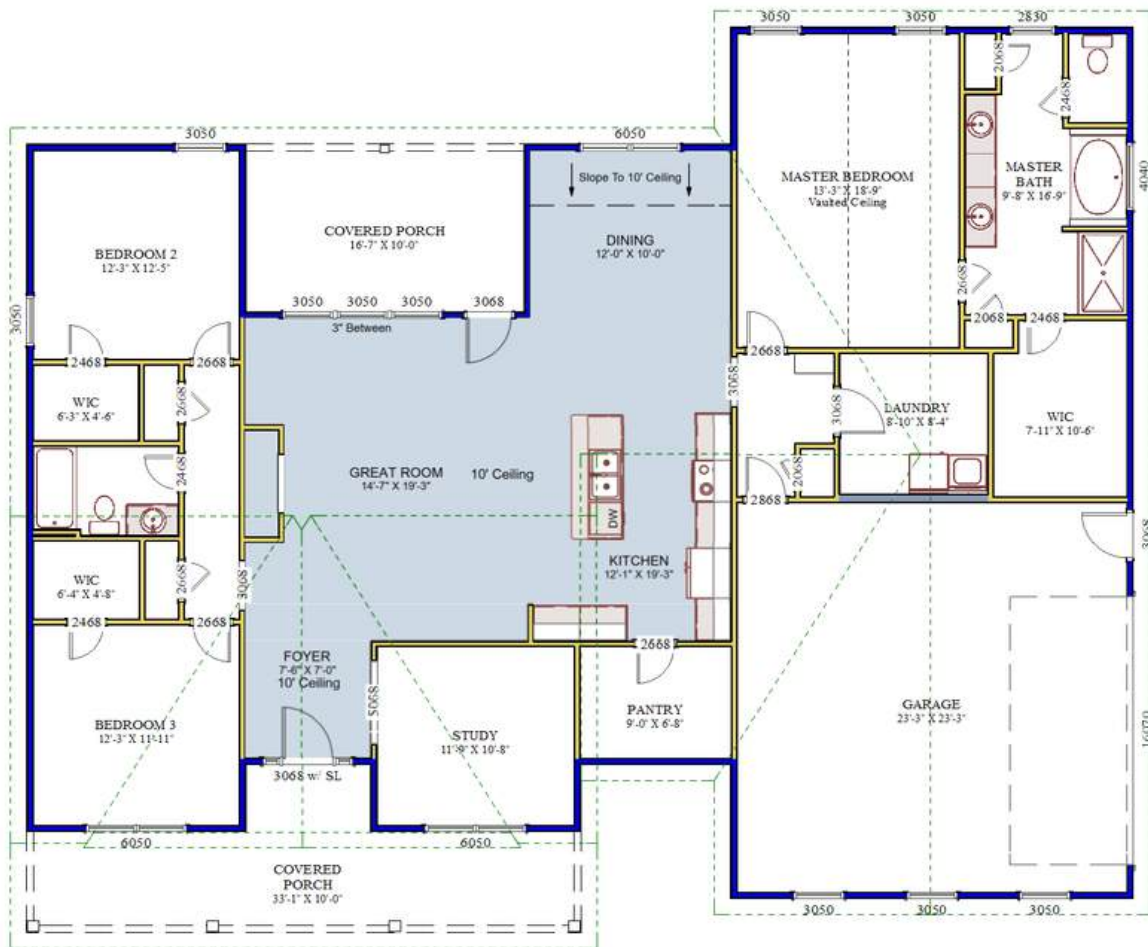


Floorplans



Cambridge

- 3 Bedroom
- 2 Bathroom
- Office
- Gourmet Kitchen with Island and Large Pantry
- Luxury Primary Ensuite
- Rocking Chair Front Porch
- Covered Rear Porch
- 2,175 sqft



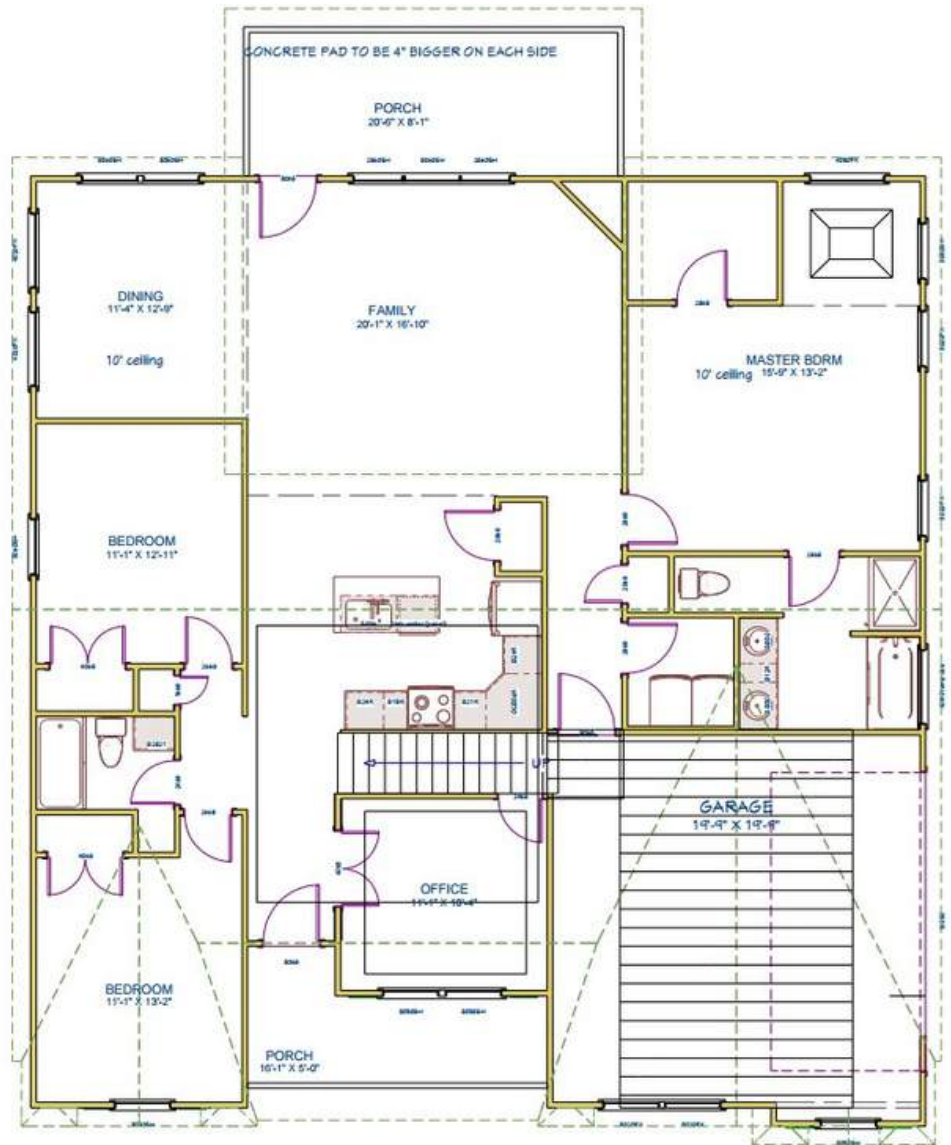


floorplans



Farmhouse: Elevation A

- 3 Bedroom
- 3 Bathroom
- Office
- Kitchen with Island
- Large Bonus Room
- Covered Rear Porch
- 2,143 sqft



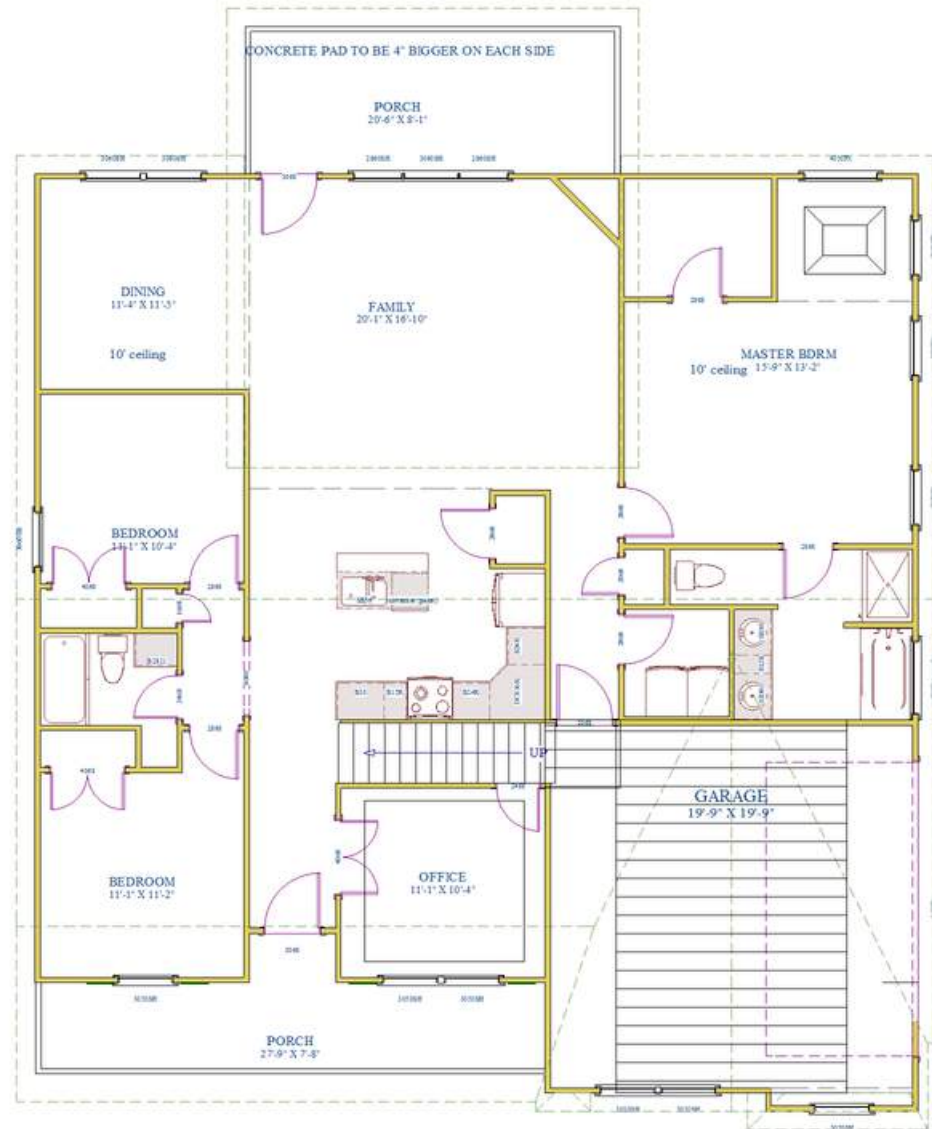


Floorplans



Farmhouse: Elevation B

- 3 Bedroom
- 3 Bathroom
- Office
- Kitchen with Island
- Large Bonus Room
- Covered Rear Porch
- 2,143 sqft



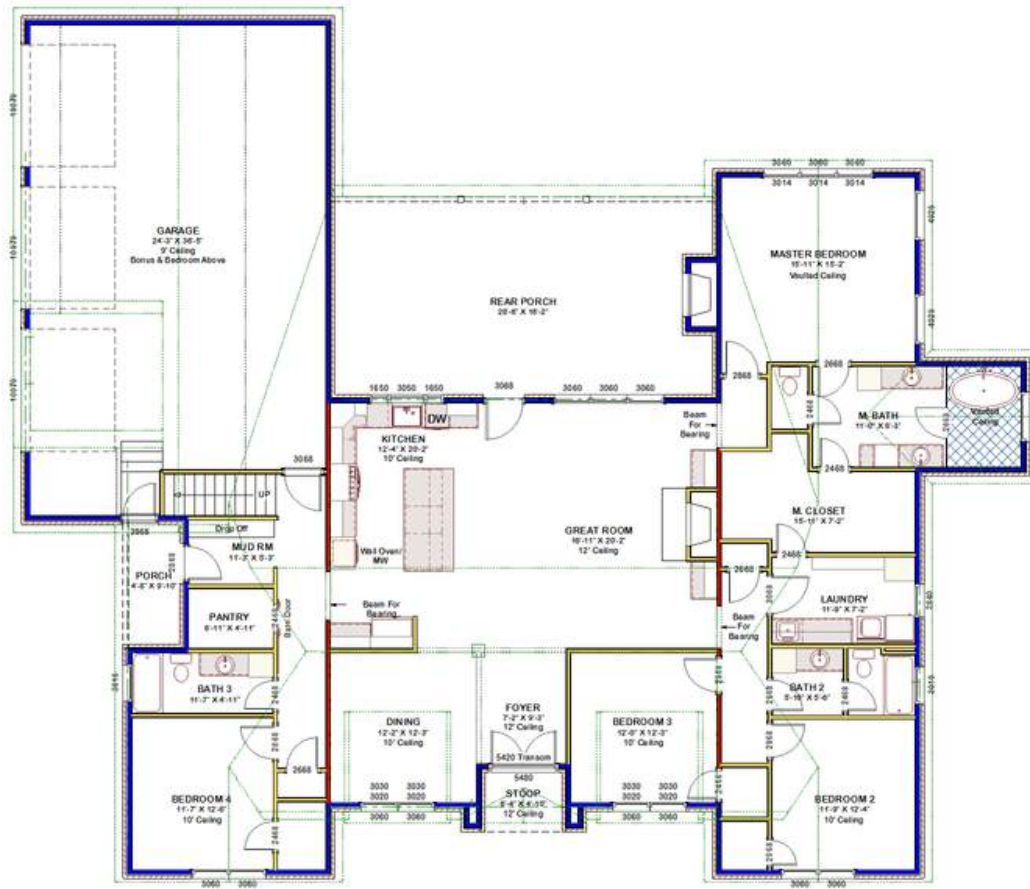
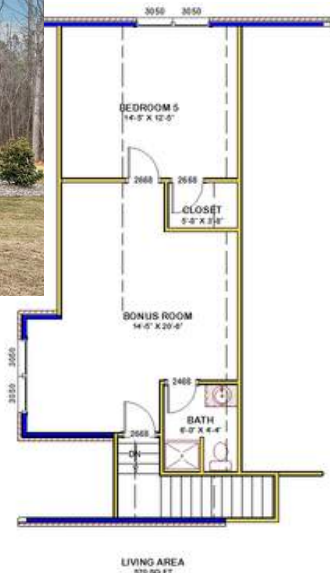


floorplans



Transitional

- 5 Bedroom
- 4 Bathroom
- 3 Car Garage
- Gourmet Kitchen
- Luxury Primary Ensuite
- Covered Rear Porch
- 3,143 sqft



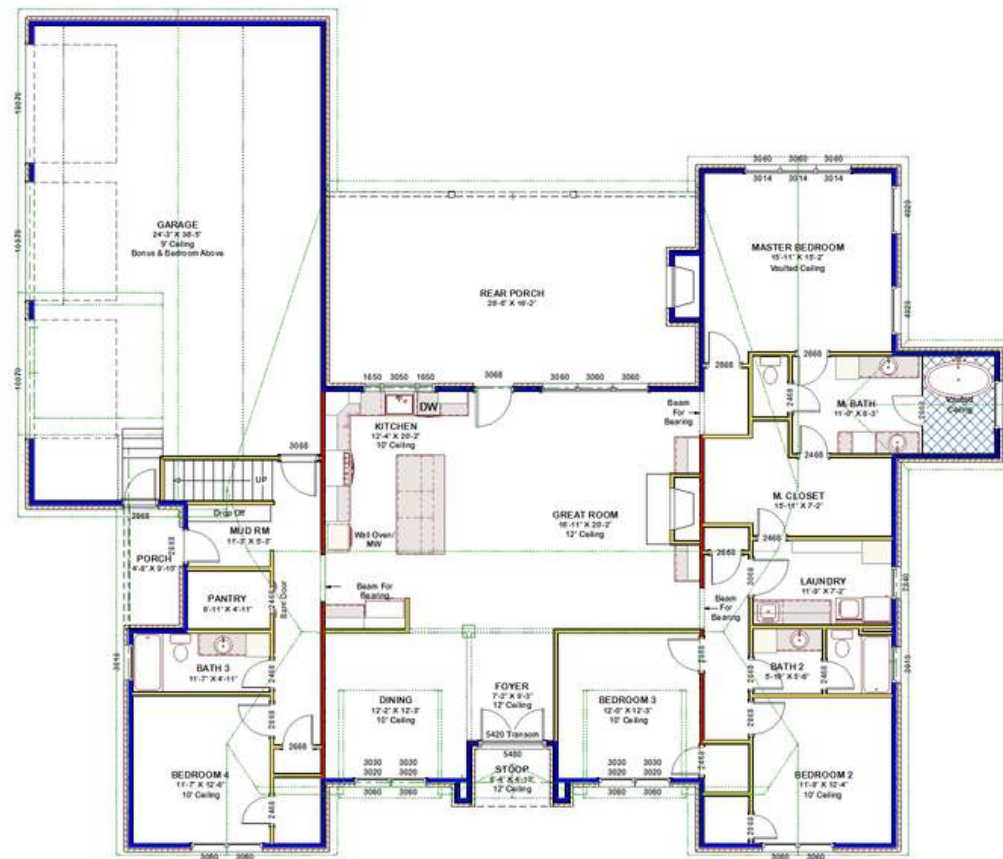
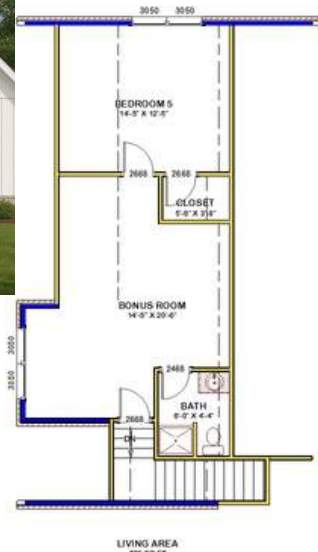


floorplans



Transitional - Farmhouse Elevation

- 5 Bedroom
- 4 Bathroom
- 3 Car Garage
- Gourmet Kitchen
- Luxury Primary Ensuite
- Covered Rear Porch
- 3,143 sqft



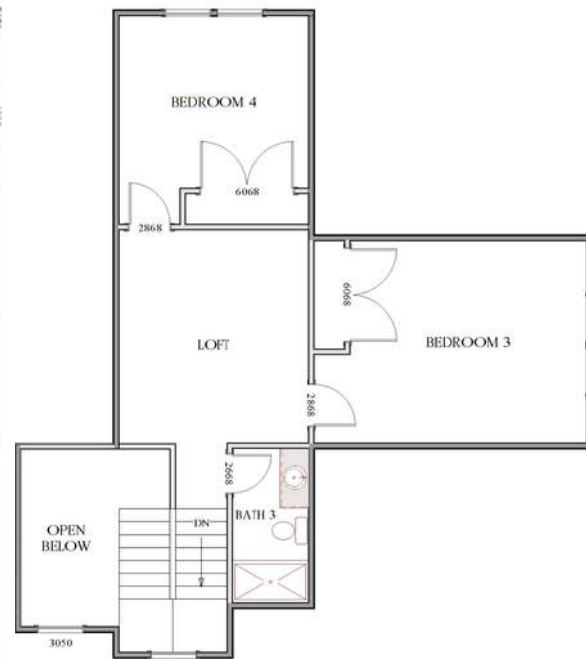
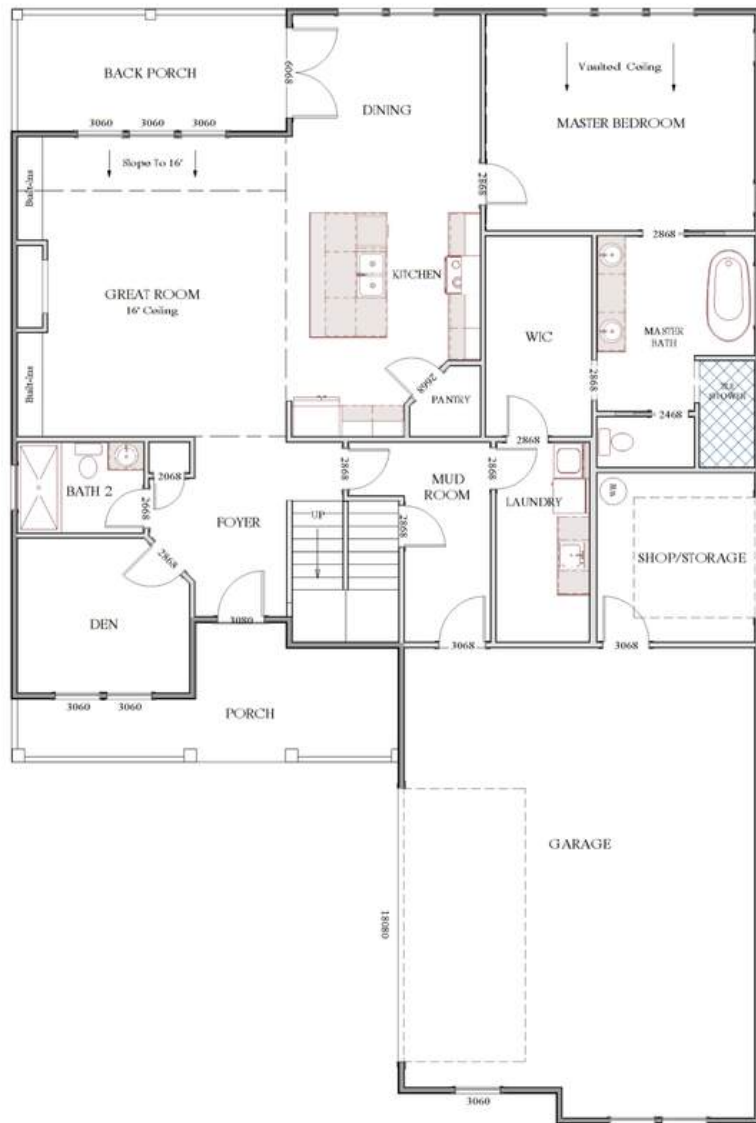


floorplans



Avalon

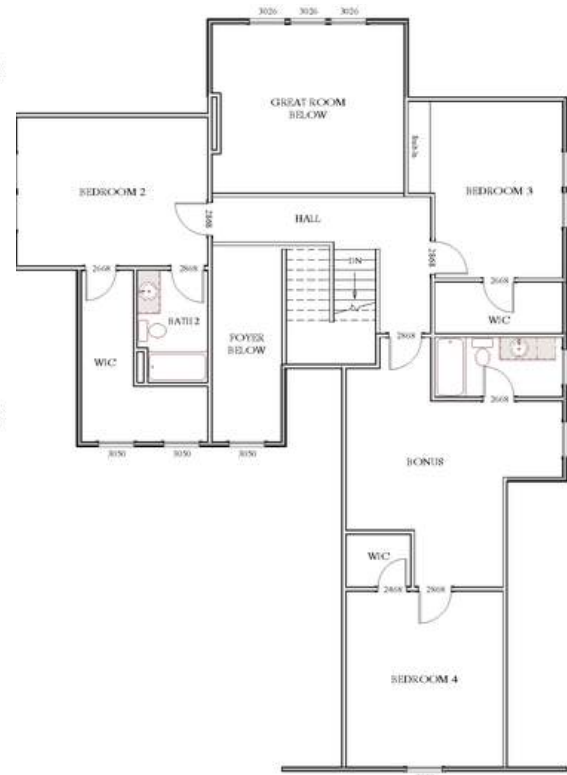
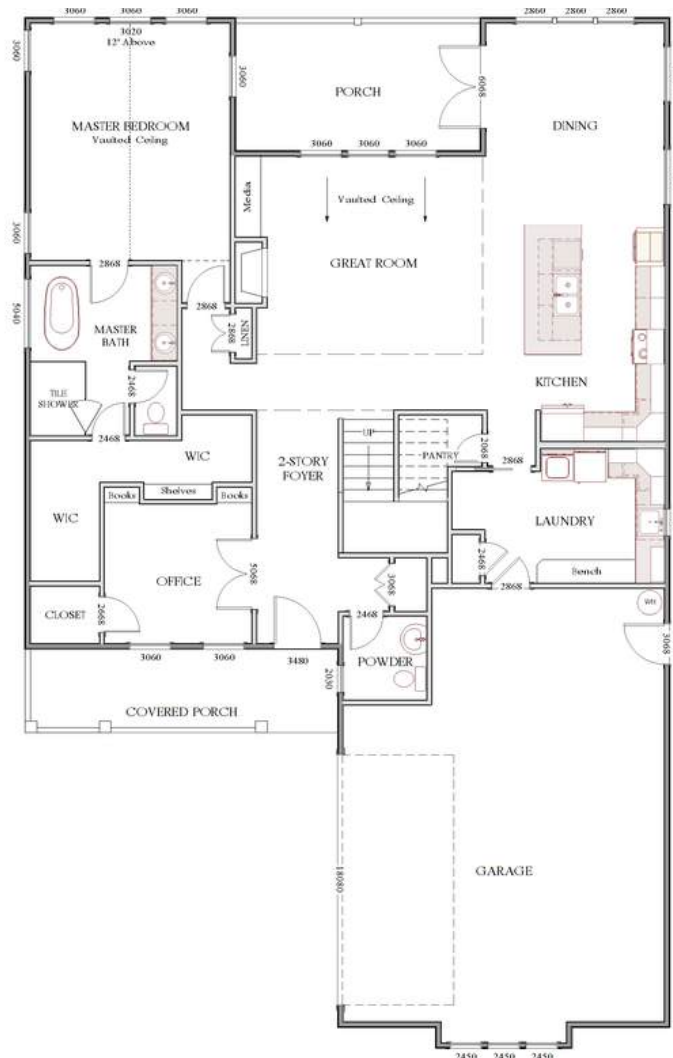
- 3 Bedroom
- 3 Bathroom
- Office
- Gourmet Kitchen
- Luxury Primary Ensuite
- Primary Bedroom on main floor
- 2,397 sqft





Teakwood

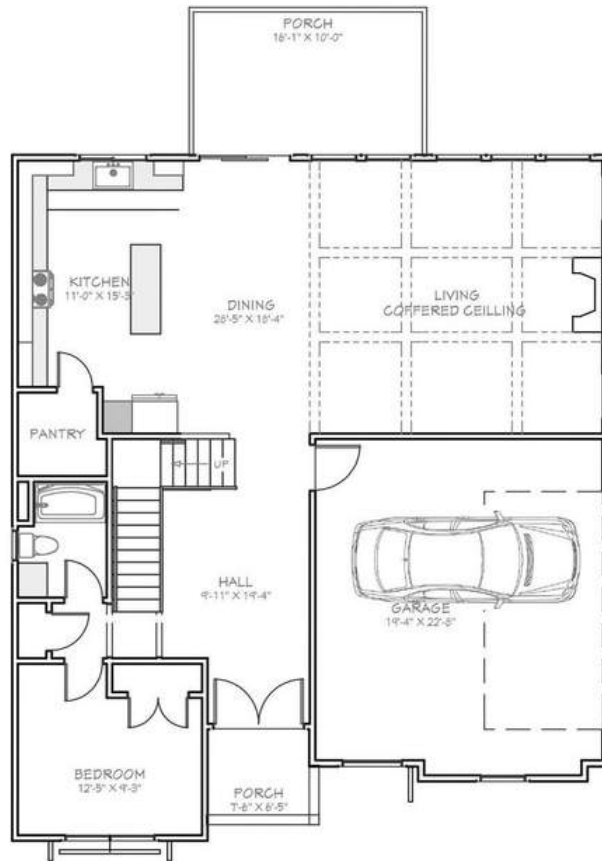
- 4 Bedroom
- 3.5 Bathroom
- Office
- Gourmet Kitchen
- Luxury Primary Ensuite
- Primary Bedroom on main floor
- 3,130 sqft



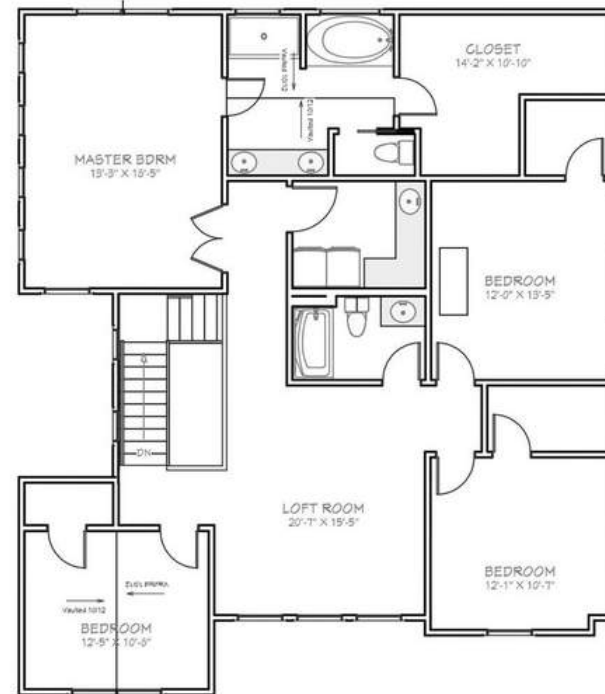


Delimont

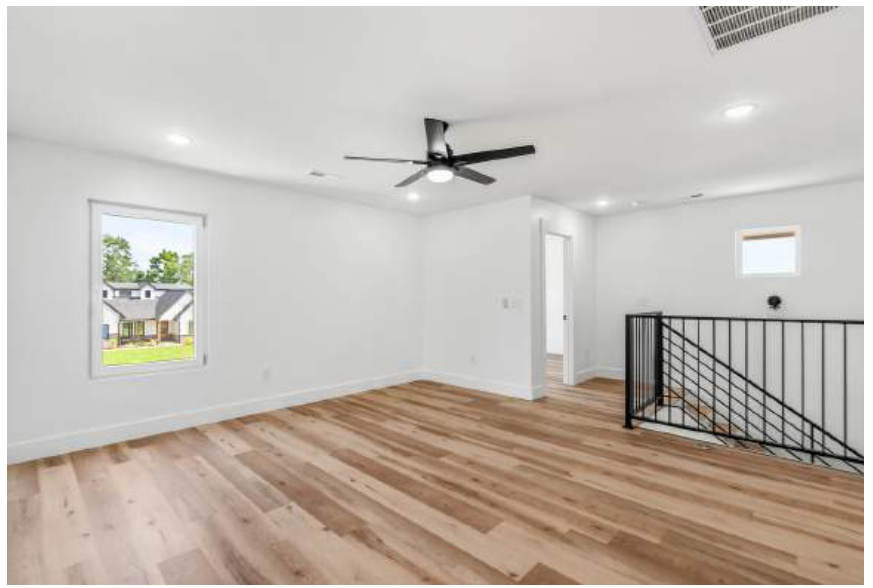
- 5 Bedroom
- 3 Bathroom
- 3 Car Garage
- Gourmet Kitchen
- Loft
- Covered Rear Porch
- 2,806 sqft



1st Floor



2nd Floor



floorplans

INTERIOR FEATURES

- 8 ft and 10 ft high ceilings, per plan
- LVP flooring in kitchen, dining, family room, foyer, and bedrooms
- Electric fireplace and stone accents
- Cedar mantle over fireplace
- 5 ft tiled shower and floors in master bath, fiberglass base
- Framed shower door in master bath
- Soaking tub in master bath
- Quartz countertops, Level 1
- Frigidaire Black-Stainless, smooth top, self-cleaning range
- Frigidaire Black-Stainless microwave/hood fan combo
- Frigidaire Black-Stainless dishwasher
- Garbage disposal with air switch
- Ice maker hookup for refrigerator
- Black-Stainless farmhouse sink
- In-cabinet wastebasket in Kitchen
- Cabinet over refrigerator
- 1x6 baseboards throughout entire home
- 12" wire shelving in all closets and pantry
- LED Puck lights throughout the home
- 36" high vanities
- Decorative metal staircase railing, per plan
- 36" wall cabinetry in Kitchen

MODERN CRAFTSMAN EXTERIOR

- Insulated modern style garage door with keypad entry
- Drywall, painted, finished garage interior
- Energy efficient insulation - R-30 ceiling, R-13 walls
- Insulated exterior doors
- Fiber cement board soffits
- Covered porches
- Vinyl siding with stone and shake detail
- Engineered trusses
- 15 LB felt underlay
- Ridge venting on roofs
- 30-year architectural grade shingles
- Sheathing 7/16" OSB board with roof clips @ 2' on center

ELECTRICAL

- 200 amp electrical circuit breaker panel
- Doorbell at front entry
- 2 exterior weatherproof electrical receptacles (Front & Rear)
- GFCI protection outlets in baths, kitchen, laundry room & garage
- Smoke/Carbon Monoxide detectors

PLUMBING & HVAC

- PVC sewer lines
- PEX water lines
- 2 exterior hose bibs
- Comfort height elongated toilets
- Passive Radon control system
- Ice maker hookup for refrigerator
- 50-gallon quick recovery water heater

INTERIOR FEATURES

- 9' and 11' wall construction on main floor, per plan
- Ventless gas fireplace, Logs and Burner included
- Stone Fireplace or Trim design above 4"x8" cedar mantle
- 8' interior doors
- 1x8 main living room base and 1x6 throughout the home
- Shiplap in master bedroom on one wall
- Shiplap on wall in dining room
- 42" wall cabinetry in Kitchen
- Farm sink in the kitchen
- Garbage disposal with air switch
- Krause Kitchen Faucet
- In-cabinet waste basket in the Kitchen
- Vented Hood above Range
- Oversized Kitchen Island
- Soft-close cabinetry with Slim Shaker doors
- Quartz countertops
- GE Cafe appliances (dishwasher, microwave, range, refrigerator)
- Tile walls in tubs and showers in secondary baths with fiberglass base (on main level), second floor baths get fiberglass inserts (no shower glass included)
- Tile master shower with semi-framed glass door
- Stand-alone tub in master bath
- Cabinetry in Laundry with sink
- Tile Master Shower with semi-framed glass door
- 36" tall vanities
- Decorative metal staircase railing, per plan
- Promar 200 satin wall paint
- Promar 400 semigloss trim paint

MODERN CRAFTSMAN EXTERIOR

- Cement-fiber exterior siding
- Super paint by Sherwin-Williams exterior paint
- Stone/Brick accents
- Insulated Modern style garage door with keypad entry
- Drywall, painted, finished garage interior
- Energy efficient insulation - R-30 ceiling, R-13 walls
- Insulated exterior doors
- Fiber cement board soffits
- Covered porches with pine tongue & groove ceilings
- Fiber cement siding with stone and shake detail
- 2x4 engineered trusses
- 15 LB felt underlay
- Ridge venting on roofs
- 30 year architectural grade shingles
- Sheathing 7/16" OSB board with roof clips @ 2' on center

ELECTRICAL

- 200 amp electrical circuit breaker panel
- Doorbell at front entry
- 2 exterior weatherproof electrical receptacles (Front & Rear)

PLUMBING & HVAC

- PVC sewer lines
- PEX water lines
- 2 exterior hose bibs
- Comfort height elongated toilets
- Tankless Gas water heater (propane tank not included)

project stages

01

PLANNING & APPROVALS

This includes preparing the site ready for excavation, setting up the formwork and pouring the concrete slab.

02

SLAB & FRAME STAGE

During this period, the foundation and framework of your home are constructed.

03

LOCK-UP STAGE

The house begins to take shape, with the exterior completed, securing the structure.

04

FIXING & INTERIOR WORK

Fixtures, fittings, and finishing touches are added to the interior.

05

FINAL INSPECTION

After a final walkthrough, any last minute adjustments are made before you move in.

06

ENJOY YOUR HOME STAGE

Time to move in and enjoy your new custom home!

We understand that staying on schedule is crucial to your peace of mind. Here's a general overview of what you can expect:

01 PLANNING & APPROVALS

Estimated Time: 2-4 weeks

02 SLAB & FRAME STAGES

Estimated Time: 4-8 weeks

03 LOCK-UP STAGE

Estimated Time: 6-10 weeks

04 FIXING & INTERIOR WORK

Estimated Time: 4-6 weeks

05 FINAL INSPECTION & HANDOVER

Estimated Time: 1-2 weeks

