



**DIESEL**<sup>®</sup>  
L I V I N G

WITH

**E** ELM SURFACES

# Diesel Living with Elm Surfaces

## From 2015 to 2025: A Decade of Style



WITH



*From the unique Diesel Living style and the know-how 'signed' by Elm Surfaces comes a new partnership. The result of research and innovation in the transformation and treatment of materials applied to a collection of wooden floors, where several formats and finishings transform every room into a 100% Diesel space.*

Dall'inconfondibile stile Diesel Living e dal know how "firmato" Elm Surfaces nasce una nuova partnership. Frutto della ricerca e innovazione nella trasformazione e trattamento dei materiali applicata a una collezione di pavimenti in legno, dove vari formati e finiture trasformano ogni ambiente in uno spazio 100% Diesel.

Un nouveau partenariat naît de l'incomparable style Diesel Living et du savoir-faire « signé » par Elm Surfaces. Le résultat de la recherche et de l'innovation dans la transformation et le traitement des matériaux appliqués à une collection de sols en bois, où les différents formats et finitions transforment chaque pièce en un espace 100 % Diesel.

# contents

# contenuto

# contenu

*Diesel Living with Elm Surfaces reserves its right to make any changes necessary to the products and to the this catalogue without any notice. It declines furthermore any responsibility for any errors contained therein, and for any printing or data errors. Colors and images are considered as merely indicative.*

Diesel Living with Elm Surfaces si riserva il diritto di apportare ai prodotti e al presente catalogo, in qualunque momento e senza preavviso, tutte le modifiche che si rendono opportune. Declina ogni responsabilità per eventuali inesattezze in esso contenute, nonché per errore di stampa o trascrizione. I colori e le immagini fotografiche sono indicativi.

*Diesel Living with Elm Surfaces se réserve le droit d'apporter des modifications aux produits et à ce catalogue à tout moment et sans préavis. Elle décline toute responsabilité pour les éventuelles inexactitudes contenues dans ce catalogue ainsi que pour les erreurs d'impression ou de transcription. Les couleurs et les images photographiques sont indicatives.*

6 COLLEZIONI

COLLECTIONS

8

TARTAN WOOD

14 NEW CHEVRON

20 D-PLANK

28 IWOOD

34 STUD TILES

44 TRUE COLORS

50 URBAN GREY

56 SPECIALS

66 TREATED CANVAS

44 TRUE COLORS

70

TECHNICAL FEATURES  
INFORMAZIONI  
TECNICHE  
INFORMATIONS  
TECHNIQUES

# collections

# collezioni

TARTAN WOOD  
NEUTRAL



TARTAN WOOD  
GREY



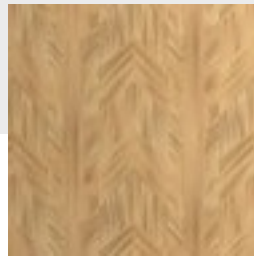
TARTAN WOOD  
GREEN



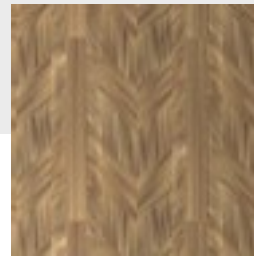
TARTAN WOOD  
BROWN



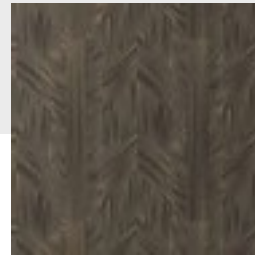
NEWCHEVRON  
NEUTRAL



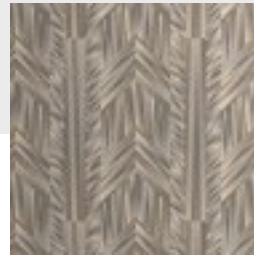
NEWCHEVRON  
WALNUT



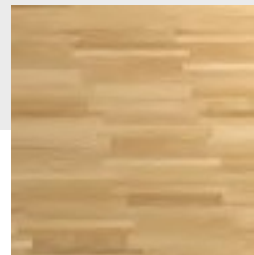
NEWCHEVRON  
EBONY



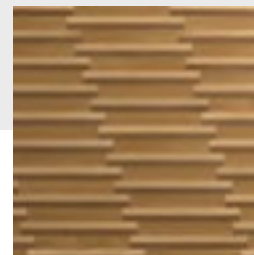
NEWCHEVRON  
GREY WASH



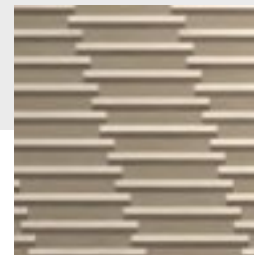
D-PLANK OAK WASH



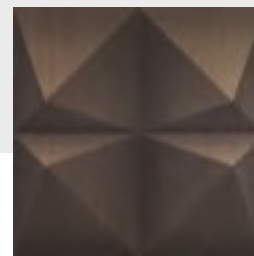
D-PLANK BROWN WASH



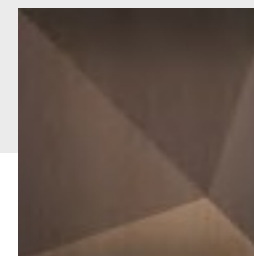
D-PLANK GREY WASH



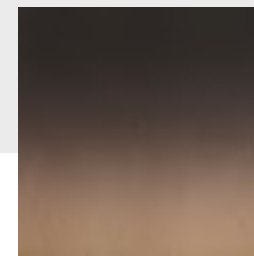
BLACK STAR



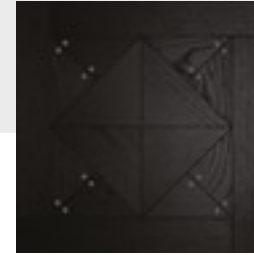
KALEIDOSTONE



DARK SHADE



STUD BLACK



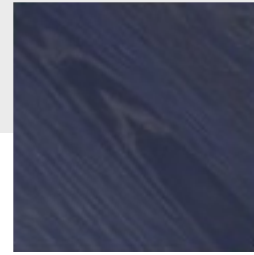
STUD GREY



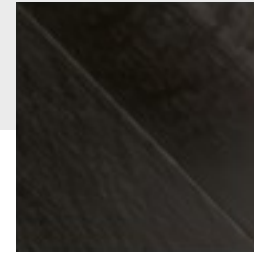
STUD OAK



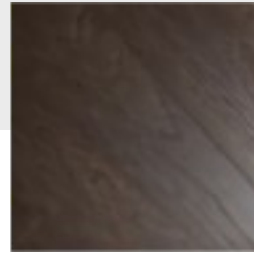
TRUE INDIGO



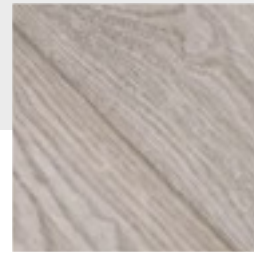
TOTAL BLACK



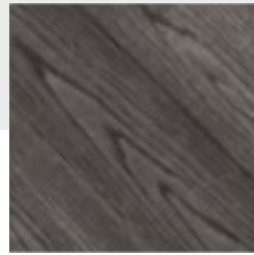
NATIVE



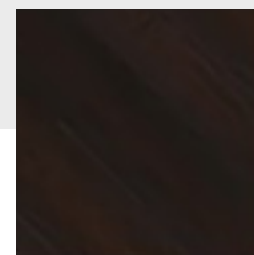
BKLEACH



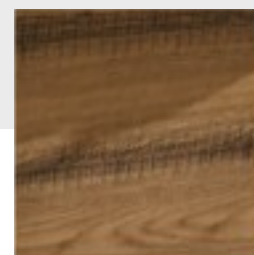
DUOTONE



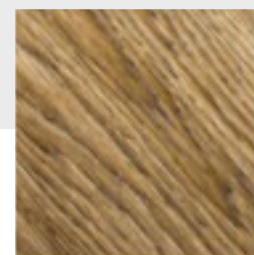
RRRED



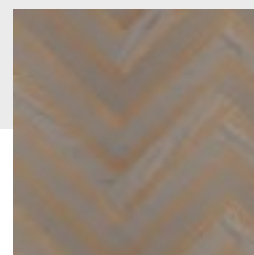
CUT OFF



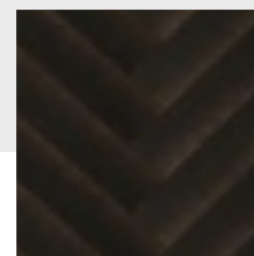
VEIN



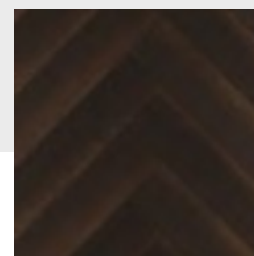
GREY  
SHADOW



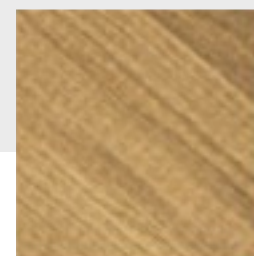
BLACK  
SHADOW



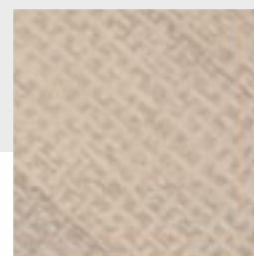
NATURAL  
SHADOW



CONTRAST CANVAS



LIGHT CANVAS



# TARTAN WOOD

*Tartan is born from the encounter between the warmth of wood and the iconic character of Scottish patterns, stars of the latest Diesel fashion shows. A play of contrasts between natural grain and bold graphic marks, in a palette ranging from elegant neutrals to more daring color combinations. A vibrant surface, pop yet sophisticated, designed to transform interiors into a true visual statement.*

Tartan nasce dall'incontro tra il calore del legno e il carattere iconico dei pattern scozzesi, protagonisti degli ultimi fashion show Diesel. Un gioco di contrasti tra venature naturali e segni grafici decisi, in una palette che spazia dai neutri eleganti a combinazioni cromatiche più audaci. Una superficie vibrante, pop ma contemporaneamente sofisticata, pensata per trasformare gli ambienti in un vero e proprio statement visivo.

*Tartan naît de la rencontre entre la chaleur du bois et le caractère iconique des motifs écossais, protagonistes des derniers défilés Diesel. Un jeu de contrastes entre veinures naturelles et signes graphiques affirmés, dans une palette allant des neutres élégants aux combinaisons chromatiques plus audacieuses. Une surface vibrante, pop mais en même temps sophistiquée, pensée pour transformer les espaces en une véritable déclaration visuelle.*

*Colors and tonalities of the images are considered as merely indicative.  
I colori e le tonalità delle immagini sono puramente indicativi.  
Les couleurs et les nuances des photos sont purement indicatives.*



• TARTAN WOOD NEUTRAL



• TARTAN WOOD GREY



• TARTAN WOOD GREEN



• TARTAN WOOD BROWN



item  
Veneer oak,  
**TARTAN WOOD NEUTRAL**  
varnished + digital print  
Rovere tranciato,  
verniciato + stampa digitale  
*Placage de chêne,*  
verni + impression numérique



item  
Veneer oak,  
**TARTAN WOOD GREEN**  
varnished + digital print  
Rovere tranciato,  
verniciato + stampa digitale  
*Placage de chêne,*  
verni + impression numérique





item  
TARTAN WOOD GREY  
Veneer oak,  
varnished + digital print  
Rovere tranciato,  
verniciato + stampa digitale  
Placage de chêne,  
verni + impression numérique



item  
TARTAN WOOD BROWN  
Veneer oak,  
varnished + digital print  
Rovere tranciato,  
verniciato + stampa digitale  
Placage de chêne,  
verni + impression numérique

# NEW CHEVRON

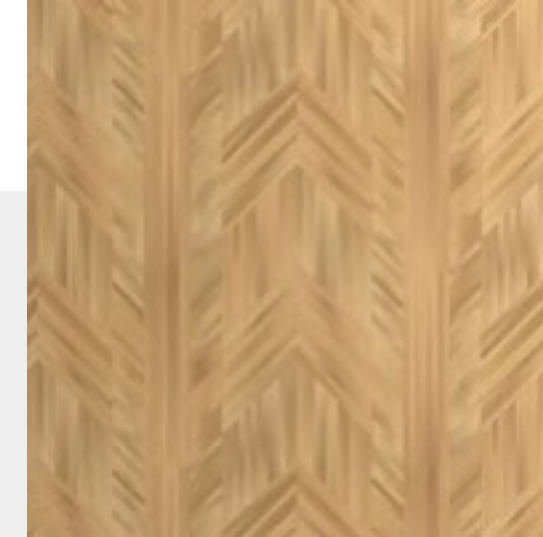
## COLLECTION

*New Chevron reinterprets the herringbone layout with a freer, more rhythmic design that recalls the elegance of historic European floors while embracing a modern attitude. The slats, available in oak, walnut, ebony and gray wash, weave together in a perfect balance of light and shadow. The result is a refined dynamism that evokes textile yarns and frayed weaves, an unmistakable material signature of the Diesel world.*

New Chevron reinterpreta la posa a spina con un disegno più libero e ritmato, che richiama l'eleganza dei pavimenti storici europei ma con un'attitudine modern. Le listelle, disponibili in rovere, noce, ebano e gray wash, si intrecciano in un equilibrio perfetto di luci e ombre. Il risultato è un dinamismo raffinato che richiama i filati tessili e le trame sfilacciate, firma materica inconfondibile del mondo Diesel.

*New Chevron réinterprète la pose en chevrons avec un dessin plus libre et rythmé, qui rappelle l'élégance des sols historiques européens tout en adoptant une attitude moderne. Les lamelles, disponibles en chêne, noyer, ébène et gray wash, s'entrelacent dans un équilibre parfait de lumières et d'ombres. Le résultat est un dynamisme raffiné qui évoque les fils textiles et les trames effilochées, signature matérielle inconfondable de l'univers Diesel.*

*Colors and tonalities of the images are considered as merely indicative.  
I colori e le tonalità delle immagini sono puramente indicativi.  
Les couleurs et les nuances des photos sont purement indicatives.*



• NEW CHEVRON NEUTRAL



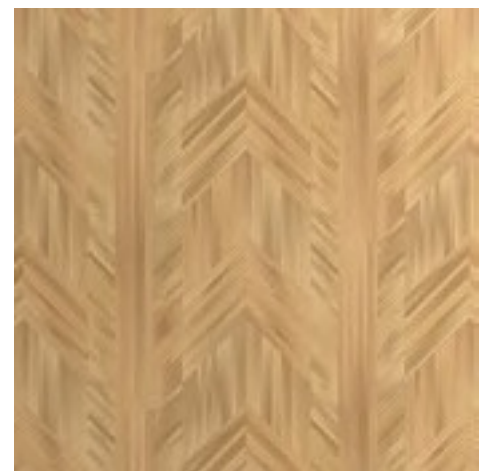
• NEW CHEVRON EBONY



• NEW CHEVRON WALNUT



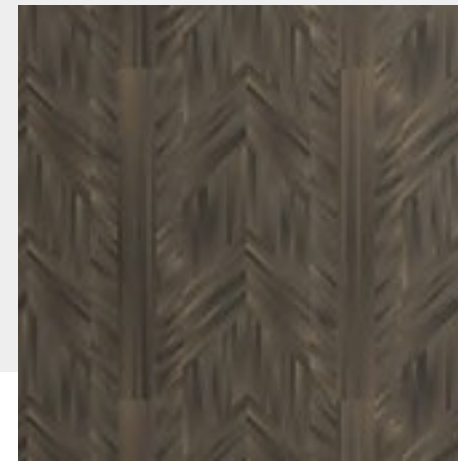
• NEW CHEVRON GREY WASH



*item*  
NEW CHEVRON NEUTRAL

*Oak  
brushed,  
lacquered color*

Rovere  
spazzolato,  
verniciato a colore  
Chêne brossé,  
peint en couleur

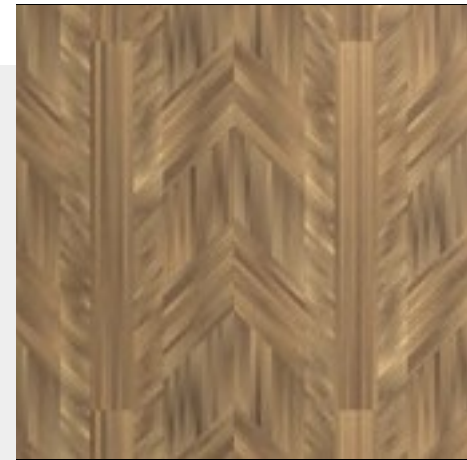


*item*  
NEW CHEVRON EBONY

*Veneer oak,  
varnished + digital print*

Rovere tranciato,  
verniciato + stampa digitale  
Placage de chêne,  
verni + impression numérique

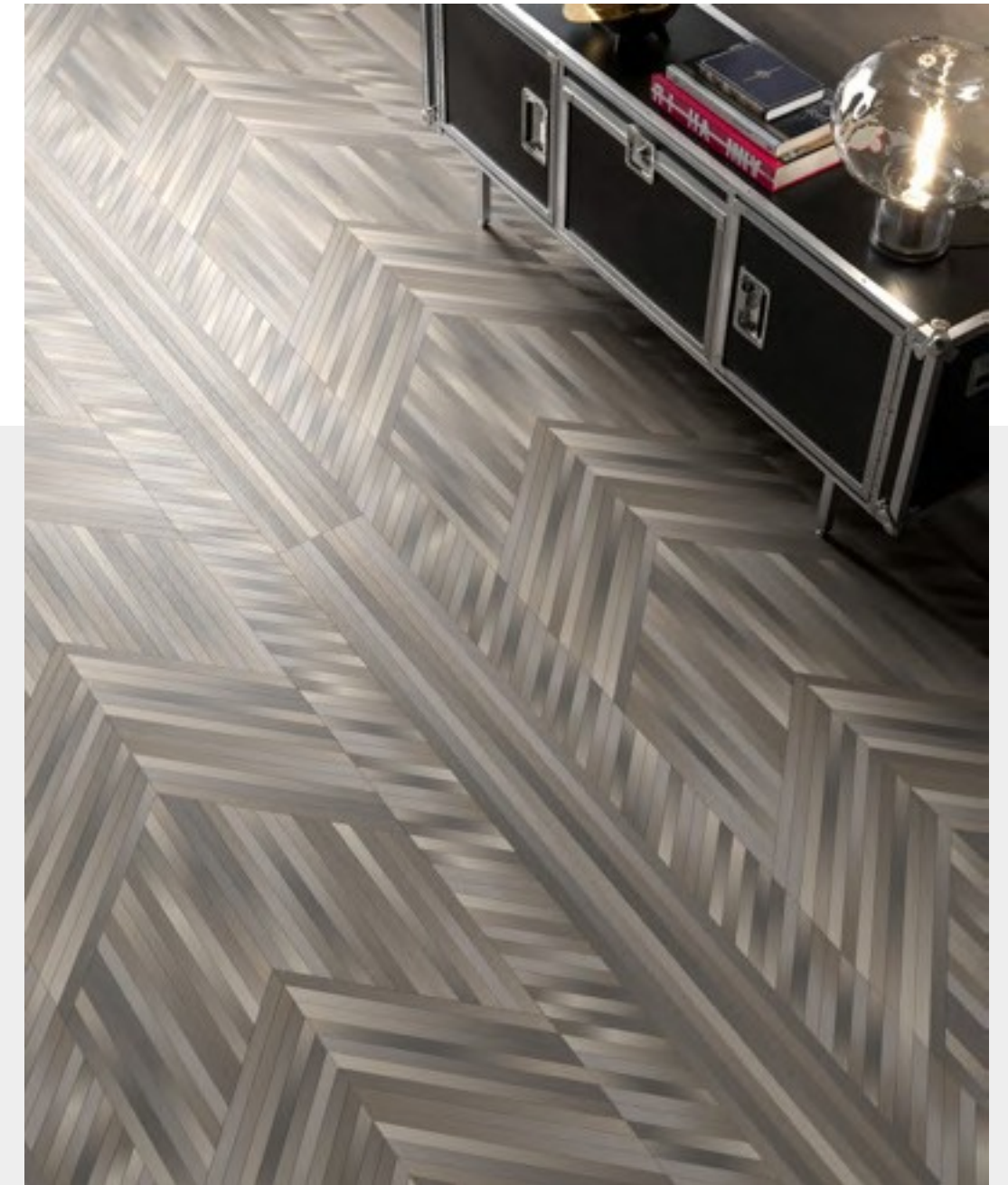




*item*  
**NEW CHEVRON  
WALNUT**  
*Veneer oak,  
varnished + digital print*  
Rovere tranciato,  
verniciato + stampa digitale  
*Placage de chêne,  
verni + impression numérique*



*item*  
**NEW CHEVRON  
GREY WASH**  
*Oak  
brushed,  
lacquered color*  
Rovere  
spazzolato,  
verniciato a colore  
*Chêne brossé,  
peint en couleur*



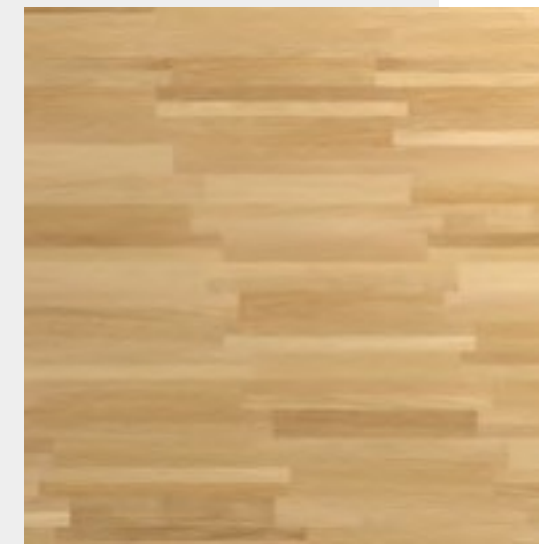
# D-PLANK

COLLECTION

*D-Plank revolutionizes tradition with a precise, modular design, carefully calibrated, where each board fits into a measured, impactful graphic rhythm. The regular geometries, inspired by the world of prints and the brand's iconic patterns, bring order and structure to the space without losing warmth or naturalness. The shades – from amber honey tones to dusty greys and whites – enhance the collection's versatility, offering cross-cutting solutions for interiors with a bold yet balanced style.*

D-Plank, rivoluziona la tradizione con un disegno modulare preciso, calibrato, dove ogni asse si incastra in un ritmo grafico misurato e d'impatto. Le geometrie regolari, ispirate al mondo delle stampe e dei pattern iconici del brand, conferiscono ordine e struttura allo spazio, senza perdere in calore o naturalezza. Le tonalità – dai miele ambrati ai grigi e bianchi polverosi – amplificano la versatilità della collezione, offrendo soluzioni trasversali per ambienti dallo stile deciso ma equilibrato.

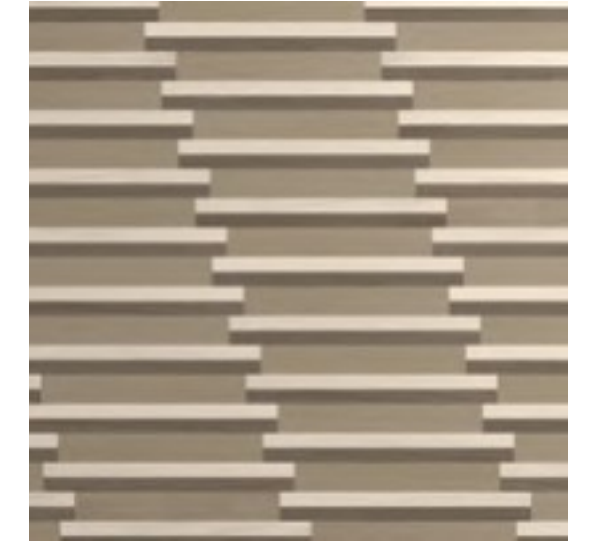
*D-Plank révolutionne la tradition avec un dessin modulaire précis, calibré, où chaque planche s'emboîte dans un rythme graphique mesuré et percutant. Les géométries régulières, inspirées de l'univers des imprimés et des motifs iconiques de la marque, confèrent ordre et structure à l'espace, sans rien perdre de chaleur ni de naturel. Les tonalités – des miels ambrés aux gris et blancs poudrés – amplifient la polyvalence de la collection, offrant des solutions transversales pour des intérieurs au style affirmé mais équilibré.*



• D-PLANK OAK WASH

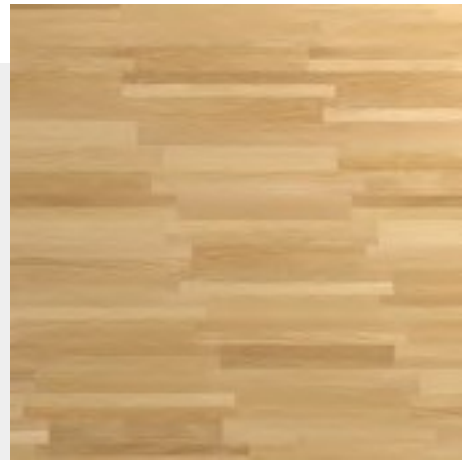
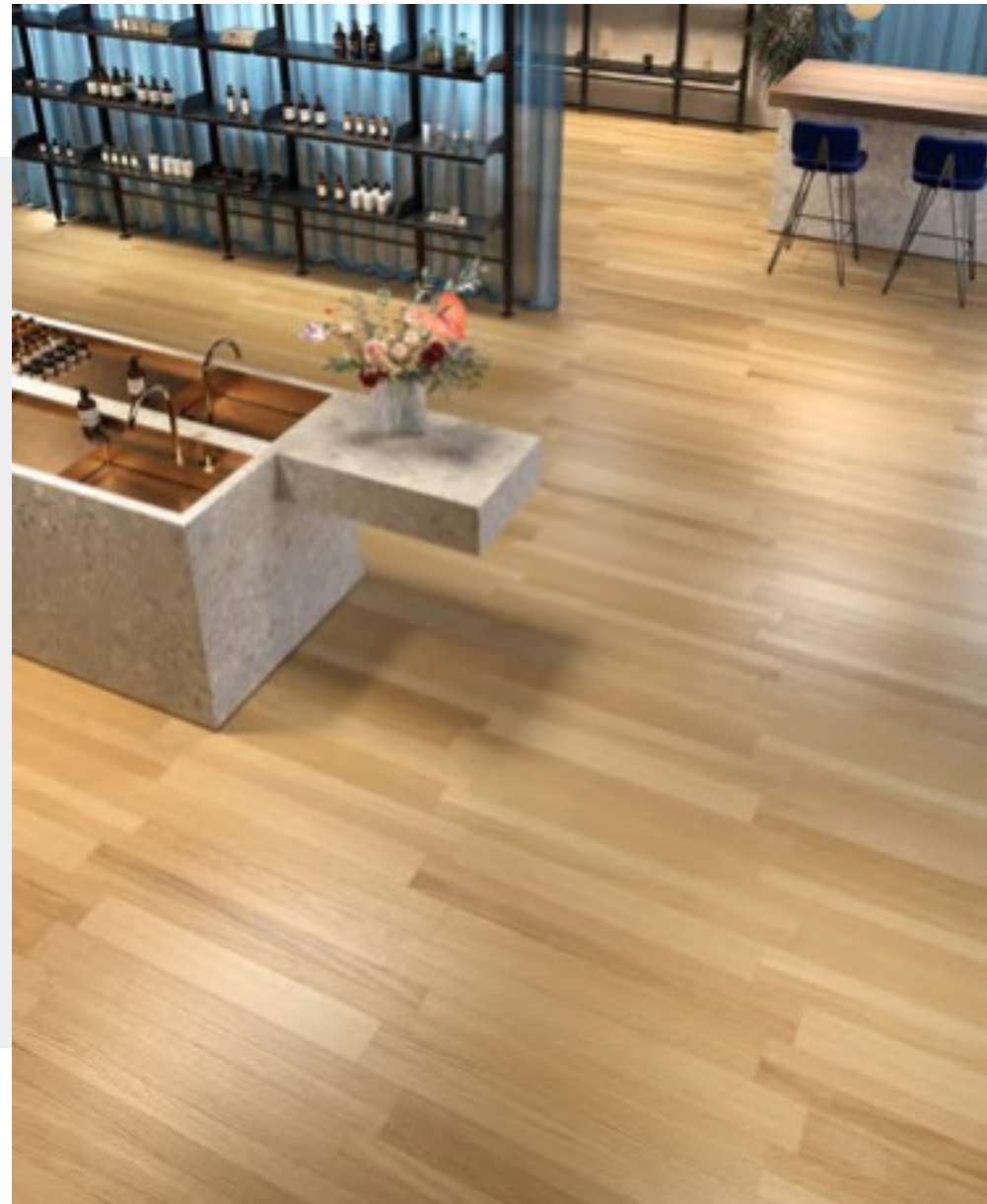


• D-PLANK BROWN WASH



• D-PLANK GREY WASH

*Colors and tonalities of the images are considered as merely indicative.  
I colori e le tonalità delle immagini sono puramente indicativi.  
Les couleurs et les nuances des photos sont purement indicatives.*



item  
D-PLANK OAK WASH  
*Veneer oak,  
varnished*  
Rovere tranciato,  
verniciato  
*Placage de chêne,  
verni*

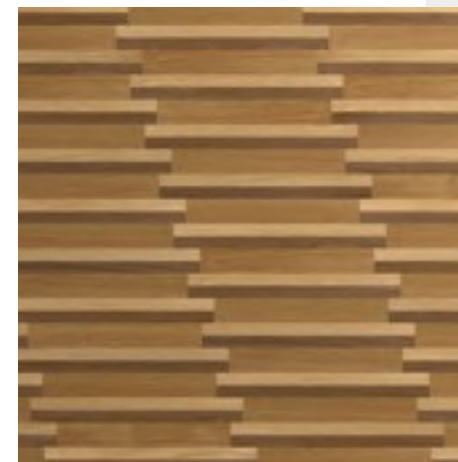
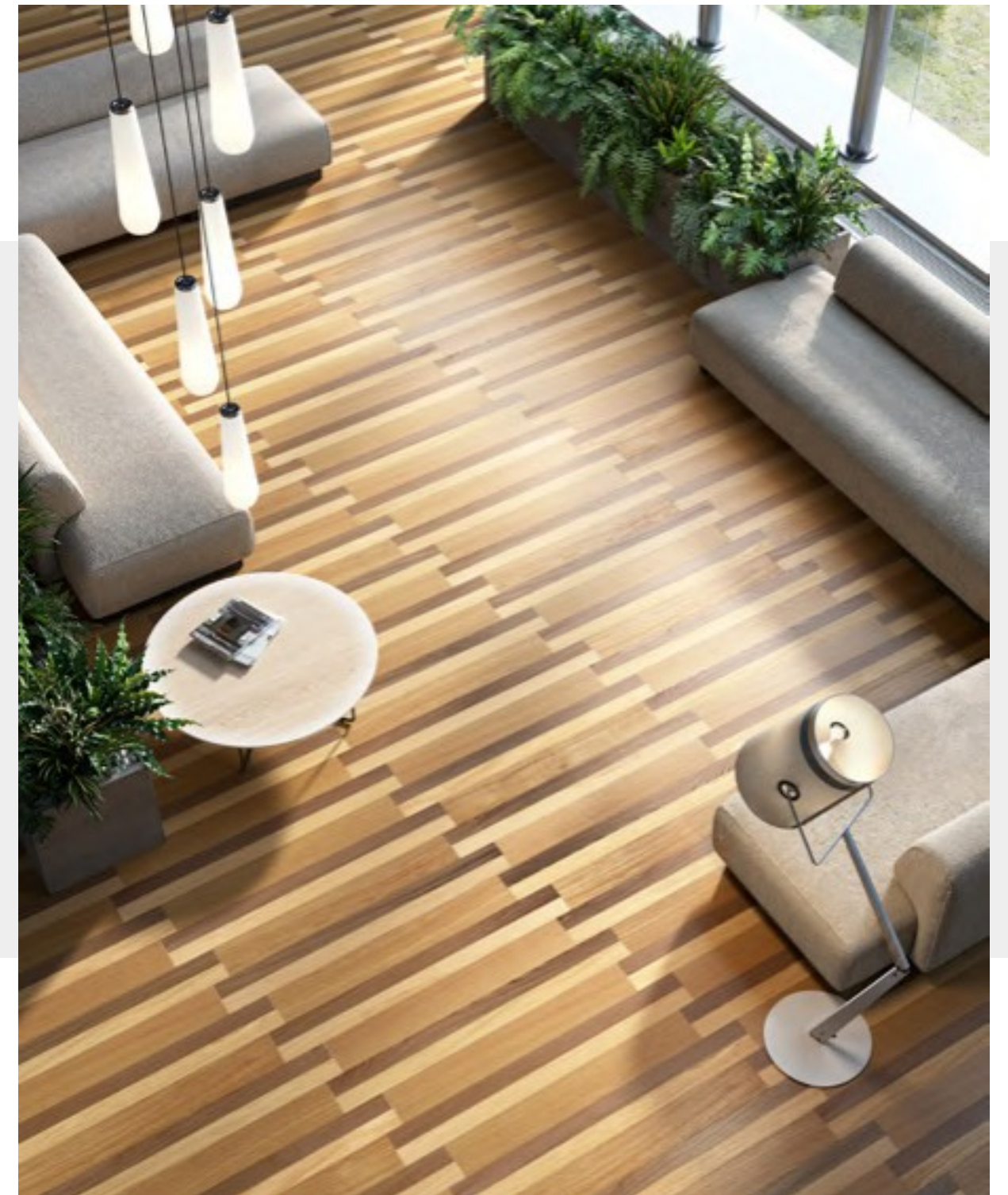


D-PLANK COLLECTION



DIESEL LIVING WITH Elm Surfaces

D-PLANK COLLECTION



*item*  
D-PLANK BROWN WASH  
*Veneer oak,*  
*varnished*  
Rovere tranciato,  
verniciato  
*Placage de chêne,*  
*verni*



item  
D-PLANK GREY WASH  
Veneer oak,  
varnished  
Rovere tranciato,  
verniciato  
Placage de chêne,  
verni



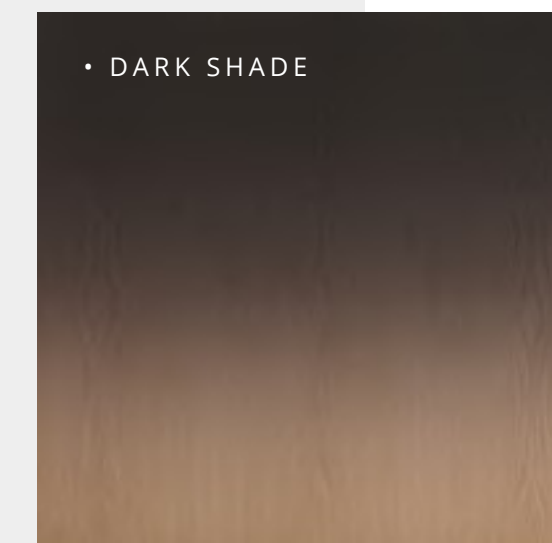
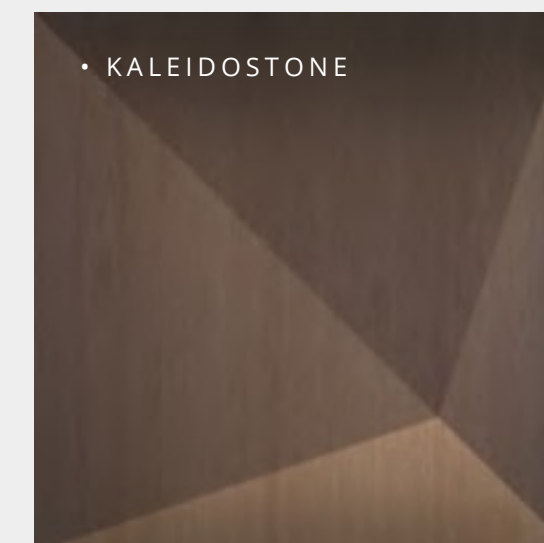
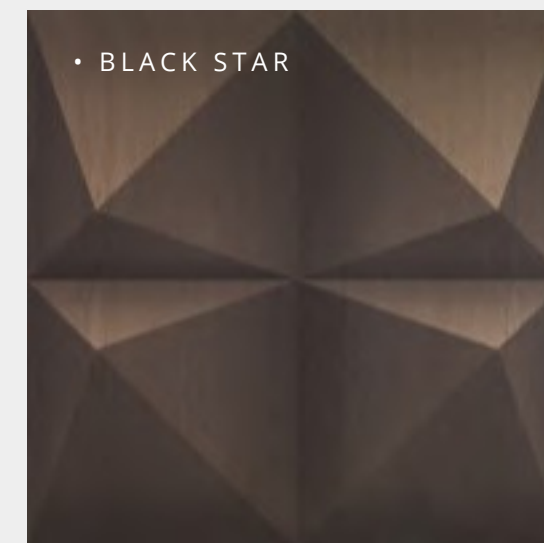
# IWOOD

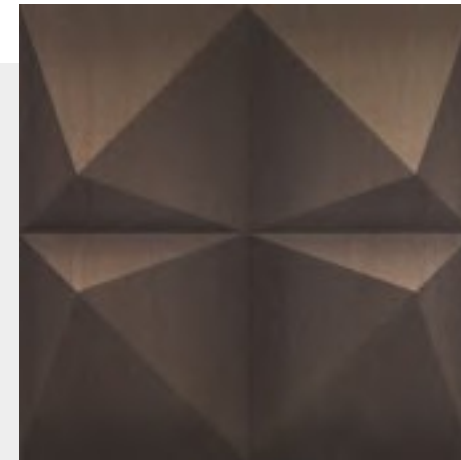
*The new Diesel Living with Elm Surfaces products, Black star, Kaleidostone and Dark Shade, suitable as floor and wall coverings, are the unique and innovative result of the fusion of various state-of-the-art technologies. The graphics are digitally printed; non-toxic, non-flammable and odourless colors are natural products with water-based formulations and solid micro-pigments.*

I nuovi prodotti Diesel Living with Elm Surfaces, Black star, Kaleidostone e Dark Shade, adatti come pavimenti e come rivestimenti, sono il risultato unico e innovativo della fusione di diverse tecnologie di ultima generazione. Le grafiche sono realizzate con la stampa digitale; colori atossici, non infiammabili e inodori sono prodotti naturali, con formulazioni a base d'acqua e micro pigmenti solidi.

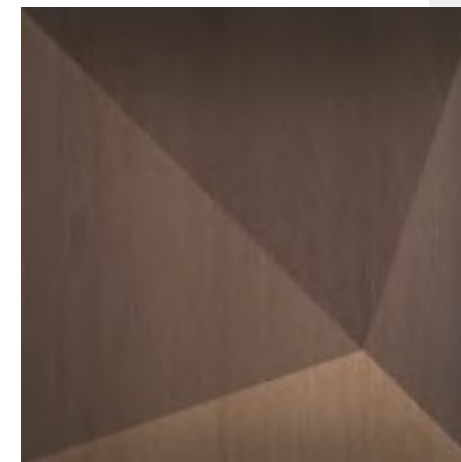
*Les nouveaux produits Diesel Living with Elm Surfaces, Black star, Kaleidostone et Dark Shade, utilisables comme revêtements de sol et de mur, sont le résultat unique et innovant de la fusion de plusieurs technologies de pointe. Les graphiques sont imprimés numériquement ; les couleurs non toxiques, ininflammables et inodores sont des produits naturels avec des formulations à base d'eau et des micro-pigments solides.*

*Colors and tonalities of the images are considered as merely indicative.  
I colori e le tonalità delle immagini sono puramente indicativi.  
Les couleurs et les nuances des photos sont purement indicatives.*

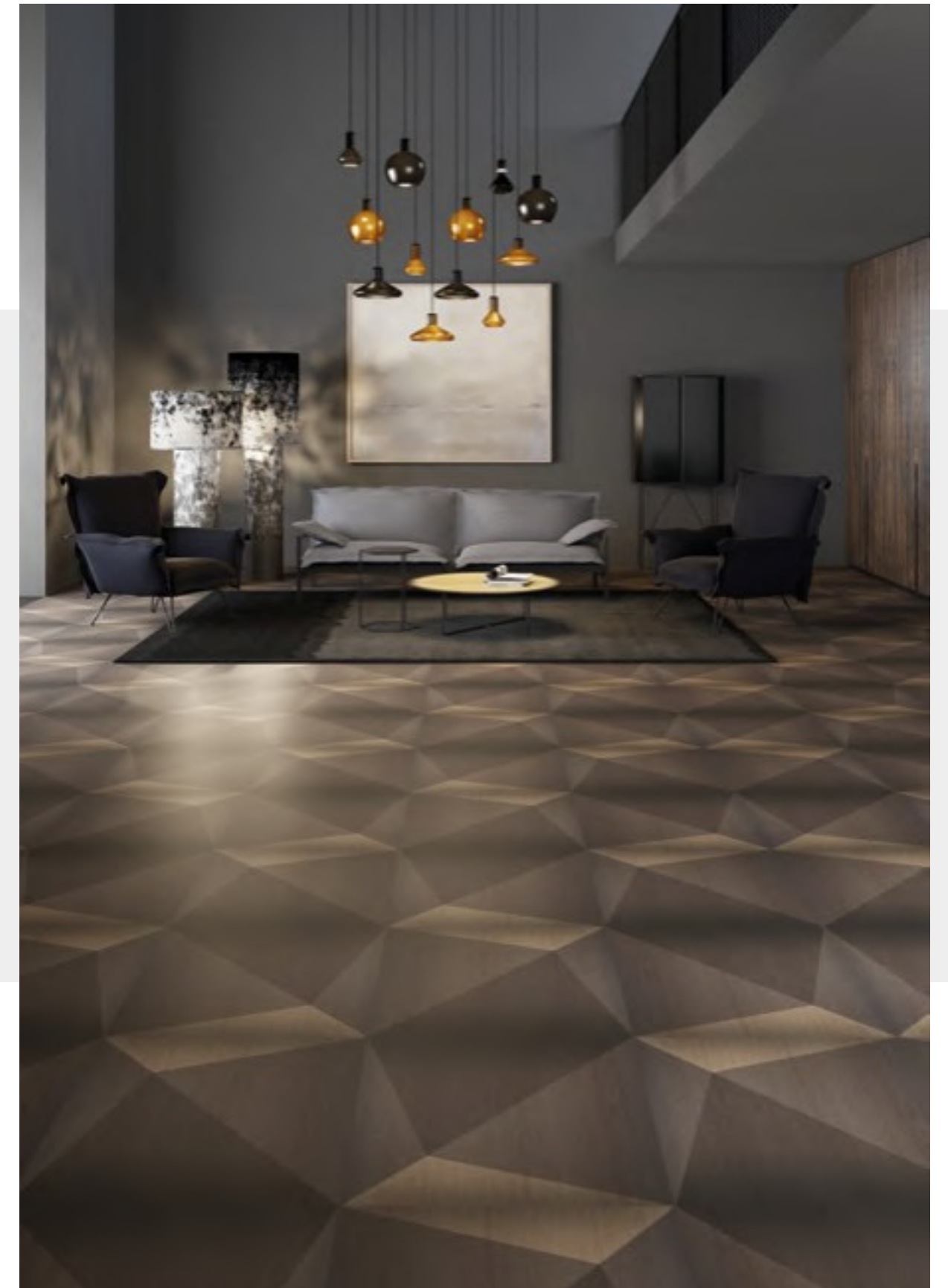




item  
**BLACK STAR**  
 veneer oak,  
 varnished + digital print  
 Rovere tranciato,  
 verniciato + stampa digitale  
 Placage de chêne,  
 verni + impression numérique



item  
**KALEIDOSTONE**  
 veneer oak,  
 varnished + digital print  
 Rovere tranciato,  
 verniciato + stampa digitale  
 Placage de chêne,  
 verni + impression numérique





item  
DARK SHADE  
veneered oak,  
varnished + digital print  
Rovere tranciato,  
verniciato + stampa digitale  
Placage de chêne,  
verni + impression numérique



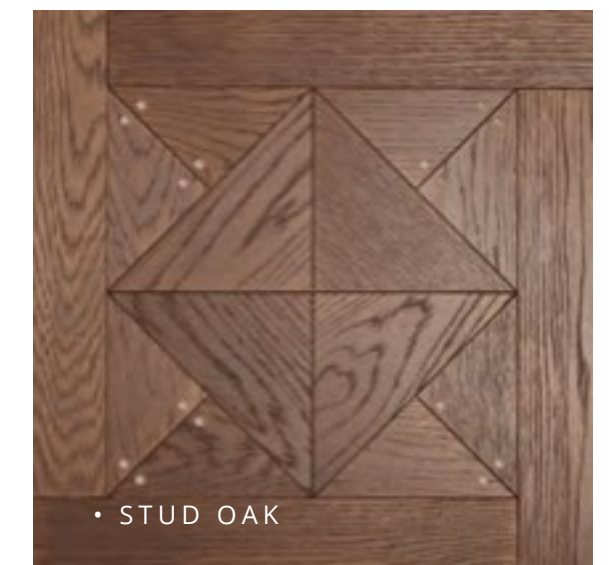
# STUD TILES

COLLECTION

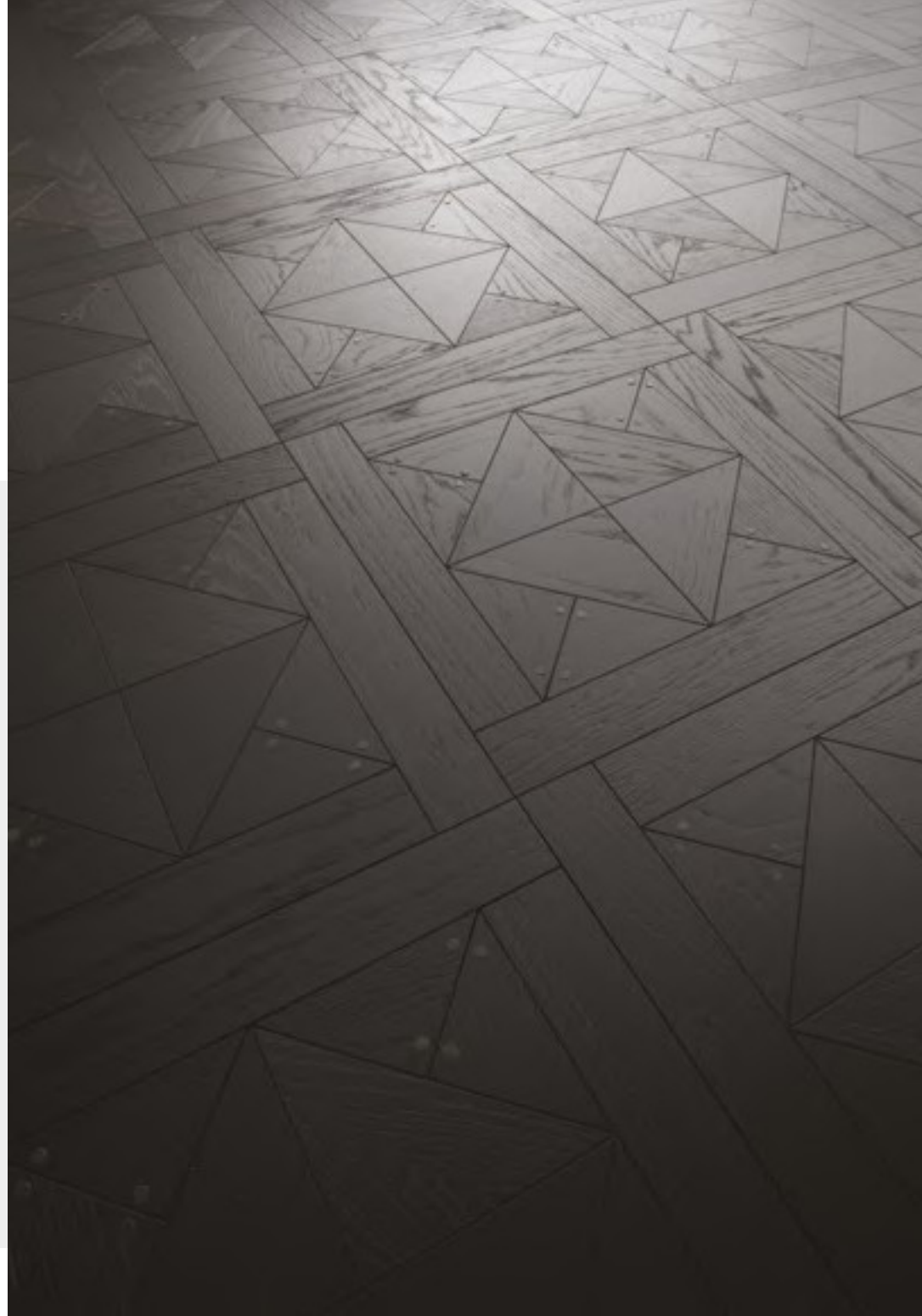
*Stud Tiles gathers our luxury proposal. Wooden stud tiles characterised by geometric inlays that recall typical Denim studs and rivets. An exclusive piece from our high-end collection, which gives a rock interpretation to classical decorations.*

Stud Tiles raggruppa la nostra offerta luxury. Quadrotte in legno caratterizzate da intarsi geometrici che richiamano borchie e rivetti tipici del Denim. Un pezzo esclusivo della nostra collezione di gamma alta, che interpeta decori classici in versione rock.

*Stud Tiles regroupe notre offre de luxe. Des carreaux en bois à clous caractérisés par des incrustations géométriques qui rappellent les clous et les rivets typiques du Denim. Une pièce exclusive de notre collection haut de gamme, interpolant des décorations classiques dans une version rock.*



*Colors and tonalities of the images are considered as merely indicative.  
I colori e le tonalità delle immagini sono puramente indicativi.  
Les couleurs et les nuances des photos sont purement indicatives.*



*item*  
STUD BLACK

*Oak  
brushed,  
lacquered color*

Rovere  
spazzolato,  
verniciato a colore  
Chêne brossé,  
peint en couleur

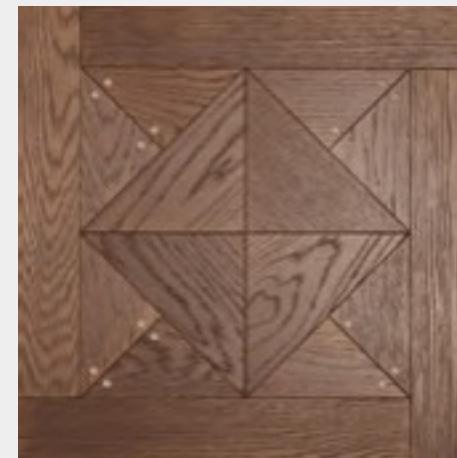
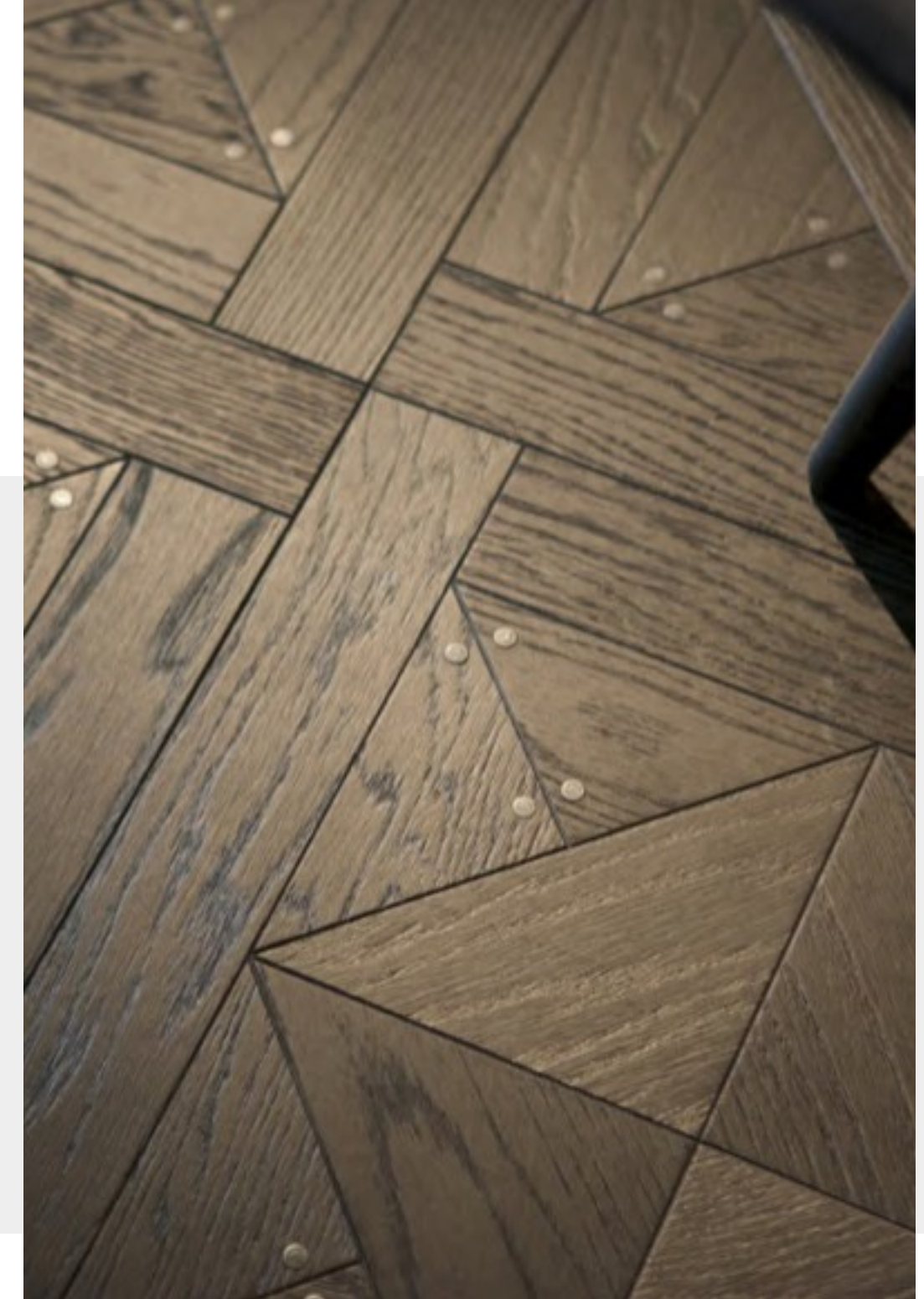






<sup>item</sup>  
**STUD GREY**  
*brushed,  
lacquered color*  
Rovere  
spazzolato,  
verniciato a colore  
Chêne brossé,  
peint en couleur





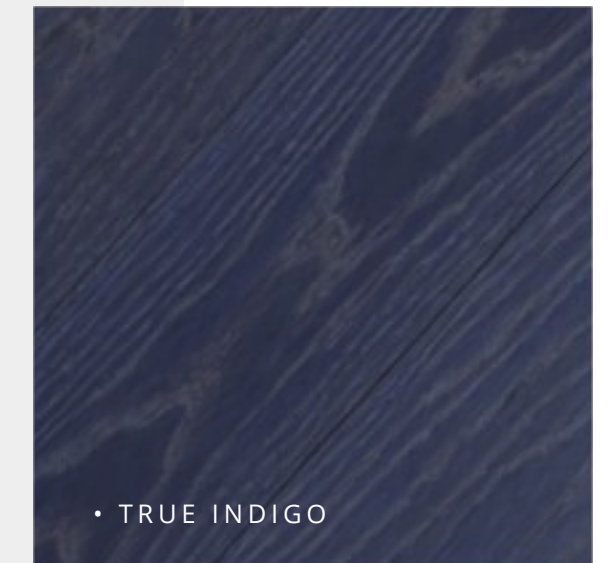
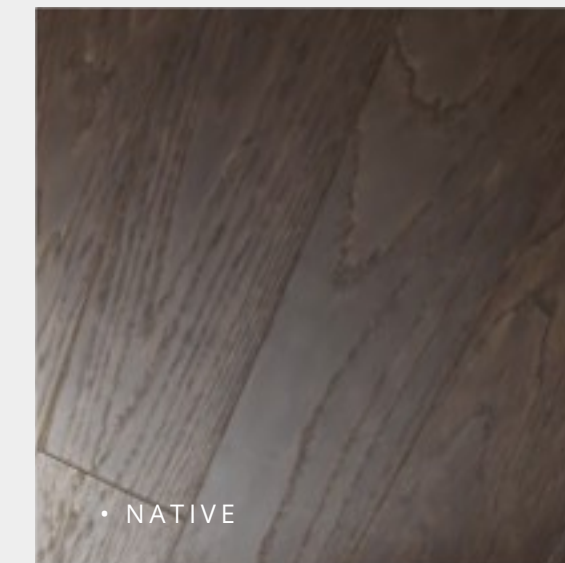
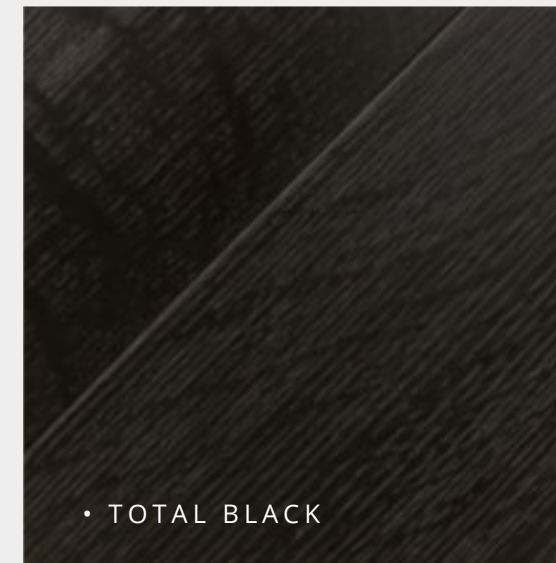
item  
STUD OAK  
oak  
brushed,  
lacquered color  
Rovere  
spazzolato,  
verniciato a colore  
Chêne brossé,  
peint en couleur

# TRUE COLORS

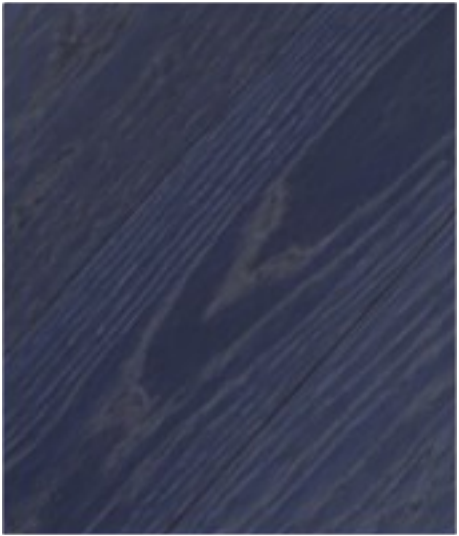
*Working on the perfect chromatisms is a must for Diesel: indigo, the typical denim colour, paints these wide planks in a natural way, living the wood veins visible. We also developed other colours which were designed and conceived as a basic underlayer through an in-depth study of the chromatic factor. The nuances developed are rich, as the black enriched with a trace of blue, reveal a clear signature expression, showing a colour that is never flat.*

Sviluppare cromatismi unici è un must per Diesel: l'indigo, per eccellenza, colore tipico del Denim, che tinge queste tavole in modo naturale lasciando ben visibili le venature del legno. Ma anche gli altri colori, ideati e pensati quali substrati basici tramite un approfondito studio del fattore cromatico. Così, le nuances prescelte, al pari del nero ricco di una punta di blu, rivelano una chiara cifra espressiva, mostrando una tinta sempre viva e mai piatta, come nel tessuto.

*Développer des couleurs uniques est un must pour Diesel : l'indigo, par excellence, une couleur typique du Denim, qui teinte ces planches de manière naturelle, en laissant le grain du bois bien visible. Mais aussi les autres couleurs, conçues et dessinées comme supports de base à travers une étude approfondie du facteur chromatique. Ainsi, les nuances choisies, comme le noir riche d'une pointe de bleu, révèlent un caractère expressif clair, montrant une teinte toujours vivante et jamais plate, comme dans le tissu.*



*Colors and tonalities of the images are considered as merely indicative.  
I colori e le tonalità delle immagini sono puramente indicativi.  
Les couleurs et les nuances des photos sont purement indicatives.*



*l'è* TRUE INDIGO

*Oak  
brushed,  
stained, lacquered*

*Rovere  
spazzolato,  
verniciato*

*Chêne brossé, verni*



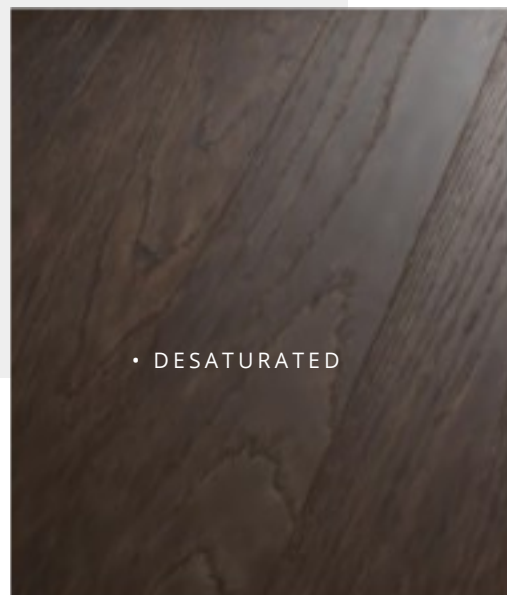
item  
NATIVE

*Oak,  
brushed,  
stained, lacquered*

Rovere  
spazzolato, verniciato  
a colore

Chêne brossé,  
peint en couleur

48



• DESATURATED



49

# URBAN GREY

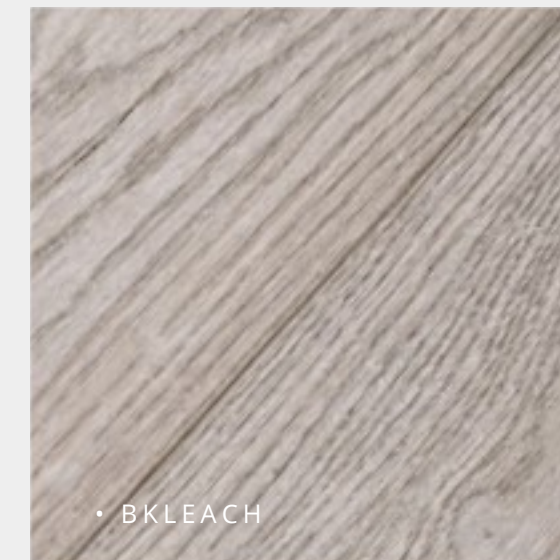
*Grey, the industrial colour par excellence, is a strong base for interiors as it is also the concrete's colour, expressive material on contemporary living spaces. It is through this set of greys that we give an interpretation of concrete, working its details in the chromatic shades and in the treatments, with refined aesthetic results.*

Il grigio, colore industriale per eccellenza, è il colore anche del cemento, espressione di modernità e del vivere contemporaneo. È con questa serie di grigi che offriamo una interpretazione di tale materiale, lavorandone i dettagli nelle sfumature cromatiche e nei processi di trattamento. Con raffinati esiti estetici sul legno delle pavimentazioni.

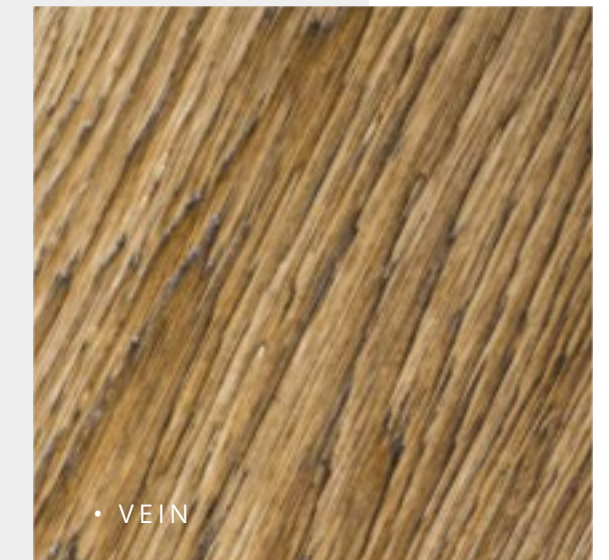
Le gris, couleur industrielle par excellence, est aussi la couleur du béton, expression de la modernité et de l'habitat contemporain. C'est avec cette série de gris que nous proposons une interprétation de ce matériau, en travaillant les détails dans les nuances de couleurs et les processus de traitement. Avec des résultats esthétiques raffinés sur les sols en bois.



• DUOTONE



• BKLEACH



• VEIN

*Colors and tonalities of the images are considered as merely indicative.  
I colori e le tonalità delle immagini sono puramente indicativi.  
Les couleurs et les nuances des photos sont purement indicatives.*

*item*  
DUOTONE

*Oak,  
brushed,  
with texture effect,  
lacquered color*

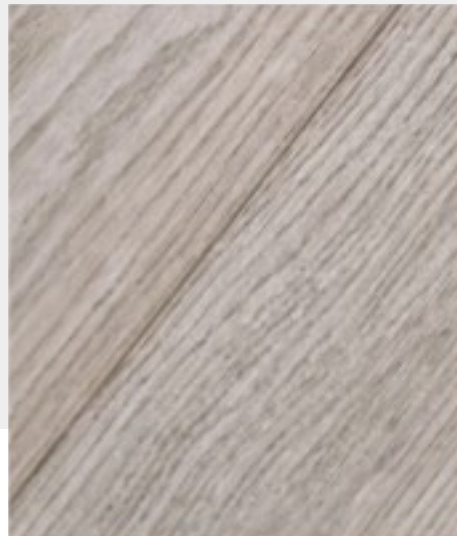
Rovere  
spazzolato,  
effetto trama,  
verniciato a colore  
*Chêne brossé, effet texturé,  
peint en couleur*



item  
BKLEACH

*Oak,  
deep brushed  
lacquered color*

Rovere  
spazzolato profondo,  
verniciato a colore  
*Chêne brossé profond, peint  
en couleur*



item  
VETN

*Oak,  
deep brushed, with limed  
effect, lacquered*

Rovere,  
spazzolato profondo,  
eff. decapato,  
verniciato a colore  
*Chêne, brossé, effet décapé,  
peint en couleur*

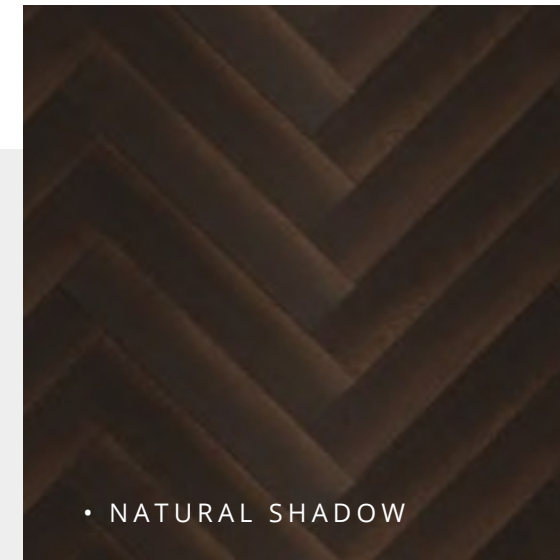
# SPECIALS

*A contemporary look but interpreted in a geometric composition with a classical matrix. A "chiaroscuro" effect of immediate plastic perception, thanks to the play of light and shadow that create a three-dimensional shading.*

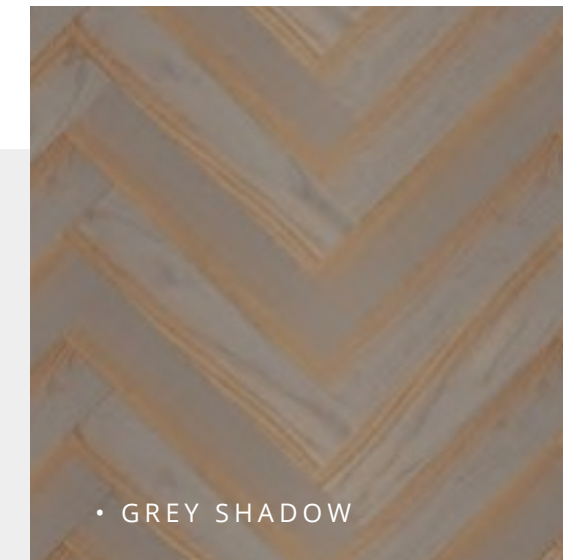
Un look contemporaneo ma interpretato in una composizione geometrica di matrice classica. Un effetto chiaroscurale di immediata percezione plastica, grazie al gioco di luci e ombre che creano una ombreggiatura tridimensionale.

Un look contemporain interprété dans une composition géométrique avec une matrice classique. Un effet clair-obscur de perception plastique immédiate, grâce au jeu d'ombre et de lumière qui crée un ombrage tridimensionnel.

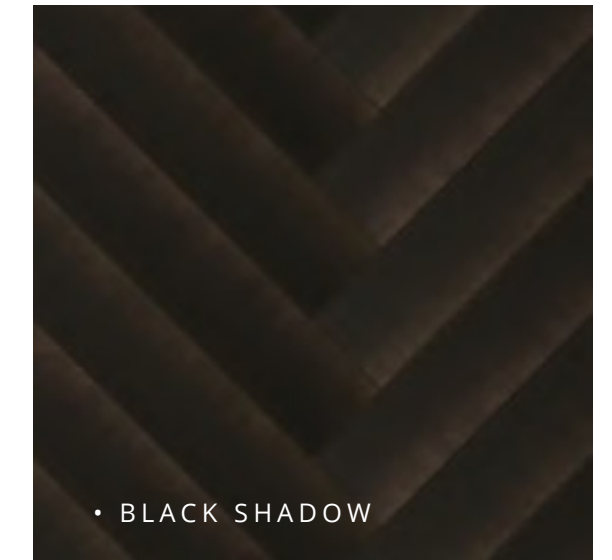
*Colors and tonalities of the images are considered as merely indicative.  
I colori e le tonalità delle immagini sono puramente indicativi.  
Les couleurs et les nuances des photos sont purement indicatives.*



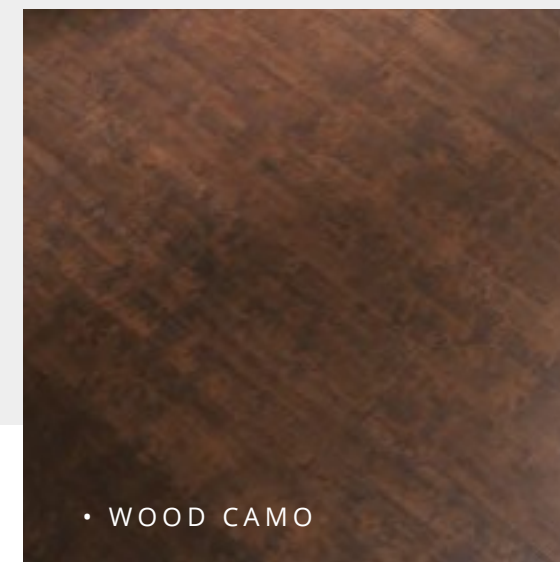
• NATURAL SHADOW



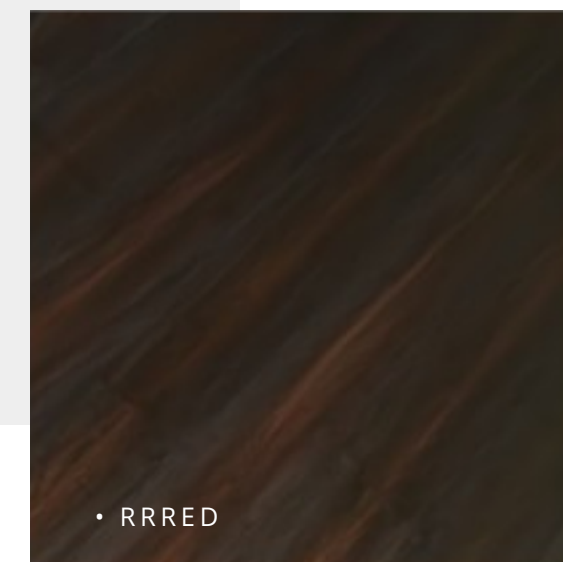
• GREY SHADOW



• BLACK SHADOW



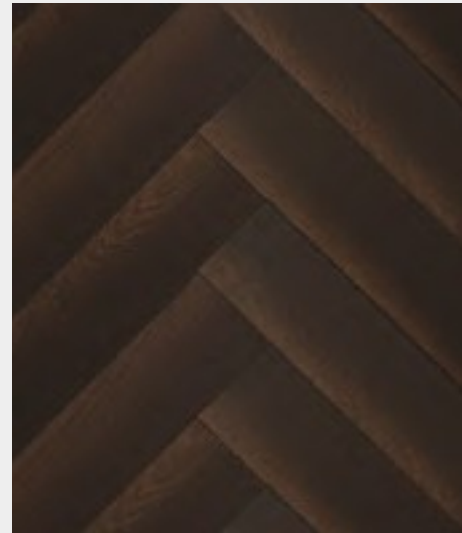
• WOOD CAMO



• RRRED

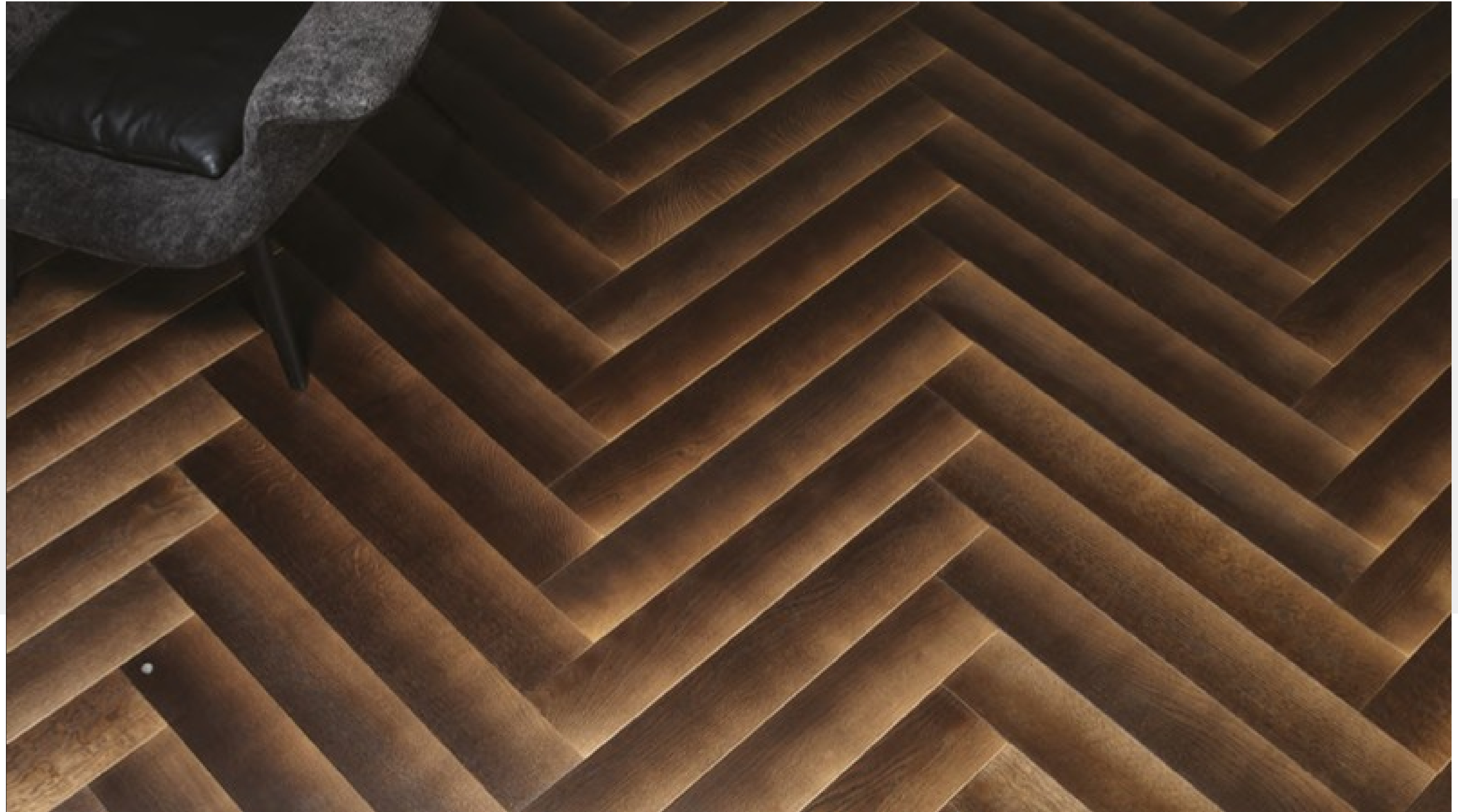


• CUT OFF



*item* NATURAL SHADOW

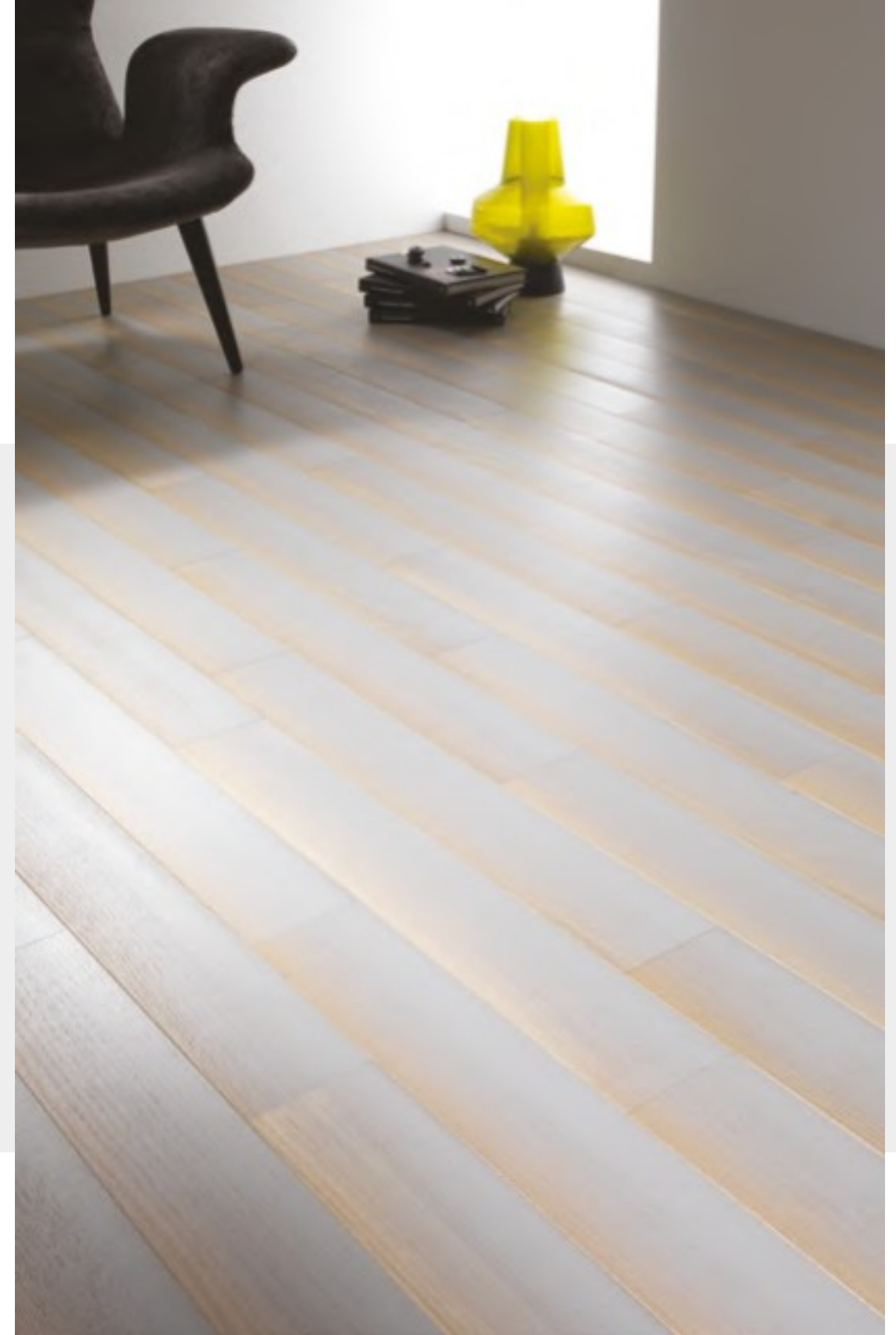
*Oak  
brushed surface,  
lacquered  
Rovere  
verniciato  
spazzolato  
Chêne brossé peint*

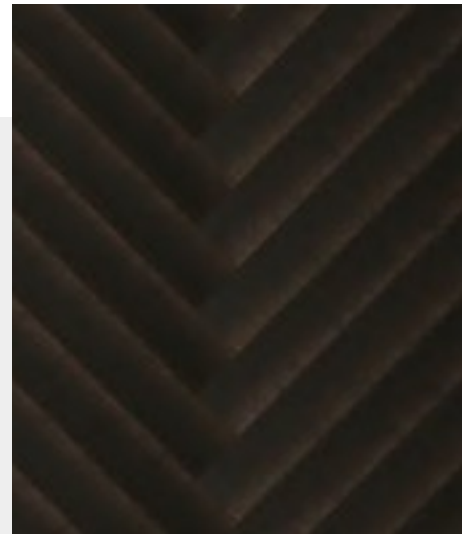




*item* GREY SHADOW

*Oak  
brushed surface,  
lacquered  
Rovere verniciato  
spazzolato  
Chêne brossé peint*



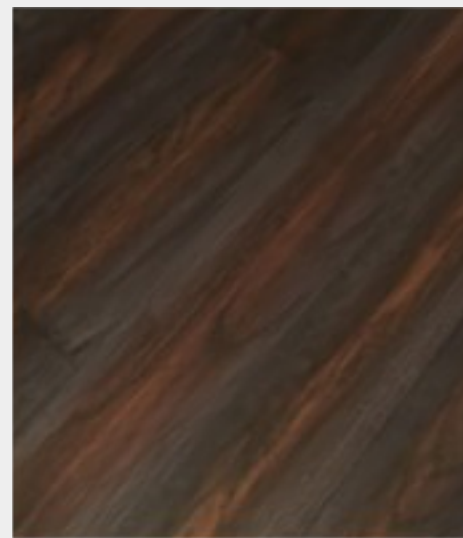
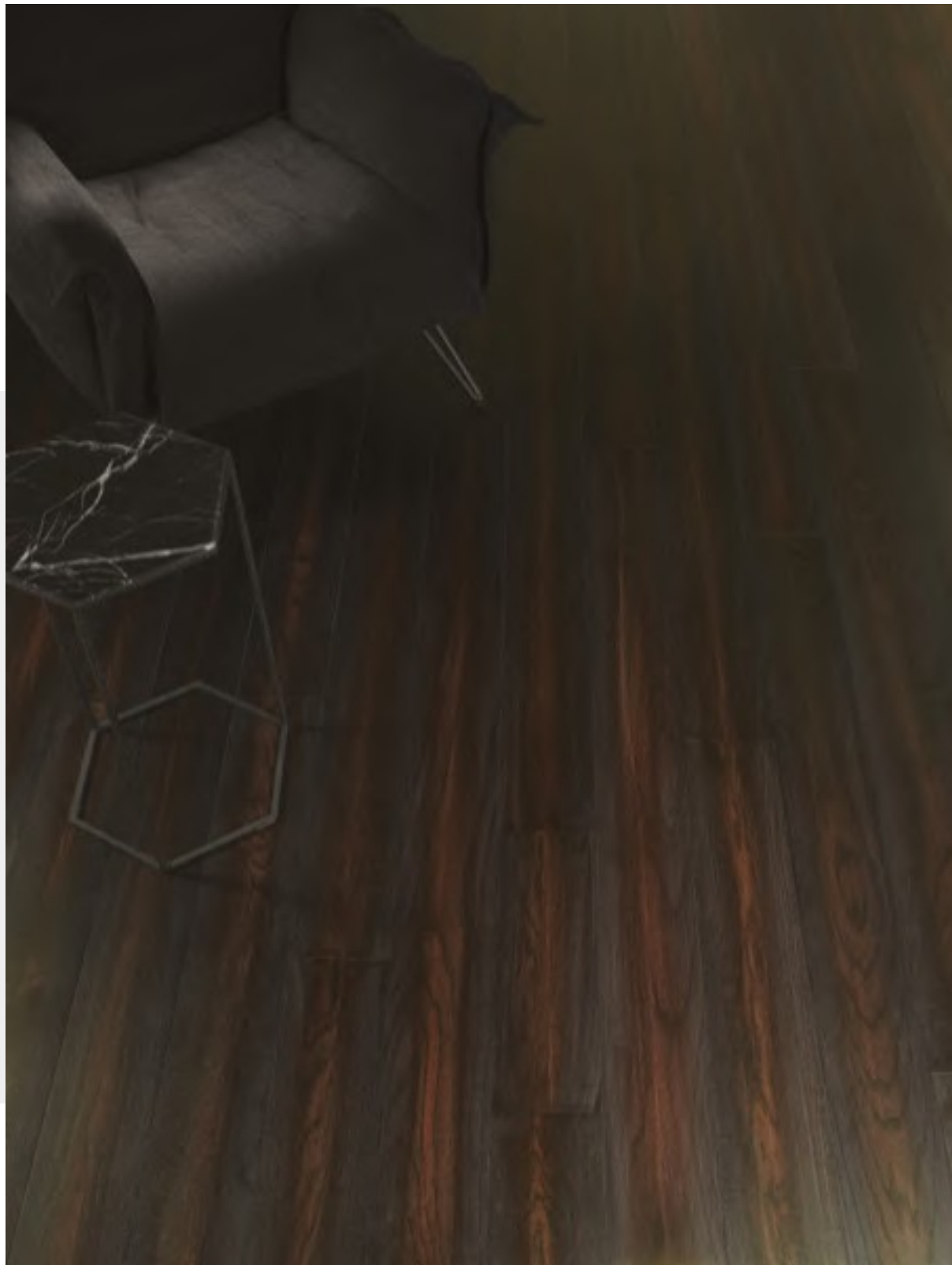


62

*item*  
**BLACK SHADOW**  
*Oak*  
*brushed surface,  
lacquered*  
Rovere verniciato  
spazzolato  
Chêne brossé peint

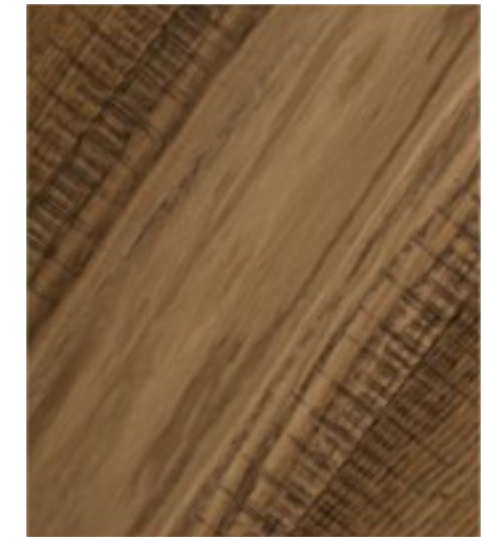


63



*item*  
RRRED

*Oak*  
*smooth surface, lacquered*  
*Rovere*  
*verniciato liscio*  
*Chêne peint lisse*



*item*  
CUT OFF

*Oak*  
*brushed, sawn + limed effect,*  
*stained, lacquered*  
*Rovere*  
*leggermente spazzolato, eff.*  
*sega, verniciato*  
*Chêne légèrement brossé,*  
*effet scié, verni*

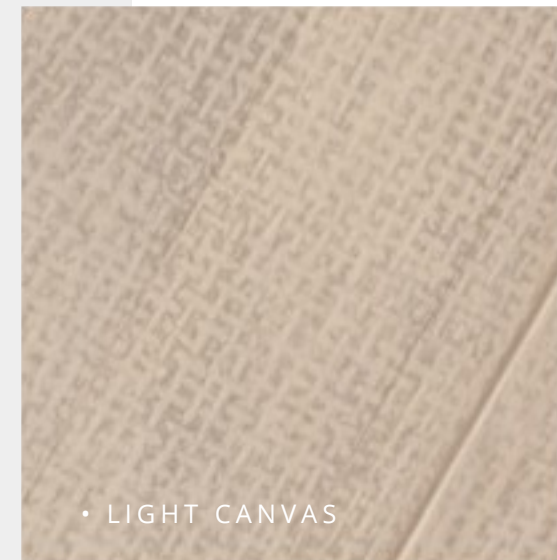


# TREATED CANVAS

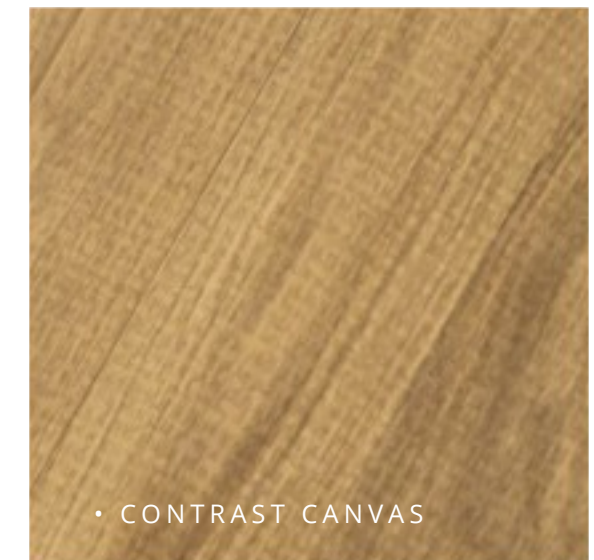
*We treat wood like a fabric. With the application of special dyes and treatments, evocative prints and special textures the wooden floor turn into a soft and transformable surface with an outstanding metamorphosis. Creating a customized environment, friendly with the inhabitant's experience.*

Come un tessuto, il legno diventa una superficie da trasformare. Ed è grazie a speciali tinture e trattamenti, suggestive stampe e texture uniche che il pavimento in legno si trasforma, stupefacente metamorfosi, creando un ambiente personalizzato a misura del vissuto di chi lo abita.

Comme un tissu, le bois devient une surface à transformer. Et c'est grâce à des teintures et des traitements spéciaux, des imprimés évocateurs et des textures uniques, que le sol en bois se transforme, se métamorphose étonnamment, créant une ambiance personnalisée, adaptée à l'expérience de son habitant.



• LIGHT CANVAS

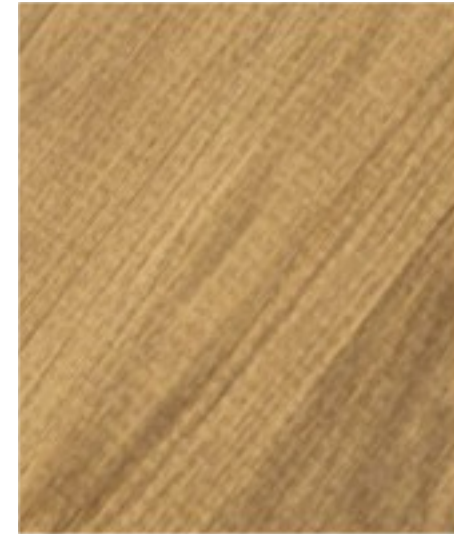


• CONTRAST CANVAS

*Colors and tonalities of the images are considered as merely indicative.  
I colori e le tonalità delle immagini sono puramente indicativi.  
Les couleurs et les nuances des photos sont purement indicatives.*



item  
60  
LIGHT CANVAS  
Oak  
brushed,  
lacquered+digital print  
Rovere  
spazzolato, verniciato  
+stampa digitale  
Chêne brossé, verni  
+ impression numérique



item  
61  
CONTRAST CANVAS  
brushed, texture effect,  
stained, lacquered  
Rovere  
spazzolato, eff. trama.  
verniciato a colore  
Chêne brossé, effet  
texturé, peint en couleur



# TECHNICAL FEATURES

## INFORMAZIONI TECNICHE

# INFORMATIONS TECHNIQUES

### 2 LAYERS PRE-FINISHED 2 STRATI PREFINITO 2 PLIS PRÉFINIS

It consists of a hardwood top layer and a supporting bottom birch plywood multilayer made of a very particular structure with cross layers which guarantees maximum stability to this products.

Composto da uno strato superiore di legno nobile e da uno strato di supporto inferiore in multistrato di betulla costituita da una particolare struttura a strati incrociati che garantiscono la massima stabilità di questo prodotto.

Composé d'une couche supérieure en bois noble et d'une couche inférieure de support en contreplaqué de bouleau, il présente une structure spéciale en couches croisées qui garantit la stabilité maximale de ce produit.

### 3 LAYERS PRE-FINISHED 3 STRATI PREFINITO PRÉFINI 3 COUCHES

Composed by a top layer of 4mm of noble wood, of a 8 mm Fir cross middle layer, running in the opposite direction of the top layer grain, granting an appropriate structural flexibility and a 2 mm fir-wood counterbalancing layer in order to counterbalance the wide planks and give them the maximum structural stability.

Composto da uno strato superiore di legno nobile di 4 mm di spessore, da uno strato intermedio composto da listelli indipendenti di abete di 8 mm di spessore, disposti in senso trasversale rispetto all'andamento delle fibre dello strato nobile in modo da garantire la giusta flessibilità strutturale, e da una controbilanciatura in plancia di legno di abete di 2 mm a cui è demandato il compito di controbilanciare e garantire la massima stabilità delle tavole.

Il se compose d'une couche supérieure en bois noble de 4 mm d'épaisseur, d'une couche intermédiaire de lames indépendantes en épicea de 8 mm d'épaisseur, disposées transversalement au parcours des fibres de la couche noble afin de garantir une flexibilité structurelle correcte, et d'un contrepoids en épicea de 2 mm d'épaisseur, chargé de contrebalancer et de garantir la stabilité maximale des lames.

### PATTERN FLOORS QUADROTTE SOLS À MOTIFS

500x500 mm laser cut consists of a 4 mm oak hardwood top layer varnished with a water based, acrylic or uv acrylic lacquer and a 9 mm birch plywood made of a very particular structure with 7 cross layer which guarantee maximum stability to this product. Bevelled, with tongue and groove joint.

Quadrotte 500x500mm è una quadrotta a taglio laser composta da 2 strati che si caratterizza per la seguente composizione: uno strato superiore di rovere pregiato di 4 mm di spessore, finito in superficie con vernice acrilica, acrilica UV o all'acqua. Uno strato di supporto inferiore in multistrato di betulla di 9 mm di spessore costituita da una particolare struttura di 7 strati incrociati che garantiscono la massima stabilità di questo prodotto. Bisellato, con incastro maschio-femmina.

« Quadrotta » 500x500mm, à savoir des carreaux en bois à clous découpés au laser et composés de 2 couches avec la composition suivante : une couche supérieure en chêne fin de 4 mm d'épaisseur, finie en surface avec un vernis acrylique, acrylique UV ou à base d'eau. Une couche inférieure de contreplaqué de bouleau de 9 mm d'épaisseur, constituée d'une structure spéciale de 7 couches croisées qui garantissent la stabilité maximale de ce produit. Joint biseauté à rainure et languette.

### IWOOD VENEER OAK IWOOD TRANCIATO DI ROVERE PLACAGE CHÊNE IWOOD

The planks are made of a 0.6 mm veneer wood of the finest oak, a cross-laminated birch plywood backing and a counterbalancing part made of veneer wood (0.6 mm) that guarantees maximum stability. High-precision joints guarantee flatness.

Le tavole sono costituite da un tranciato di 0,6 decimi in legno nobile di primissima scelta di rovere, un supporto in betulla multistrato a strati incrociati e da una parte controbilanciante in legno (0,6 decimi) che garantisce la massima stabilità. Incastri ad alta precisione garantiscono la planarità.

Les planches sont composées d'un placage de chêne de premier choix de 0,6 dixième d'épaisseur, d'un support en contreplaqué de bouleau à couches croisées et d'un contrepoids en bois de 0,6 dixième d'épaisseur pour une stabilité maximale. Des joints de haute précision garantissent la planéité.

TECHNICAL FEATURES



TARTAN WOOD GREEN



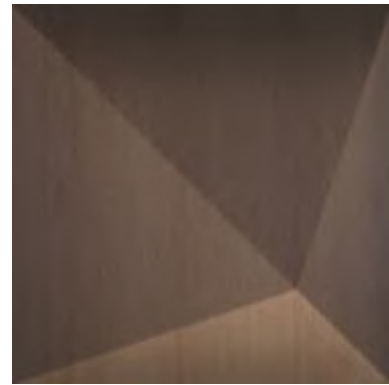
TARTAN WOOD GRAY



TARTAN WOOD NATURAL



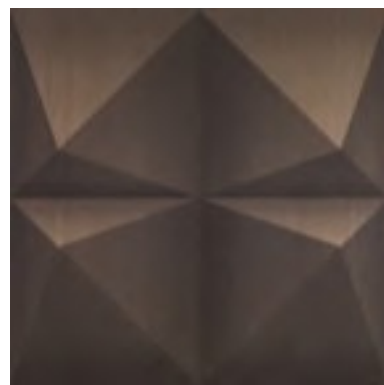
TARTAN WOOD BROWN



KALEIDOSTONE



BLACK SHADOW



BLACK STAR

LARGHEZZA  
WIDTH  
LARGEUR  
600 mm

LUNGHEZZA  
LENGHT  
LONGUEUR  
600 mm

SPESSORE  
THICKNESS  
ÉPAISSEUR  
10,2 mm  
(0,6+9+0,6)

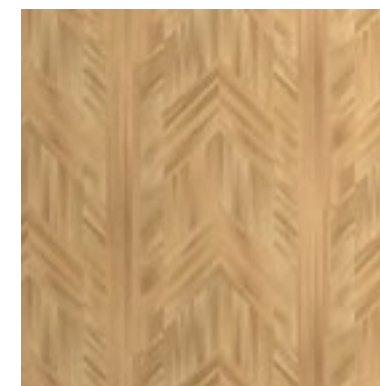
CLASSE  
CLASS  
CLASSE  
EXTRA ●

COLORE\*  
COLOR  
COULEUR  
rovere + stampa digitale  
oak + digital print  
chêne + impressions numériques

€/m<sup>2</sup>



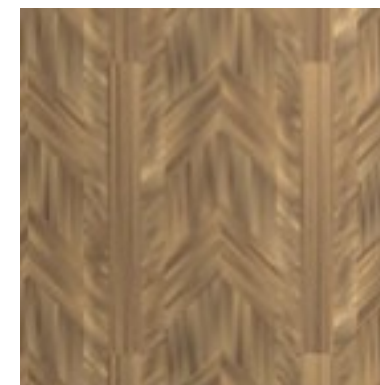
TECHNICAL FEATURES



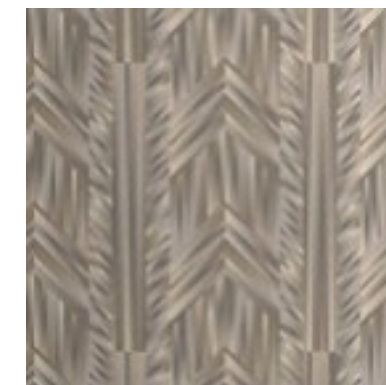
NEW CHEVRON NEUTRAL



NEW CHEVRON EBONY



NEW CHEVRON WALNUT



NEW CHEVRON GRAY WASH

LARGHEZZA  
WIDTH  
LARGEUR  
220 mm  
B - D: 150 mm  
E - F: 357,5 mm  
A - C: 357,5 mm

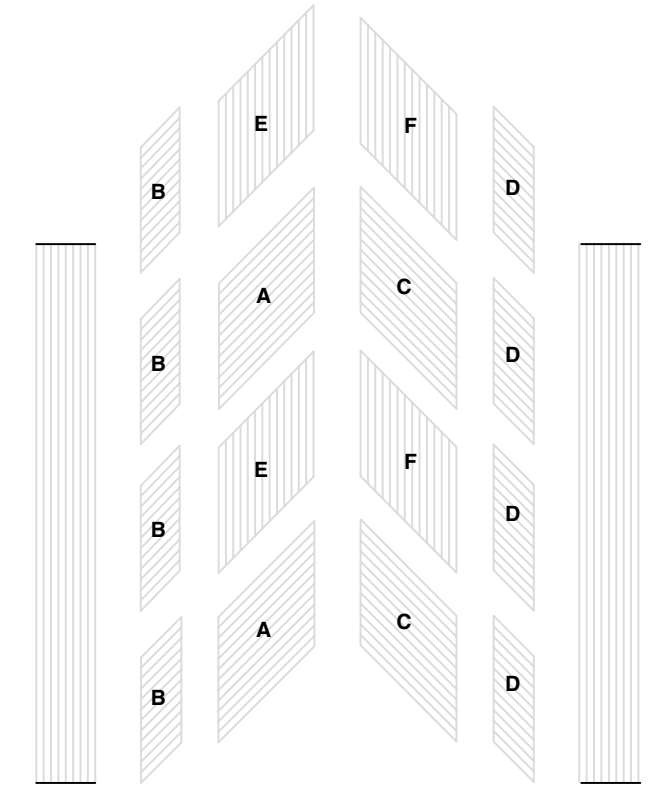
LUNGHEZZA  
LENGHT  
LONGUEUR  
2000 mm  
B - D: 616,69 mm  
E - F: 824,19 mm  
A - C: 357,5 mm

SPESSORE  
THICKNESS  
ÉPAISSEUR  
10,2 mm  
(0,6+9+0,6)

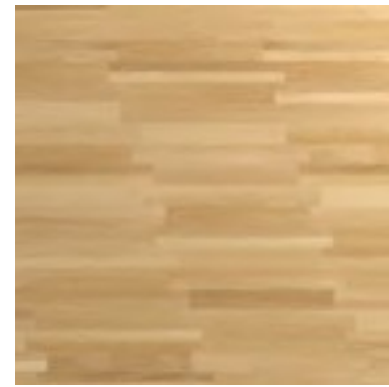
CLASSE  
CLASS  
CLASSE  
EXTRA ●

COLORE\*  
COLOR  
COULEUR  
rovere + stampa digitale  
oak + digital print  
chêne + impressions numériques

€/m<sup>2</sup>



TECHNICAL FEATURES



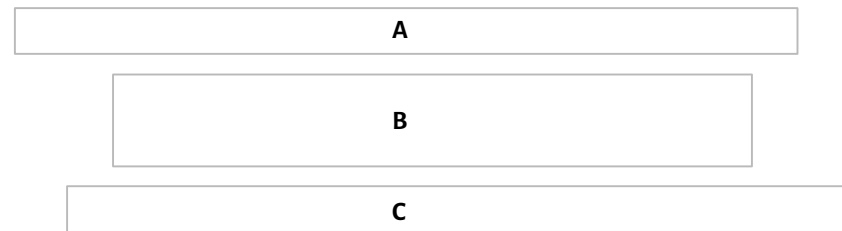
D-PLANK  
OAK WASH



D-PLANK  
BROWN WASH



D-PLANK  
GREY WASH



**LARGHEZZA**  
**WIDTH**  
**LARGEUR**  
A: 70 mm  
B: 140 mm  
C: 70 mm

**LUNGHEZZA**  
**LENGHT**  
**LONGUEUR**  
A: 1200 mm  
B: 980 mm  
C: 1200 mm

**SPESSORE**  
**THICKNESS**  
**ÉPAISSEUR**  
10,2 mm  
(0,6+9+0,6)

**CLASSE**  
**CLASS**  
**CLASSE**  
EXTRA ●

**COLORE\***  
**COLOR**  
**COULEUR**  
rovere + stampa digitale  
oak + digital print  
chêne + impressions numériques

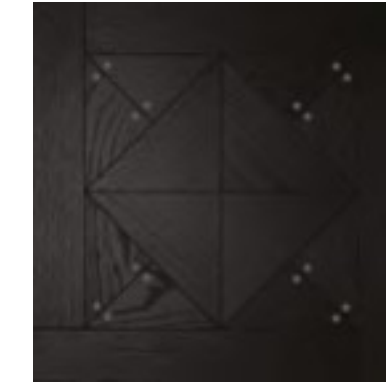
€/m<sup>2</sup>



TECHNICAL FEATURES



STUD OAK



STUD BLACK



STUD GREY

**2 STRATI**  
**2 LAYERS**  
**2 COUCHES**

500x500mm  
Spessore: 13 mm

500x500 mm  
Thickness: 13 mm

500x500 mm  
Épaisseur: 13 mm



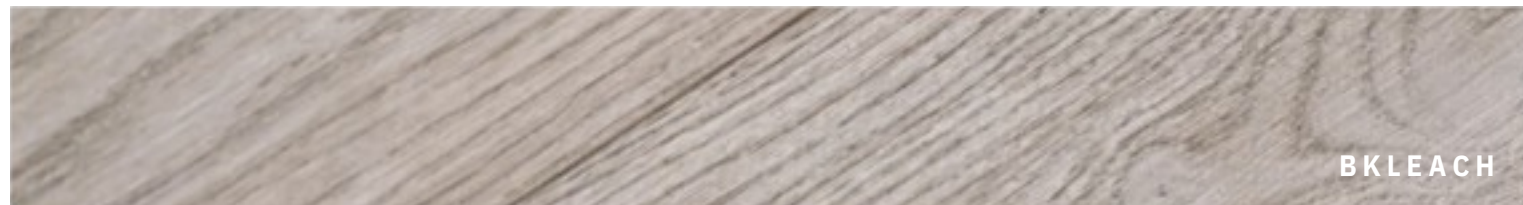
Spazzolato profondo, verniciato a colore

*Chêne, brossé en profondeur, verni, couleur couvrant*  
*Deep brushed, color cover, lacquered*

▲ **Natura**



URBAN GRAY



BKLEACH

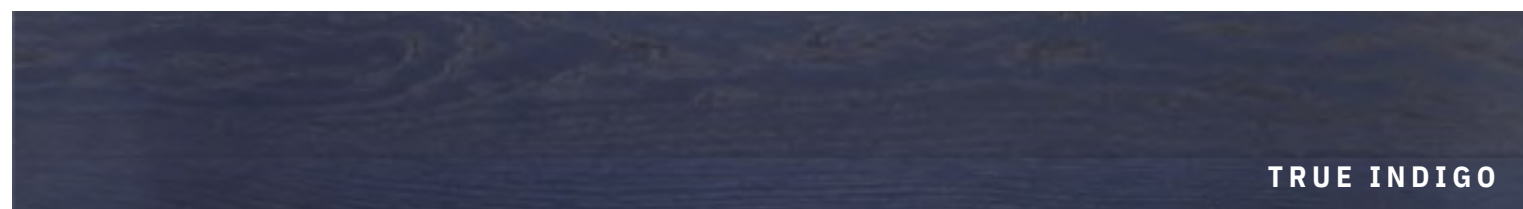


DUOTONE

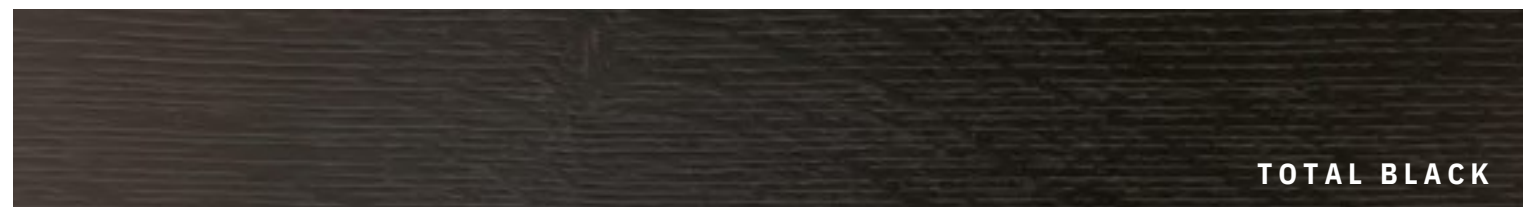


VEIN

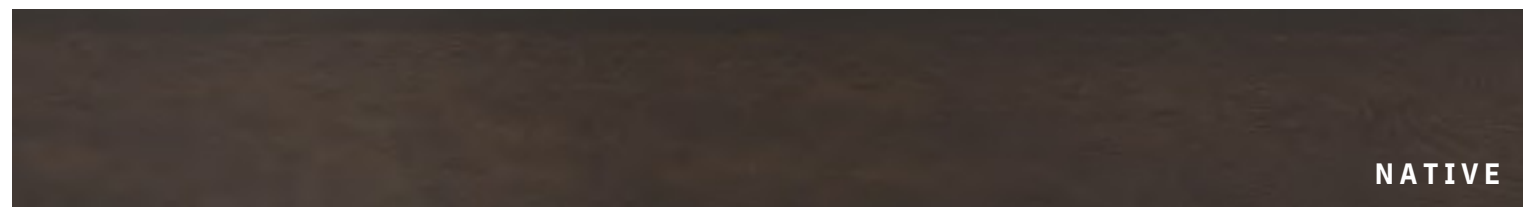
TRUE COLORS



TRUE INDIGO



TOTAL BLACK



NATIVE

**2 STRATI MAXI - 9,5 mm**  
**2 LAYERS MAXI**  
**2 COUCHES MAXI**



Larghezza: 110 / 118 / 120 / 125 mm  
Lunghezza varie: 600 > 1300 mm  
Spessore: **9,5 mm**

Width: 110 / 118 / 120 / 125 mm  
Random Lengths: 600 > 1300 mm  
Thickness: **9,5 mm**

Largeur: 110 / 118 / 120 / 125 mm  
Longueurs diverses: 600 > 1300 mm  
Epaisseur: **9,5 mm**

no posa flottante  
floating installation not allowed  
pose flottante n'est pas Admise

**2 STRATI TAVOLE - 9,5 mm**  
**2 LAYERS WIDE PLANKS**  
**2 COUCHES**



Larghezza: 140 mm  
Lunghezza varie: 600 > 1500 mm  
Spessore: **9,5 mm**

Width: 140 mm  
Random Lengths: 600 > 1500 mm  
Thickness: **9,5 mm**

Largeur: 140 mm  
Longueurs diverses: 600 > 1500 mm  
Epaisseur: **9,5 mm**

no posa flottante  
floating installation not allowed  
pose flottante n'est pas Admise

**2 STRATI MAXI - 13mm**  
**2 LAYERS MAXI**  
**2 COUCHES MAXI**



Larghezza: 110 / 118 / 120 / 125 mm  
Lunghezza varie: 600 > 1300 mm  
Spessore: **13 mm**

Width: 110 / 118 / 120 / 125 mm  
Random Lengths: 600 > 1300 mm  
Thickness: **13 mm**

Largeur: 110 / 118 / 120 / 125 mm  
Longueurs diverses: 600 > 1300 mm  
mm  
Epaisseur: **13 mm**

no posa flottante  
floating installation not allowed  
pose flottante n'est pas Admise

**2 STRATI TAVOLE - 13 mm**  
**2 LAYERS WIDE PLANKS**  
**2 COUCHES**



Larghezza varie: **130 > 220 mm**  
oppure,  
Larghezza fissa: **180 mm**  
Lunghezza varie: 1000 > 2500 mm  
Spessore: **13 mm**

Random Widths: **130 > 220 mm** or  
Single Width: **180 mm**  
Random Lengths: 1000 > 2500 mm  
Thickness: **13 mm**

Largeurs Diverses: **130 > 220 mm** ou  
Largeur unique: **180mm**  
Longueurs diverses: 1000 > 2500 mm  
Epaisseur: **13 mm**

**2 STRATI TAVOLE - 13 mm**  
**2 LAYERS WIDE PLANKS**  
**2 COUCHES**

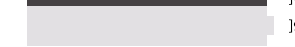


Larghezza fissa: **140 mm**  
Lunghezza varie: 1000 > 2500 mm  
Spessore: **13 mm**

Single Width: **140 mm**  
Random Lengths: 1000 > 2500 mm  
Thickness: **13 mm**

Largeur unique: **140mm**  
Longueurs diverses: 1000 > 2500 mm  
Epaisseur: **13 mm**

**2 STRATI TAVOLE - 13 mm**  
**2 LAYERS WIDE PLANKS**  
**2 COUCHES**



Larghezza fissa: **220 mm**  
Lunghezza varie: 1000 > 2500 mm  
Spessore: **13 mm**

Single Width: **220 mm**  
Random Lengths: 1000 > 2500 mm  
Thickness: **13 mm**

Largeur unique: **220mm**  
Longueurs diverses: 1000 > 2500 mm  
mm  
Epaisseur: **13 mm**

**2 STRATI TAVOLE - 13mm**  
**2 LAYERS WIDE PLANKS**  
**2 COUCHES**



Larghezza: 280/300 mm  
Lunghezza varie: 1200 > 2500 mm  
Spessore: **13 mm**

Width: 300 mm  
Random Lengths: 1200 > 2500 mm  
Thickness: **13 mm**

Largeur: 300 mm  
Longueurs diverses: 1200 > 2500 mm  
Epaisseur: **13 mm**

no posa flottante  
floating installation not allowed  
pose flottante n'est pas Admise



TREATED CANVAS



LIGHT CANVAS



CONTRAST CANVAS

**2 STRATI MAXI - 9,5 mm**  
**2 LAYERS MAXI**  
**2 COUCHES MAXI**



Larghezza: 110 / 118 / 120 / 125 mm  
Lunghezze varie: 600 > 1300 mm  
Spessore: **9,5 mm**

Width: 110 / 118 / 120 / 125 mm  
Random Lengths: 600 > 1300 mm  
Thickness: **9,5 mm**

Largeur: 110 / 118 / 120 / 125 mm  
Longueurs diverses: 600 > 1300 mm  
Epaisseur: **9,5 mm**

no posa flottante  
floating installation not allowed  
pose flottante n'est pas Admise

**2 STRATI TAVOLE - 9,5 mm**  
**2 LAYERS WIDE PLANKS**  
**2 COUCHES**



Larghezza: 140 mm  
Lunghezze varie: 600 > 1500 mm  
Spessore: **9,5 mm**

Width: 140 mm  
Random Lengths: 600 > 1500 mm  
Thickness: **9,5 mm**

Largeur: 140 mm  
Longueurs diverses: 600 > 1500 mm  
Epaisseur: **9,5 mm**

no posa flottante  
floating installation not allowed  
pose flottante n'est pas Admise

**2 STRATI MAXI - 13mm**  
**2 LAYERS MAXI**  
**2 COUCHES MAXI**



Larghezza: 110 / 118 / 120 / 125 mm  
Lunghezze varie: 600 > 1300 mm  
Spessore: **13 mm**

Width: 110 / 118 / 120 / 125 mm  
Random Lengths: 600 > 1300 mm  
Thickness: **13 mm**

Largeur: 110 / 118 / 120 / 125 mm  
Longueurs diverses: 600 > 1300 mm  
mm  
Epaisseur: **13 mm**

no posa flottante  
floating installation not allowed  
pose flottante n'est pas Admise

**2 STRATI TAVOLE - 13 mm**  
**2 LAYERS WIDE PLANKS**  
**2 COUCHES**



Larghezza varie: **130 > 220 mm**  
**oppure,**  
**Larghezza fissa: 180 mm**  
Lunghezze varie: 1000 > 2500 mm  
Spessore: **13 mm**

**Random Widths: 130 > 220 mm or**  
**Single Width: 180 mm**  
Random Lengths: 1000 > 2500 mm  
Thickness: **13 mm**

**Largeurs Diverses: 130 > 220 mm ou**  
**Largeur unique: 180mm**  
Longueurs diverses: 1000 > 2500 mm  
Epaisseur: **13 mm**

**2 STRATI TAVOLE - 13 mm**  
**2 LAYERS WIDE PLANKS**  
**2 COUCHES**

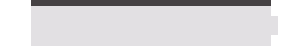


**Larghezza fissa: 140 mm**  
Lunghezze varie: 1000 > 2500 mm  
Spessore: **13 mm**

**Single Width: 140 mm**  
Random Lengths: 1000 > 2500 mm  
Thickness: **13 mm**

**Largeur unique: 140mm**  
Longueurs diverses: 1000 > 2500 mm  
Epaisseur: **13 mm**

**2 STRATI TAVOLE - 13 mm**  
**2 LAYERS WIDE PLANKS**  
**2 COUCHES**



**Larghezza fissa: 220 mm**  
Lunghezze varie: 1000 > 2500 mm  
Spessore: **13 mm**

**Single Width: 220 mm**  
Random Lengths: 1000 > 2500 mm  
Thickness: **13 mm**

**Largeur unique: 220mm**  
Longueurs diverses: 1000 > 2500 mm  
mm  
Epaisseur: **13 mm**

**2 STRATI TAVOLE - 13mm**  
**2 LAYERS WIDE PLANKS**  
**2 COUCHES**



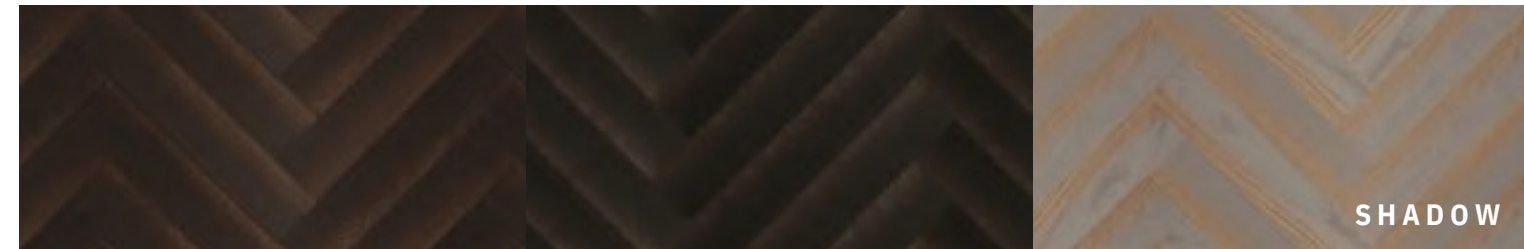
Larghezza: 280/300 mm  
Lunghezze varie: 1200 > 2500 mm  
Spessore: **13 mm**

Width: 300 mm  
Random Lengths: 1200 > 2500 mm  
Thickness: **13 mm**

Largeur: 300 mm  
Longueurs diverses: 1200 > 2500 mm  
Epaisseur: **13 mm**

no posa flottante  
floating installation not allowed  
pose flottante n'est pas Admise

SPECIALS



SHADOW



RRRED



CUT OFF





WITH



edition 2026 / edizione 2026 / édition 2026



**DIESEL LIVING WITH Elm Surfaces**

***RESEARCH / PASSION / EXPERIENCE / INNOVATION / CREATIVITY  
WOODEN FLOORS / TRANSFORMATION / FEELINGS / QUALITY  
INNOVATION / RESEARCH / CREATIVITY / TRANSFORMATION  
WOODEN FLOORS / TRANSFORMATION / QUALITY / INNOVATION  
RESEARCH / QUALITY / RESEARCH / INNOVATION / CREATIVITY  
QUALITY / INNOVATION / RESEARCH / CREATIVITY / TRANSFORMATION***

***[WWW.Elm Surfaces.NET](http://WWW.Elm Surfaces.NET) • DIESELLIVINGWITHElm Surfaces***