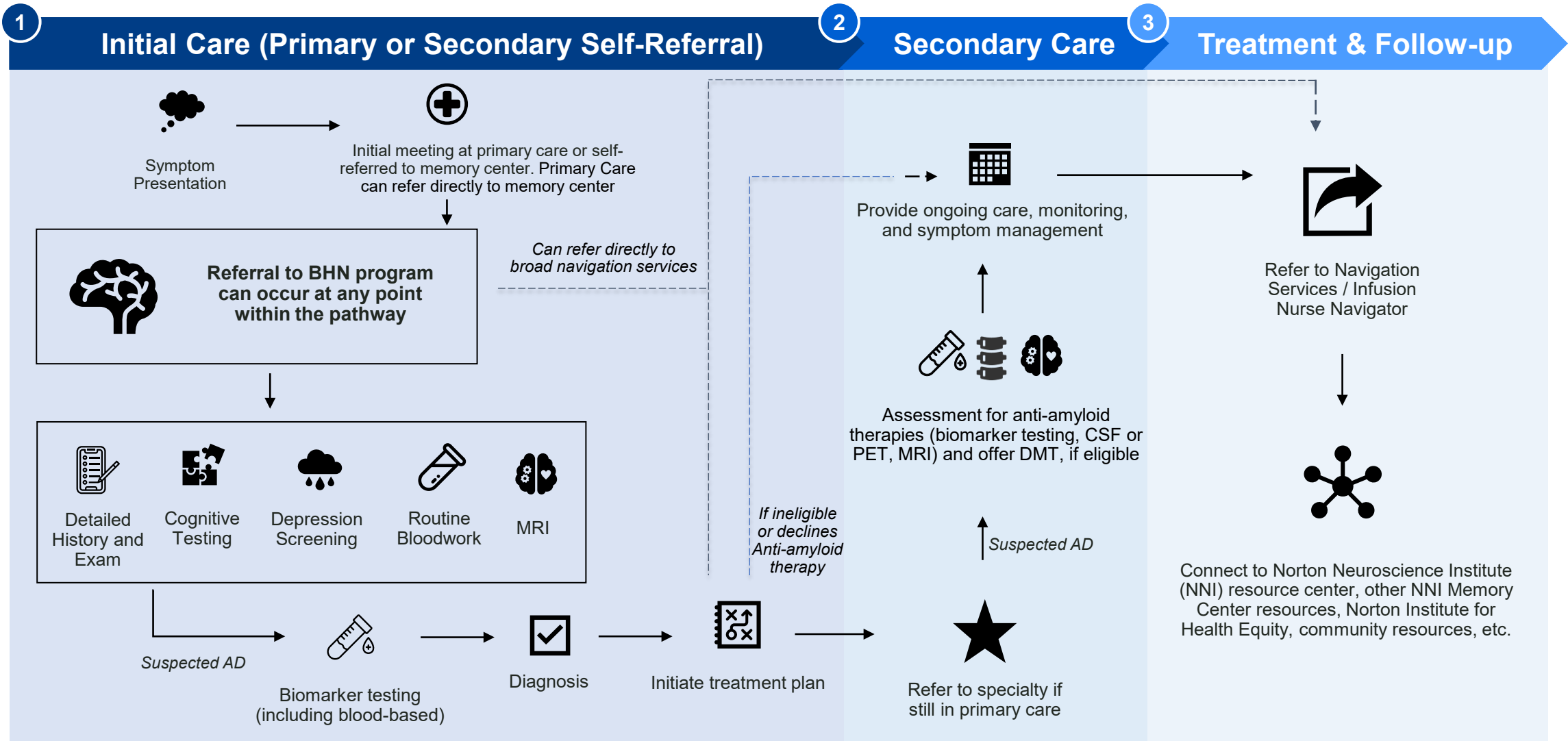


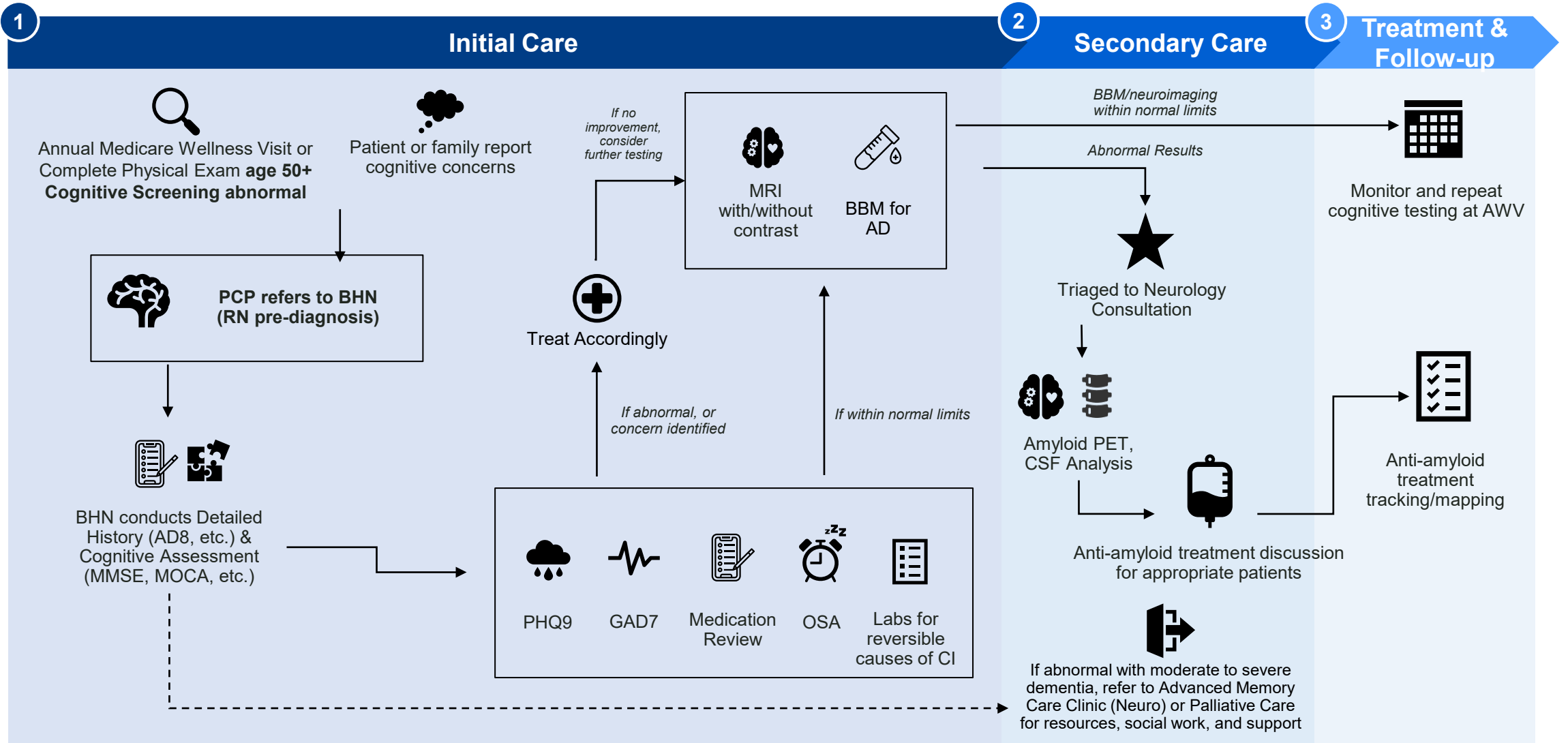
Brain Health Navigator (BHN) Model

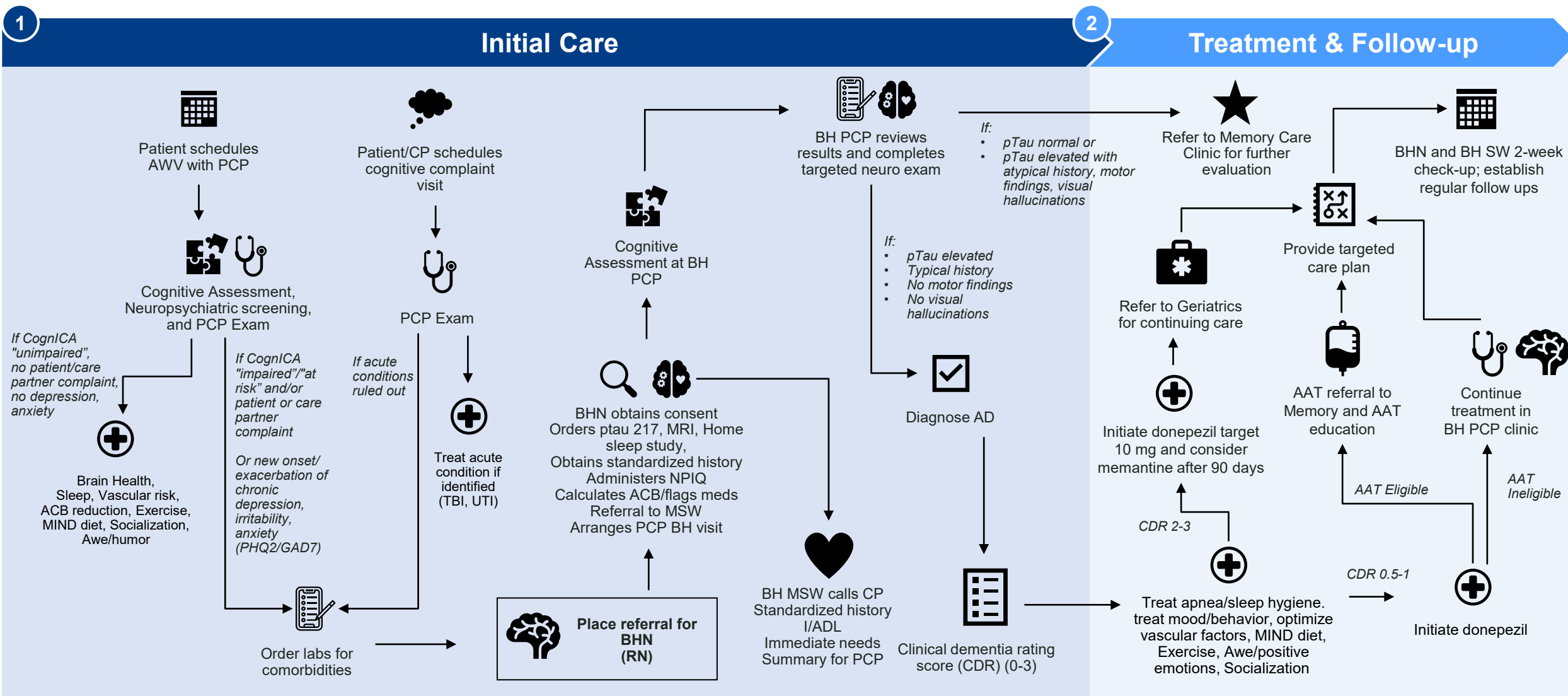
Workflow Examples

Instructions for use

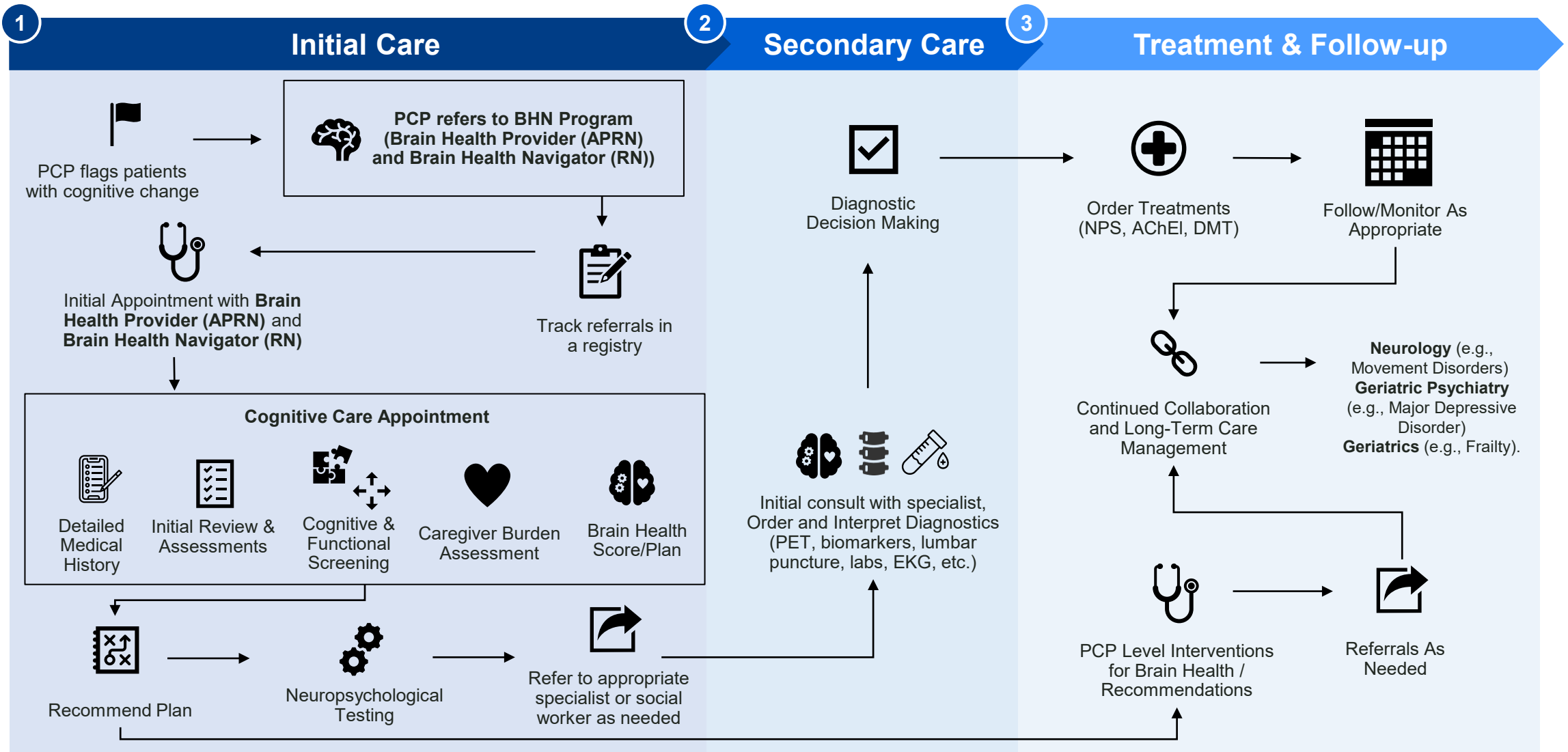
- This resource includes 6 examples of care pathways from the healthcare systems that were part of the Davos Alzheimer's Collaborative Brain Health Navigator program.
- These case studies were developed through real-world experience and continue to evolve as the practices develop and refine their care pathways.
- To create your own workflow, please see the Workflow Overview Template.



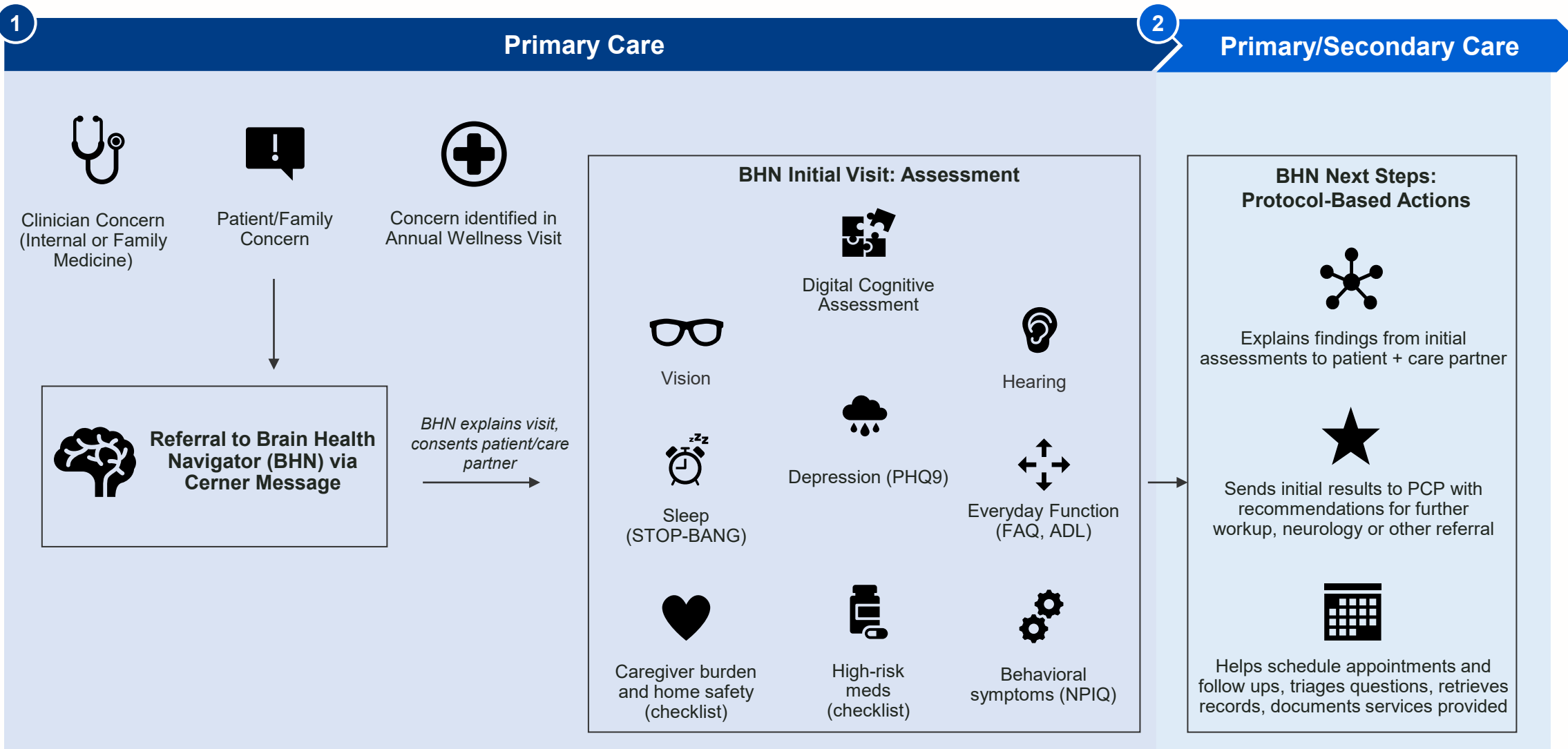




Dartmouth Health BHN Model Care Pathway

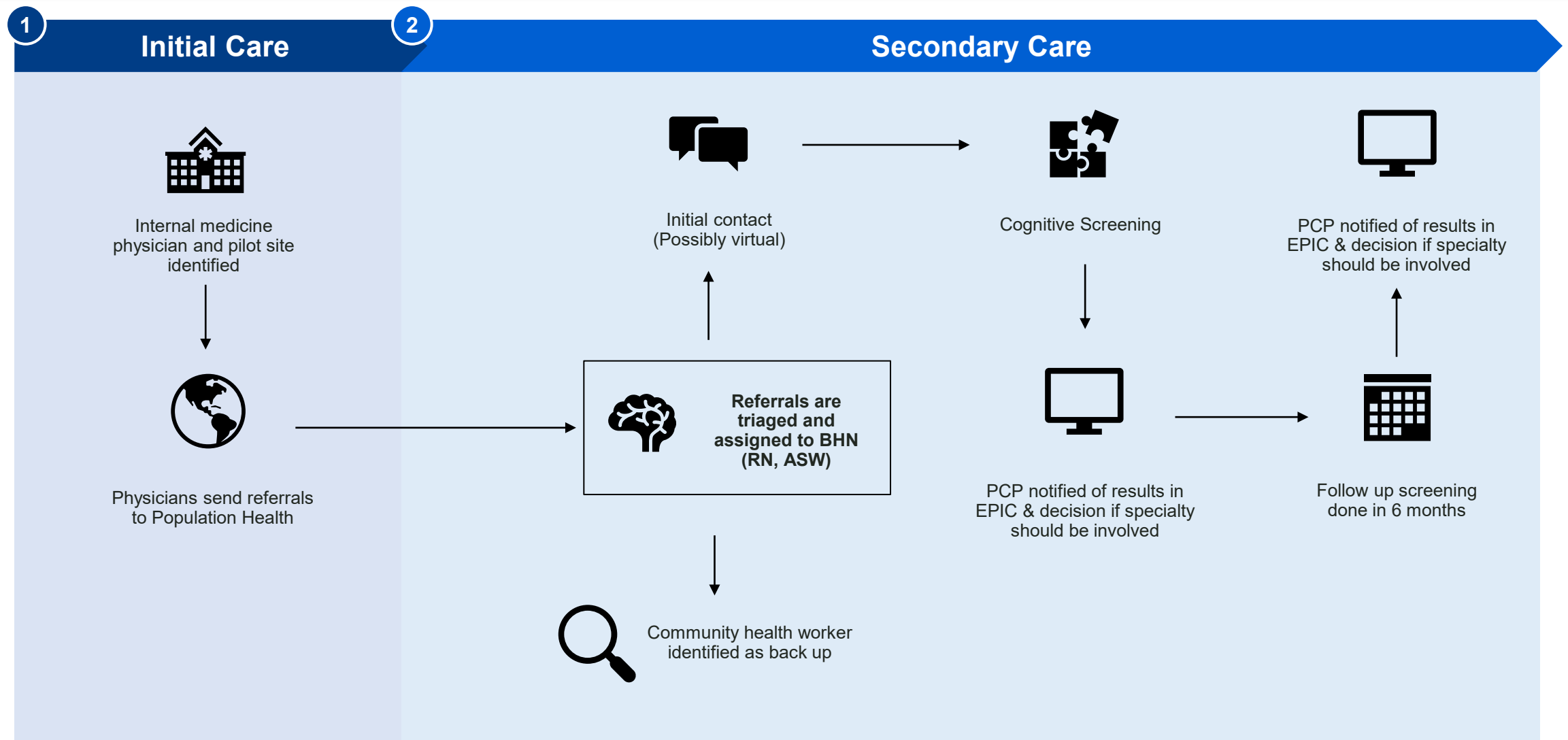


Keck Medicine of USC BHN Model Care Pathway





Sharp Rees-Stealy Medical Centers BHN Model Care Pathway



ASW= Associate Social Worker / Associate Clinical Social Worker, BHN= Brain Health Navigator, PCP= Primary Care Provider, RN= Registered Nurse



Healthcare System Model: BHN joins an existing department