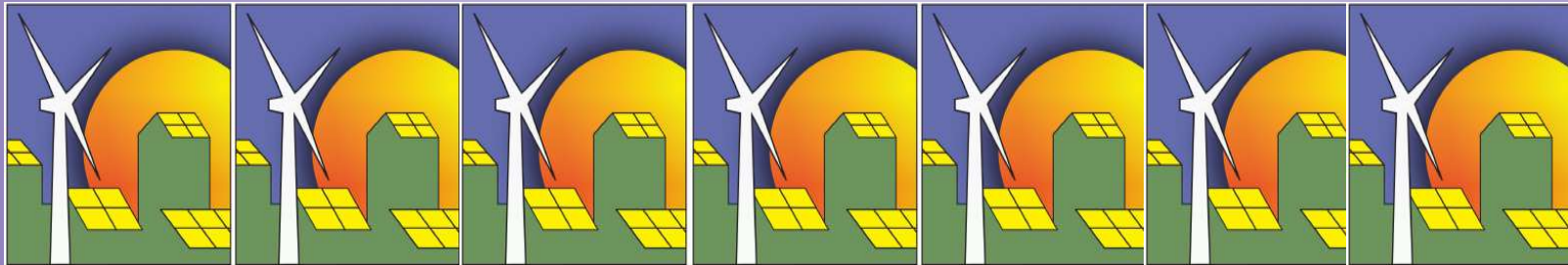
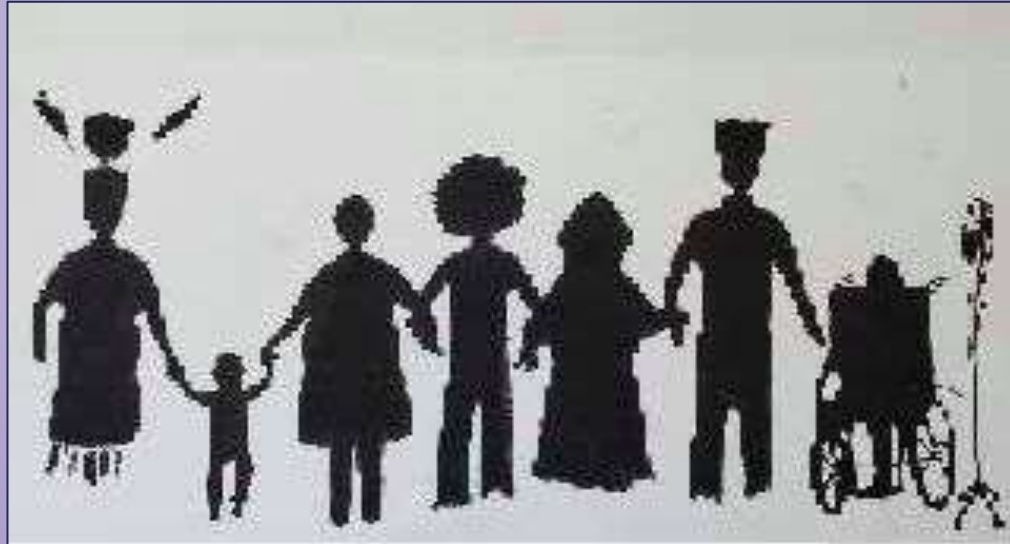


Community Energy for Community Driven Resilience



LOCAL
CLEAN
ENERGY
ALLIANCE

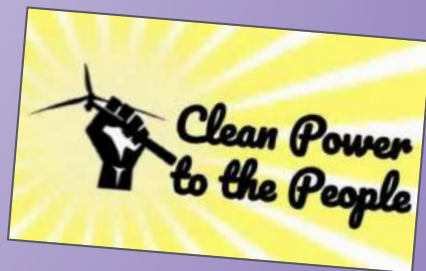
**Local Clean Energy Alliance organizes to win policies that create community benefits; affordability, clean energy jobs, new models, seed funding and community governance and so much more...
We work for clean energy solutions for communities that are left out of the clean energy economy.**



I SUPPORT COMMUNITY CHOICE ENERGY



www.localcleanenergy.org



What is Ava and how does it work?

- **“Community Choice” started with AB 117 of the California Assembly in 2002**
- **Allows cities and counties to establish a local agency to provide electricity, with an emphasis on clean energy**
- **Called “Community Choice Aggregators” = they buy electricity in bulk for their cities and counties**
- **Alameda County: Established Ava Community Energy in 2017**

The money and decision making is local and are governed by a Board of Directors made up of local elected officials.



Goals for our Community Choice energy program



- 1. Prioritize local clean energy resources**
- 2. Provide affordable & stable rates for electricity**
- 3. Provide more clean energy than CA's & PG&E's goals**
- 4. Create good family sustaining local jobs**
- 5. Local, Community Ownership & Control**
- 6. Improves Community Health & Safety**
- 7. Includes Community in Decision-Making Process**

Benefits of Localizing Energy Production:

Creating Energy Resilience!

Communities have the opportunity to produce/own their own energy.

Employment Opportunity!

Prioritizes local people to work green jobs or clean energy jobs

Reliable Electricity!

Have secure energy sources during disasters and just in everyday occurrences

Cleaner Environment!

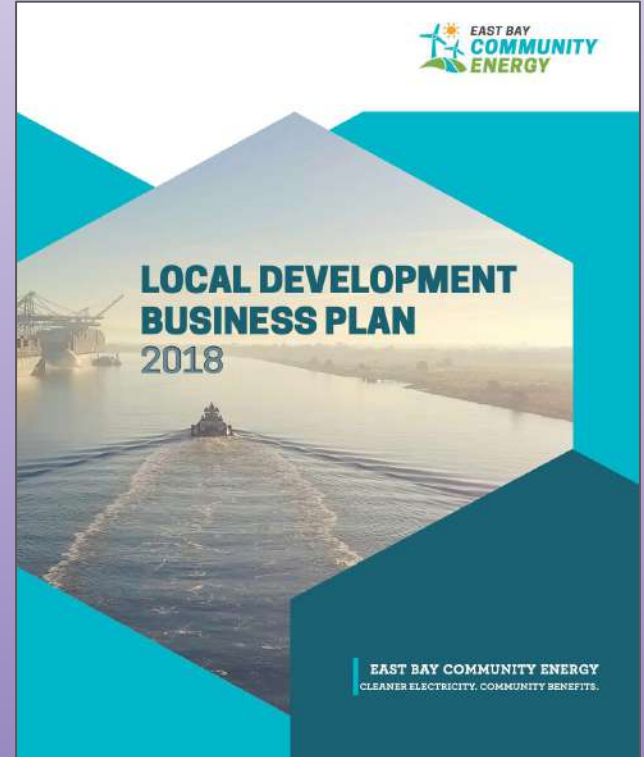
Opportunity for local communities to lower pollution levels and energy use.

A Roadmap for Community Investments

- **Local clean energy investments**

- Rooftop & Ground Mount
- Demand Reduction
- Energy Efficiency
- Fuel Switch from Gas to Electric
- Community Innovation Grant Funding
- + more

We're concerned that Ava Community Energy is moving away from its commitments to local community benefits & local control

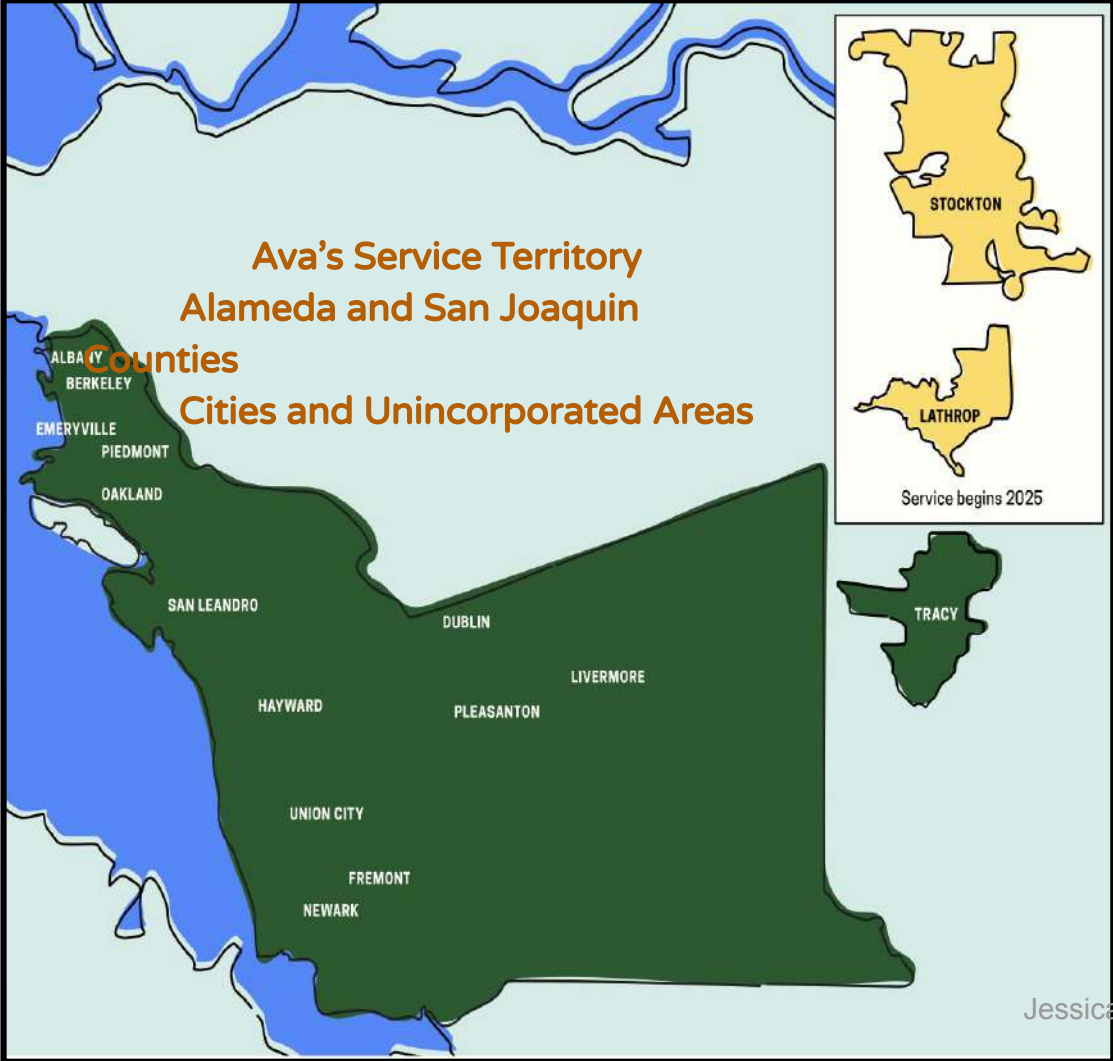




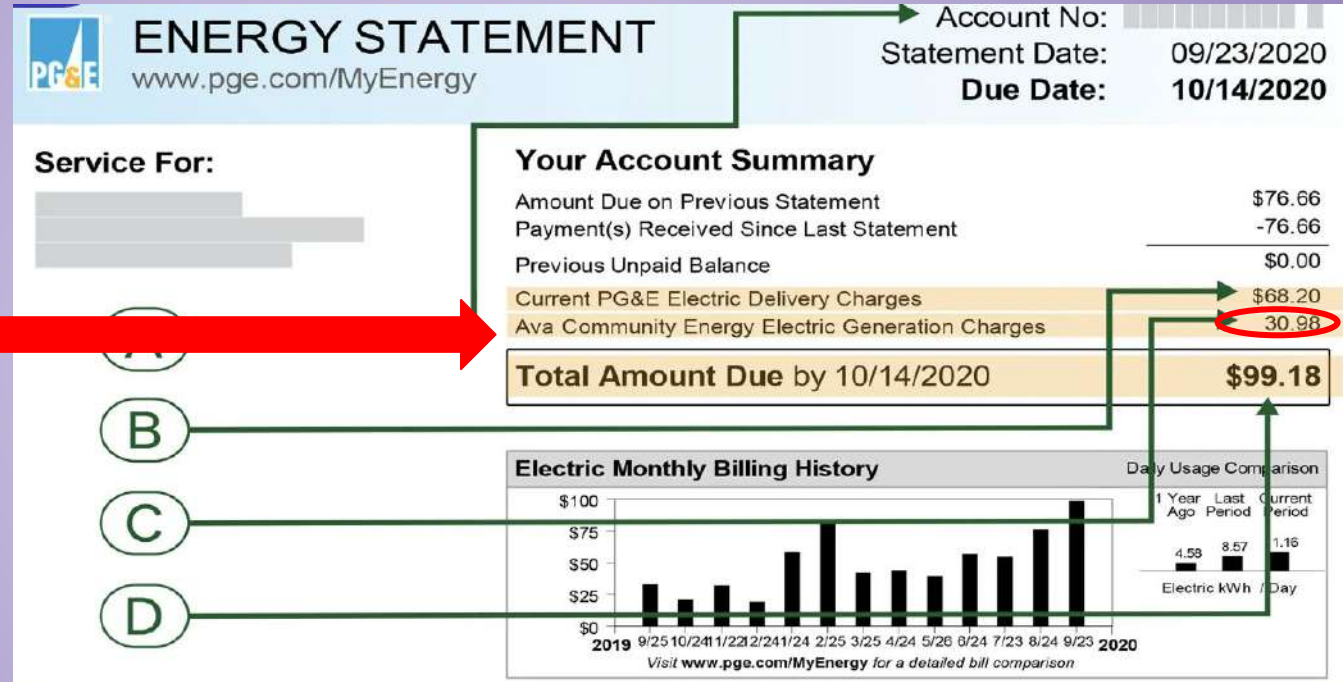
**Environmental Justice
Communities**

**Alameda and San Joaquin
Counties**

**Cities and Unincorporated
Areas**



Money Towards Electricity Stays in the Community



**SAN JOAQUIN VALLEY & ALAMEDA COUNTY COMMUNITIES
PAY AVA COMMUNITY ENERGY FOR ELECTRICITY...**



Local Governance: Who are your representatives?



Rowena Brown
Oakland



Julie Roche
Hayward



Elisa Márquez
Alameda County



Scott Sakakihara
Union City

**How does a public
electricity provider or
energy relate to resilience
or Resiliency Hubs?**



Investor-Owned Utility Mis-management & Infrastructure Collapse

Video adds to scrutiny of Edison tower as possible site of origin of Eaton fire

NEWS | BAY AREA & STATE

PG&E agrees to \$7 million fine for Calif. fire as prosecutors weigh charges

Californians pay billions for power companies' wildfire prevention efforts. Are they cost-effective?

PG&E Says It May Have Started Yet Another Major Northern California Wildfire in June

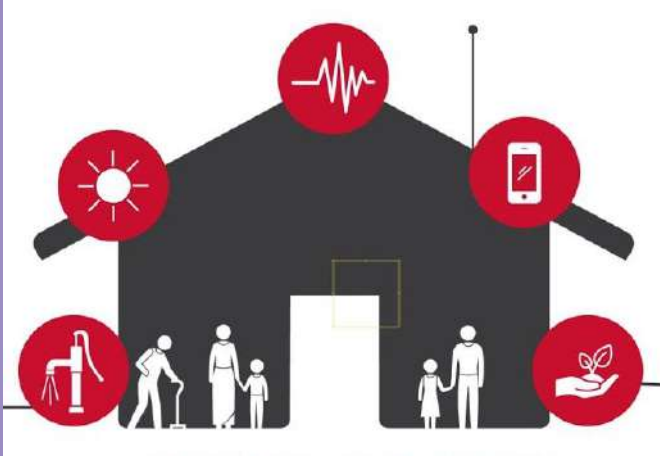
Environmental Injustice & Climate Change is A Crisis

Ayla

Climate Change refers to the extreme changes in temperature and weather events. These changes have caused crises like floods from storms, or wildfires due to lack of rain, plus many other impacts in different parts of the world.



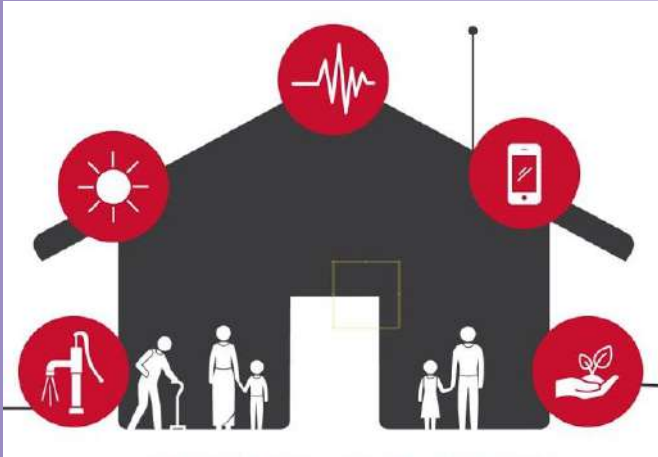
What Are Resilience Hubs?



A physical community center where people gather for day-to-day resources, programs & engagement.

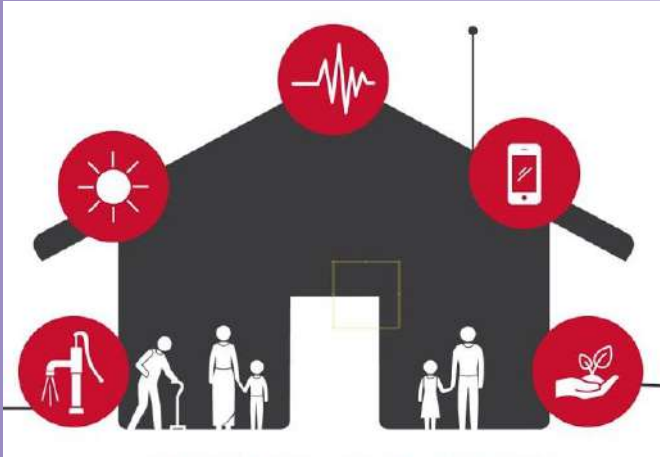
It also can provide resources during disruption such as risk mitigation, and disaster responses before, during and after a crises.

What Are the Core Components of a Resilience Hub?



- Programs & Services
- Information & Connectivity
- Built & Natural Spaces
- Power Systems & Back-up
- Operations & Maintenance
- Accessibility & Transportation

Three Conditions Hubs Support In



- Community Belonging
- Community Cohesion
- Community Collective Care

Community Resilience

The capacity a community has to prepare, respond, and recover from social, environmental and economic impacts.

In our work we emphasize the impacts from emergencies and disasters related to climate crisis & the legacy of dirty energy operations impacts on low-income & communities of color.



Resources Offered or Potentially Offered



Energy & Non-Energy Resources Needed



Energy Benefits - Potential Community Choice Investments

E-bikes and E-scooters

Clean Powered Refrigeration, Cooling/Heating & Air Filtration

Solar and/or Battery Charging + Off-Grid Power - Portable or Infrastructure

Non-Energy Benefits - Potential Unrestricted Funding

Language Appropriate Resources

Community Development

Immigration + Legal Services

Employment + Job Opportunities

Various physical + creative activities

And many more!



**Resilience Hubs, Multi-Affordable Family
Housing & others need access to a
local source of clean & reliable energy!
Microgrid - islandable solar and battery storage.**



**So what did Ava - this
public agency do?**



Where does Ava Community Energy invest in microgrids to be located?

Fire Stations



Police Stations

George Floyd Murdered by Police May 2020



George Floyd, a Black man, died after a white Minneapolis police officer, Derek Chauvin, knelt on his neck for over nine minutes and died.

“I can’t breathe!”

Where Do We - Communities Want Microgrids to be Located:



Childcare Center



Place of Worship



Unhoused Shelter



Park/Recreation Site



Public Library



Food Bank

New Leadership 2024



Where does Local Clean Energy Alliance want microgrids + other clean energy investments to be located?

★ 32 Organizations in Alameda & San Joaquin Valley County cities signed on!

★ Funds Allocated:

- \$2M Technical Assistance
- \$300,000 Grant for CBO
- Solar + Storage w/ Incentive

Expand their definition of a Resilience Hub
Offer smaller resilience grants CBO's for readiness
Need resources to build & formalize a network
Alameda County + San Joaquin County Community Based Organizations to win this campaign.



Ava Resilience Hub Initiative



Emerald Cities Collaborative (ECC) pursues a high-road approach to greening our cities, building resilient regional economies and strengthening our democracy. By building cross-sector collaborations, acutely focused on those historically left out of the economic and community development process, we help communities unleash their capacity to build high-road economies that are more sustainable, economically just and democratic.



LOCAL
CLEAN
ENERGY
ALLIANCE

Local Clean Energy Alliance (LCEA) is the Bay Area's foremost membership organization working at the local, state, and national level to promote a clean energy future through the development and democratization of local renewable energy resources. We see these resources as key to addressing climate change, advancing social and racial justice, and building sustainable and resilient communities.

Community Engagement Grant



PRESENTED BY:



PROGRAM OFFERING OF:



Photo by Brooke Anderson | @movementphotographer

Timeline

Community Definition Workshops (Spring 2025)

Purpose: Collect feedback on the definition of Resilience Hubs and identify what Resilience Hubs provide.

We want to understand what Resilience Hubs need as part of an incentive program.

Resilience Readiness Screening Tool (Summer 2025)

Purpose: Allow hubs to verify if they are eligible for technical assistance and for the Ava Solar + Storage incentive.

Hubs should contact Carli Yoro with Emerald Cities Collaborative to use the tool.

Solar + Storage Incentive Program (Winter 2025)

Purpose: Build out a community-driven incentive program.

Hubs will be able to apply for the solar and storage incentive program as early as fall/winter of 2025.

Community Engagement (Fall '25 - Spring '26)

All hubs interested in learning more about the program can attend our community engagement webinars where we walk you through the program requirements and financial and technical benefits.



"Community Resilience Centers are part of developing collective responses to disasters – responses that benefit entire neighborhoods and communities, not just individual households." — **Shina Robinson, Asian Pacific Environmental Network**



"We envision a future, where every black church is a clean energy hub for their community. We already go to the church for food, for shelter and for community. I ask: 'Why not go to the church for energy?'" — **Dr. Rev. Ambrose Carroll, Green the Church**

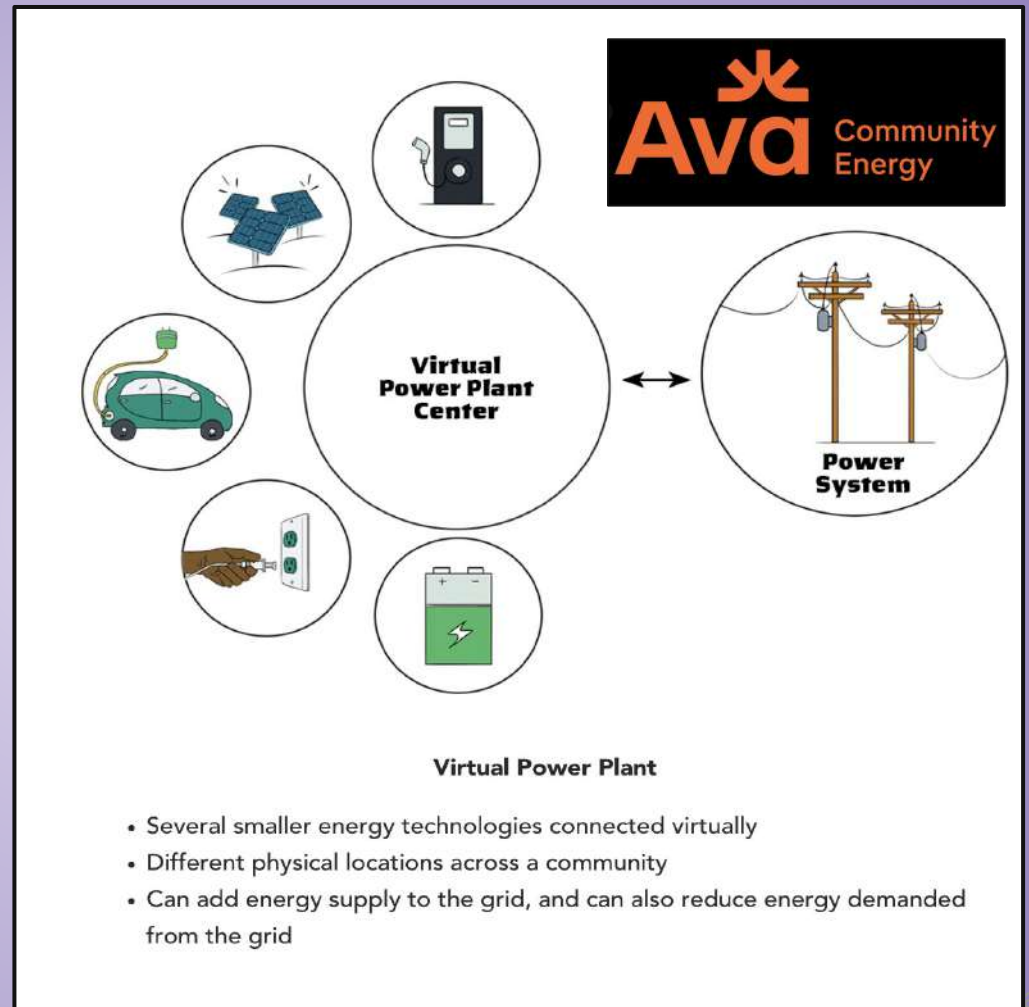
Our campaign looks to promote ***community-driven solutions*** for environmental, energy and climate justice in Ava Community Energy territory. We advocate for funding and resources ***so these solutions are most effective.***





Ava Community Energy board
unanimously votes to create a
virtual power plant program;

Smart Home Batteries & Resilience Hub program



Will You Join Us in Advocating for Local Clean Energy & Resilience Hub Resources?



This campaign & collaboration allowed us to host listening sessions together with grassroots organizations



Local Clean Energy Alliance

Jessica Guadalupe Tovar
jessica@localcleanenergy.org
415-766-7766





LITTLE MANILA RISING



Little Manila & The Crosstown Freeway



Little Manila before the completion of CA HWY4



Dawn's and Dillon's First Organizing
Efforts to Save Little Manila

Little Manila Rising

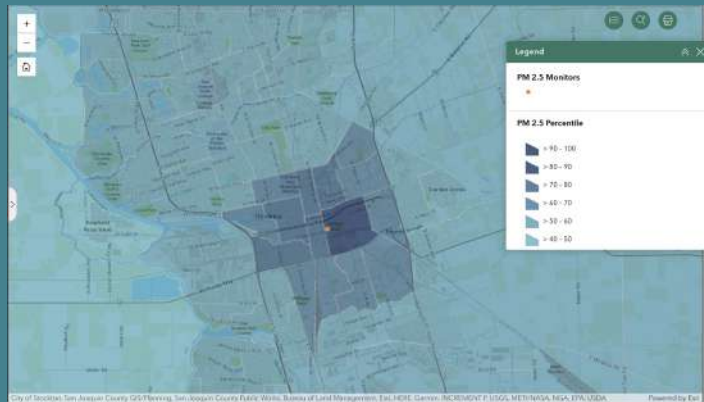


Dawn's Altar at the Center



LMR's Programs

The Process and Partnerships



Strategic Growth Council - Transformative Climate Communities (TCC) with our DAWN, YP, and UF program

CalEnviroScreen workshop with Greenlining Institute in 2016

CLEAN AIR ROOMS PROGRAM
Provides free air filtration units to residents



DRIVE CLEAN IN THE SAN JOAQUIN: REPLACEMENT
Provides the replacement of older gas vehicles with new electric vehicles



CLEAN GREEN YARD MACHINES: RESIDENTIAL
Replaces gas-fueled lawn equipment with electric powered equipment



FIREPLACE & WOODSTOVE CHANGE-OUT
Replaces open hearth fireplaces with cleaner gas burning fireplaces



AB 617 enacted by California Air Resources Board (CARB) to establish the Community Air Protection Program to reduce air pollution exposure in communities that are disproportionately affected by it



The Process and Partnerships

Already begun to activate further spaces the Grant St (a network of other Green Workforce partners - Rising Sun, Grid Alternatives, Insight Garden Program)



Becoming a COVID community nonprofit focus



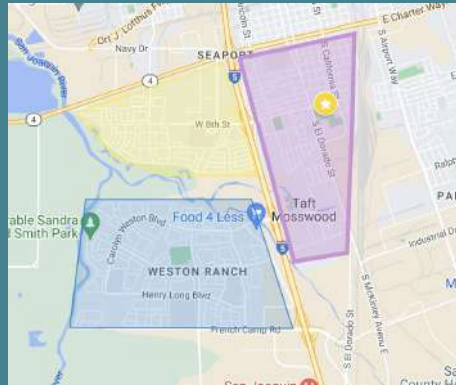
Technical assistance:

- Community Vision
- Equity Community Builders
- CA CLT Network
- National Renewable Energy Lab.

The Process and Partnerships

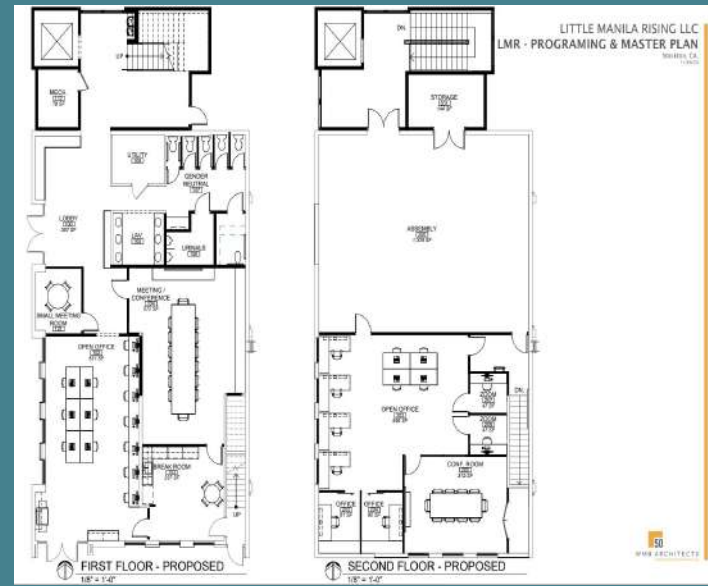


Being the second New Market Tax Credit Investment in Stockton



Strategic Growth Council - Community Resiliency Center (CRC)

Climate Community Hub



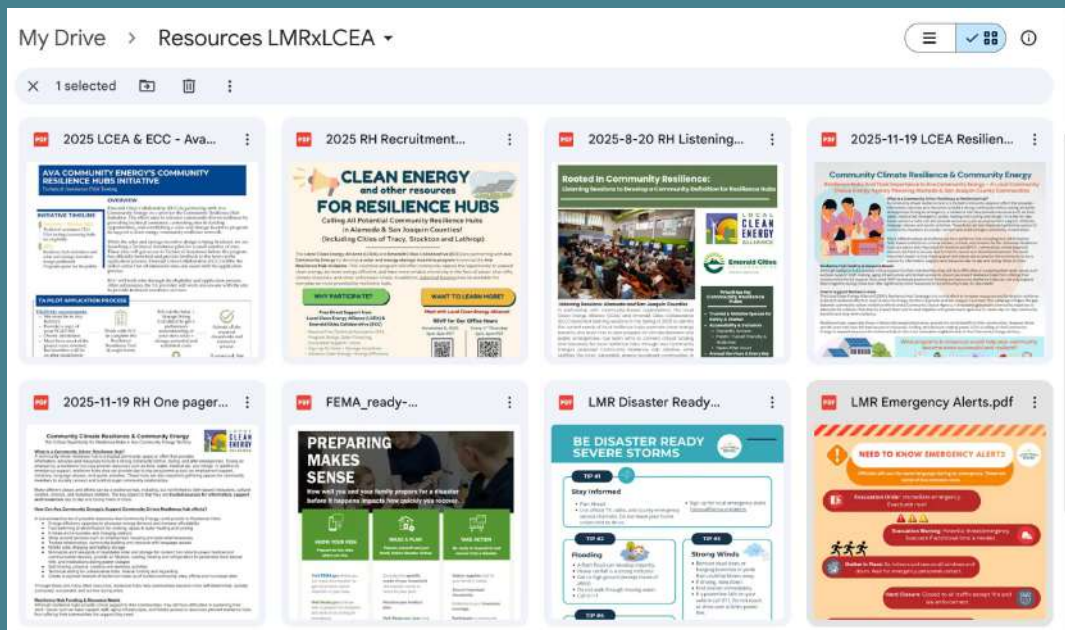
Lessons Learned

- We still have a long way to go and none of this can be rushed
- We're an organization that grew so fast and will continue to grow for as long as our South Stockton residents have dreams to pursue
- Difficulty in putting together financial documents e.g. Pro-Forma, 7 year budget projections
- Navigating different restrictions per grant sources (public funds, prevailing wage, timeline delays)
- None of this was easy, but we know it is all worth it at the end so we can create that path of community ownership and climate resiliency with our people

Resources



<https://tinyurl.com/LMRxLCEAresources>



Thank you!



Raziel Ramil
raziel@littlemanila.org



Jessica Guadalupe Tovar
jessica@localcleanenergy.org