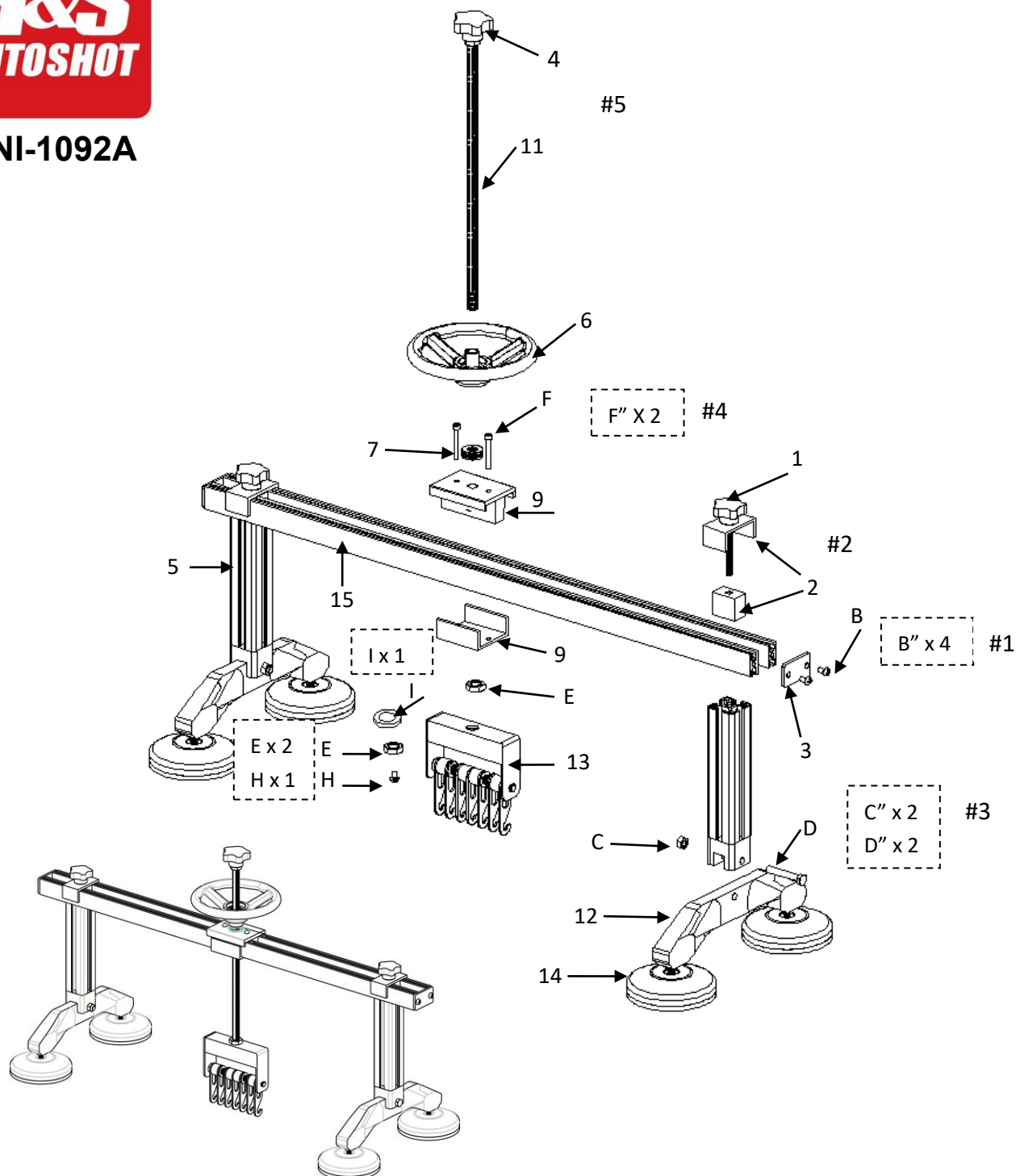




UNI-1092A

## ASSEMBLY INSTRUCTIONS



Assembly instruction:

#1 Install cover to cross bridge with M6x20 screw (B,3'. 15')

#2 Install slider and spacer to cross bridge with M8 torx screw (1, 2, 5)

#3 Install pad to support pillar with M8x50 screw and M8 nut (C, D, 5, 12)

#4 Install slider 6 and 7 to cross bridge with M5x40 screw (F, 9, 15)

#5 Install M12 screw bar "11" through to hand wheel"6" and bearing "7"

And then install M12 screw bar, through to M12 nut "E", through claw "13" w/ M12 washer "I", M12 nut "E", and M6 screw "H" lock them at the end.

Part list:

No.	Code	Description	Qty	No.	Code	Description	Qty
1	UNI-1092-01A	Knob M8	2	7	UNI-1092-07	Bearing	1
2	UNI-1092-02A	Support Block	2	9	UNI-1092-09	Slide Block	1
3	UNI-1092-03A	Cover Plate	2	11	UNI-1092-11A	Pull Shaft "D"	1
4	UNI-1092-04	Knob M12	1	12	UNI-1092-12A	Foot Support	2
5	UNI-1092-05A	Leg Pillar Sup	2	13	UNI-1092-13	Claw Assem.	1
6	UNI-1092-06	Hand Wheel	1	14	UNI-1092-14	Round Foot	4
				15	UNI-1092-15A	Slide Rail	2

Hardware list:

No.	Code	Description	Qty	Picture
B		M6x12 screw-with washer	4	
C		M8 nylon nut	2	
D		M8x50 hex screw	2	
E		M12 nylon lock nut	2	
F		M5 x 40 hex screw	2	
H		M6x12 screw	1	
I		M12 washer	1	