



# **Pull-PROx™**

## **Portable Dent Pulling Tower**

- Quickly setup and pull aluminum or steel dents with over 1,300 pounds of pulling force
- Adjustable height allows for precision pulls
- Vacuum seal allows for ultimate portability and wheels on tower for quick storage
- Optional accessories:
  - Low pull base kit (UNI-1097)
  - High pull extension kit (UNI-1098)

**NEW X-Plate is standard on all towers & plate kits!**

- **MOLDED RUBBER**

Molded neoprene rubber base offers medium-soft durometer one-piece design for maximum seal contact and increased wear resistance as compared to neoprene foam seal.

- **REINFORCING RIBBING**

Internal contact ribbing bars have been added to increase lateral holding power required in more horizontal pulls at less than 40-degrees.

- **VULCANIZED CONSTRUCTION**

The neoprene rubber is vulcanized directly to the X-plate creating a superior bond and making any separation virtually impossible.



UNI-1096



WATCH VIDEO

**HSAUTOSHOT.COM • (980) 500-1015**



FOLLOW US @HSAUTOSHOT



# **Pull-PROx™**

## **Portable Dent Pulling Tower**



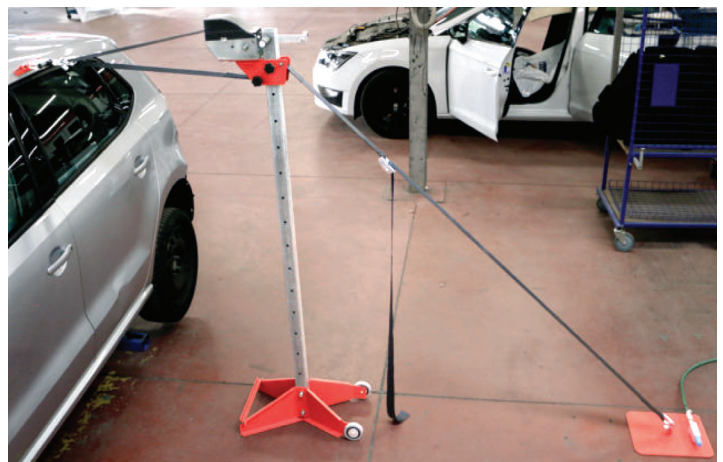
**Tower UNI-1096 Pkg. / Door Panel Pull**



**Tower with UNI-1097 / Rocker Panel Pull**



**UNI-1097 Plate Kit / Vehicle Holding**



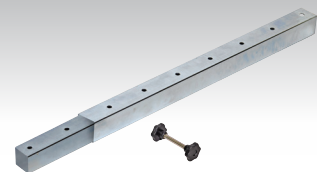
**Tower with UNI-1098 / Roof Pillar Pull**



**UNI-1096, UNI-1097 & UNI-1098**



**UNI-1097 Second Plate Kit**  
for horizontal holds (keeps  
vehicle fixed) or downward  
pulls (rocker panels)



**UNI-1098 Extension Pole Kit**  
adds 36" to height for pulls  
on pillars, truck cabs  
or lifted vehicles

