



GPR-Pro™

Glue Pull Advanced PDR System

QUICK SPECS

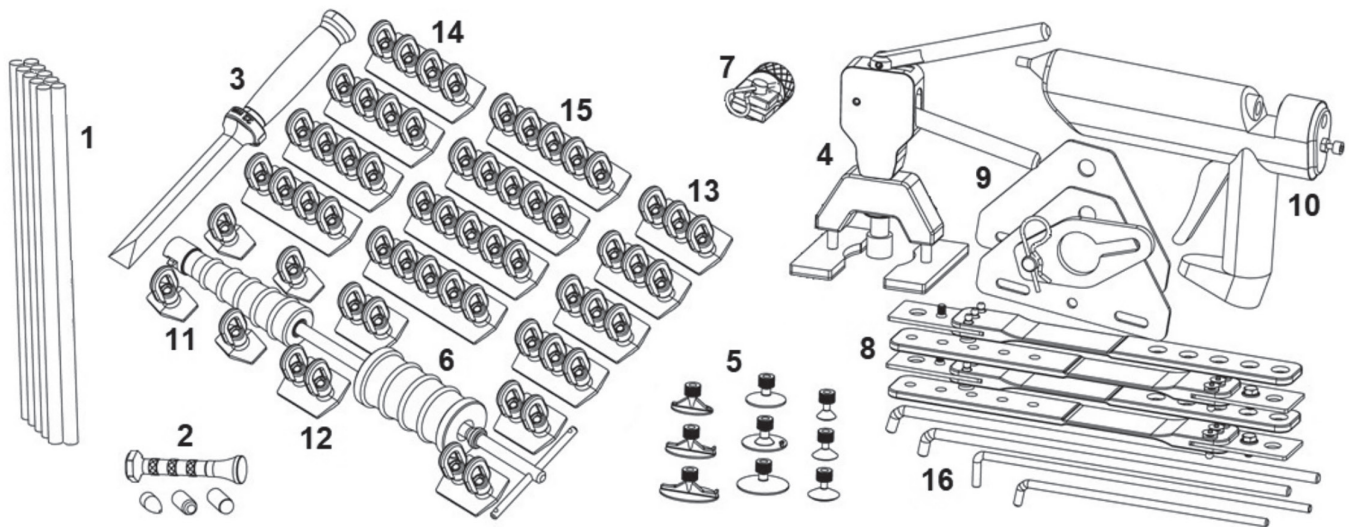
- Save Time PDR Pulls
- Aluminum or Steel
- Large or Small Areas
- Up & Lateral Pulls



GPR-7571

- **Modular HD Tabs:** Includes 20 heavy-duty 1-1/2" wide multi-tabs from 1"-5" with adjustable height pull rings for highly accurate and pulls on the largest of panels.
- **Assorted Knob Tabs:** Includes 7 assorted oval & round pull knobs with convex or flat faces from 1/2"-2" for precision squeeze or hammer pulls on small dents & dings.
- **Lateral Pull Strips:** Flexible straps for lateral pulls on up to three 5" tabs via ram or chain with ring holes to pull out the damaged panel at the same angle as it occurred.
- **Pulling Rod Set:** Four common lengths (4", 10", 14" & 18") heavy-duty, zinc plated tool steel rods designed for 3-9 finger pulling claws distribute the load evenly on panel.
- **Knob Tab Pullers:** Kit contains light weight but strong anodized die cast aluminum squeeze puller and compact slide hammer for controlled knob pulls on small dents.
- **Knock Down Tool:** Light-weight but strong anodized aluminum body knock down tool with four non-marking profiled tips to remove high spots and stress lines on panels.
- **Powerful Gun:** The 300-watt glue gun provides high temperature glue flows over large surface area modular tabs to ensure maximum adhesion to the damaged panel.
- **Heavy-Duty Pro-Glue:** Only our premium opaque glue with high flow rates, superior pull strength and easy release in all conditions is included with the kit. Ten sticks at ~1/2 lb.

SPECIFICATIONS



- 1) GPR-7539** Glue Opaque-Pro Premium (10-Pack)
- 2) GPR-7542** Multi-Tip Knock Down Tool (4-Tips)
- 3) GPR-7543** Scraper Tool Polycarb Chisel Tip (7/8")
- 4) GPR-7572** Mini-Squeeze Knob Lifter Tool
- 5) GPR-7573** Pull Knob Assort. Convex & Flat (7-Pc)
- 6) GPR-7574** Slide Hammer Aluminum - Pull Knob
- 7) GPR-7576** Lateral Pulling Head - Ram (3/4" PTH)
- 8) GPR-7577** Lateral Pull Strips 5-Ring x 13" (4-Pc)

- 9) GPR-7578** Lateral Pull Strip Plates (2-Pc)
- 10) GPR-7580** Pro Premium Glue Gun (300-Watt)
- 11) GPR-7581** Module Tab 1" x 1-1/2" Single (4-Pc)
- 12) GPR-7582** Module Tab 2" x 1-1/2" Double (4-Pc)
- 13) GPR-7583** Module Tab 3" x 1-1/2" Triple (4-Pc)
- 14) GPR-7584** Module Tab 4" x 1-1/2" Quad (4-Pc)
- 15) GPR-7585** Module Tab 5" x 1-1/2" Quint (4-Pc)
- 16) UNI-1065** Ring Pulling Rod Set (4", 10", 14", 18")

ACCESSORIES

UNI-1096
Pull-PROx
Portable Dent
Pulling Tower
Height 65"



UNI-1097
Second
Plate Kit



UNI-1098
Extension Pole Kit
Height 36"



*UNI-1096
with UNI-1097
& UNI-1098*



UNI-7804
PDR blending hammer with ultra
light-weight 19" carbon fiber handle



UNI-1091
Bridge Puller
16" Single Arm
3-Claw Head



UNI-1092
Bridge Puller
34" Single Arm
6-Claw Head



UNI-1093
Bridge Puller 47"
Single Arm, 6-Claw Head

