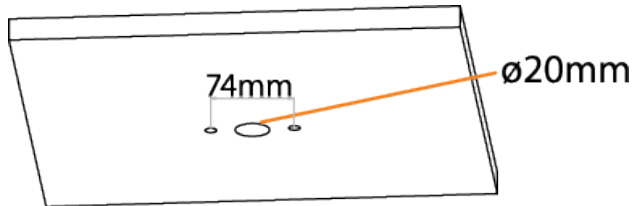


SUSPENDED MOUNTING CLIP + ROD

Hidden Wires: Installation

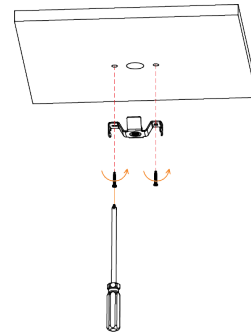
STEP 1:

Mark the installation position of clevis on the ceiling with sufficient load-carrying capacity, and in between punch a $\varnothing 20\text{mm}$ cable hole.



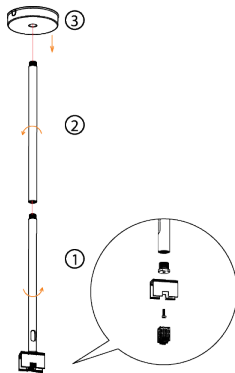
STEP 2:

Tighten the clevis by screws.



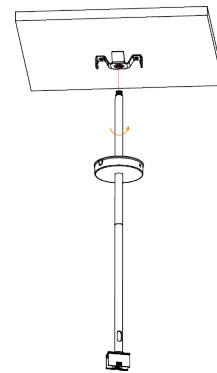
STEP 3:

Assemble the mounting flange and the rods in the order of 1, 2 and 3.



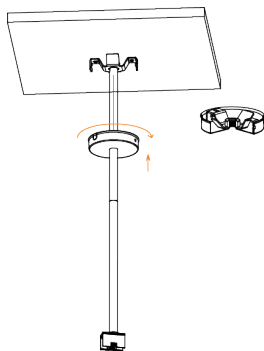
STEP 4:

Rotate and fasten them clockwise.



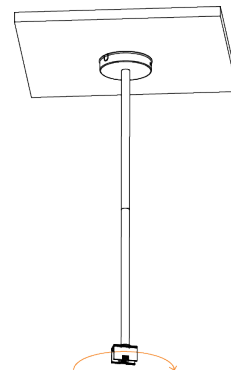
STEP 5:

Shield the clevis by the mounting flange and rotate anticlockwise until it clicks into place.



STEP 6:

Adjust the clip to the angle you need (max. 180° in a clockwise direction).

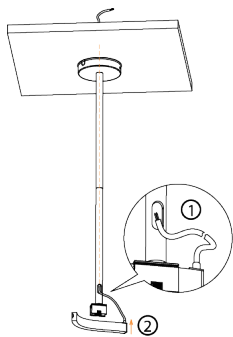


SUSPENDED MOUNTING CLIP + ROD

Hidden Wires: Installation Continued

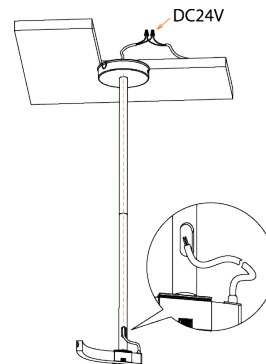
STEP 7:

Thread the cable through holes to the inside of the ceiling. Then install the light to the clip and adjust the cable length.



STEP 8:

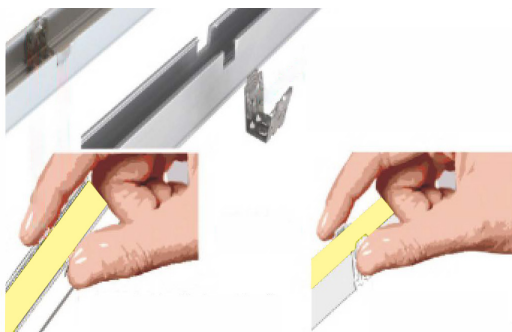
Connect the Power DC24V



UNINSTALLATION OF FIXTURE

METHOD 1:

Pinch both sides of the clip, pull it up, and take out the light slowly. Make sure the angle between the light and the profile is not bigger than 15°.



METHOD 2:

Use tool like nipper to pinch both sides of clip, and take out the light slowly. Make sure the angle between the light and the profile is not bigger than 15°.

