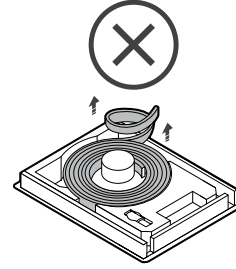
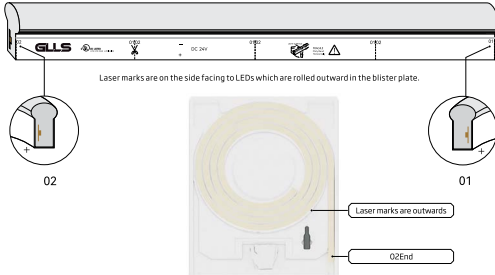
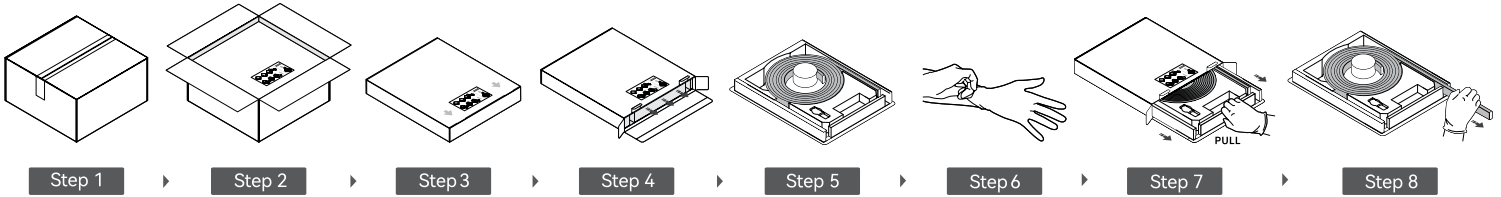


STANDARDS

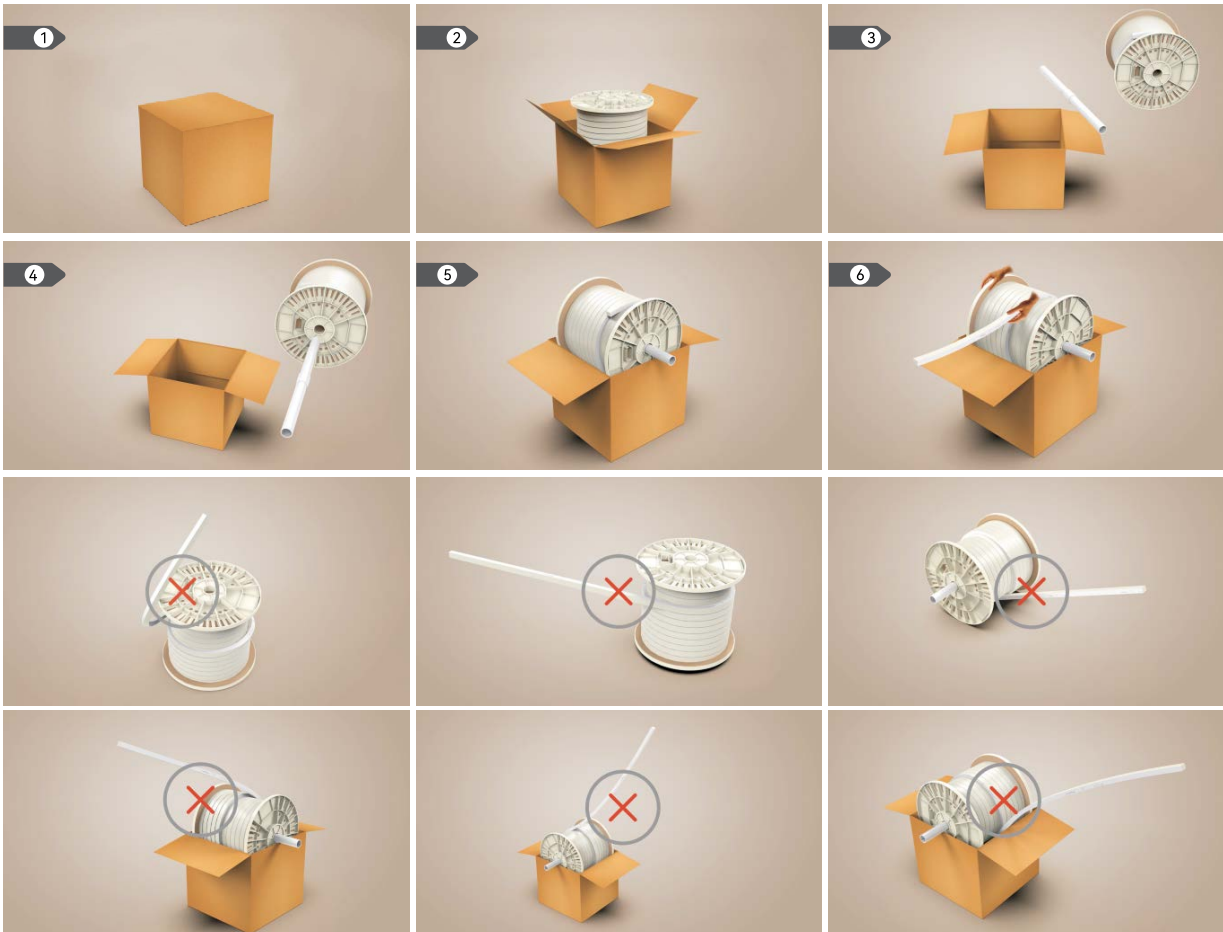


NOTICE

UNPACKING - FLAT PACK



UNPACKING - REEL



Packaging

FLAT PACK



| CABLE ENTRY | LIGHT FIXTURE LENGTH/BOX | WHITE BOX QTY/ PACKAGE | PACKAGE DIMENSIONS |
|------------------|--------------------------|---------------------------|----------------------------------|
| END FEED | 16.4ft (5m) | 1 | 28.8*24.5*2.5in(73.2*62.2*6.3cm) |
| | 16.4ft (5m) | 2 | 28.5*24*4.7in(72.5*61*12cm) |
| | 16.4ft (5m) | 5 | 28.5*24*10.7in(72.5*61*27cm) |
| | 32.81ft (10m) | 1 | 31.9*27.6*2.5in(81.2*70.2*6.3cm) |
| | 32.81ft (10m) | 2 | 31.7*27.2*4.9in(80.5*69*12.5cm) |
| SIDE/BOTTOM FEED | 16.4ft (5m) | 1 | 28.8*24.5*3.1in(73.2*62.2*7.9cm) |
| | 16.4ft (5m) | 2 | 28.5*24*5.7in (72.5*61*14.5cm) |
| | 16.4ft (5m) | 5 | 28.5*24*12.8inin(72.5*61*32.5cm) |
| | 32.81ft (10m) | 1 | 31.9*27.6*2.9in(81.2*70.2*7.3cm) |
| | 32.81ft (10m) | 2 | 31.7*27.2*5.7in(80.5*69*14.5cm) |

Note: Min. Volume of package will be based on the actual order. Packing details are subject to change, please refer to the final packing list of each order.

MOUNTING PROFILES

| TYPE | PROFILE LENGTH | CARTON DIMENSION | QTY (PCS) | WEIGHT OF PACKAGE |
|-------------------------------------|------------------|---------------------------------|-----------|-------------------|
| ALUMINUM - SILICONE GRIP | 19.68in (500mm) | 23.2*10.2*11.2in (59*26*28.5cm) | 80 | 37.5lbs (17kg) |
| | 39.37in (1000mm) | 42.5*10.2*6.3in (108*26*16cm) | 48 | 41.9lbs (19kg) |
| | 78.74in (2000mm) | 82.7*5.7*6.3in (210*14.5*16cm) | 24 | 45.2lbs (20.5kg) |
| ALUMINUM - RECESSED - SILICONE GRIP | 19.68in (500mm) | 23.2*10.2*11.2in (59*26*28.5cm) | 80 | 37.5lbs (17kg) |
| | 39.37in (1000mm) | 42.5*10.2*6.3in (108*26*16cm) | 48 | 41.9lbs (19kg) |
| | 78.74in (2000mm) | 82.7*5.7*6.3in (210*14.5*16cm) | 24 | 45.2lbs (20.5kg) |

MOUNTING PROFILES

| Type | profile length | carton dimension | Qty (pcs) | Weight of package |
|-------------------------------------|------------------|-------------------------------------|-----------|-------------------|
| Aluminum - basic | 1.38in (35mm) | 11.4*8.7*5.7in (29.0*22.0*14.5cm) | 700 | 12.1lbs (5.50kg) |
| | 19.68in (500mm) | 21.7*4.7*4.7in (55.0*12.0*12.0cm) | 25 | 8.8lbs (4.00kg) |
| | 39.37in (1000mm) | 40.9*10.4*5.2in (104.0*26.5*13.2cm) | 72 | 34.2lbs (15.50kg) |
| | 78.74in (2000mm) | 81.1*7.5*4.7in (206.0*19.0*12.0cm) | 48 | 45.2lbs (20.50kg) |
| Aluminum - Recessed | 1.38in (35mm) | 11.4* 8.7*5.7in (29.0*22.0*14.5cm) | 420 | 10.8lbs (4.90kg) |
| | 19.68in (500mm) | 21.7*4.7*4.7in (55.0*12.0*12.0cm) | 16 | 7.7lbs (3.50kg) |
| | 39.37in (1000mm) | 40.9*10.4*5.2in (104.0*26.5*13.2cm) | 45 | 30.4lbs (13.80kg) |
| | 78.74in (2000mm) | 81.1*7.5*4.7in (206.0*19.0*12.0cm) | 30 | 40.3lbs (18.30kg) |
| Aluminum - Silicone Grip | 0.79in (20mm) | 11.4* 8.7*5.7in (29.0*22.0*14.5cm) | 975 | 11lbs (5.00kg) |
| | 19.68in (500mm) | 21.7*4.7*4.7in (55.0*12.0*12.0cm) | 20 | 9.5lbs (4.30kg) |
| | 39.37in (1000mm) | 40.9*10.4*5.2in (104.0*26.5*13.2cm) | 60 | 33.1lbs (15.00kg) |
| | 78.74in (2000mm) | 81.1*7.5*4.7in (206.0*19.0*12.0cm) | 32 | 36.4lbs (16.50kg) |
| Aluminum - Recessed - Silicone Grip | 0.79in (20mm) | | | |
| | 19.68in (500mm) | 11.4* 8.7*5.7in (29.0*22.0*14.5cm) | 780 | 9.5lbs (4.30kg) |
| | 39.37in (1000mm) | 21.7*4.7*4.7in (55.0*12.0*12.0cm) | 12 | 3.9lbs (1.80kg) |
| | 78.74in (2000mm) | 40.9*10.4*5.2in (104.0*26.5*13.2cm) | 40 | 23.1lbs (10.50kg) |
| Aluminum Flexible | 19.68in (500mm) | 81.1*7.5*4.7in (206.0*19.0*12.0cm) | 24 | 27.6lbs (12.50kg) |
| | 39.37in (1000mm) | 21.7*4.7*4.7in (55.0*12.0*12.0cm) | 20 | 4.9lbs (2.20kg) |
| Plastic | 1.38in (35mm) | 11.4*8.7*5.7in (29.0*22.0*14.5cm) | / | / |
| | 19.68in (500mm) | 21.7*4.7*4.7in (55.0*12.0*12.0cm) | 20 | 6.2lbs (2.80kg) |
| | 39.37in (1000mm) | 40.9*10.4*5.2in (104.0*26.5*13.2cm) | 60 | 20.5lbs (9.30kg) |
| | 78.74in (2000mm) | 81.1*7.5*4.7in (206.0*19.0*12.0cm) | 40 | 26.9lbs (12.2kg) |