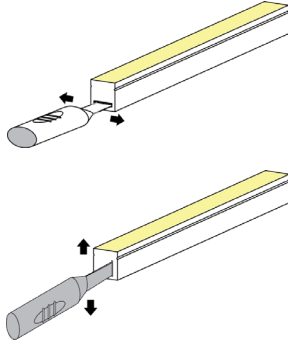


DIY SWIVEL CONNECTOR

Installation: End Exit

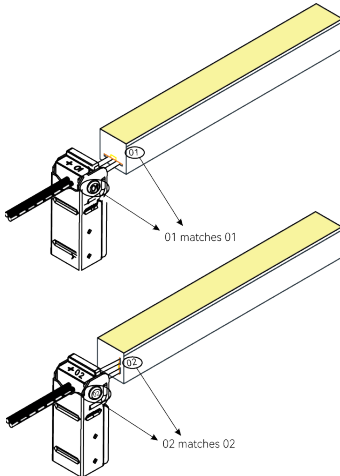
STEP 1:

For Top-bending fixtures, insert the inducer into the back of PCB and move gently to create a small cavity. For side bend fixtures, insert the inducer into the back of PCB and gently move vertically to create a small cavity.



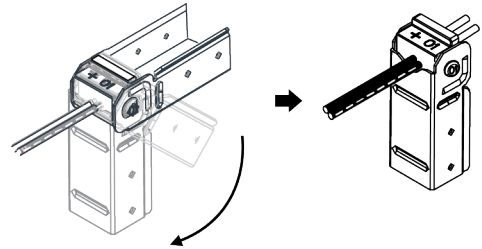
STEP 3:

For both top and side bending fixtures, insert the pins of the feed connector into the space created by the inducer at the back of the PCB and push them to the end.



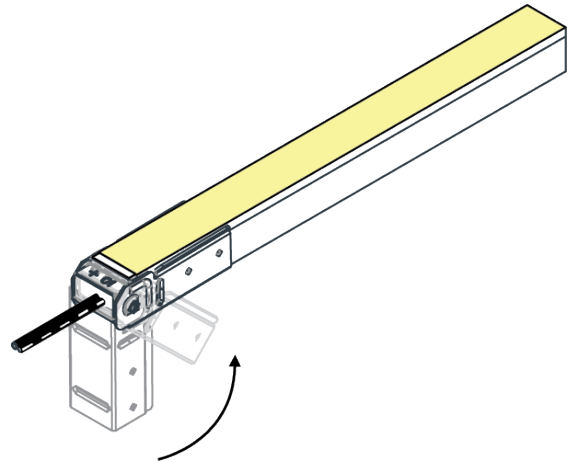
STEP 2:

Rotate the U-shaped steel plate downwards to fully expose the pins of the feed connector.



STEP 4:

Rotate back till the light seats into the steel plate tightly.

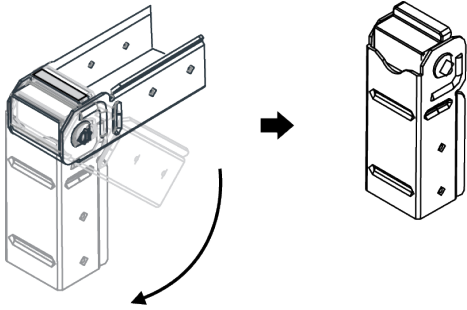


DIY SWIVEL CONNECTOR

Installation: End Cap

STEP 1:

Rotate the U steel plate downwards.



STEP 2:

Align the fixture end with the end cap and rotate the steel plate back until the light is securely seated.

